

CATALOGO PARTI DI RICAMBIO
SPARE PARTS LIST
CATALOGUE DES PIECES DE
RECHANGE
ERSATZTEILKATALOG
CATALOGO DE REPUESTOS



SERIE F25

FORIGO

roteritalia

ORDINAZIONE PARTI DI RICAMBIO

Specificare chiaramente:

- Modello e matricola della macchina (stampigliati sul telaio)
- Numero catalogo, numero di tavola, numero di riferimento, numero di codice, denominazione del particolare
- Quantità dei pezzi desiderati
- Mezzo di spedizione (se non specificato la ditta roteritalia si riserva di usare a sua discrezione il mezzo più opportuno) .

WHEN ORDERING SPARES

Clearly specify:

- The model and serial number of the machine (indicated on the machine frame)
- Catalog number, table number, reference number, code number, description of the item in question
- Number of spares required
- Dispatch means (if not specified, roteritalia reserves the right to use the most opportune means).

COMMANDE DE PIECES DE RECHANGE

Indiquer clairement:

- Modèle et matricule de la machine (Indiqués sur la machine)
- Numéro du catalogue, numéro du tableau, numéro de référence, numéro de code et dénomination de la pièce
- Quantité de pièces voulues
- Moyen d'expédition (s'il n'est pas spécifié, la maison roteritalia se réserve d'utiliser le moyen le plus opportun) ..

BESTELLEN VON ERSATZTEILEN

Klar und eindeutig angeben:

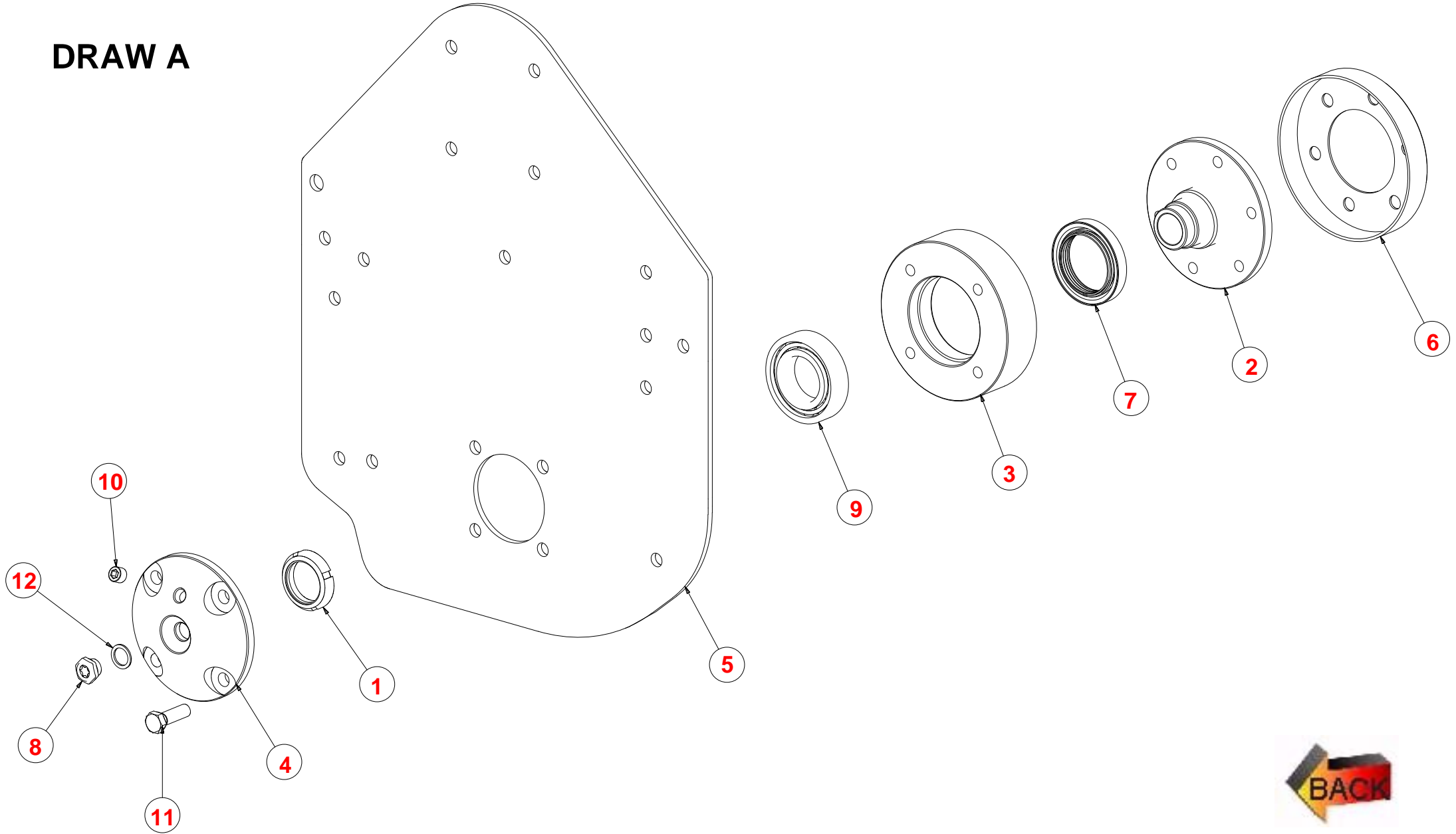
- Modell und Serien-Nr. der Maschine (der Maschine angeben)
- Katalog-Nr., Tafel-Nr., Sach-Nr., Schlüssel-Nr., Benennung des Einzelteils
- Anzahl der gewünschten Ersatzteile
- Versandmittel (Wenn keine Versandanweisung angegeben wird, behält sich Fa. roteritalia vor, das geeignetste Versandmittel nach eigenem Gutdunken auszuwählen).

PEDIDOS PARTES DE RECAMBIOS

Especificar claramente:

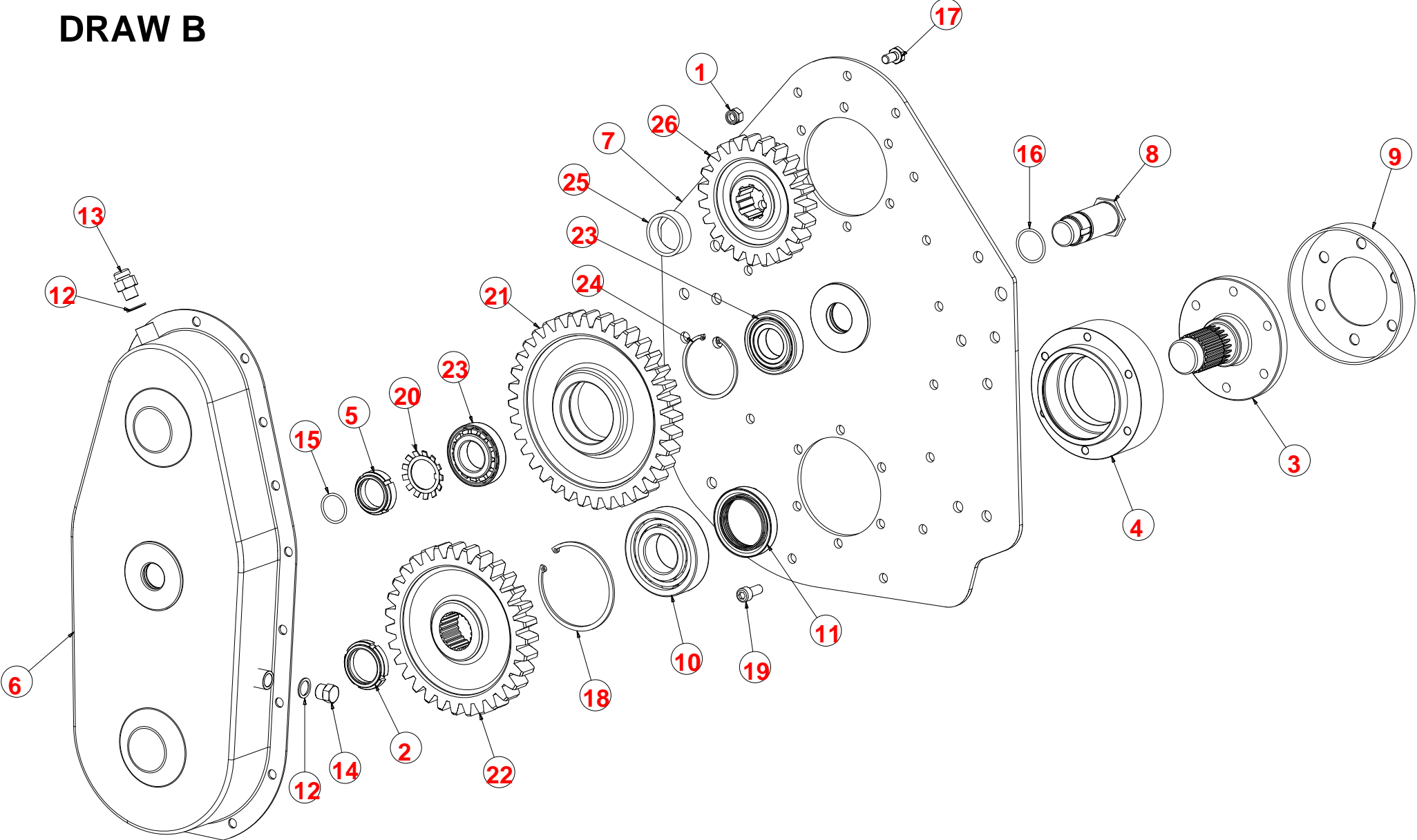
- Modelo y matricula de la maquina (estampillada sobre el chasis)
- Numero catalogo, numero de tabla, numero de referencia, numero de codigo, denominacion del particular
- Cantidad de las piezas deseada
- Medio de envio (sino especificado la empresa roteritalia se reserva de emplear a su discrecion el medio mas oportuno).

DRAW A

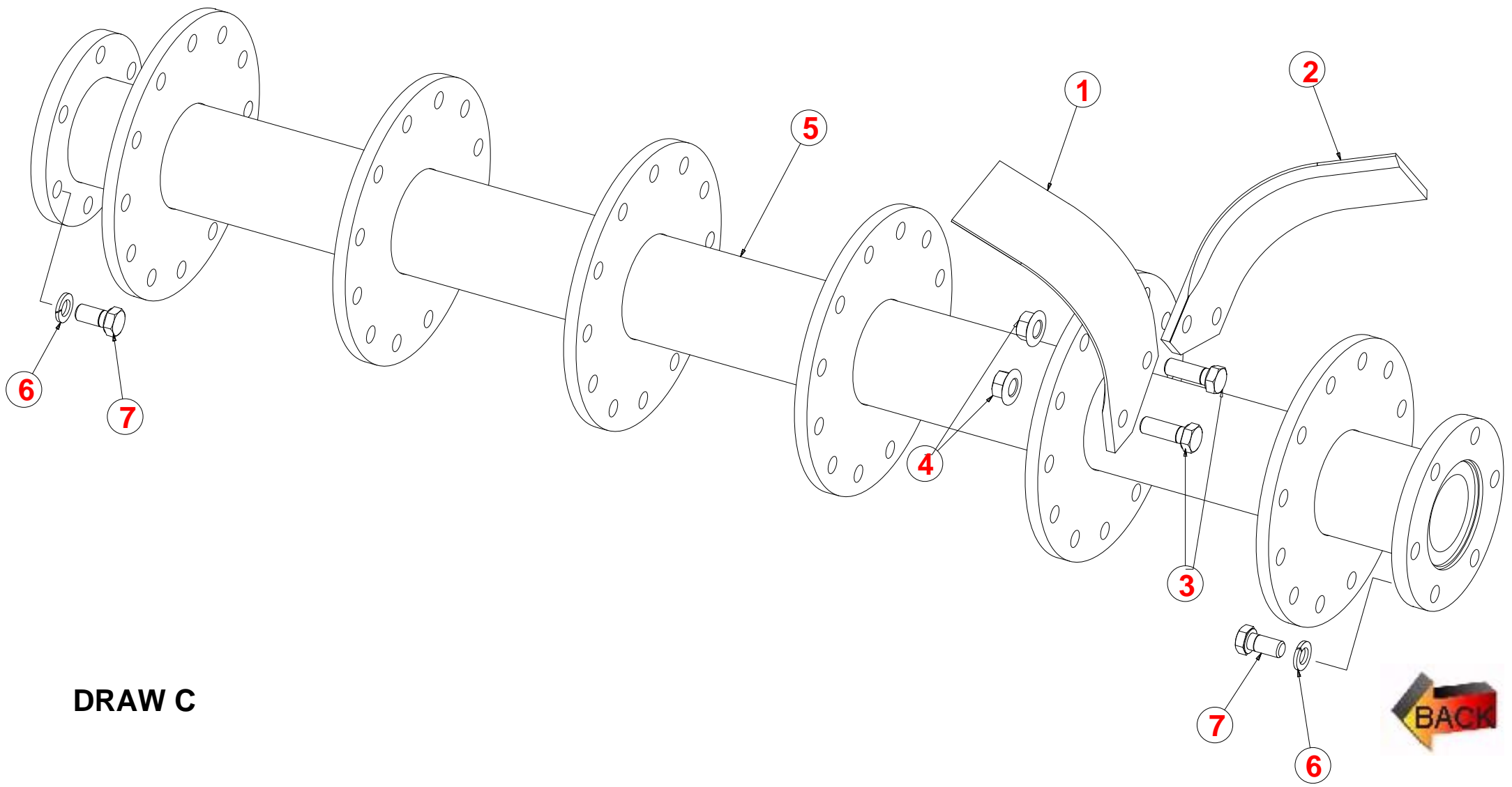


| COD | REF | DESCRIZIONE | DESCRIPTION | DENOMINATION | BENENNUNG | DESCRIPCION |
|---------------|------------|--|-------------------------|------------------------------|--|---------------------------------------|
| DAG01401 | 1 | GHIERA AUTOBL. GUK 40x1,5 | RING NUT GUK 40x1,5 | FRETTE GUK 40x1,5 | NUTMUTTER GUK 40x1,5 | TUERCAS RODONDA INTAGLIATA GUK 40x1,5 |
| F2500.2.006.0 | 2 | -----ALBERO LATO OPPOSTO F25----- | OPPOSITE SIDE SHAFT F25 | ARBRE CÔTÉ OPPOSE F25 | GEGENUEBERLIEGENDE WELLE F25 | ARBOL LADO OPUESTO F25 |
| F250020080 | 3 | -----SOSTITUITO DA F250020081----- | ----- | ----- | ----- | ----- |
| F2500.2.009.0 | 4 | -----COPPA LATO OPPOSTO F25----- | OPPOSITE SIDE SUMP | DISQUE ESTERIEUR CÔTÉ OPPOSE | GEGENUEBERLIEGENDE GSSEISENFLANSCH | COPA EXTERNA LATO OPUESTO |
| F250010080 | 5 | -----FIANCATA LATO OPPOSTO F25----- | ----- | ----- | ----- | ----- |
| F250030230 | 6 | -----PARAPOLVERE ROTORE F25 SALDATO----- | ----- | ----- | ----- | ----- |
| GUA06631 | 7 | ANELLO CASSETTA 56x80x13/14,5 NBR | OIL SEAL 55x85x10 | PARE-HUILE 55x85x10 | OLABDICHTUNG 55x85x10 | ANILLO 55x85x10 |
| TAP00551 | 8 | TAPPO-INDICATORE DI LIVELLO A VISTA 3/8" GAS | OIL TOP UP CAP | BOUCHON DE REMPLISSAGE HUILE | OLEINFULLSTOPFEN | ENCHUFE TAPA DE NIVEL DE ACEITE |
| CUS02051 | 9 | CUSCINETTO 6209 MARCA ZKL | BEARING 6314 | ROULEMENT 6314 | KUGELLAGER 6314 | COJINETE 6314 |
| TAP01401 | 10 | TAPPO CONICO STEI 14X1.5 DIN 906 | CONIC CAP STEI 14x1,5 | BOUCHON CONIQUE STEI 14x1,5 | DECKEL STEI 14x1,5 | TAPA STEI 14x1,5 |
| VIT03401 | 11 | VITE TE 10.9 M 12x1,25x40 UNI5740 NERA | SCREW 12x40 MB | VIS TE M 12x40x1,25 | SCHRAUBE TE M 12x40x1.25 VERZINKT P.F. | TORNILLO 12x40 MB |
| RON02201 | 12 | RONDELLA IN RAME 3/8" - 17x23x1,5 | WASHER GASKET 3/8" | RONDELLE EN CUIVRE 3/8" | KUPFER UNTERLEGSCHIEBE 3/8" | ARANDELA IN COBRE 3/8" |

DRAW B



| COD | REF | DESCRIZIONE | DESCRIPTION | DENOMINATION | BENENNUNG | DESCRIPCION |
|---------------|-----|---|----------------------------------|--------------------------------------|---------------------------------------|--|
| DAG00101 | 1 | DADO AUTOBL. 982 C.8 10x1,5 MA ZIN. B. | NUT 982 C.8 10x1,5 MA ZIN. B. | ECROU 982 C.8 10x1,5 MA ZIN. B. | MUTTER 982 C.8 10x1,5 MA ZIN. B. | DADO 982 C.8 10x1,5 MA ZIN. B. |
| DAG01401 | 2 | GHIERA AUTOBL. GUK 40x1,5 | RING NUT GUK 40x1,5 | FRETTE GUK 40x1,5 | NUTMUTTER GUK 40x1,5 | TUERCAS RODONDA INTAGLIATA GUK 40x1,5 |
| F250020050 | 3 | -----ALBERO LATO TRASMISSIONE F25----- | ----- | ----- | ----- | ----- |
| F250020070 | 4 | -----SOSTITUITO DA F250020071----- | ----- | ----- | ----- | ----- |
| DAG00901 | 5 | GHIERA AUTOBL. GP-GUP 35x1,5 | RING NUT GP-GUP 35x1,5 | FRETTE GUP GP-GUP 35x1,5 | SELBSTSP. NUTMUTTER GP-GUP 35x1,5 | TUERCAS RODONDA INTAGLIATA GP-GUP 35x1,5 |
| F250030020 | 6 | -----CARTER F25 SALDATO----- | ----- | ----- | ----- | ----- |
| F250030030 | 7 | -----FIANCATA LATO TRASMISSIONE F25 SALDATA----- | ----- | ----- | ----- | ----- |
| F2500.2.010.0 | 8 | -----ALBERO TRASMISSIONE RUOTA CENTRALE----- | TRANSMISSION SHAFT WHEEL CENTRAL | ARBRE TRANSMISSION ROUE CENTRAL | ÜBERMITTLUNG SHAFT WHEEL CENTRAL | ARBOL TRANSMISIÓN CENTRAL RUEDAS |
| F250030230 | 9 | -----PARAPOLVERE ROTORE F25 SALDATO----- | ----- | ----- | ----- | ----- |
| CUS00301 | 10 | CUSCINETTO 6309 MARCA ZKL | BEARING 6309 | ROULEMENT 6309 | KUGELLAGER 6309 | COJINETE 6309 |
| GUA06631 | 11 | ANELLO CASSETTA 56x80x13/14,5 NBR | OIL SEAL 55x85x10 | PARE-HUILE 55x85x10 | OLABDICHTUNG 55x85x10 | ANILLO 55x85x10 |
| RON02201 | 12 | RONDELLA IN RAME 3/8" - 17x23x1,5 | WASHER GASKET 3/8" | RONDELLE EN CUIVRE 3/8" | KUPFER UNTERLEGSCHIEBE 3/8" | ARANDELA IN COBRE 3/8" |
| TAP00501 | 13 | TAPPO DI CARICO CON SFIATO 3/8" GAS | OIL TOP UP CAP | BOUCHON DE REMPLISSAGE HUILE | OLEINFULLSTOPFEN | TAPA DE CARGA DE ACEITE |
| TAP00401 | 14 | TAPPO CON ESAGONO 3/8" GAS CIECO | HEXAGONAL CAP 3/8" | BOUCHON HEXAGONAL 3/8" | SECHSECKFORM PFROPFEN 3/8" | TAPA CON HEXAGON 3/8" |
| GUA11001 | 15 | GUARNIZIONE O-RING Di=29,82 Sp.2,62 | JOINT DI=29,82 SP 2,62 | GASKET DI=29,82 SP 2,62 | DICHTUNG DI=29,82 SP 2,62 | JUNTA DI=29,82 SP 2,62 |
| GUA11011 | 16 | GUARNIZIONE O-RING Di=34,59 Sp.2,62 | JOINT DI=34,59 SP 2,62 | GASKET DI=34,59,62 | DISCHTUNG DI=34,59,62 | JUNTA DI=34,59,62 |
| VIT00201 | 17 | VITE TE 8.8 M 10x20 UNI 5739 DIN 933 | SCREW M 10x20 | VIS M 10x20 | SCHRAUBE M 10x20 | TORNILLO M 10x20 |
| ANS00601 | 18 | ANELLO SEEGER I 100 DIN 472 | SEEGER RING I 100 | ANNEAU SEEGER I 100 | SEEGERRING I 100 | ANILLO SEEGER I 100 |
| VIT02131 | 19 | VITE TCEI 8.8 M 10x25x1,25 ZINCATA | SCREW TCEI M 10x22 | VIS TCEI M 10x22 | SCHRAUBE TCEI M 10x22 | TORNILLO TCEI M 10x22 |
| RON01341 | 20 | ROSETTA SICUREZZA GHIERA MB 7 35x57 | WASHER FOR RING NUT MB 7 35x57 | RONDELLE POUR BAGUE ECROU 7 MB 35x57 | ZAHNSCHIEBE FUER NUTMUTTER MB 7 35x57 | RONDELLE POUR FRETTE MB 7 35x57 |
| F2500.2.002.0 | 21 | -----RUOTA DENTATA INTERMEDIA F25----- | GEAR WHEELS INTERMEDIA F25 | ROUES INTERMEDIA F25 | MITTLERE ZAHNRAEDER F25 | ENGRANAJES INTERMEDIA F25 |
| F2500.2.003.0 | 22 | -----RUOTA DENTATA INFERIORE F25----- | GEAR WHEELS LOWER F25 | ENGRANAGE INFERIEUR F25 | UNTERE SAHNRAEDER F25 | ENGRANAJE INFERIOR F25 |
| CUS00701 | 23 | CUSCINETTO 30207 MARCA KOYO | BEARING 30207 | ROULEMENT 30207 | KUGELLAGER 30207 | COJINETE 30207 |
| ANS00901 | 24 | ANELLO SEEGER I 72 | SEEGER RING I 72 | ANNEAU SEEGER I 72 | SEEGERRING I 72 | ANILLO SEEGER I 72 |
| F2500.2.001.0 | 26 | -----RUOTA DENTATA SUPERIORE F25----- | UPPER GEAR F25----- | ENGRENAGE SUP.F25 | OBERE ZAHNRAD F25 | ENGRANAJE SUPERIOR F25 |
| F250010570 | 25 | -----BOCCOLA SPESSORAMENTO RUOTA DENTATA SUPERIORE----- | ----- | ----- | ----- | ----- |

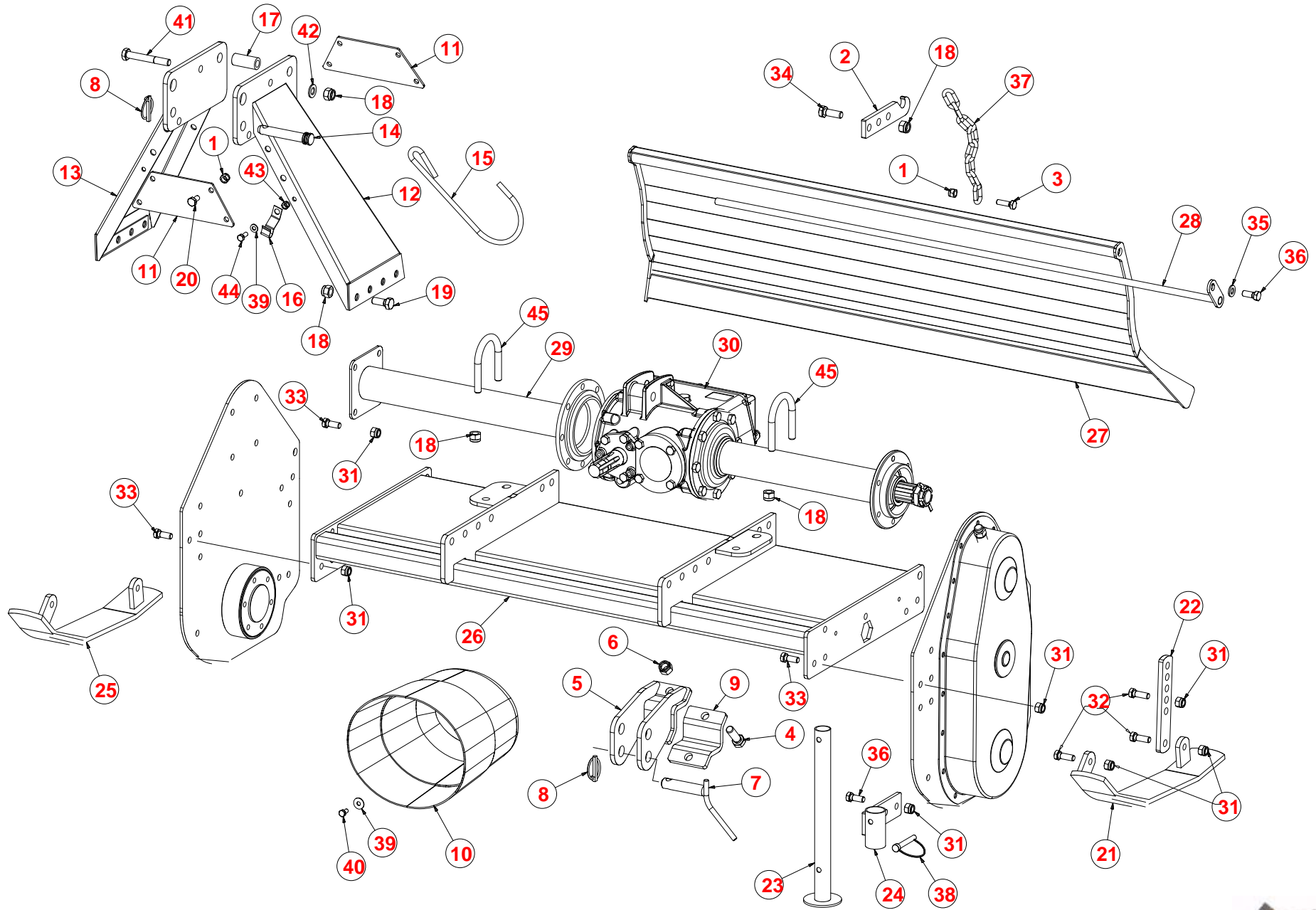


DRAW C



| COD | REF | DESCRIZIONE | DESCRIPTION | DENOMINATION | BENENNUNG | DESCRIPCION |
|---------------|-----|---|---------------------------|---------------------------|---------------------------------|-------------------------|
| F2095011 | 1 | ZAPPA VIRGOLA PER F2 - G25 70X7 SX | HELICOIDAL BLADE F2 LEFT | LAME COUDE F2 GAUCHE | COMMAKACKEN F2 LINKS | COMA AZADA F2 IZQUIERDA |
| F2095010 | 2 | ZAPPA VIRGOLA PER F2 - G25 70X7 DX | HELICOIDAL BLADE F2 RIGHT | LAME COUDE F2 DROITE | COMMAKACKEN F2 RICHT | COMA AZADA F2 DERECHA |
| VIT02721 | 3 | VITE TE 8.8 M 12x1,25x35 ZINC. UNI 5738 DIN 960 PER F1/F3 | SCREW M 12x35x1,25 | VIS M 12x35x1,5 | SCHRAUBE M 12x35x1,25 | TORNILLO M 12x35x1,25 |
| DAG01802 | 4 | DADO M 12x1,25 ALTO CI. 10 DIN 6927 FLANGIATO SCHIACCIATO ZINCATO | WASHER M 12x1,25 HIGH 8.8 | ECROU M 12x1,25 ELEVE 8.8 | MUTTER M 12x1,25 HOCH 8.8 | DADO M 12x1,25 ALTO |
| F2500.3.008.0 | 5 | -----ROTORE F25 - 160 SALDATO----- | ROTOR F25-160 | ROTOR F25-160 | ROTOR F25-160 | ROTOR F25-160 |
| F250030060 | 5 | -----ROTORE F25-120 SALDATO----- | | | | |
| F250030070 | 5 | -----ROTORE F25-140 SALDATO----- | | | | |
| F250030090 | 5 | -----ROTORE F25-180 SALDATO----- | | | | |
| F250030100 | 5 | -----ROTORE F25-200 SALDATO----- | | | | |
| RON01101 | 6 | GROWER PESANTE M12 ZINCATA | GROWER WASHER M 12 | GROWER M 12 LOURDE | ELASTISCHE UNTERLEGSCHIEBE M 12 | ARANDELLA GROWER M 12 |
| VIT02761 | 7 | VITE TE 10.9 M12x1,25x25 UNI 5740 NERA | SCREW TE M12x35x1,25 | VIS TE M12x35x1,25 | SCHRAUBE TE M12x35x1,25 | TORNILLO TE M12x35x1,25 |

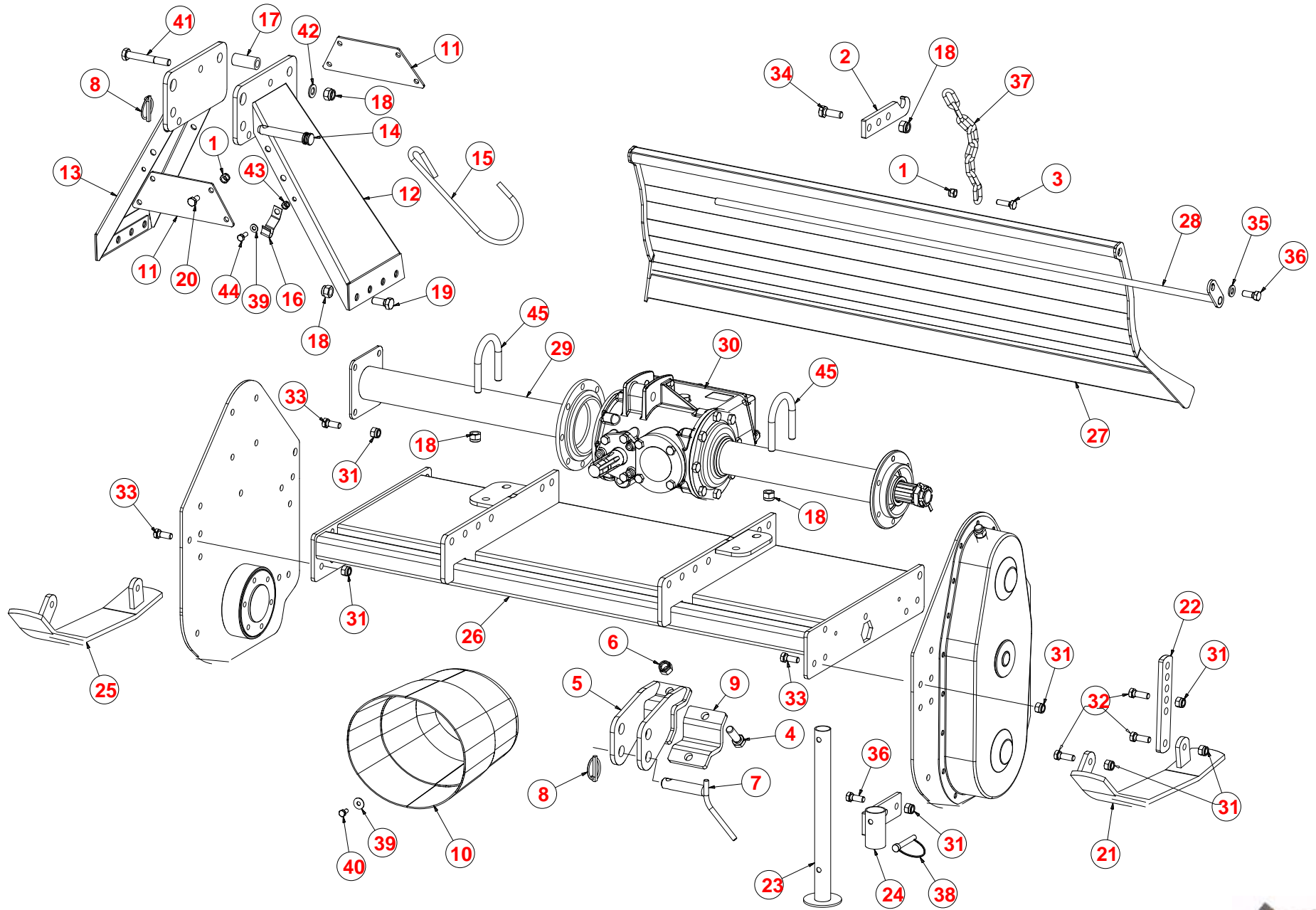
| COD | REF | DESCRIZIONE | DESCRIPTION | DENOMINATION | BENENNUNG | DESCRIPCION |
|----------|-----|---|--------------------------------|--------------------------------------|---------------------------------------|--------------------------------|
| VIT05901 | 1 | VITE TE 8.8 M 10x25 NERA UNI 5739 DIN 933 | SCREW TE 8.8 M10x25 | VIA TE 8.8 M 10x25 | SCHRAUBE TE 8.8 M 10x25 | TORNILLO TE 8.8 M 10x25 |
| VIT00501 | 3 | VITE TE M 12x30 UNI 5739 DIN 933 | SCREW M 12x30 | VIS M 12x30 | SCHRAUBE M 12x30 | TORNILLO TE M 12x30 |
| TAP03001 | 4 | TAPPO LIVELLO CON ASTA 1/2" MZ1A | OIL CAP 1/2" | BOUCHON HUILE 1/2" | OLSTANDSCHRAUBE 1/2" | TAPA NIVEL ACETE 1/2" |
| RO241601 | 5 | INGRANAGGIO CAMBIO MZ1A Z20 | GEAR MZ1A Z20 | ENGRENAGE MZ1A Z20 | RAEDER-GETRIEBE MZ1A Z20 | ENGRANAJE MZ1A Z20 |
| RO241801 | 6 | INGRANAGGIO CAMBIO MZ1A Z18 | GEAR MZ1A Z18 | ENGRENAGE MZ1A Z18 | RAEDER-GETRIEBE MZ1A Z18 | ENGRANAJE MZ1A Z18 |
| RO241501 | 7 | INGRANAGGIO CAMBIO MZ1A Z21 | GEAR MZ1A Z21 | ENGRENAGE MZ1A Z21 | RAEDER-GETRIEBE MZ1A Z21 | ENGRANAJE MZ1A Z21 |
| RO241701 | 8 | INGRANAGGIO CAMBIO MZ1A Z17 | GEAR MZ1A Z17 | ENGRENAGE MZ1A Z17 | RAEDER-GETRIEBE MZ1A Z17 | ENGRANAJE MZ1A Z17 |
| GUA09601 | 9 | GUARNIZIONE CARTER MZ1A | CASING GASKET MZ1A | JOINT CARTER MZ1A | GEHAUSEDICHTUNG MZ1A | JUNTA CARTER MZ1A |
| RO241401 | 10 | CARTER MZ1A | CARTER MZ1A | CARTER MZ1A | GEHAUSE MZ1A | CARTER MZ1A |
| VIT00100 | 11 | VITE TE M 8x20 NERA UNI 5739 | SCREW TE M8x20 | VIS TE M 8x20 | SCHRAUBE TE M 8x20 SCHWARZE | TORNILLO TE M 8x20 NERO |
| VIT03811 | 12 | VITE TE 8.8 M 8x35 UNI 5739 ZINCATA | SCREW M 8x35 | VIS TE M 8x35 | SCHRAUBE TE M 8x35 VERZINKT | TORNILLO TE M 8x35 |
| GUA09401 | 13 | GUARNIZIONE PROLUNGA MZ1A | EXTENSION GASKET MZ1A | JOINT RALLONGE MZ1A | VERLENGERUNGSDICHTUNG MZ1A | JUNTA PARA PROLONGA MZ1A |
| DAG00741 | 14 | DADO M 30x2 H12 | NUT M 30x2 | ECROU M 30x2 | MUTTER M 30x2 | DADO M30x2 |
| RO241911 | 15 | CORONA CONICA MZ1A Z23 Rapp. 1,6:1 | CROWN MZ1A Z23 | COURONNE MZ1A Z23 | KONISCHE KRANZ MZ1A Z23 | CORONA MZ1A Z23 |
| SPC00941 | 16 | LINGUETTA TEMPRATA A 10x8x35 | TONGUE A 10x8x35 | LANGUETTE A 10x8x35 | KEIL A 10x8x35 | LENGUETA TEMPLADA A 10x8x35 |
| RO241301 | 17 | BOCCOLA PARAOLIO MZ1A | BUSH MZ1A | BAGUE MZ1A | BUECHSE MZ1A | BUJE MZ1A |
| ANS06201 | 18 | SPESSORE DI REGISTRAZIONE 55,3x67,7x0,5 | ADJUSTER SHIM 55,3x67,7 | CALE DE REGLAGE 55,3x67,7 | STAERKE 55,3x67,7 | ESPESSOR DE REGISTRO 55,3x67,7 |
| CUS00801 | 19 | CUSCINETTO 6311 2Z MARCA ZKL | BEARING 6311 2Z | ROULEMENT 6311 2Z | KUGELLAGER 6311 2Z | COJINETE 6311 2Z |
| GUA05151 | 20 | ANELLO DI TENUTA 55x68x8 | OIL SEAL 55x68x8 | PARE-HUILE 55x68x8 | OLABDICHTUNG 55x68x8 | ANILLO 55x68x8 |
| RO240101 | 21 | PROLUNGA MZ1A 120 | EXTENSION MZ1A 120 | RALLONGE MZ1A 120 | VERLENGERUNGSSTUECK MZ1A 120 | EXTENSION MZ1A 120 |
| RO240201 | 21 | PROLUNGA MZ1A 140 | EXTENSION MZ1A 140 | RALLONGE MZ1A 140 | VERLENGERUNGSSTUECK MZ1A 140 | PROLONGA MZ1A 140 |
| RO240301 | 21 | PROLUNGA MZ1A 160 | EXTENSION MZ1A 160 | RALLONGE MZ1A 160 | VERLENGERUNGSSTUECK MZ1A 160 | PROLONGA MZ1A 160 |
| RO240401 | 21 | PROLUNGA MZ1A 180 | EXTENSION MZ1A 180 | RALLONGE MZ1A 180 | VERLENGERUNGSSTUECK MZ1A 180 | PROLONGA MZ1A 180 |
| RO240501 | 21 | PROLUNGA MZ1A 200 | RALLONGE MZ1-200 | EXTENSION MZ1-200 | VERLENGERUNGSSTUECK MZ1-200 | PROLONGA MZ1-200 |
| VIT02021 | 22 | VITE TE 8.8 M10x1,25x25 UNI 5740 DIN 961 NERA | SCREW M 10x25x1,25 | VIS M 10x25x1,25 | SCHRAUBE M 10x25x1,25 | TORNILLO M 10x25x1,25 |
| VLD00301 | 23 | INGRASSATORE DIRITTO M 10x1x18 | GREASE NIPPLE M10 | GRAISSEUR DROIT M10 | SCHMIERNIEPPEL GERADE M10 | ENGRASADOR DERECHO M10 |
| RO240621 | 25 | ALBERO TRASMISSIONE MZ1A 120 Rapp. 1,6:1 | TRANSMISSION SHAFT MZ1A 120 | ARBRE DE TRANSMISSION MZ1A 120 | ANTRIEBSWELLE MZ1A 120 | EJE DE TRANSMISSION MZ1A 120 |
| RO240721 | 25 | ALBERO TRASMISSIONE MZ1A 140 Rapp. 1,6:1 | TRANSMISSION SHAFT MZ1A 140 | ARBRE DE TRANSMISSION MZ1A 140 | ANTRIEBSWELLE MZ1A 140 | EJE DE TRANSMISSION MZ1A 140 |
| RO240821 | 25 | ALBERO TRASMISSIONE MZ1A 160 Rapp. 1,6:1 | TRANSMISSION SHAFT MZ1A 160 | ARBRE DE TRANSMISSION MZ1A 160 | ANTRIEBSWELLE MZ1A 160 | EJE DE TRANSMISSION MZ1A 160 |
| RO240921 | 25 | ALBERO TRASMISSIONE MZ1A 180 Rapp. 1,6:1 | TRANSMISSION SHAFT MZ1A 180 | ARBRE DE TRANSMISSION MZ1A 180 | ANTRIEBSWELLE MZ1A 180 | EJE DE TRANSMISSION MZ1A 180 |
| RO241021 | 25 | ALBERO TRASMISSIONE MZ1A 200 Rapp. 1,6:1 | TRANSMISSION SHAFT MZ1-200 | ARBRE DE TRANSMISSION MZ1-200 | ANTRIEBSWELLE MZ1-200 | EJE DE TRANSMISSION MZ1-200 |
| GUA05901 | 26 | ANELLO DI TENUTA 45x60x8 BASL | OIL SEAL 45x60x8 | PARE HUILE 45x60x8 | OLABDICHTUNG 45x60x8 | ANILLO 45x60x8 |
| CUS00301 | 27 | CUSCINETTO 6309 MARCA ZKL | BEARING 6309 | ROULEMENT 6309 | KUGELLAGER 6309 | COJINETE 6309 |
| DAG00751 | 29 | DADO A CORONA M 30x2 | CROWN NUT M 30x2 | ECROU COURONNE M 30x2 | MUTTER KRANZ M 30x2 | DADO A CORONA M 30x2 |
| SPC02301 | 30 | COPIGLIA B 6x60 | SPRING PIN B 6x60 | GOUPILLE B 6x60 | SPLINT B 6x60 | ESPINA B 6x60 |
| RO241101 | 31 | SCATOLA MZ1A | GEARBOX HOUSING MZ1A | CORP REDUCTEUR MZ1A | GETRIEBEGEHAUSE MZ1A | CAJA MZ1A |
| CUS03301 | 32 | CUSCINETTO 30307 | BEARING 30307 | ROULEMENT 30307 | KUGELLAGER 30307 | COJINETE 30307 |
| RO242011 | 33 | ALBERO-PIGNONE CONICO MZ1A Z14 Rapp. 1,6:1 | PINION-SHAFT Z14 MZ1A | ARBRE-PIGNON Z14 MZ1A | KONISCHE RITZELWELLE MZ1A Z14 | ARBOL PINION CONICO Z14 MZ1A |
| CUS01001 | 34 | CUSCINETTO 30308 | BEARING 30308 | ROULEMENT 30308 | KUGELLAGER 30308 | COJINETE 30308 |
| ANS06401 | 35 | SPESSORE DI REGISTRAZIONE 90,3x89,7 | ADJUSTER SHIM 90,3x89,7 | CALE DE REGLAGE 90,3x89,7 | STAERKE 90,3x89,7 | ESPESSOR DE REGISTRO 90,3x89,7 |
| GUA09701 | 36 | GUARNIZIONE COPERCHIO INTERMEDIO MZ1A | INTERMEDIATE COVER GASKET MZ1A | JOINT DU COUVERCLE INTERMEDIARE MZ1A | ZWISCHENLIEGENDE DICHTUNGSDECKEL MZ1A | JUNTA PARA TAPA MZ1A |
| RO242101 | 37 | COPERCHIO INTERMEDIO MZ1A | INTERMEDIATE COVER MZ1A | COUVERCLE INTERMEDIARE MZ1A | ZWISCHENLIEGENDE DECKEL MZ1A | INTERMEDIO TAPA MZ1A |
| ANS00601 | 39 | ANELLO SEEGER I 100 DIN 472 | SEEGER RING I 100 | ANNEAU SEEGER I 100 | SEEGERRING I 100 | ANILLO SEEGER I 100 |
| GUA06001 | 40 | ANELLO DI TENUTA 35x72x10 BASL | OIL SEAL 35x72x10 | PARE-HUILE 35x72x10 | OLABDICHTUNG 35x72x10 | ANILLO 35x72x10 |
| TAP00401 | 45 | TAPPO CON ESAGONO 3/8" GAS CIECO | HEXAGONAL CAP 3/8" | BOUCHON HEXAGONAL 3/8" | SECHSECKFORM PFROPFEN 3/8" | TAPA CON HEXAGON 3/8" |
| CUS03301 | 46 | CUSCINETTO 30307 | BEARING 30307 | ROULEMENT 30307 | KUGELLAGER 30307 | COJINETE 30307 |
| RO241201 | 47 | ALBERO DI ENTRATA MZ1A | INPUT SHAFT MZ1A | ARBRE ENTREE MZ1A | ANTRIEBSWELLE MZ1A | ARBOL DE ENTRADA MZ1A |
| CUS00701 | 48 | CUSCINETTO 30207 MARCA KOYO | BEARING 30207 | ROULEMENT 30207 | KUGELLAGER 30207 | COJINETE 30207 |



DRAW E



| COD | REF | DESCRIZIONE | DESCRIPTION | DENOMINATION | BENENNUNG | DESCRIZION |
|---------------|-----|---|-------------------------------------|---------------------------------|--|---------------------------------|
| DAG00101 | 1 | DADO AUTOBL. 982 C.8 10x1,5 MA ZIN. B. | NUT 982 C.8 10x1,5 MA ZIN. B. | ECROU 982 C.8 10x1,5 MA ZIN. B. | MUTTER 982 C.8 10x1,5 MA ZIN. B. | DADO 982 C.8 10x1,5 MA ZIN. B. |
| F3110005 | 2 | PIASTRINA REGGI CATENA NUOVA F3 | REGGIO CHAIN PLATE NEW F3 | REGGIO DE CHAINE PLAQUE NEW F3 | PLATTE REGGI CHAIN NEW F3 | PLACA REGGIO DE CADENA NUEVA F3 |
| VIT00411 | 3 | VITE TE 8.8 UNI5739 10x35 ZINCATA | SCREW M 10x35 | VIS M 10x35 | SCHRAUBE TE M 10x35 VERZINKT | TORNILLO M 10x35 |
| VIT01501 | 4 | VITE TE 8.8 UNI 5739 M 16x50 ZINCATA | SCREW M16x50 | VIS M16x50 | SCHRAUBE TE M16x50 VERZINKT | TORNILLO M16x50 |
| F2500.3.001.0 | 5 | -----BRACCETTO F25 SALDATO----- | -----LINK ARM F25----- | BRAS D ATTELAGE F25 | VORDEREANSCHLUSSGABEL F25 | BRACETE ANTERIOR F25 |
| DAG00401 | 6 | DADO AUTOBL. 982 C.8 16x2 MA ZIN. B. | NUT 982 C.8 16x2 MA ZIN. B. | ECROU 982 C.8 16x2 MA ZIN. B. | SELBSTSTOPP MUTTER 982 C.8 16x2 MA ZIN. B. | DADO 982 C.8 16x2 MA ZIN. B. |
| SPC00201 | 7 | PERNO CON MANICO D.22x100 | PIN 22x100 | GOUJON 22x100 | BOLZEN 22x100 | PIN 22x100 |
| SPC00511 | 8 | SPINA A SCATTO D.9 | PIN D= 9 | GOUPILLE D= 9 | BOLZEN D= 9 | ESPINA D= 9 |
| F2500.1.003.0 | 9 | -----MORSETTO DIAGONALE 50x50----- | -----SQUARE SCREW F25----- | VIS CARRE F25 | BUGELBOLZEN F25 | ABRAZADERA F25 |
| GUP00351 | 10 | CONTROCUFFIA OVALE G25/G35 | SAFETY CONES | CACHE | SCHUTZTOEPE | CONTA COFIA OVAL |
| F250010090 | 11 | -----PIASTRA CHIUSURA ATTACCO 3P F25 Sp.4----- | ----- | | | |
| F250030040 | 12 | -----FIANCO Sx ATTACCO 3P F25 SALDATO----- | ----- | | | |
| F250030050 | 13 | -----FIANCO Dx ATTACCO 3P F25 SALDATO----- | ----- | | | |
| SPC01701 | 14 | SPINA TERZO PUNTO 1a CATEGORIA D.19 L=110 | PIN FOR 3-POINT 3° CAT. | GOUJON HAUT 3° CAT. | SPLINT III KAT. | ESPINA PARA ENGANCHE 3° CAT. |
| F1099010 | 15 | SOSTEGNO ALBERO CARDANICO F1 ZINCATO | CARDAN SHAFT | SUPPORT CARDAN | HALTERUNG FUR GELENKWELLE | SOSTEN PARA ARBOL |
| SPC04510 | 16 | GANCIO FERMO SOSTEGNO ALBERO CARDANICO ZINCATO | SUPPORT CARDAN SHAFT | SUPPORT CARDAN | GELENKWELLE HALTERUNG | SOSTEN PARA CARDAN |
| FR00010500 | 17 | -----BOCCOLA 25X15X55----- | ----- | | | |
| DAG00301 | 18 | DADO M 14 AUTOBLOCCANTE ALTO UNI 7473 DIN 982 | NUT M 14 | ECROU M 14 | MUTTER M 14 | DADO M 14 |
| VIT02811 | 19 | VITE TE M 14x35 ZINCATA UNI 5739 DIN 933 | SCREW M 14x35 | VIS M 14x35 | SCHRAUBE TE M 14x35 VERZINKT | TORNILLO M 14x35 |
| VIT00211 | 20 | VITE TE M 10x20 ZINCATA UNI 5739 DIN 933 | SCREW M 10x20 | VIS M 10x20 | SCHRAUBE TE M 10x20 VERZINKT | TORNILLO TE M 10x20 BERNIZADA |
| F250030210 | 21 | -----SLITTA Sx F25 SALDATA----- | ----- | | | |
| F250010520 | 22 | -----REGISTRO SLITTA F25----- | ----- | | | |
| F250030240 | 23 | -----PIEDINO DI APPPOGGIO F25 SALDATO----- | ----- | | | |
| F250030250 | 24 | -----PORTA PIEDINO F25 SALDATO----- | ----- | | | |
| F250030220 | 25 | -----SLITTA Dx F25 SALDATA----- | ----- | | | |
| F250030110 | 26 | -----TELAIO F25-120----- | ----- | | | |
| F250030120 | 26 | -----TELAIO F25-140----- | ----- | | | |
| F250030130 | 26 | -----TELAIO SALDATO F25-160----- | ----- | | | |
| F250030140 | 26 | -----TELAIO SALDATO F25-180----- | ----- | | | |
| F250030150 | 26 | -----TELAIO SALDATO F25-200----- | ----- | | | |
| F250030160 | 27 | -----COFANO POSTERIORE F25-120----- | ----- | | | |
| F250030170 | 27 | -----COFANO POSTERIORE F25-140----- | ----- | | | |
| F250030180 | 27 | -----COFANO SALDATO F25-160----- | ----- | | | |
| F250030190 | 27 | -----COFANO SALDATO F25-180----- | ----- | | | |
| F250030200 | 27 | -----COFANO SALDATO F25-200----- | ----- | | | |
| F2000.3.008.0 | 28 | -----PERNO CERNIERA F2 - 120 SALDATO----- | -----PIN FOR BONNET F2-120----- | GOUJON POURCAPOT F2-120 | STIFTFUR KURZE F2-120 | PIN POR CAPO F2-120 |
| F250030270 | 28 | -----PERNO CERNIERA COFANO F25-140 SALDATO----- | ----- | | | |
| F250030280 | 28 | -----PERNO CERNIERA COFANO F25-160 SALDATO----- | ----- | | | |
| F250030290 | 28 | -----PERNO CERNIERA COFANO F25-180 SALDATO----- | ----- | | | |
| F250030300 | 28 | -----PERNO CERNIERA F2-200 SALDATO----- | ----- | | | |
| F250030260 | 29 | -----PROLUNGA MZ1 PER F25-120 SALDATA----- | ----- | | | |
| F3000.3.032.0 | 29 | -----PROLUNGA MZ1 PER F3-180 SALDATA----- | -----MZ1 EXTENSION FOR F25-180----- | MZ1 RALLONGE F25-180 | MZ1-AUSDEHNUNG F25-180 | MZ1 PROLONGA F25-180 |
| F3000.3.033.0 | 29 | -----PROLUNGA MZ1 PER F3-200 SALDATA----- | -----MZ1 EXTENSION FOR F25-200----- | MZ1 RALLONGE F25-200 | MZ1 AUSDEHNUNG F25-200 | MZ1 PROLONGA F25-200 |
| F300030300 | 29 | -----PROLUNGA MZ1 PER F25-140 SALDATA----- | ----- | | | |
| F300030310 | 29 | -----PROLUNGA MZ1 PER F25-160 SALDATA----- | ----- | | | |
| RO240003 | 30 | RIDUTTORE MZ1A 120 COMPLETO Rapp:1,6:1 | COMPLETE GEARBOX MZ1A 120 | REDUCTEUR MZ 1A 120 | GETRIEBE MZ1A 120 KPL. | REDUCTOR MZ1A 120 |
| RO240013 | 30 | RIDUTTORE MZ1A 140 COMPLETO Rapp:1,6:1 | COMPLETE GEARBOX MZ1A 140 | REDUCTEUR MZ 1A 140 | GETRIEBE MZ1A 140 KPL. | REDUCTOR MZ1A 140 |
| RO240023 | 30 | RIDUTTORE MZ1A 160 COMPLETO Rapp:1,6:1 | COMPLETE GEARBOX MZ1A 180 | REDUCTEUR MZ 1A 180 | GETRIEBE MZ1A 180 KPL. | REDUCTOR MZ1A 180 |
| RO240033 | 30 | RIDUTTORE MZ1A 180 COMPLETO Rapp:1,6:1 | COMPLETE GEARBOX MZ1A 180 | REDUCTEUR MZ 1A 180 | GETRIEBE MZ1A 180 KPL. | REDUCTOR MZ1A 180 |
| RO240043 | 30 | RIDUTTORE MZ1A 200 COMPLETO Rapp:1,6:1 | COMPLETE GEARBOX MZ1A 200 | REDUCTEUR MZ 1A 200 | GETRIEBE MZ1A 200 KPL. | REDUCTOR MZ1A 200 |
| DAG00201 | 31 | DADO M 12x1,75 AUTOBLOCCANTE 982 C.8 | NUT M 12x1,75 982 C.8 | ECROU M 12x1,75 982 C.8 | MUTTER M12x1,75 982 C.8 | DADO M 12x1,75 982 C.8 |
| VIT02711 | 32 | VITE TE 8.8 M 12x35 ZINCATA UNI 5739 DIN 933 | SCREW TE 8.8 M 12x35 | VIS TE 8.8 M 12x35 | SCHRAUBE TE 8.8 M 12x35 VERZINKT | TORNILLO TE 8.8 M 12x35 |
| VIT00501 | 33 | VITE TE M 12x30 UNI 5739 DIN 933 | SCREW M 12x30 | VIS M 12x30 | SCHRAUBE M 12x30 | TORNILLO TE M 12x30 |
| VIT01011 | 34 | VITE TE 8.8 5739 14x40 ZINCATA | SCREW M 14x40 | VIS M 14x40 | SCHRAUBE TE M 14x40 VERZINKT | TORNILLO TE M 14x40 |
| RON00501 | 35 | ROSETTA PIANA Di=13 De=24 Sp.=2,5 UNI 6592 DIN 125A | ZINC SPHER DI=12 DE=24 | RONDELLE DI=12 DE=24 | SCHEIBE DI=12 DE=24 | ARANDELA DI=12 DE=24 |
| VIT00511 | 36 | VITE TE 8.8 M 12x30 ZINCATA UNI 5739 DIN 933 | SCREW M 12x30 | VIS M 12x30 | SCHRAUBE TE M 12x20 VERZINKT | TORNILLO M 12x30 |
| F4000.1.068.0 | 37 | -----SPEZZONE CATENA REGGICOFANO POSTERIORE----- | -----CHAIN SPLIT RINGS----- | CHAINE 15 ANNEAUX | KETTEN 15 RING | CADENA15 ANILLO |
| SPC00551 | 38 | SPINOTTO D.10x80 CON FERMO A CHIUSURA | SPRING COTTER D=4 | GOUPILLE D=4 | BOLZEN D=4 | ESPINA D=4 |
| RON00461 | 39 | ROSETTA PIANA Di=9 De=24 UNI 6593 DIN126 ZINCATA | WASHER DI=8 DE=24 | RONDELLE DI=8 DE=24 | UNTERLEGSCHIEBE DI=8 DE=24 | ARANDELA DI=8 DE=24 |
| VIT04501 | 40 | VITE TE 8.8 5739 8x16 ZINCATA | SCREW M 8x16 | VIS TE M 8x16 | SCHRAUBE M 8x16 VERZINKT | TORNILLO TE 8.8 5739 8x16 |
| VIT01301 | 41 | VITE TE 8.8 14x100 ZINCATA UNI 5737 DIN 931 | SCREW M 14x100 | VIS M 14x100 | SCHRAUBE M 14x100 VERZINKT | TORNILLO M 14x100 |



DRAW E



| COD | REF | DESCRIZIONE | DESCRIPTION | DENOMINATION | BENENNUNG | DESCRICION |
|------------|------------|--|------------------------|----------------------|-----------------------------------|------------------------------|
| RON00551 | 42 | ROSETTA PIANA Di=15 De=28 Sp=2,5 UNI 6592 DIN 125A ZINCATO | WASHER DI=14 DE=28 | RONDELLE DI=14 DE=28 | UNTERLEGSCHIEBE DI=14 DE=28 | ARANDELLA DI=14 DE=28 |
| DAG01701 | 43 | DADO AUTOBL. 982 C.8 8x1,25 MA ZIN.B | NUT 982 C.8 8x1,25 | ECROU 982 C.8 8x1,25 | SELBSTOPP MUTTER 982 C.8 8x1,25 | DADO 982 C.8 8x1,25 |
| VIT00101 | 44 | VITE TE M 8x20 ZINCATA | SCREW TE M8x20 | VIS TE M 8x20 | SCHRAUBE TE M 8x20 VERZINKT | TORNILLO TE M 8x20 BERNIZADA |
| VIT04384 | 45 | CAVALLOTTO TONDO Di=71 M14 PER MZ1 F25 | SQUARE SCREW 50x50 M12 | VIS CARRE' 50x50 M12 | QUADRATISCH BUGELBOLZEN 50x50 M12 | ATAQUE 50x50 M12 |



46035 Ostiglia Mantova ITALY
Via Brennero Nord, 9 - Zona Industriale
Tel. +39 0386 32691
Fax. +39 0386 31250
www.forigo.it

La presente Ditta si riserva il diritto di modificare, a propria discrezione, i dati contenuti nel libretto qualora lo ritenesse necessario per un miglioramento tecnico o commerciale del prodotto.

The Company reserves the right to modify the data in this manual whenever this is considered necessary for technical or commercial improvements regarding the products itself.

Toujours Soucieux d'améliorer ses productions, Roteritalia se réserve le droit de modifier sans préavis les caractéristiques et les données des matériels présentés dans ce document.

Die herstellerfirma behält sich vor, die in diesem Heft enthaltenen Angaben jederzeit nach eigenem Ermessen abzuändern, wenn das aufgrund technischer oder vertriebsbedingter Verbesserungen erforderlich wird.

La firma Roteritalia se reserva el derecho de modificar sin previo aviso las características de los equipos presentados en esta publicación.