

Barrier Mower RI 60/80



PARTS

UK

1. edition 2016

 **GREENTEC**

Cutting Edge Technology

UK:

This page is intentionally left

DE:

Diese Seite ist absichtlich leer

DK:

Denne side er bevidst blank

GreenTec RI 60/80 Inter-row mower

PARTS

1. Edition – Aug. 2016

Please ensure that this manual is handed to the operator before using the machine for the first time.

If the machine is resold the Parts list must be given to the new owner!

The information contained in this Parts list is correct at the time of publication. However, in the course of constant development, changes in specification are inevitable. Should you find the information given in this book different to the machine it relates to please contact the “After Sales Department” for advice



Merkurvej 25
DK 6000 Kolding
Danmark
Tlf: +45 75553644
Fax: +45 75554243
Email: info@greentec.eu
http: www.greentec.eu

Contents

Introduction	5
Useful information	6
Ordering parts	7
Spare parts	8

INTRODUCTION

Dear customer!

Your new Greentec machine is constructed with background in more than 20 years experience with tractor mounted machines to maintenance of green areas. This machine is produced by the latest technology and recognized safety regulations, standards and regulations.

We want to make a product available in such a way, that neither the use of the machine during transportation or maintenance of the machine causes any damage or misunderstandings.

This parts list contains information that are important and useful for maintaining your Greentec machine's reliability, dependability and value.

You are welcome to visit our website www.greentec.eu - where the login via the dealer's access gives you the latest updates on instructional and part books on our entire product range.

We hope, you will be pleased with your new Greentec machine.



Best regards,



John Christensen
Sales Director Greentec A/S

Greentec's vision is to develop and sell quality machines for the maintenance of green areas, including in agriculture, in industry, at airports and in the local sector. Through innovative product development, we will strive to become a leader in our field.

All machines are developed in a simple and functional design in close cooperation with dealers and end users. It is our goal to cover every need in the market segment with preferably 2 different solutions. In-depth analysis of requirements and serious advice to the customer is offered the best solution, where individual needs can be met through the modularity of the product program.

Our goal is also to offer the best possible after sales service, and a quick and efficient spare parts supply.

USEFUL INFORMATION

Before using the machine for the first time, it's the seller's responsibility that the buyer is given this parts list. If the machine is resold, the parts list must be transferred to the new owner.

Please fill out the list below to ensure that the necessary information is at hand when ordering spare parts etc.

Serial No

Delivery date

Dealer

Tlf./ fax



Merkurvej 25
DK 6000 Kolding
Danmark
Tlf: +45 75553644
Fax: +45 75554243
Email: info@greentec.eu
http: www.greentec.eu
Opening hours: Mon-Fri 8-16

ORDERING PARTS

When ordering parts please refer to your parts list to help your dealer with your order.

- Part number and quantity
- Description
- Machine model number
- Serial number of the machine
- Delivery instructions (e.g. next day).

Delivery is normally via carrier direct to your dealer. Please check with your dealer for stock availability and arrangement of dispatch. Ensure you or your dealer has sufficient cover for parts requirement outside factory hours.

Important Note

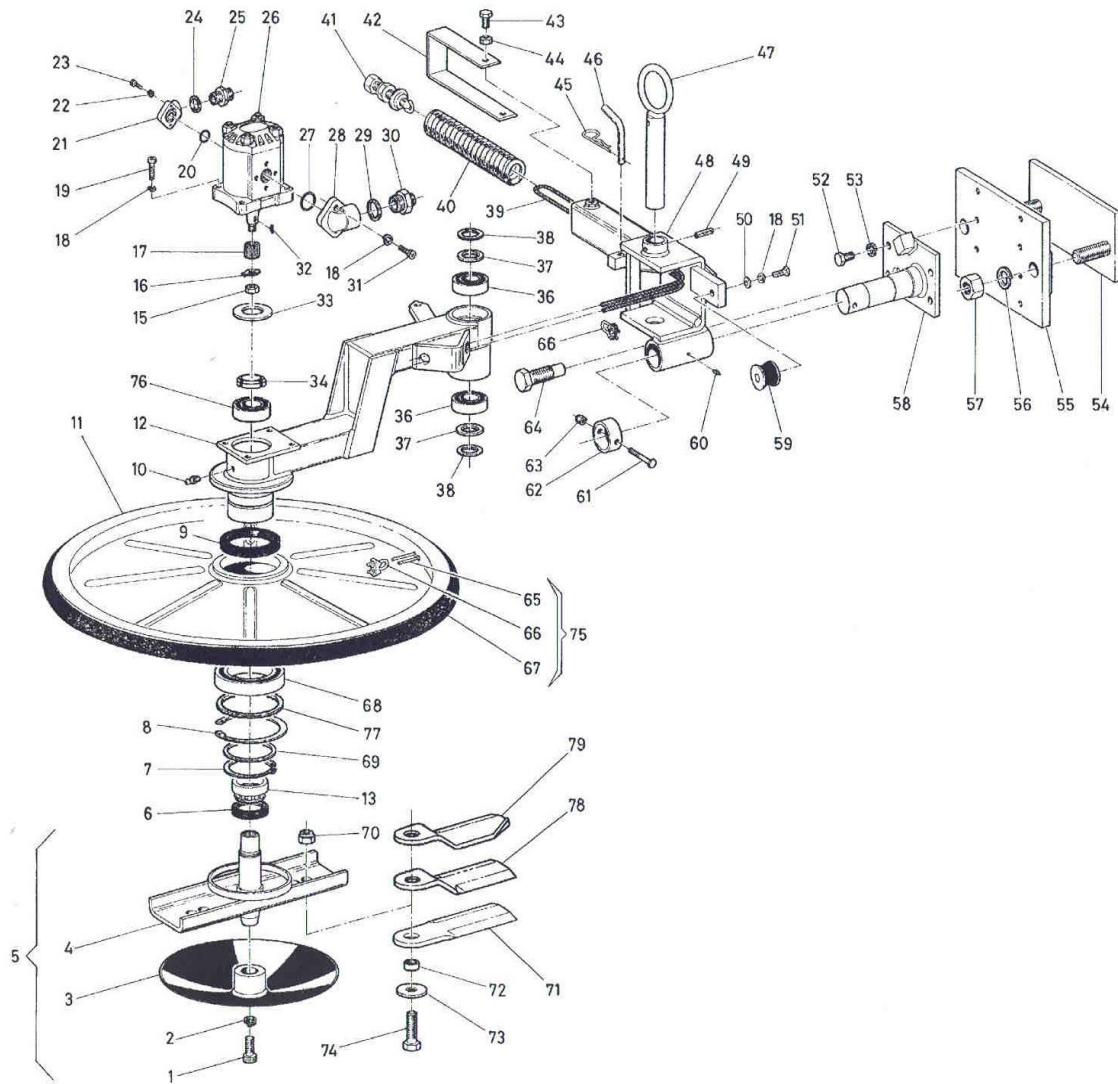
The information contained in this manual is correct at the time of publication. However, in the course of constant development, changes in specification are inevitable. Should you find the information given in this book different to the machine it relates to, please contact the “After Sales Department” for advice.

Key:

LH: Left hand

RH: Right hand

SPARE PARTS



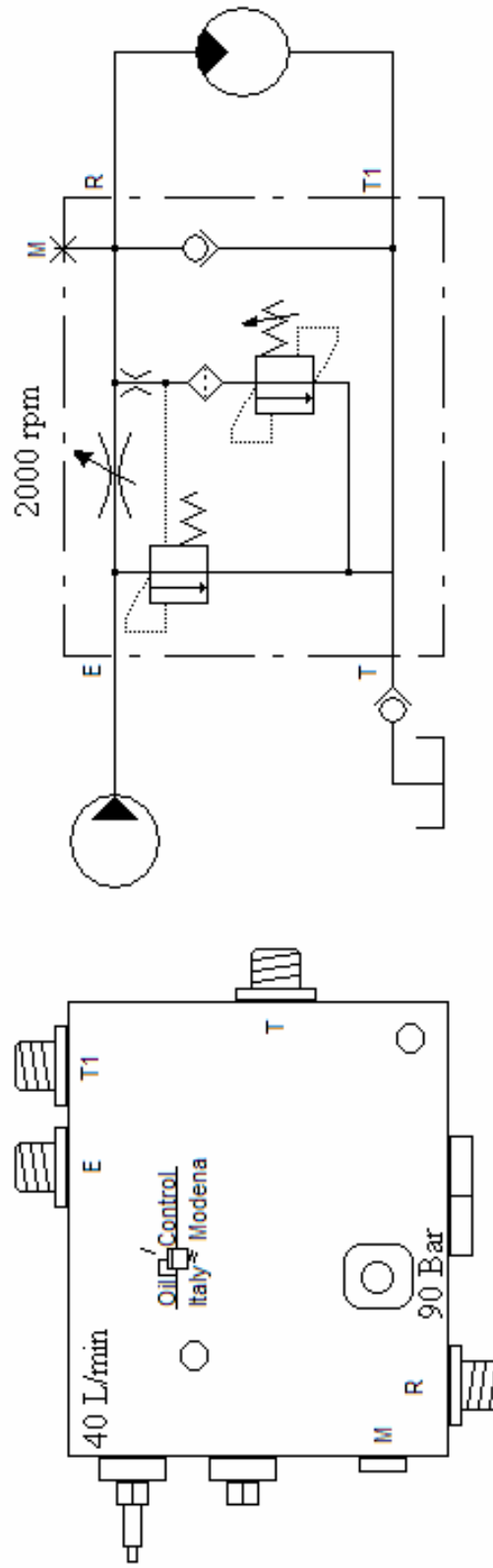
No.	Part number	Description	Qty
1	1521410	M14x30 SX UNI5931	1
2	1214000	Ø14 UNI1751	1
3	3001890		1
4	3004466	Ø50	1
	3001895	Ø60	1
	3001928	Ø80	1
5	3004467	Ø50 (1+2+3+4)	1
	3000557	Ø60 (1+2+3+4)	1
	3001510	Ø80 (1+2+3+4)	1
6	0001810	42x62x10	1
7	1010075	Seeger E75 UNI7435	1
8	1020115	Seeger 1115 UNI7437	1
9	0001858	85x102x10	1
10	0002654	M10x1	1
11	3001280	Ø50	1
	3000559	Ø60	1
	3001509	Ø80	1
12	3000556	Ø50 - Ø60	1
	3002179	Ø80	1
13	0001424	32007	1
15	1021512	M12x1,5 UNI5589	1
16	0002900		1
17	0002901		1
18	1208000	Ø8 UNI1751	7
19	1120810	M8x30 UNI5931	4
20	0001700	aR 3062	1
21	0002308	½"	1
22	1206000	Ø6 UNI1751	2
23	1120608	M6x25 UNI5931	2
24	0002006	½"	1
25	0002305	½"	1
26	0002902		1

No.	Part number	Description	Qty
27	0001701	aR 132	1
28	0002309	¾" x 40	1
29	0002007	¾"	1
30	0002310	¾" – ½"	1
31	1120808	M8x25 UNI5931	2
32	1551004	3x6,5x16 UNI6606	1
33	3000572		1
34	1035635	M35x1,5	1
36	0001422	6206-2RS	2
37	3000571		2
38	3000527		2
39	0001307		1
40	3000577		1
41	3000565		1
42	3001138		1
43	1111006	M10x20 UNI5739	2
44	1012510	M10 UNI1588	2
45	0002115	Ø4	1
46	3000579		1
47	3000574		1
48	30004693		1
49	1608040	8x40 UNI6873	1
50	1309242	8x24x2 UNI6593	1
51	1110810	M8x30 UNI5739	1
52	1111212	M12x35 UNI5739	4
53	1212000	Ø12 UNI1751	4
54	3000564		1
55	3000562		1
56	1222000	Ø22 UNI1751	2
57	1012522	M22 UNI5588	2
58	3004692		1
59	0002104		1

No.	Part number	Description	Qty
60	0002659	M6	1
61	1100824	M8x65 UNI6737	1
62	3000570		1
63	1012408	M8 UNI7474	1
64	3000578		1
65	0001324	Ø50	1
	0001308	Ø60	1
	0001320	Ø80	1
66	0001309		3
67	0002763	Ø50	1
	0002631	Ø60	1
	0002642	Ø80	1
68	0001423	6015-2RS	1
69	3000569		1
70	1012416	M16 UNI7474	2
71	3000107	Ø50	2
	3000580	Ø60-Ø80	2
72	3000500		2
73	3000582		2
74	1111618	M16x50 UNI5739	2
75	0002756	Ø50	1
	0002602	Ø60	1
	0002643	Ø80	1
76	0001450	6007	1
77	3004305	100x114x0,25	1
78	3003045		2
79	3001281		2

E	P fra pompe	P von Pumpe	P from pump	Max. 150 L/min.
R	Reguleret flow	Reguliert Öl menge	Regulated oil flow	Max. 90 L/min.
T1	Retur fra motor	Zurück von Motor	Return from Motor	
T	Tankforbindelse	Tankverbindung	Tank connection	
M	Manometerforslutning	Manometer anchluss	Manometer test plug	

E-R-T1-T = 3/4" Gewind / Thread
M = 1/4" Gewind / Thread





Merkurvej 25 | DK-6000 Kolding | Tel.: +45 7555 3644 | info@GreenTec.eu | www.GreenTec.eu

Cutting Edge Technology