

**1-2 metre
Multicut flailhead
belt drive**

Operation & Spares manual

EC DECLARATION OF CONFORMITY

*Conforming to EEC Machinery Directive 98/37/EC**

We,

McCONNEL LIMITED,

Temeside Works, Ludlow, Shropshire SY8 1JL.

Declare under our sole responsibility that:

The product (type) Hydraulic Arm Mounted Flailhead.....

Product Code BD12, BD16, F110, F112, F115, F012, F016.....

Serial No. & Date Type

Manufactured by the above company/*

.....
(insert business name and full address if not stated above)*

Complies with the required provisions of the Machinery Directive 98/37/EC, * previously Directive 89/392/EEC as amended by Directives 91/368/EEC, 93/44/EEC and 93/68/EEC.

The machinery directive is supported by;

- BS EN ISO 12100:2003 Safety of Machinery. This standard is made up of two parts; Part 1 Terminology, methodology, Part 2 Technical Specifications.
- BS EN 1050 Safety of machinery - Principles of risk assessment.
- and other national standards associated with its design and construction as listed in the Technical File.

The Machinery Directive is fully implemented into UK law by means of the Supply of Machinery (Safety) Regulations 1992 (SI 1992/3073) as amended by The Supply of Machinery (Safety) (Amendment) Regulations 1994 (SI 1994/2063).

Signed John Frank.....

on behalf of McCONNEL LIMITED

Responsible Person

Status: Chief Design Engineer

Date: May 2005



READ THE BOOK FIRST

It might save hours and pounds later!

When ordering spare parts always quote

- **The Machine Type**
- **The Machine Serial Number**
- **The Part Number**

Factory re-built service exchange units of the major hydraulic components are available from your Dealer

NOISE

The equivalent daily personal noise exposure from this machine, measured at the operators' ear, is within the range 78 – 85 dB.

These figures apply to a normal distribution of use where the noise fluctuates between zero and maximum. The figures assume that the machine is fitted to a tractor with a quiet cab with the windows closed in a generally open environment. We recommend that the windows are kept closed.

With the cab rear window open, the equivalent daily personal noise exposure will increase to a figure within the range 82 – 88 dB.

At equivalent daily noise exposure levels of between 85 and 90 dB, ear protection is recommended, it should be used if any window is left open.

GENERAL INFORMATION

Read this manual before fitting or operating the machine. If in doubt contact your dealer or the McConnel Service Department for assistance.

Use only McConnel spare parts on McConnel equipment and machines. Refer to the parts section before ordering spares.

DEFINITION

The following definitions apply throughout this manual:

WARNING

An operating procedure, technique etc., which can result in personal injury or loss of life if not observed carefully.

CAUTION

An operating procedure, technique etc., which can result in the damage of either machine or equipment if not observed carefully.

NOTE An operating procedure, technique etc., which is considered essential to emphasise.

LEFT AND RIGHT-HAND

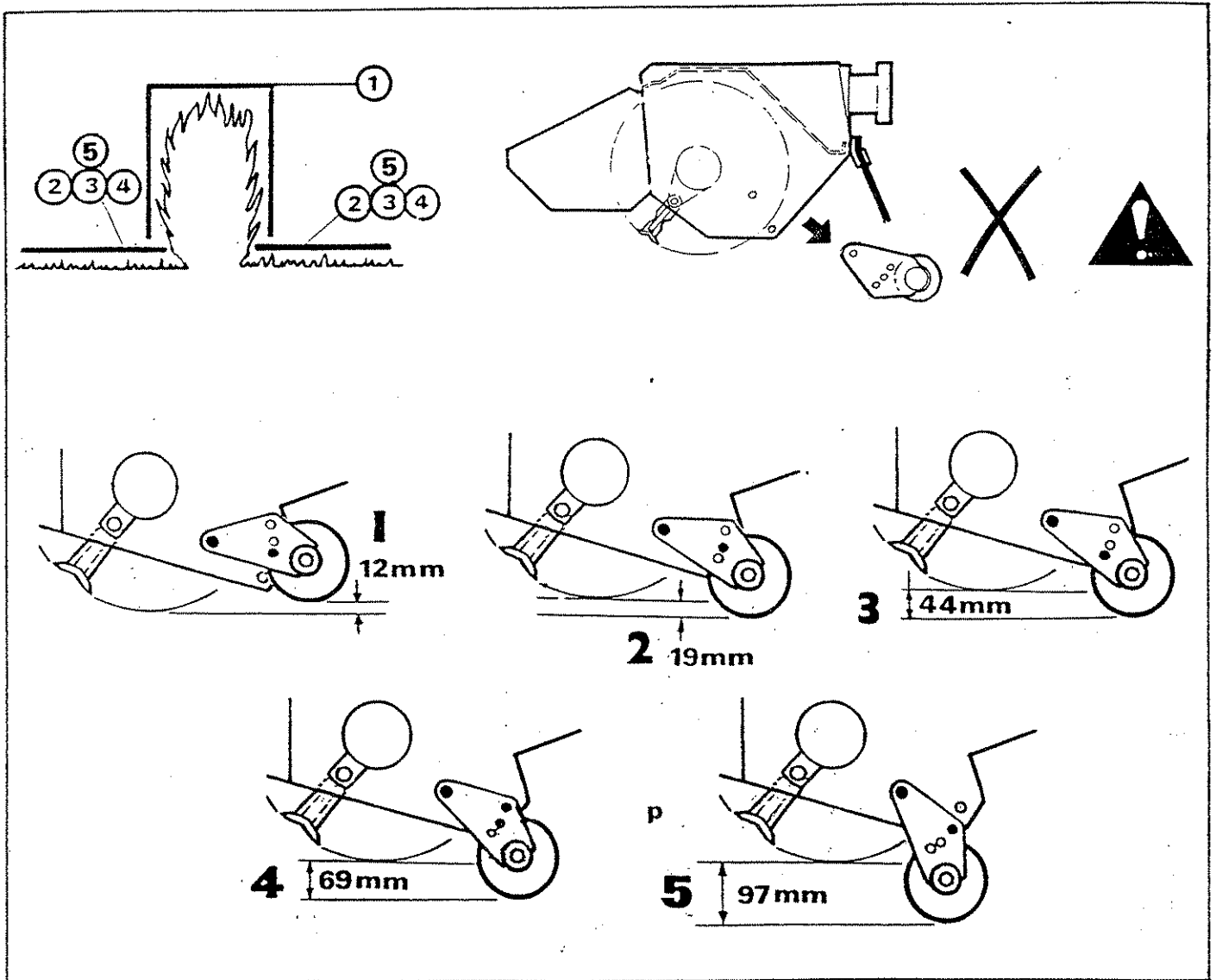
This term is applicable to the machine when fitted to the tractor and viewed from the rear. This also applies to tractor references.

Record the serial number of your machine on this page and always quote this number when ordering spares. Whenever information concerning the machine is requested remember to also state the type of tractor to which it is fitted.

MACHINE SERIAL NUMBER	INSTALLATION DATE

MODEL DETAILS
DEALERS NAME
DEALERS TELEPHONE NUMBER

ROLLER POSITION



SPARE PARTS MANUAL

FOR BEST PERFORMANCE....

USE ONLY McCONNEL SPARE PARTS

To be assured of the latest design improvements purchase your genuine replacements from the original equipment manufacturer **McConnel Ltd.** through your local dealer or stockist.

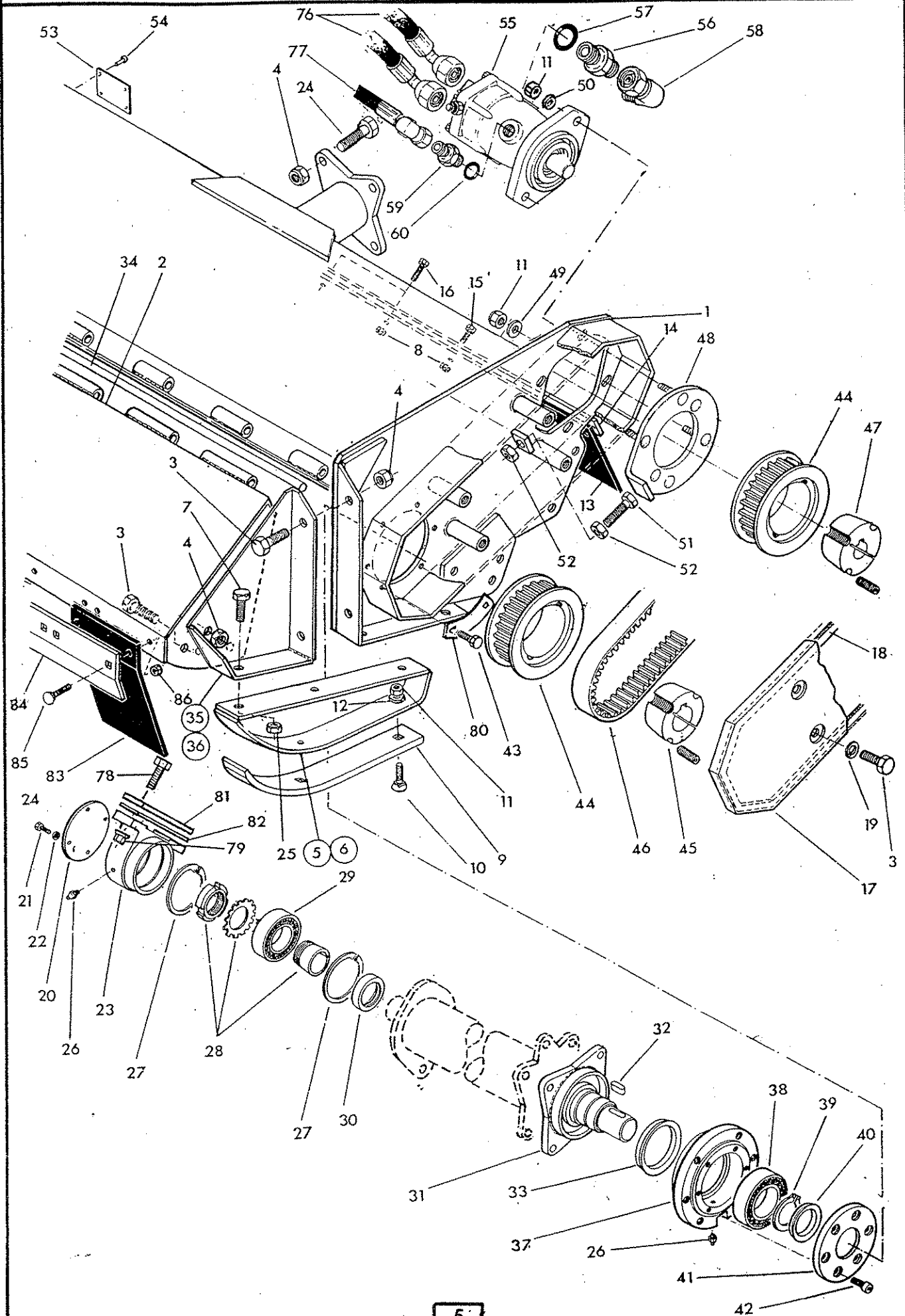
Always quote machine type and serial number as well as the part number.

Design improvement may have altered some of the parts listed in this manual - The latest part will always be supplied when it is interchangeable with an earlier one.

FLAIL HEAD CASING



McDONNELL



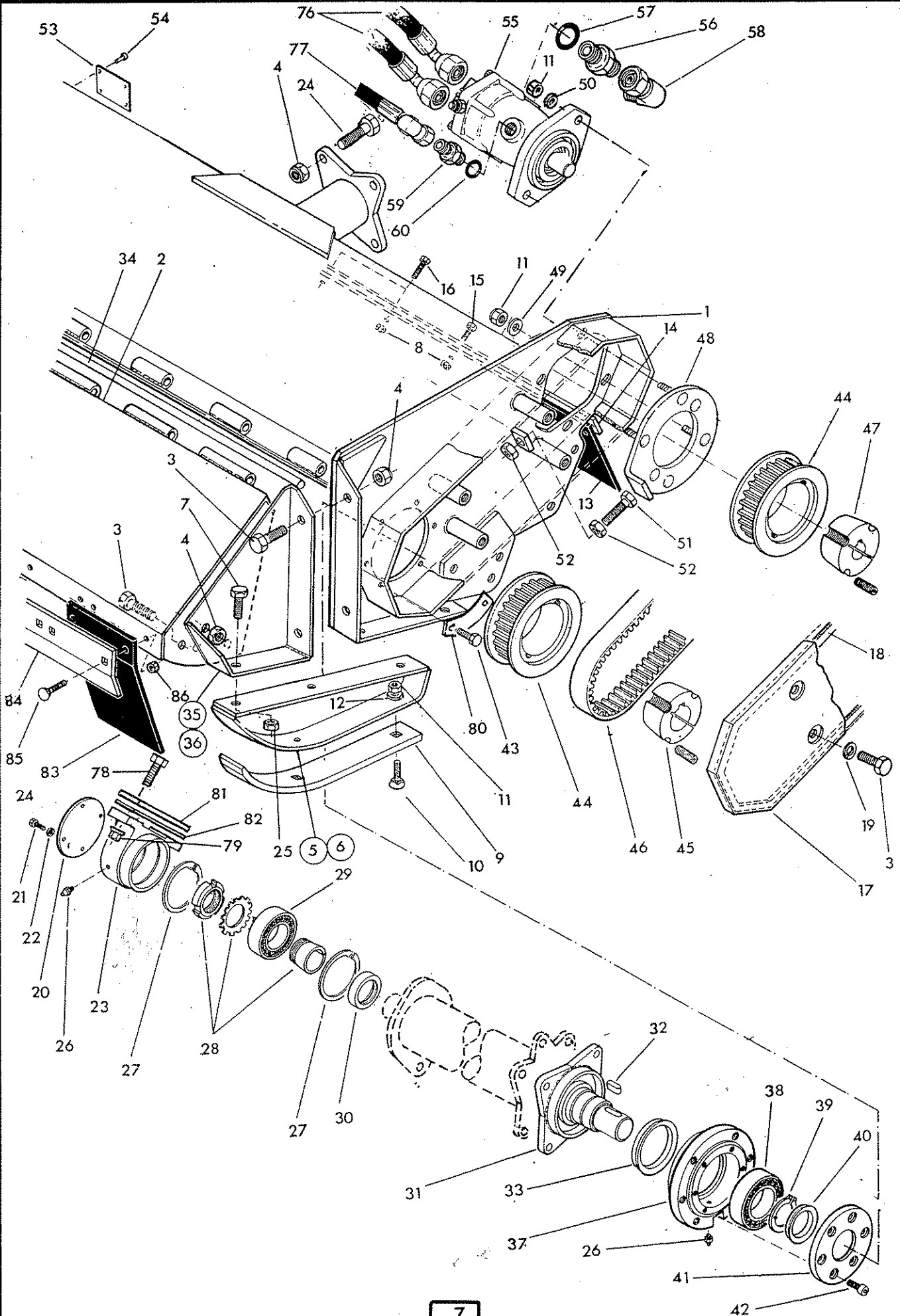


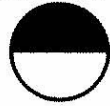
REF	PART NO	QTY	DESCRIPTION
			1.2m BELT DRIVE FLAIL HEAD CASING
1	72 90 352	1	Hood L hand
	72 90 333	1	Hood R hand
2	72 90 386	1	Front hood
3	03 11 106	10	Setscrew
4	01 41 006	10	Self locking nut
5	72 90 389	1	Skid - R hand - not illus.
6	72 90 390	1	Skid - L hand
7	03 11 085	6	Setscrew
8	91 43 005	15	Self locking nut
9	72 90 391	2	Wear skid
10	60 12 034	6	Tine bolt
11	01 42 004	12	Self lock nut
12	01 00 104	6	Plain washer
13	72 90 348	1	Rear flap
14	72 90 347	1	Clamp strip
15	93 13 065	6	Setscrew
16	93 13 075	3	Setscrew
17	72 90 343	1	Belt cover
18	72 90 052	1	Seal strip
19	01 00 206	4	Spring washer
20	72 90 042	1	Bearing cover - free end
21	93 13 033	4	Setscrew
22	91 00 203	4	Spring washer
23	72 90 322	1	Bearing housing
24	02 11 186	6	Bolt
25	01 41 005	6	Self lock nut
26	09 01 121	2	Greaser
27	72 90 056	2	Internal circlip
28	06 00 097	1	Adaptor sleeve assembly
29	06 00 096	1	Bearing - free end
30	72 90 013	1	Bearing adaptor
31	72 90 323	1	Drive hub
32	72 90 017	1	Key
33	72 90 048	1	Seal
34	72 90 061	1	Hood pivot rod
35	72 90 388	1	Hood bracket L hand
36	72 90 387	1	Hood bracket R hand - not illus.
37	72 90 321	1	Bearing housing - drive end
38	06 00 095	1	Bearing - drive end
39	04 01 255	1	External circlip
40	72 90 049	1	Seal
41	72 90 023	1	Bearing retainer
42	93 43 034	6	Capscrew
43	93 13 045	6	Setscrew

FLAIL HEAD CASING



McCORMICK





REF	PART NO	QTY	DESCRIPTION
-----	---------	-----	-------------

1.2m BELT DRIVE FLAIL HEAD
CASING - continued

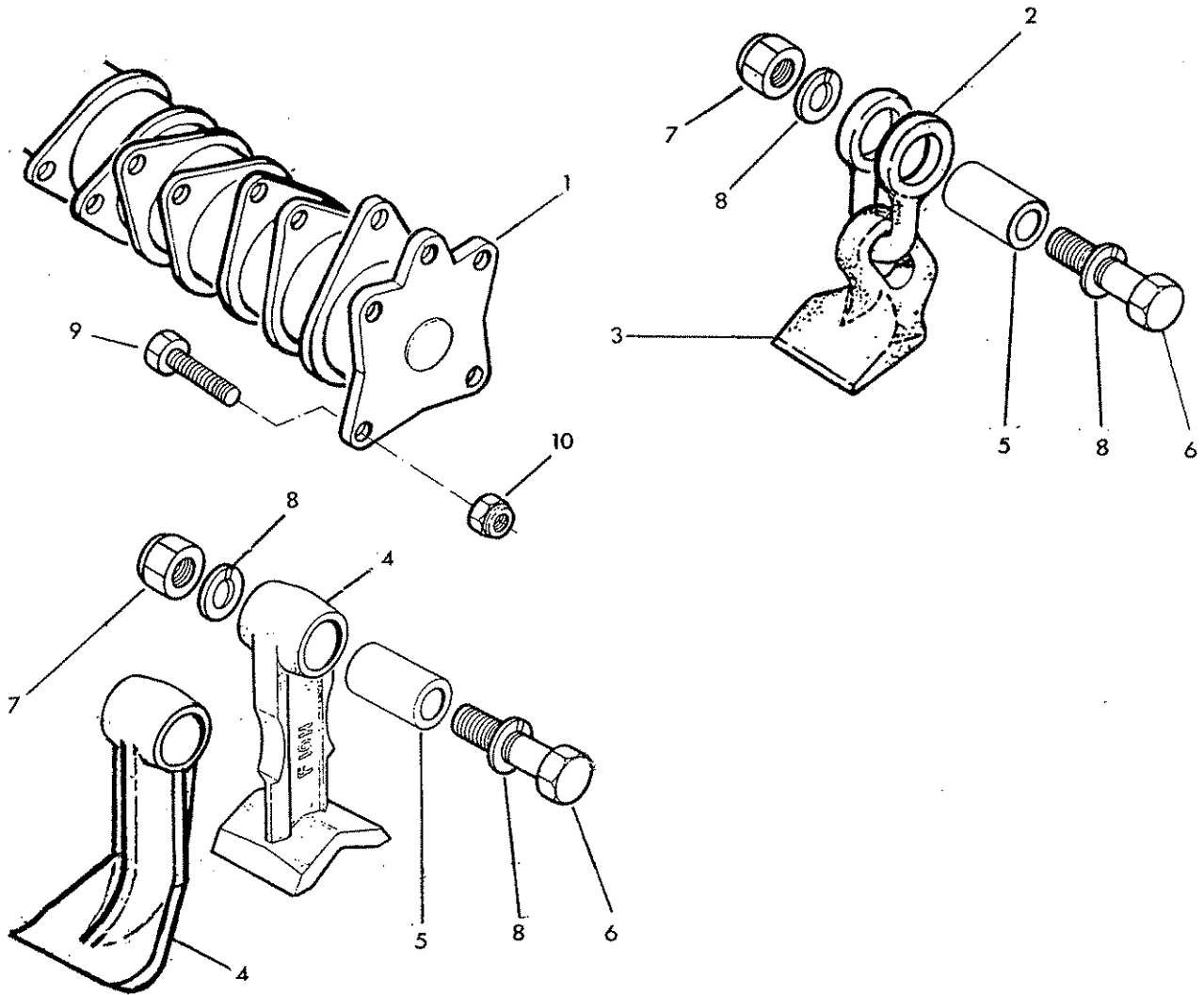
44	72 90 047	2	Drive sprocket
45	72 90 016	1	Taper lock drive bush dia 40
46	72 90 046	1	Belt
47	72 90 016	1	Taper lock drive bush dia 40
48	72 90 429	1	Motor mounting plate L hand
	72 90 427	1	Motor mounting plate R hand
49	72 90 051	4	Special washer
50	01 00 104	2	Plain washer
51	93 13 117	1	Belt adjuster screw
52	91 13 007	2	Nut
53	13 35 246	1	Serial number plate
54	71 03 230	4	Pop rivet
55	83 01 295	1	Piston motor
56	85 81 256	2	Adaptor
57	86 00 916	2	'O'ring
58	85 81 212	2	Elbow
59	85 81 327	1	Adaptor
60	86 00 908	1	'O' ring

74	92 00 017	2	Bolt
75	91 00 022	2	Self locking nut
76	85 01 237	2	Hose 1" BSP x 28" long
77	85 01 222	1	Hose 5/8 BSP x 34" long
78	92 00 023	2	Special bolt
79	91 00 024	2	Special nut
80	72 90 073	3	Tab washer
81	72 90 425	as	Shim
82	72 90 424	reqd	Shim

72 90 375

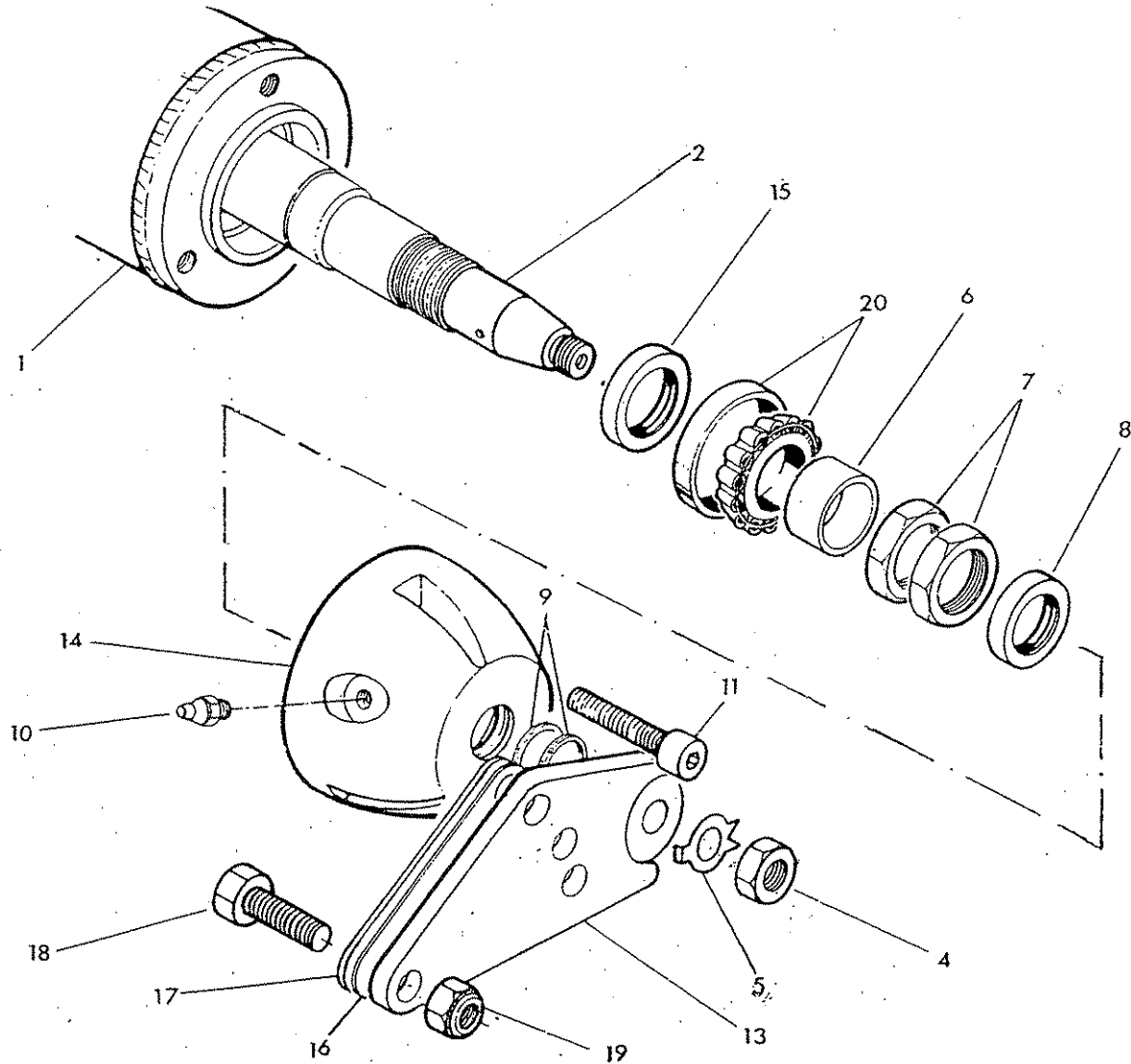
FRONT FLAP KIT

83	72 90 053	8	Flap
84	71 90 304	1	Flap clamp strip
85	92 93 054	16	Cup square bolt
86	91 43 004	16	Self locking nut





Ref	Part No.	Qty	Description
			ROTOR AND FLAILS (WRAP AROUND LUG)
1	71 90 370	1	Rotor
2	71 90 106	24	Shackle
3	71 90 462	24	Flail
4	73 14 366	24	Flail F10H- Cast
	41391 01	24	Flail F10H- Forged
	73 90 276	24	Flail - alternative single edged
5	73 14 223	24	Pivot bush
6	73 14 201	24	Special bolt
7	01 41 006	24	Self locking nut
8	01 00 206	48	Spring washer
9	03 11 146	4	Setscrew
10	01 41 006	4	Self locking nut



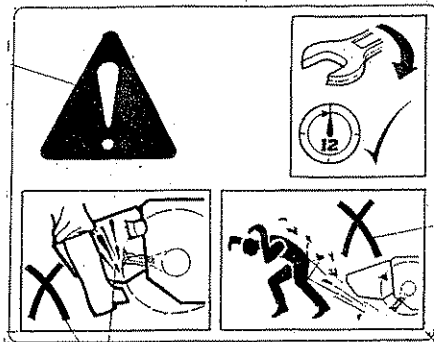
REF	PART NO.	QTY	DESCRIPTION
	42241.26		ROLLER ASSEMBLY
1	42241.01	1	Roller
	42242.14	1	Axle assembly incl.
2	42244.01	1	Axle
3	91 13 008	1	Plain nut R.Hand -not illus.
4	91 00 026	1	Plain nut L.Hand
5	71 90 023	2	Tab washer
6	42245.01	2	Spacer
7	42244.01	4	Locknut
8	86 29 125	2	Seal
9	04 12 120	4	Spirolox ring
10	09 01 121	2	Greaser
11	93 43 075	6	Capscrew
12	42246.02	1	Roller bracket R.Hand -not ullus
13	42246.01	1	Roller bracket L.Hand
14	42243.01	2	End cap
15	86 29 213	2	Seal
16	42257.01	as reqd	Shim
17	42257.02	as reqd	Shim
18	91 13 107	4	Setscrew
19	91 43 007	4	Self locking nut
20	06 00 105	2	Taper roller bearing



McCOMBELL



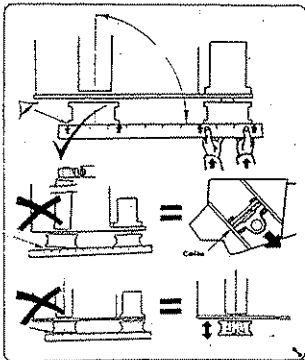
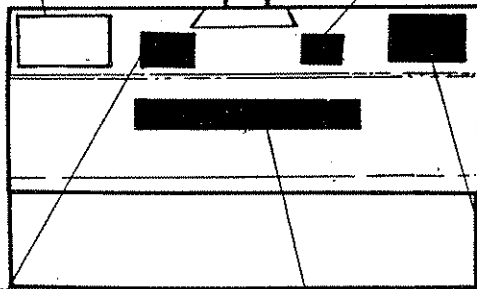
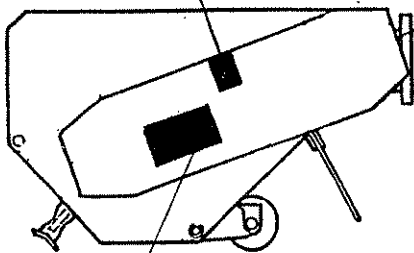
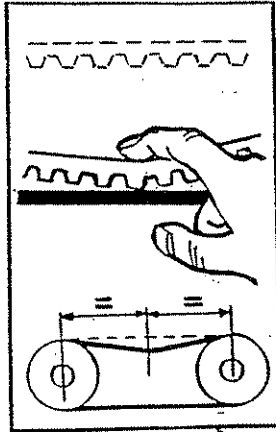
McCORMEL



FLAIL PARTS INFORMATION

McCormel Flail Mowers use dynamically balanced and mated system components for Cutter Shafts (Rotors), Knives (Flails), Knife Hangers (Shackles), Bolts, Bushes, Rollers, Drivetrain Components, Bearings Belts and Belt Pulleys. McCormel parts are made and tested to meet close-tolerance specifications of balance, quality and consistency that assure long, trouble-free service. "Will-Fit" parts do not ordinarily meet McCormel Standards and could reduce Mower performance, void warranties, and present an increase in the safety hazard potential.

DONT GAMBLE!
USE GENUINE McCORMEL SERVICE PARTS
See your McCormel dealer.



McCORMEL

DANGER

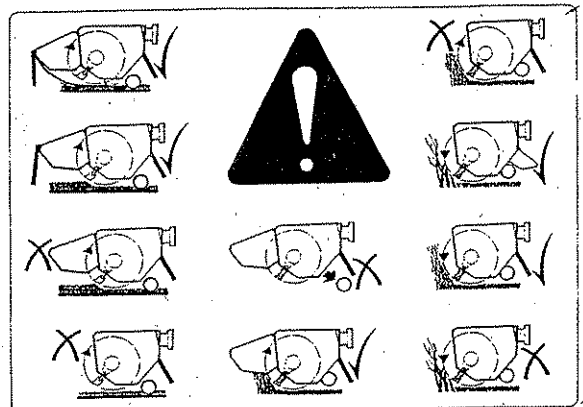
CUTTING BLADES THROWN OBJECTS

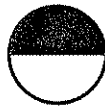


KEEP AWAY - ROTATING BLADES

SERIOUS INJURY OR DEATH CAN RESULT FROM THROWN OBJECTS OR BLADE CONTACT.

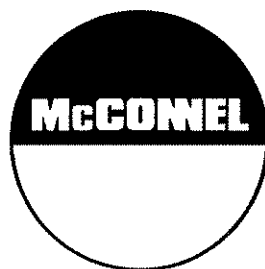
- ✓ STOP MOWING IF PERSONS ARE NOT CLEAR OF THROWN OBJECTS
- ✓ DO NOT STAND ON OR NEAR MACHINE WHEN IN OPERATION
- ✓ DO NOT OPERATE WITH DEFLECTORS OR GUARDS REMOVED





McCONNEL

Ref	Part No.	Qty	Description
			STICKERS
1	12 90 255	1	McConnel
2	12 90 462	1	Flail head instructions
3	12 90 341	1	Flail head guarding
4	0075 6485	1	Rotating blade warning
5	12 90 392	1	Use McConnell spares
6	12 90 478	1	Belt pulley alignment
7	12 90 065	1	Belt tension



McConnel Limited, Temeside Works, Ludlow, Shropshire SY8 1JL. England.
Telephone: 01584 873131. Facsimile: 01584 876463. www.mcconnel.com