

# LAMIERS **ONE SAW 700**



## **TRANSLATION OF THE SPARE PART MANUAL**

# REMINDER

**For any maintenance work on the Saw Head, it is essential to contact your dealer.**

For optimum performance, use only COUP'ECO spare parts in order to benefit from the latest refinements.

Buy your original COUP'ECO parts from your local dealer.

Always state the type of machine, its serial number and the reference number of the part.

Improvements made by the company may have modified some of the parts listed in the present manual. The most recent part will always be supplied if it is interchangeable with the previous model.

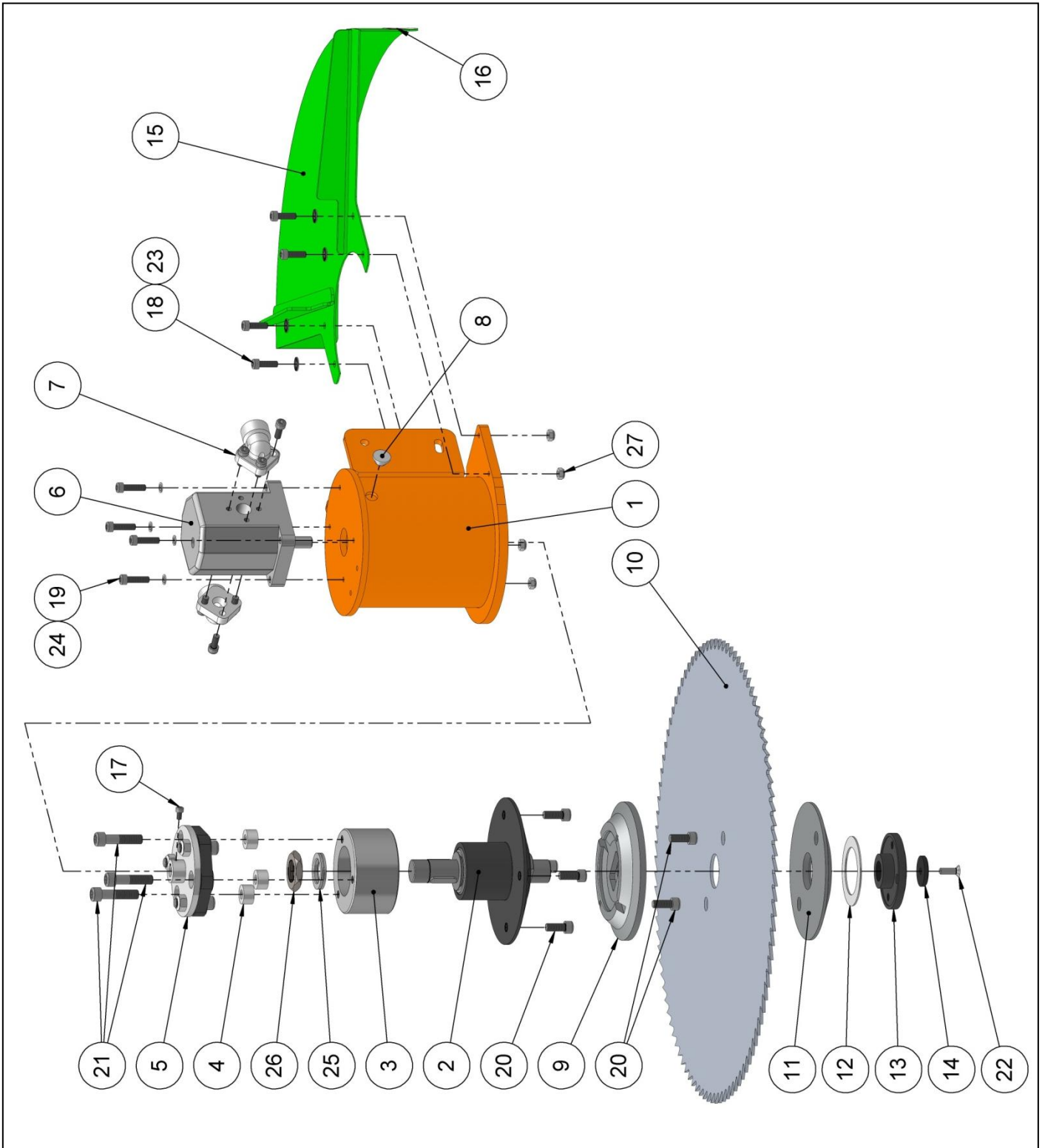
Do not hesitate to contact us for any information, as well as for special designs or products.

# Contents

- Spare parts of the Cutter bar 1700.....3
- Bearing assembly .....5
- Coupling assembly.....6
- Tooling – Mounting / Unmounting blades.....7
- Flail blades assembly on a single plate.....8
- Flail blades assembly on reinforced stamped plate .....9
- Safety adhesives.....10
- Flow rate regulator (opcional) .....11

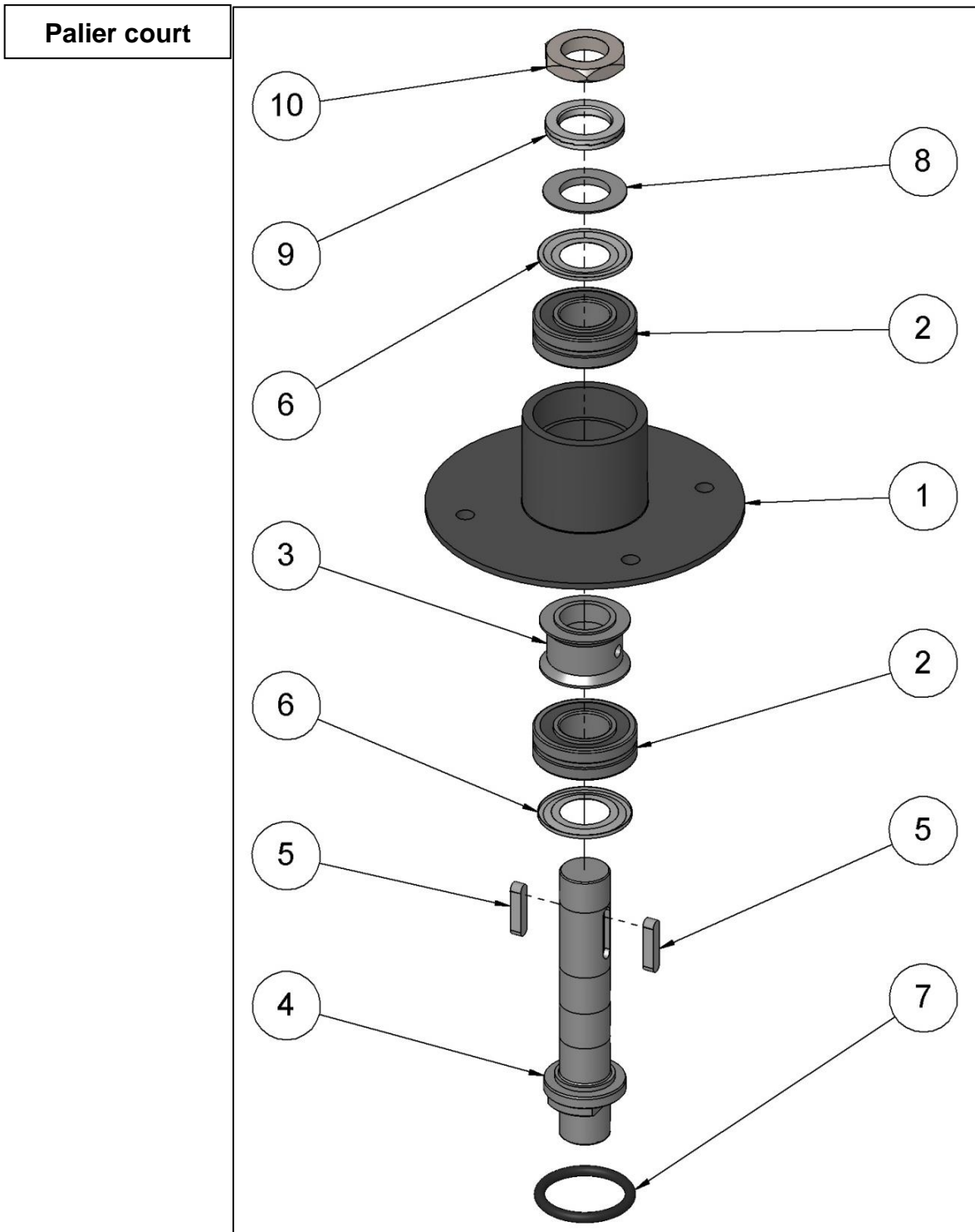
• Spare parts of the Cutter bar 1700

Rep	Reference	Description	Qty
1	TC.601.01.120	Bare case	1
2	30.610.705C	Palier court	1
3	TC.600.130	Drive spacer	1
4	30.610.553	Coupling spacer	3
5	-	Complete coupling	1
6	21.620.805	Engine 17cm <sup>3</sup>	
	21.620.807	Engine 22cm <sup>3</sup>	1
7	21.640.510	Flange 3/4"	2
8	GPN.900.165	Cap	1
9	30.610.303	Short offset counter flange	1
10	35.600.622	Saw Ø700 mm 140 teeth	1
11	30.200.504	Clamping flange	1
12	21.653.504	Permaglide washer	1
13	30.100.703	Lock nut	1
14	21.040.050	Stop washer	1
15	TC.600.02.200	Rear protective casing	1
16	25.500.002	White/Red sticker	1
17	21.075.601	Allen screw M 6 x 10	1
18	21.075.702	Allen screw M 8 x 25	4
19	21.075.703	Allen screw M 8 x 30	4
20	21.075.803	Allen screw M 10 x 25	6
21	21.075.207	Allen screw M 12 x 50	3
22	21.080.702	Hex socket countersunk screw 8x25	1
23	21.036.529	Contact washer Ø8	4
24	21.031.502	Flat washer grower Ø8	4
25	21.046.501	Flat washer Nord-Lock NL30	1
26	21.029.102	Thin nut H M30x150 Ht. 9mm ZBJ	1
27	21.026.504	Locknut H M8	4
-	TC.700.01.500	Saws protective casing (not show)	1
-	13.000.100	Bungee cord (not show)	2
	01.700.020	Square tube support 70x70	
	TC.601.01.300	Square tube support 100x100	



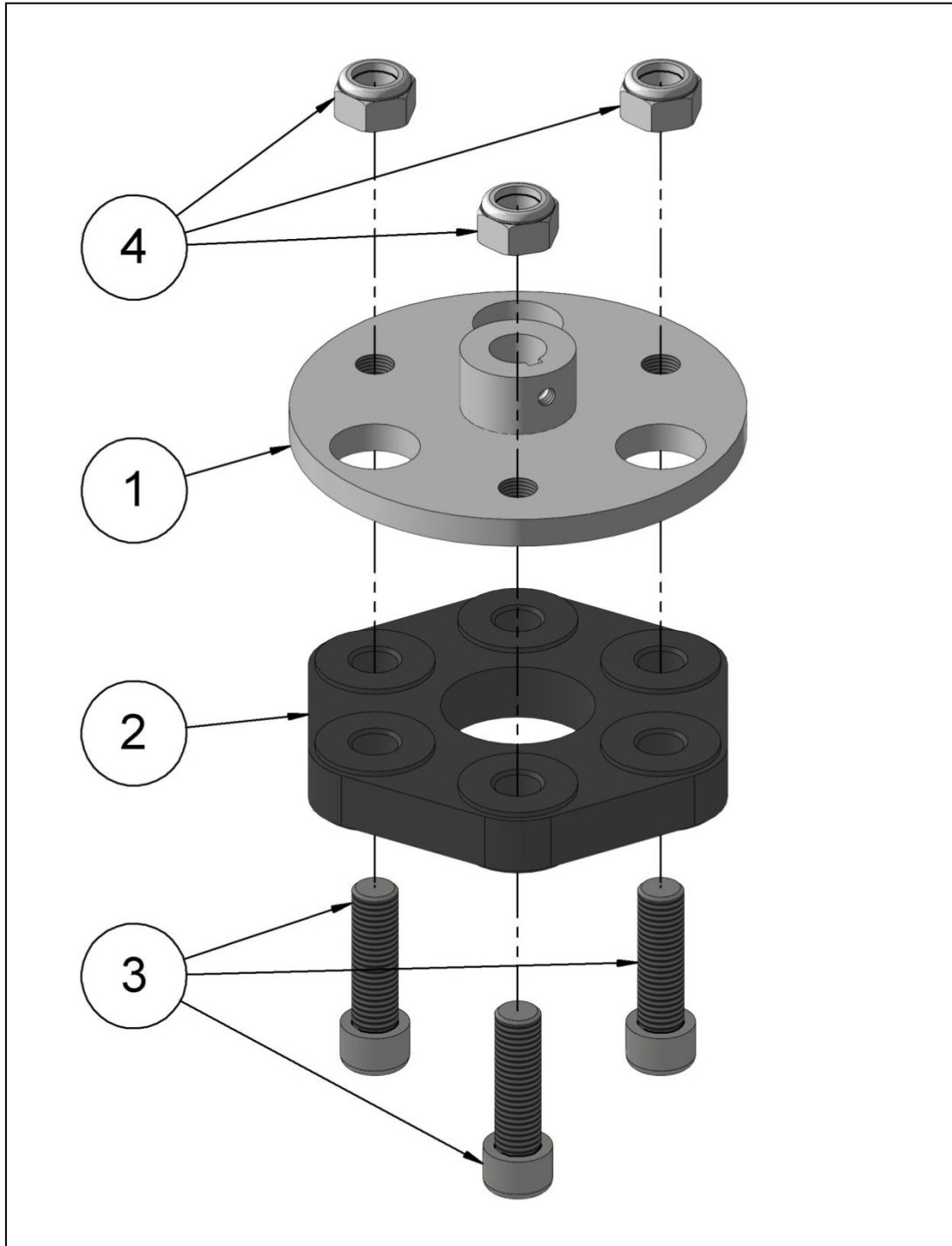
• **Bearing assembly**

Rep	Reference	Description	Qty
1	30.610.103.02	Bearing box	1
2	21.675.601	Bearing 22206 EAW33	2
3	30.100.504	Lubrication spacer	1
4	30.610.705.02	Short shaft	1
5	21.650.502	Key 8 x 7 x 35	2
6	21.675.004	Nilos seal	2
7	20.581.607	Lip seal	1
8	30.100.505	Pulley spacer - 5 mm	1
9	21.046.501	Flat washer Nord-Lock NL30	1
10	21.029.102	Thin nut H M30x150 – thickness 9 mm	1



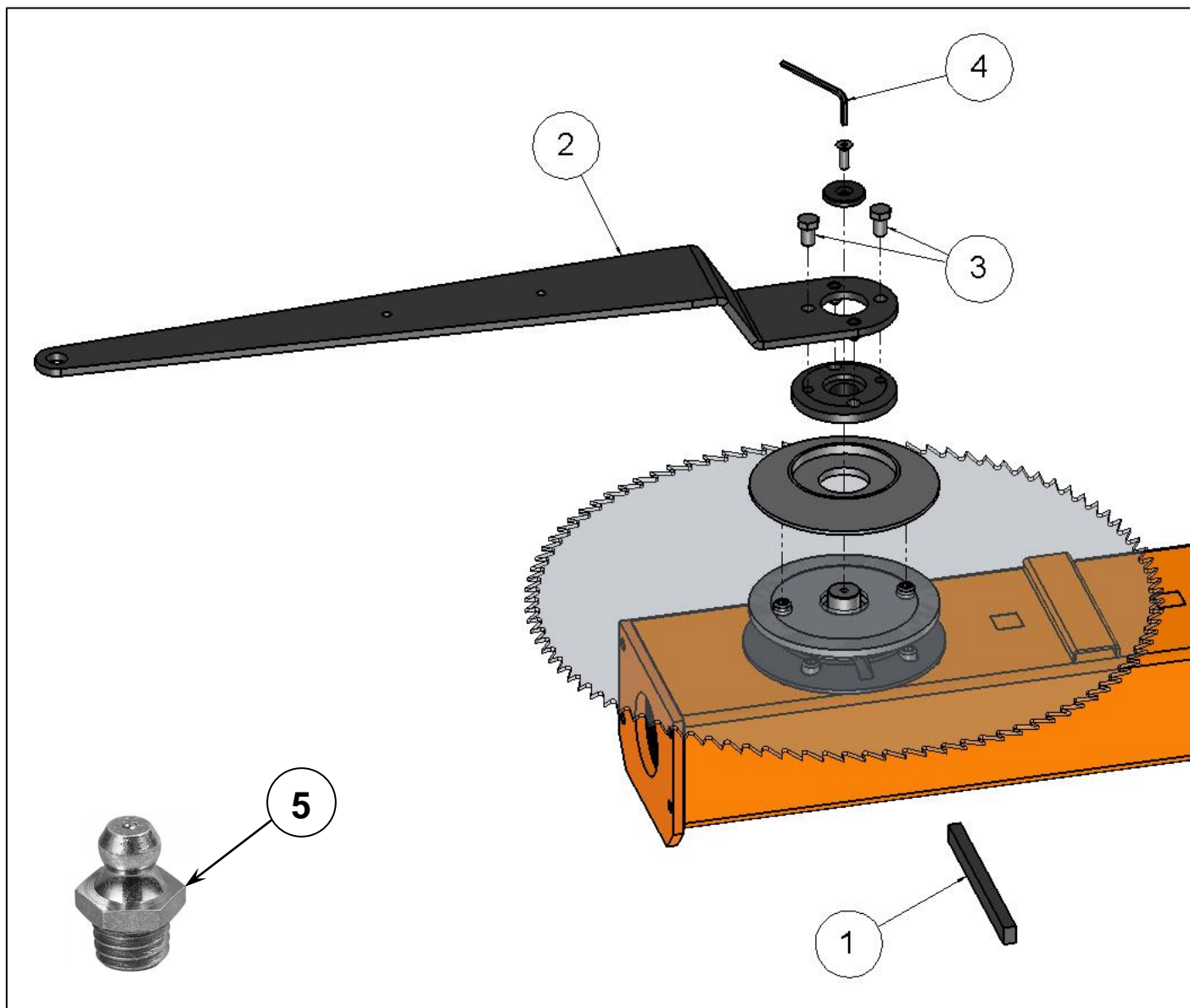
## • Coupling assembly

Rep	Reference	Description	Qty
1	30.510.210	Coupling half	1
2	21.667.503	Bushing	1
3	21.075.103	Allen screw M 12 x 40	3
4	21.026.506	Locknut H M12	3



• Tooling – Mounting / Unmounting blades

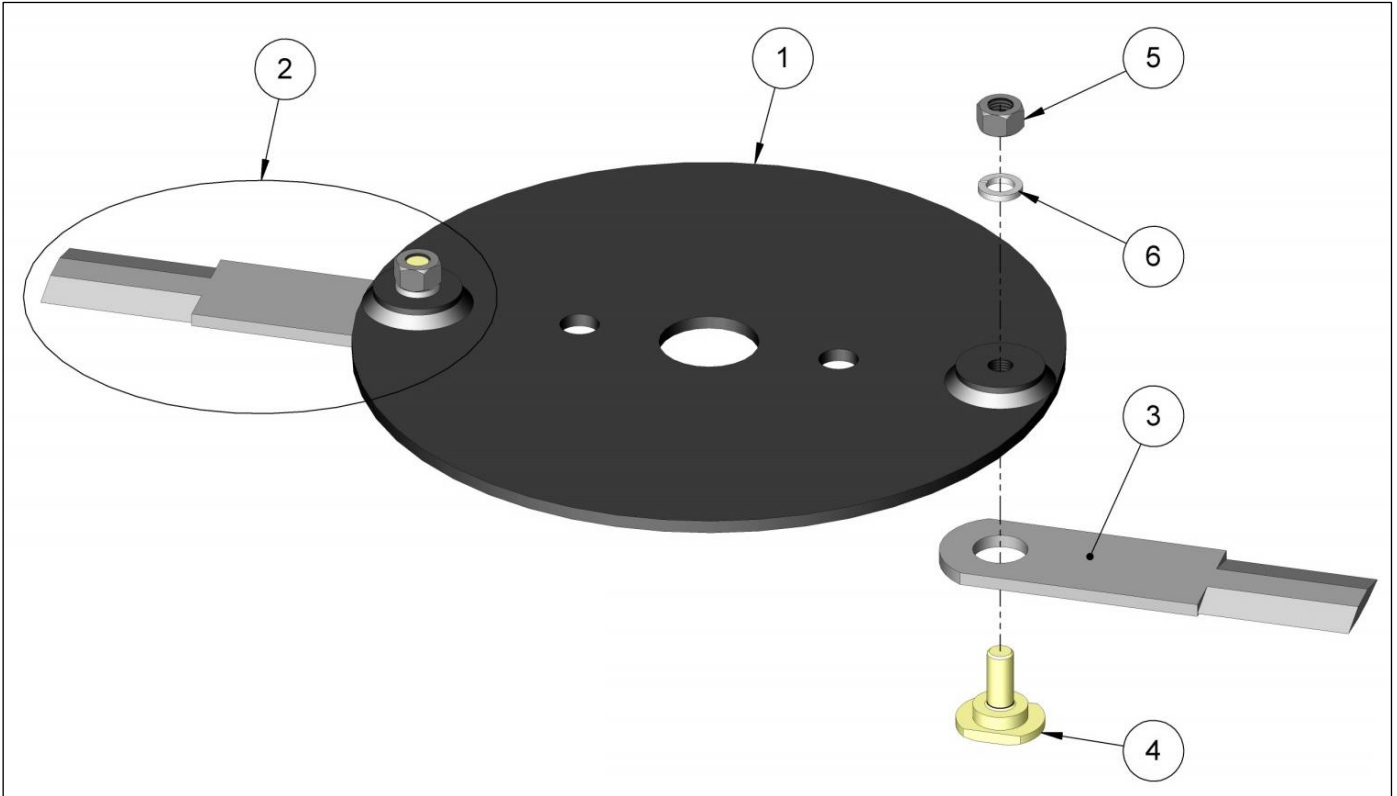
Item	Reference	Description	Qty
1	TH.440.918	Tightening wrench	1
2	30.510.222	Holding wrench	1
3	21.075.700	M 8 x 16 Allen screw	2
4	30.700.750	5 Allen wrench	1





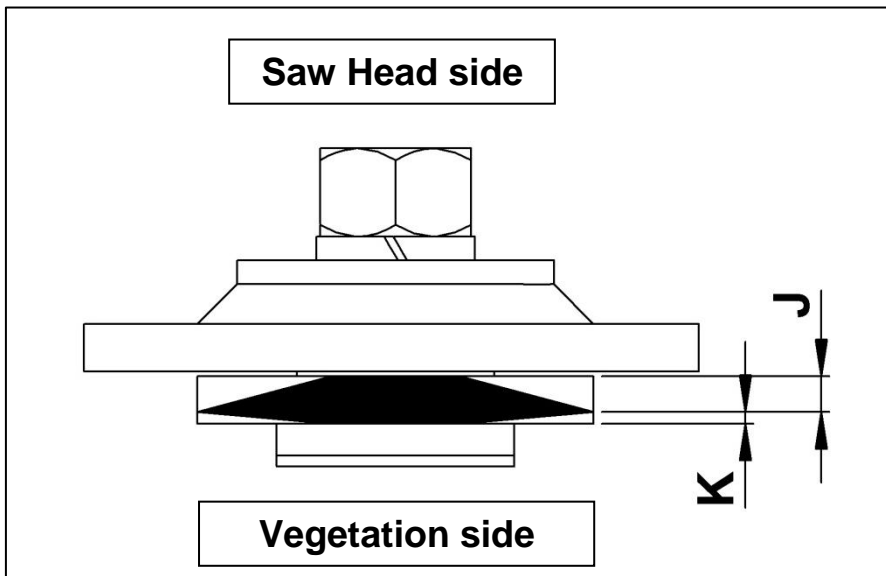
• **Flail blades assembly on a single plate**

Item	Reference	Description	Qty
-	30.510.250	Complete flail blade	1
1	30.510.225	Unequipped single disc	1
2	30.702.451	Kit of 2 knives with bolts	1
3	-	Dual sided, dual angle blade	2
4	-	Blade bolt	2
5	-	Hex head UNF 1/2" HU 20 ZBJ nut	2
6	-	Grower washer, 1/2"	2



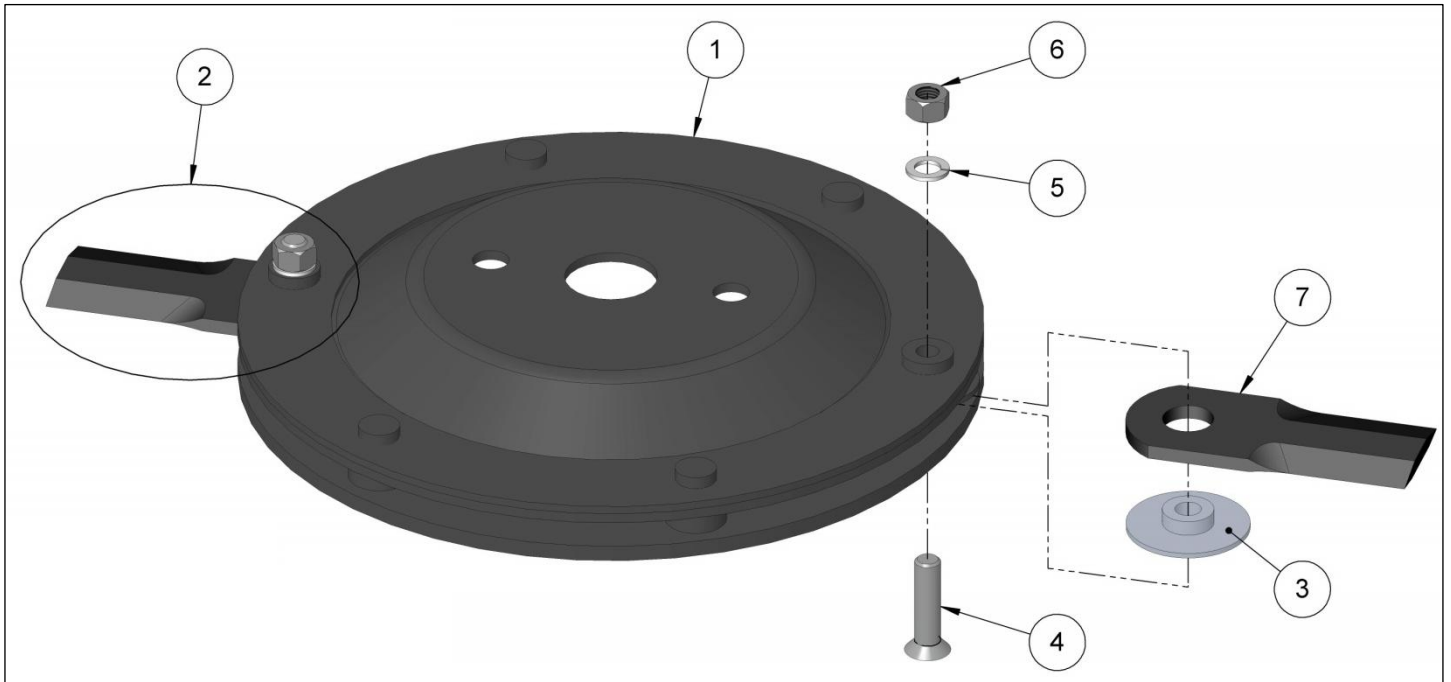
**Cutting blade mounting direction :**

The small groove (**K**) must be mounted on the vegetation side. If there is no dual angle, the large angle side (**J**) will always be mounted on the saw head side.



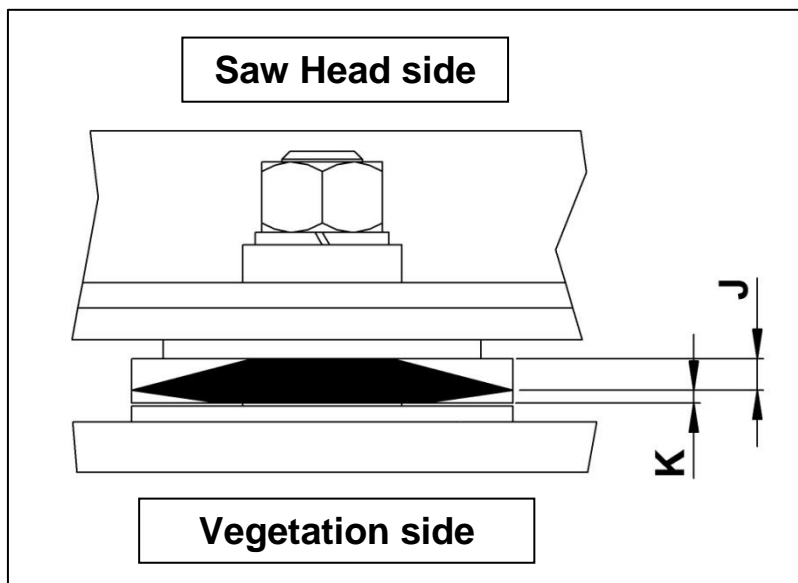
• **Flail blades assembly on reinforced stamped plate**

Item	Reference	Description	Qty
-	14.500.704	Reinforced knives blade equipped with 2 knives and bolts	1
1	14.500.702	Bare reinforced stamped plate	1
2	30.702.453	Kit of 2 knives with bolts	1
3	-	Shoulder washer	2
4	-	FHC UNF 1/2" screw	2
5	-	Grower washer, 1/2"	2
6	-	Hex head UNF 1/2" HU 20 ZBJ nut	2
7	-	Dual sided, dual angle blade	2



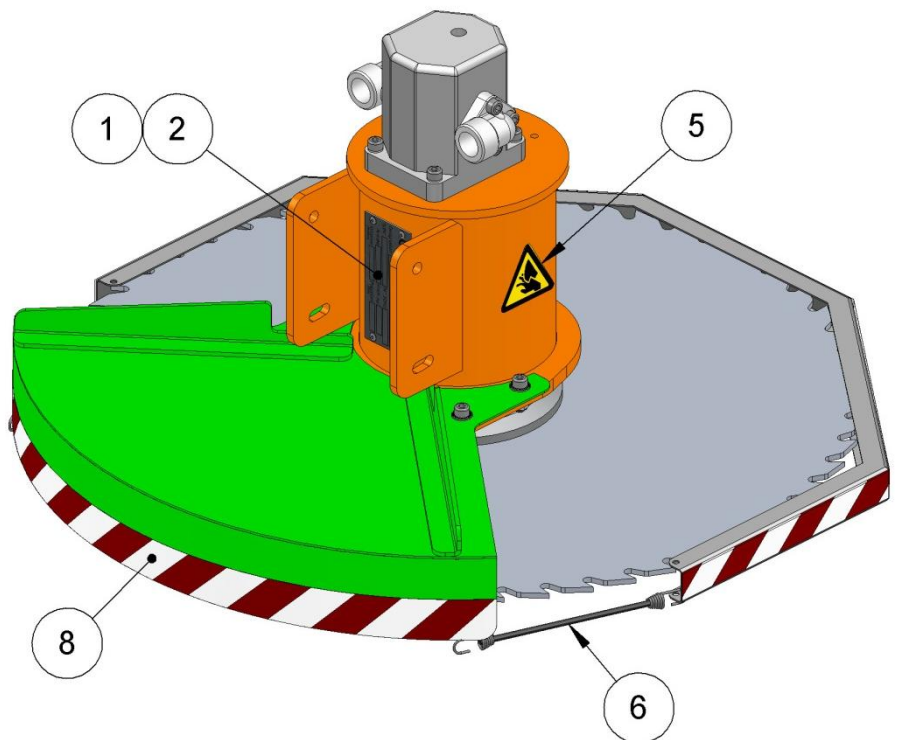
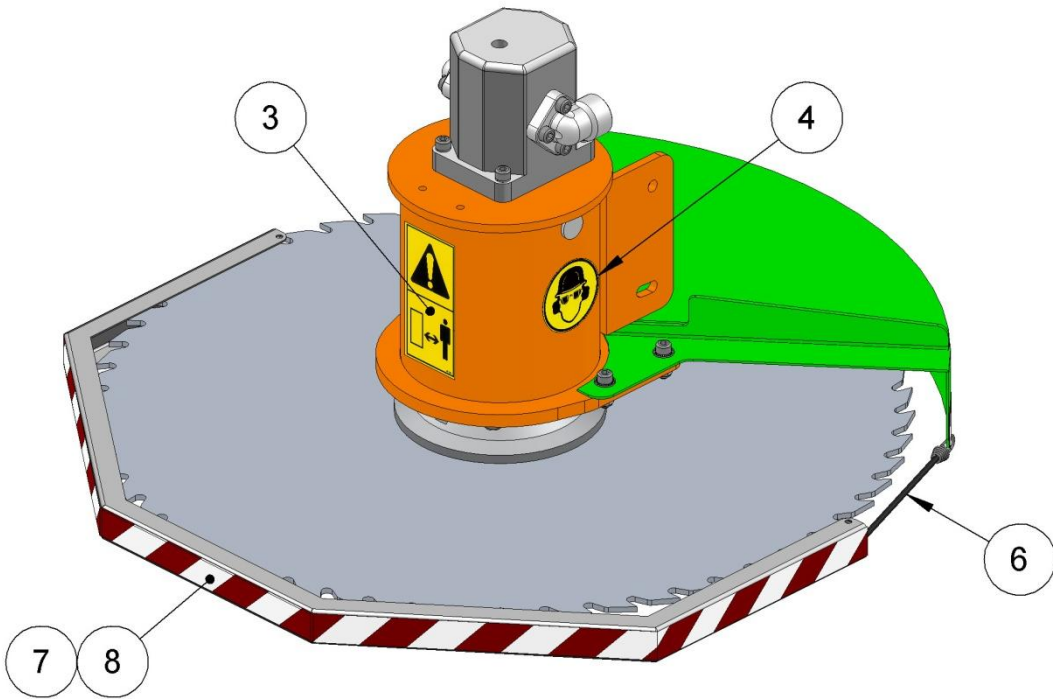
**Cutting blade mounting direction:**

The small groove (K) must be mounted on the vegetation side. If there is no dual angle, the large angle side (J) will always be mounted on the saw head side.



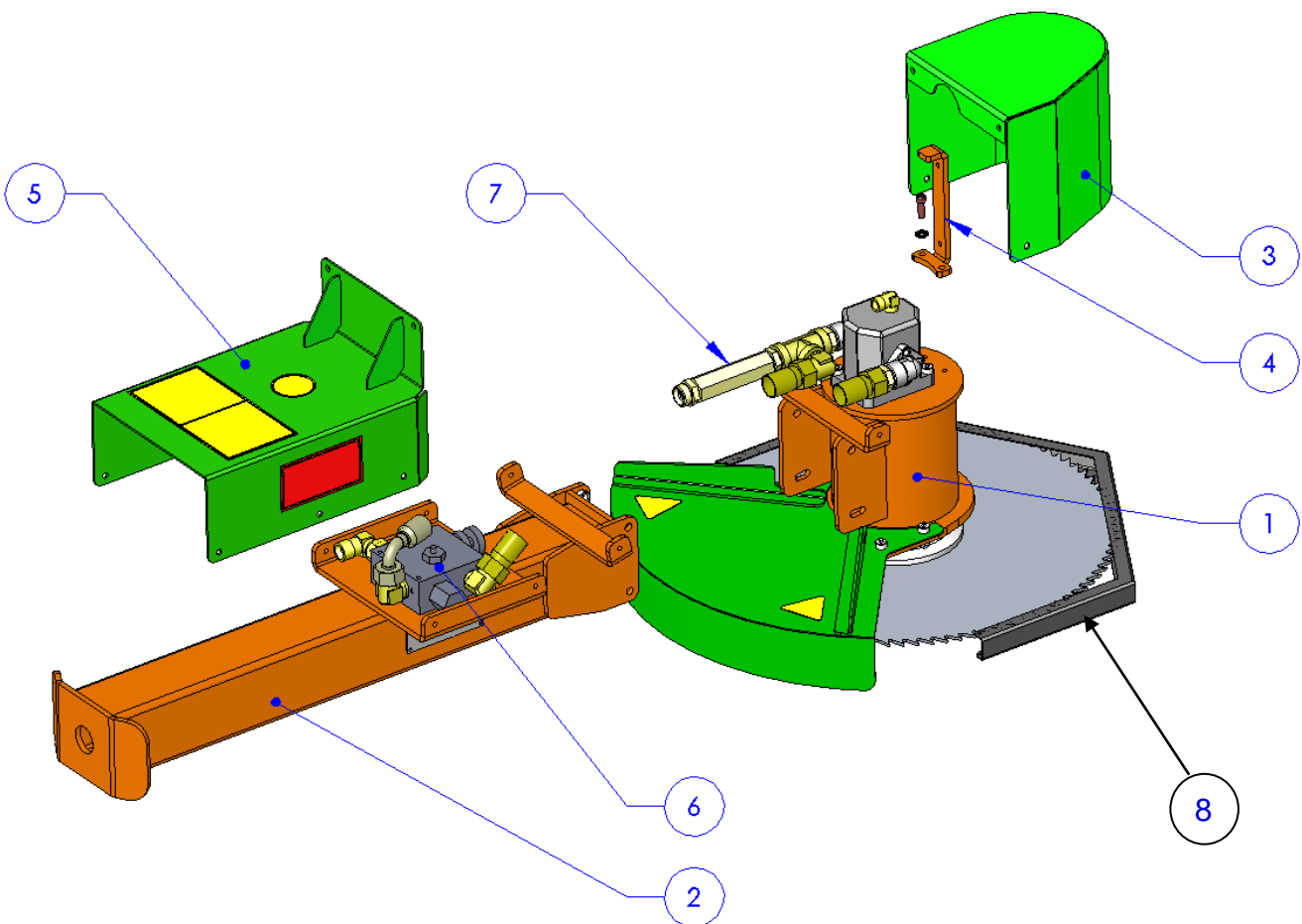
• **Safety adhesives**

Rep	Reference	Description	Qty
1	21.087.412	Ø4x12 pop rivet	4
2	25.550.102	European ratings plate	1
3	25.550.035	Safety label - Cutting tool	1
4	25.550.017	Safety label - Protection for head, eyes and ears	1
5	25.550.029	Safety label - Cutting/amputation hazard	1
6	13.000.100	Bungee cord	2
7	TC.700.01.C01	Saw protective casing	1
8	25.500.002	White/red stickers	1



- Flow rate regulator (opcional)

REFERENCE	DESCRIPTION	REPERE	QTY
	<b>General parts list</b>		
	Saw head	1	1
TC.601.01.400	Square tube 100x100 for flow regulator	2	1
TC.601.01.500	Protective casing for the engine	3	1
TC.601.01.107	Support for the engine casing	4	1
TC.601.01.405	Protective casing for the flow regulator	5	1
20.560.107	Flow regulator	6	1
20.541.011	Free wheel	7	1
TC.600.01.C01	Saw protective casing	8	1











**COUP'ECO S.A.  
Z.I. du Chail  
17800 PONS  
FRANCE**

**Tél. +33 (0)5.46.96.25.50  
Fax : +33 (0)5.46.94.64.72  
[coupeco@coupeco.com](mailto:coupeco@coupeco.com)**

**S.A. au capital de 100 000 €  
R.C.S. SAINTES B 401 895 883  
SIRET 401 895 883 00023  
Code A.P.E. 285 D**

**[www.coupeco.com](http://www.coupeco.com)**