

# Agrimaster

marchio di DEMETRA S.p.A.

TRINCIATRICI - ATOMIZZATORI  
ELEVATORI A FORCHE  
DECESPUGLIATRICI  
A BRACCIO IDRAULICO

DEMETRA S.p.A.  
Via Nobili 44 - 40062 MOLINELLA (BO) ITALY  
Tel. (051) 882701 - Fax (051) 882542  
e-mail: [commerciale@agrimaster.eu](mailto:commerciale@agrimaster.eu)  
[www.agrimaster.eu](http://www.agrimaster.eu)

3



CATALOGO PARTI DI RICAMBIO  
SPARE PARTS CATALOGUE  
CATALOGUE PIECES DE RECHANGE  
ERSATZTEILLISTE  
CATÁLOGO PARTES DE REQUESTO

# WL 125•150



## per ordinare i pezzi di ricambio

Per una corretta ordinazione dei pezzi di ricambio è necessario indicare i seguenti elementi:

- 1) Modello della macchina,
  - 2) Numero di catalogo,
  - 3) Codice del ricambio,
  - 4) Quantità richiesta.
- 

## pour commander les pièces de rechange

Pour commander les pièces de rechange il faut indiquer:

- 1) Modèle de la machine,
  - 2) Nombre du catalogue,
  - 3) Code de la pièce de rechange,
  - 4) Quantité demandé.
- 

## to order the spare parts

To order the spare parts correctly you must specify:

- 1) Model of the machine,
  - 2) Catalogue number,
  - 3) Spare part code number,
  - 4) Required quantity.
- 

## um die Ersatzteile zu bestellen

Für eine korrekte Bestellung der Ersatzteilen müssen die folgende Einzelheiten angegeben werden:

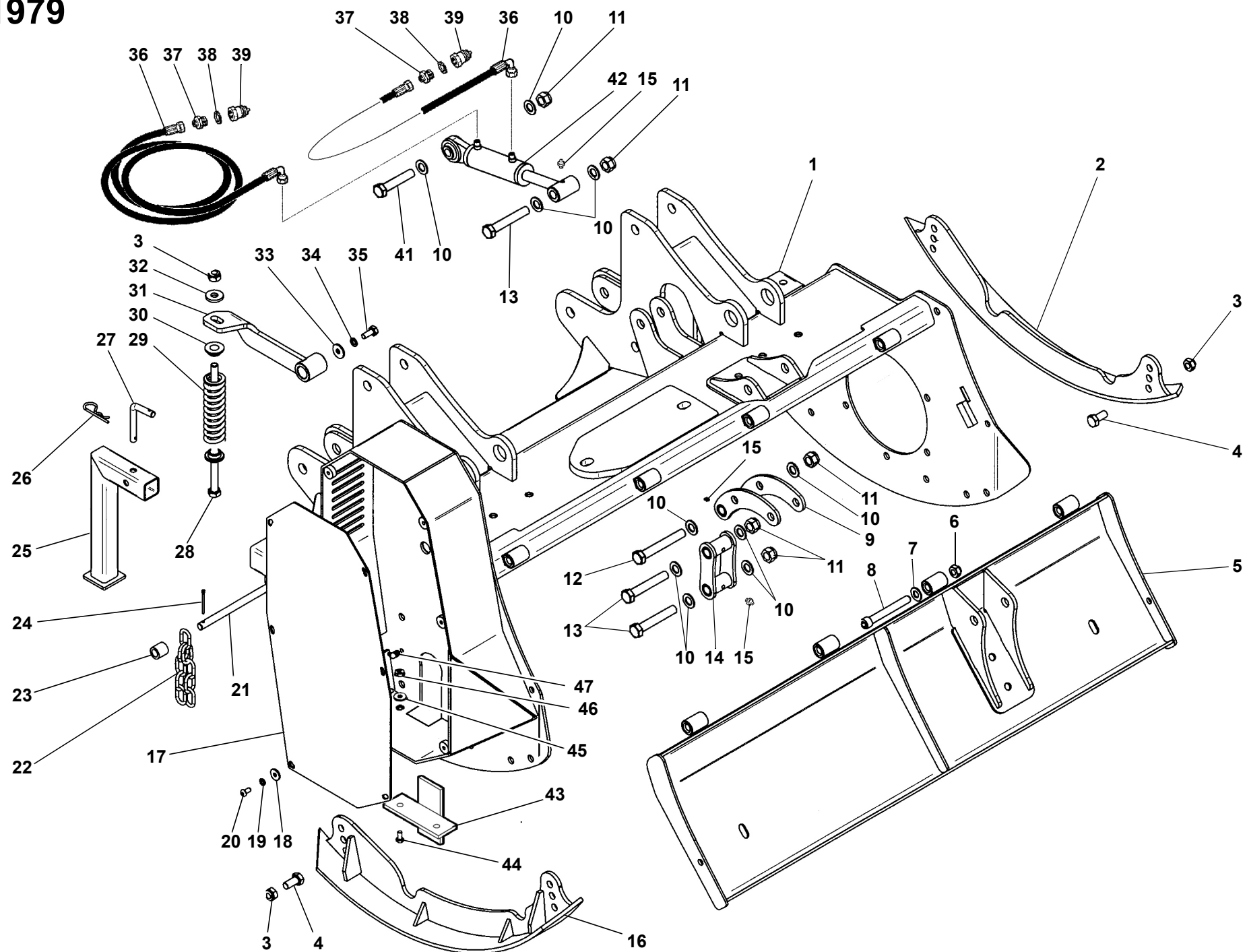
- 1) Gerät-Modell,
  - 2) Katalog-Nummer,
  - 3) Teil-Nummer,
  - 4) Gewünschte Menge.
- 

## para pedir las partes de requesto

Para pedir correctamente las partes de requesto se tiene que especificar:

- 1) Modelo de la máquina,
- 2) Número de catálogo,
- 3) Código de la parte de requesto,
- 4) Cantidad pedida.

# TAV. 1979



# TAV. 1979

RIF.	CODICE	DESCRIZIONE	N.
1	3015960	WL 125	1
	3016211	WL 150	1
2	3015995	Sx	1
3	1012414	M14 UNI7474	5
4	1111412	M14x35 UNI5739	4
5	3015982	WL 125	1
	3016216	WL 150	1
6	1012414	M14 UNI7474	4
7	1114000	ø14	4
8	1121442	M14x110 UNI5931	4
9	3008111		1
10	1120000	ø20 UNI6592	10
11	1012420		5
12	1102054	M20x140 UNI5737	1
13	1102046	M20x120 UNI5737	3
14	3008112		2
15	0002654	M10x1	4
16	3015992	Dx	1
17	3016006		1
18	1309243	ø 8x24x3 UNI6593	6
19	1508150	ø8 UNI6798A	6
20	1190804	M8x16 UNI7380	6
21	3000315	WL 125	1
	3000316	WL 150	1
22	3007650	WL125	38
	3007650	WL150	45

RIF.	CODICE	DESCRIZIONE	N.
23	3011497		36
	3011497		44
24	1559028	ø4,5x45 UNI1336	1
25	3000938		1
26	0002115	ø4	1
27	3000088		1
28	3004948		1
29	3004156		1
30	3001093		2
31	3008277		1
32	3001118		1
33	1410304	10,5x30x4	1
34	1210000	ø10	1
35	1111008	M10x25 UNI5739	1
36	0002632		2
37	0002300	1/2" - 1/4"	2
38	0002006	1/2"	2
39	3005472		2
41	1102034	M20x90 UNI5737	1
42	3008107		1
43	3011830		1
44	1111010	M10x30 UNI5737	2
45	1310303	ø10x30x3	4
46	1012410	M10 UNI7474	2
47	0002661	M10x1x90°	1

RIF.	CODICE	DESCRIZIONE	N.

This diagram shows an exploded view of a mechanical assembly. The main components are labeled with numbers 1 through 18. Part 1 is a large, complex metal housing or frame. Part 2 is a long, thin metal rod or shaft. Part 3 is a small, cylindrical component. Part 4 is a small, rectangular component. Part 5 is a small, L-shaped metal bracket. Part 6 is a small, L-shaped metal bracket. Part 7 is a small, L-shaped metal bracket. Part 8 is a small, circular component. Part 9 is a small, cylindrical component. Part 10 is a small, cylindrical component. Part 11 is a small, cylindrical component. Part 12 is a small, cylindrical component. Part 13 is a small, cylindrical component. Part 14 is a large, curved metal arm or lever. Part 15 is a small, cylindrical component. Part 16 is a small, cylindrical component. Part 17 is a small, cylindrical component. Part 18 is a small, cylindrical component. A large curved arrow indicates the direction of movement for part 14.

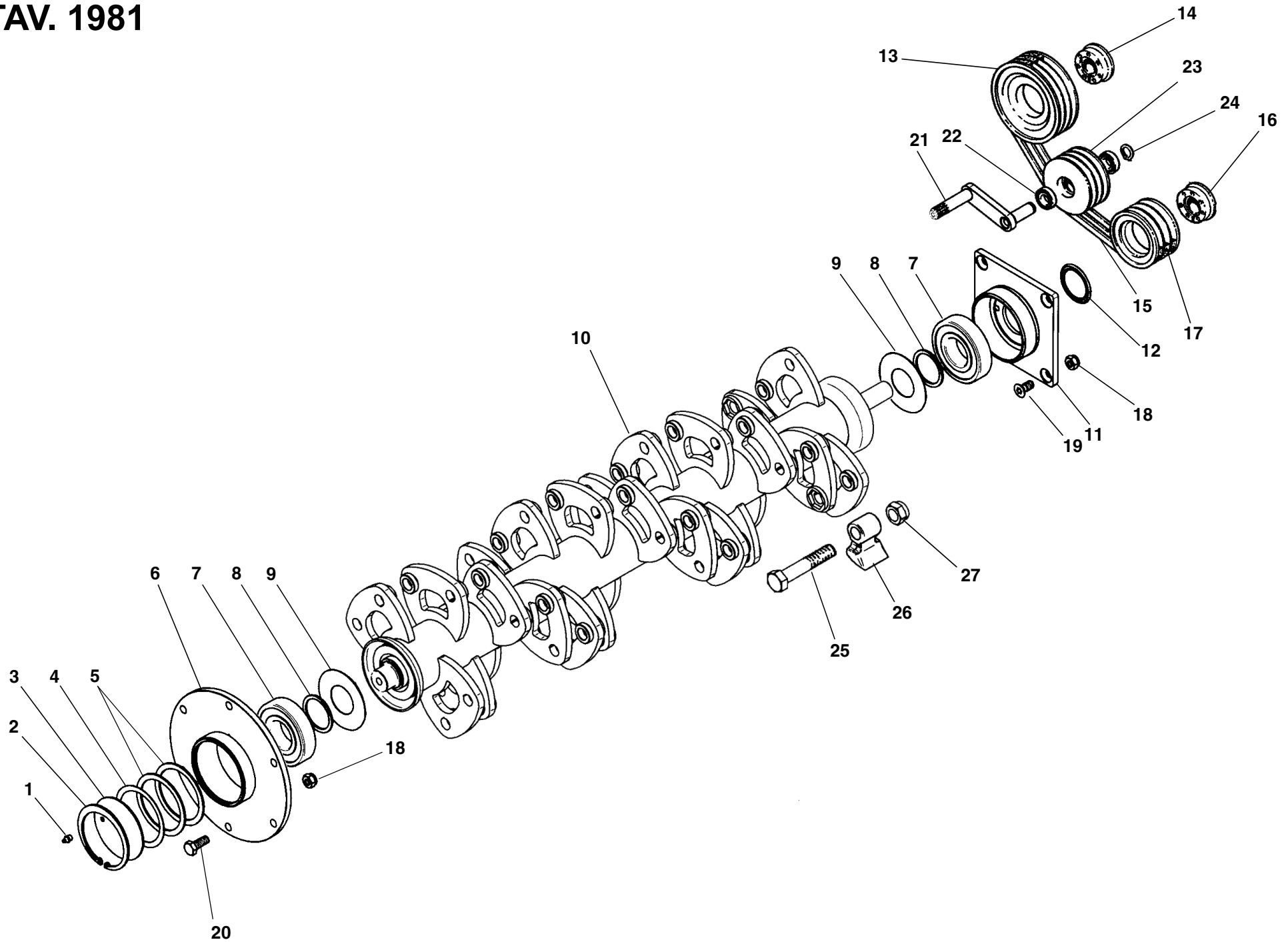
# TAV.1980

RIF.	CODICE	DESCRIZIONE	N.
1	3016226		2
2	1012414	M14 UNI7474	4
3	3001118	ø14,5x35x5	8
4	1111414	M14x40 UNI5739	4
5	0002116	ø5	3
6	3016007		2
7	3000447		1
8	0001715	OR 4093-131	2
9	3005472	1/2"	2
10	1021518	M18x1,5 UNI5589	2
11	1012420	M20 UNI7474	4
12	1120000	ø20 UNI6592	8
13	1102058	M20x150 UNI5737	4
14	3015996		1
15	0002143		2
16	1112000	ø12	2
17	1212000	ø12	2
18	1012412	M12 UNI7474	2

RIF.	CODICE	DESCRIZIONE	N.

RIF.	CODICE	DESCRIZIONE	N.

# TAV. 1981



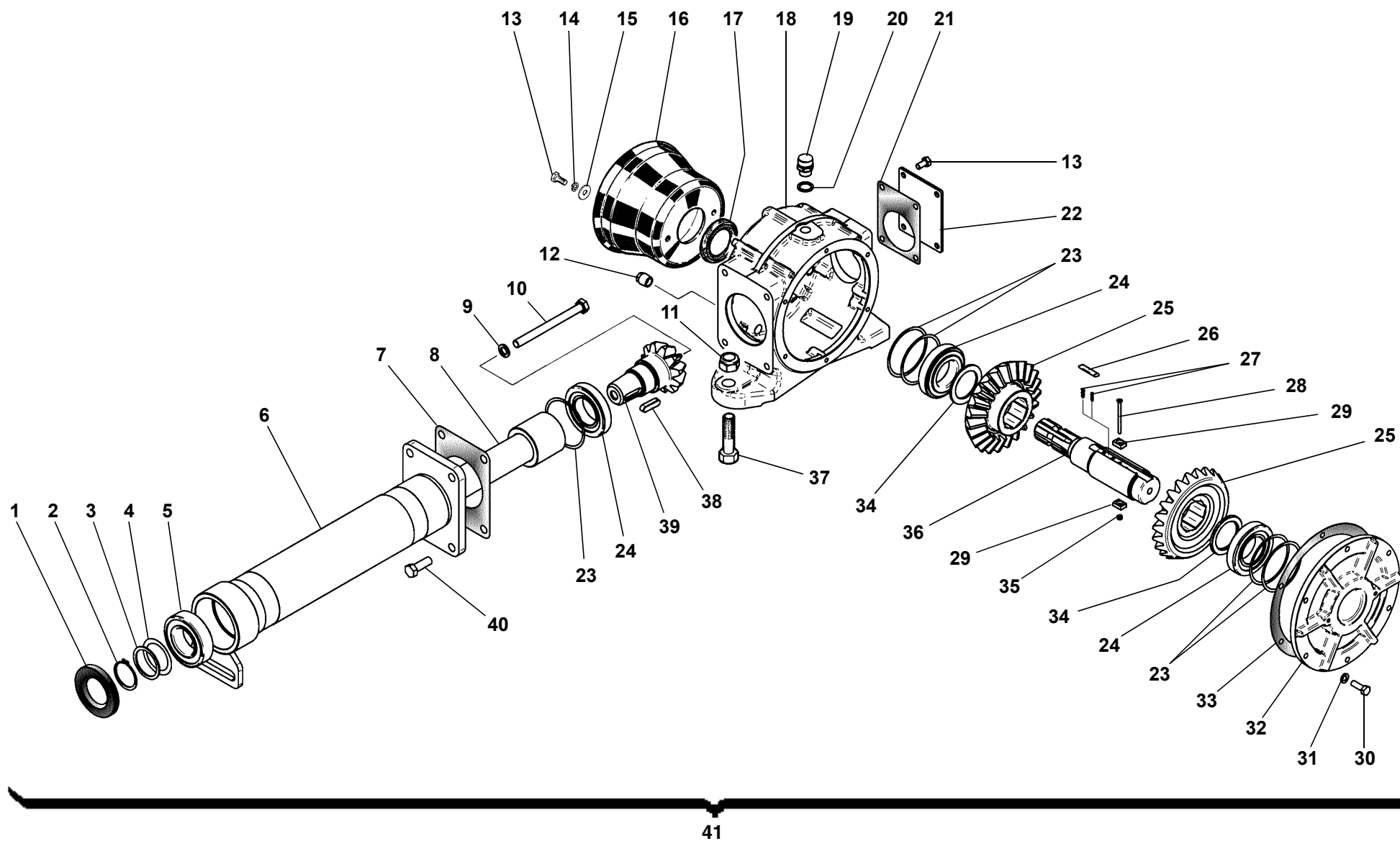
# TAV. 1981

RIF.	CODICE	DESCRIZIONE	N.
1	0002654	M10x1	1
2	1020120	Seeger I 120 UNI7437	1
3	3003067		1
4	3004403		1
5	3001936		2
6	3010109		1
7	0001400	1311	2
8	3000640		2
9	3000346		2
10	3010125	WL 125	1
	3012090	WL 150	1
11	3010108		1
12	0001821	A-NBR 55x75x5,5	1
13	3000103	250x4 SPB	1
14	0001332	45x80	1
15	0001016	SPB-X 1400	4
16	0001333	35x80	1
17	3000379	130x4 SPB	1
18	1012414	M14 UNI7474	10
19	1181410	M14x30 UNI5933	4
20	1111412	M14x35 UNI5739	6
21	3016005		1
22	0001496	6205 2RS	2
23	3007646		1
24	1010025	Seeger E25 UNI7435	1
25	3008958	M24x135 10.9 WL 125	24
	3008958	M24x135 10.9 WL 150	30

RIF.	CODICE	DESCRIZIONE	N.
26	3008045	WL 125	24
	3008045	WL 150	30
27	1012424	M24 UNI7474 WL 125	24
	1012424	M24 UNI7474 WL 150	30
		Aandrijving voor 1000 toeren: 3010374 Poelie 170 x 4 3000102 Poelie 160 x 4 0001006 V-snaar XPB 1320 4 x	

RIF.	CODICE	DESCRIZIONE	N.

# TAV. 1982



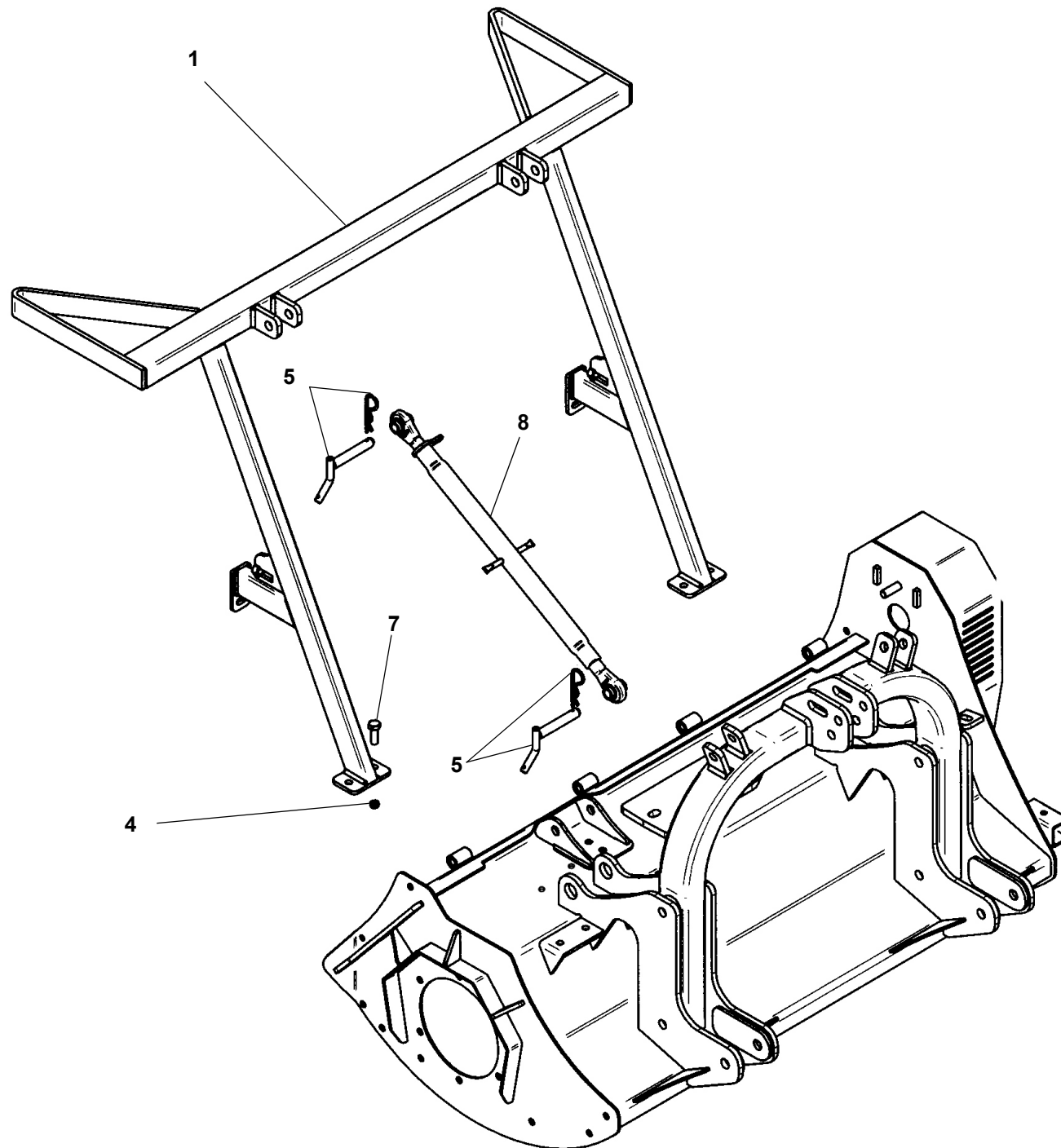
# TAV. 1982

RIF.	CODICE	DESCRIZIONE	N.
1	0001800	45x85x10	1
2	1010045	Seeger E 45 UNI7435	1
3	3002681	45,2x55x2	—
4	3004422	46x61x0,25	—
	3001949	46x61x0,5	—
5	0001475	6209	1
6	3000002	WL 125	1
	3000003	WL 150	1
7	3000108		—
8	3000006	WL 125	1
	3000007	WL 150	1
9	1212000	ø12 UNI1751	1
10	1101254	M12x140 UNI5737	1
11	1012418	M18 UNI7474	2
12	0002663	M18x1,5	2
13	1110804	M8x16 UNI5739	2
14	1208000	ø8 UNI1751	2
15	1309243	ø8x24x3 UNI6593	2
16	0003422		1
17	0001801	45x65x10	1
18	3000001		1
19	0002679	M18x1,5	1
20	0002031		1
21	3000204		1
22	3000095		1
23	3001040	75,5x84x0,15	—
	3004458	75x84x0,25	—

RIF.	CODICE	DESCRIZIONE	N.
	3004480	75,5x84x0,4	—
	3001040	75,5x84x0,5	—
24	0001402	30209	3
25	3007700		2
26	3006959		4
27	0006142		8
28	11205222	M5x60 UNI5931 12.9	1
29	3009283		2
30	1110808	M8x25 UNI5739	6
31	1508150	ø8 UNI6798A	6
32	3000000		1
33	3000206		—
34	0001503	47x65x4	2
35	1012405	M5 UNI7474	1
36	3006740		1
37	1101828	M18x75 UNI5735	2
38	1552073	10x8x35 UNI6604	1
39	3002007		1
40	1111212	M12x35 UNI5739	4
41	3015999		1

RIF.	CODICE	DESCRIZIONE	N.
			—
			—
			—
			—

TAV. 1984



# TAV. 1984

RIF.	CODICE	DESCRIZIONE	N.
1	3016002	WL 125	1
	3016223	WL 150	1
2	1111618	M16x50 UNI5739	2
3	1012516	M16 UNI5588	2
4	1012414	M14 UNI7474	4
5	3000447	ø19	4
6	0002116	ø5	4
7	1111414	M14x40 UNI5739	4
8	0003738		2

RIF.	CODICE	DESCRIZIONE	N.

RIF.	CODICE	DESCRIZIONE	N.

