



For best performance ...

USE ONLY GENUINE McCONNEL SERVICE PARTS

*To be assured of the latest design improvements purchase your
'Genuine Replacements' from the 'Original Equipment Manufacturer'*

McCONNEL LIMITED

Through your local Dealer or Stockist

Always quote:

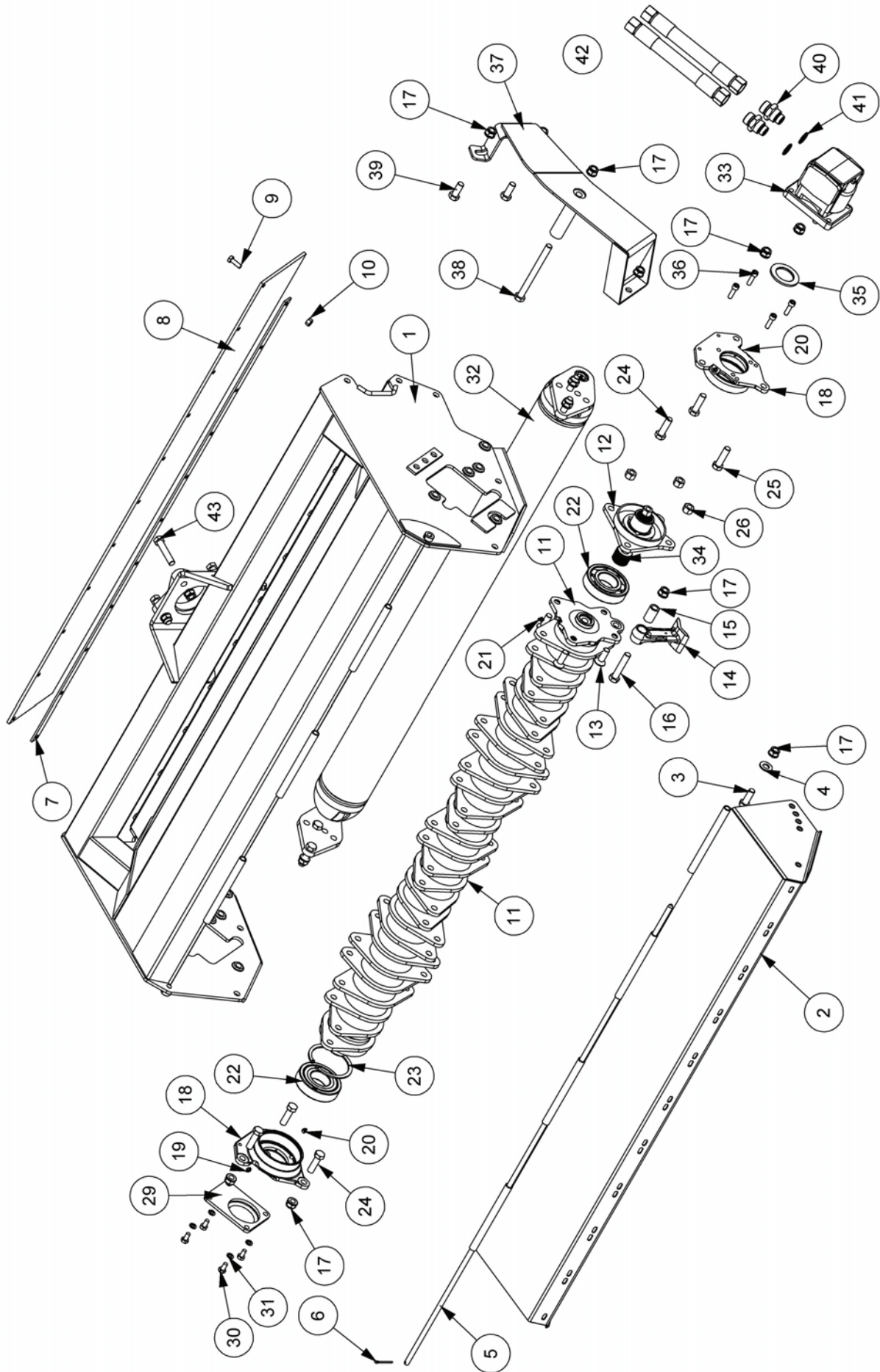
- ***Machine Type***
- ***Serial Number***
- ***Part Number***

*Design improvements may alter some of the parts listed in this manual –
the latest part will always be supplied when it is interchangeable with an earlier one.*

1.5M TUFFCUT FLAILHEAD ASSEMBLY

Module(s): 7377755, 7377858

McCONEL



1.5M TUFFCUT FLAILHEAD ASSEMBLY

McCONNEL

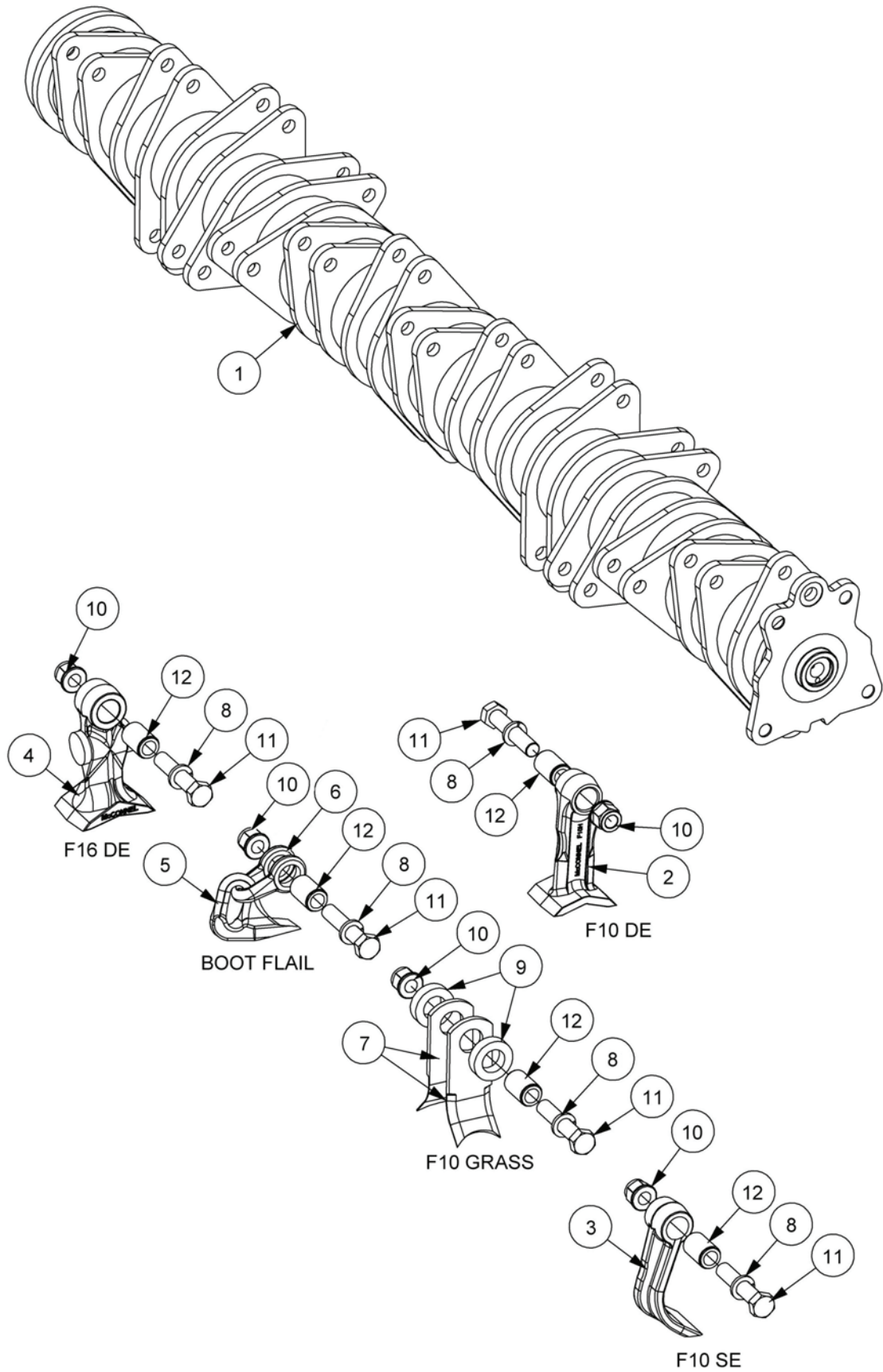
Module(s): 7377755, 7377858

REF.	QTY.	PART No.	DESCRIPTION
		7377755	1.5M TUFFCUT FLAILHEAD ASSEMBLY - 54HP
		7377858	1.5M TUFFCUT FLAILHEAD ASSEMBLY - 65HP
1	1	42427.01	1.5M CASING
2	1	42431.02	FRONT HOOD
3	2	9200028	BOLT
4	2	0100106	FLAT WASHER
5	1	41293.03	HOOD PIVOT PIN
6	1	9501406	SPLIT PIN
7	1	42439.01	REAR CLAMP STRIP
8	1	42440.01	REAR FLAP
9	11	9313065	SETSCREW
10	11	9143005	SELF-LOCKING NUT
11	1	22269.05	1.5m QUAD DRIVE ROTOR (WRAP-AROUND)
12	1	22269.02	DRIVE HUB (QUAD DRIVE)
13	4	9353097	CAPSCREW
14	28	7314366D	F10H FLAIL (CAST)
15	28	21215.01	FLAIL PIVOT BUSH
16	28	7390025	SPECIAL BOLT
17	43	9100024	SELF-LOCKING FLANGE NUT
18	2	7190261	BEARING HOUSING
19	2	0901125	GREASE NIPPLE - 45°
20	2	0901121	GREASE NIPPLE - STRAIGHT
21	1	0901161	GREASE NIPPLE- STRAIGHT
22	2	0600018	BALL BEARING
23	1	7190022	INTERNAL CIRCLIP
24	5	9200023	BOLT
25	1	9200031	BOLT
26	4	9143007	SELF-LOCKING NUT
27	3	8121043	SHIM - 0.4mm
28	3	8121044	SHIM - 0.6mm
29	1	7190292	COVER PLATE
30	4	9313045	SETSCREW
31	4	9100205	SPRING WASHER
32	1	21523.14	1.5M ROLLER ASSEMBLY
33	1	8301302	MOTOR (54HP) - BACK PORTED
	1	8301304	MOTOR (65HP) - BACK PORTED
34	1	7190584	DRIVE COUPLING
35	1	7190015	LOCATING WASHER
36	4	9300144	CAPSCREW
37	1	43486.01	MOTOR COVER - L/H BUILD
	1	43486.02	MOTOR COVER - R/H BUILD
38	1	9200040	BOLT
39	2	30.073.25	BOLT
40	2	8581295	ADAPTOR
41	2	8650106	BONDED SEAL
42	2	8501269	HOSE - 1" BSP FS/FS x 1450mm
43	4	9213167	BOLT
44	1	7350706	DECAL & NUMBER PLATE MODULE

1.5M QUAD DRIVE ROTOR & FLAIL OPTIONS

McCONEL

Module(s): 22269.05



Module(s): 22269.05

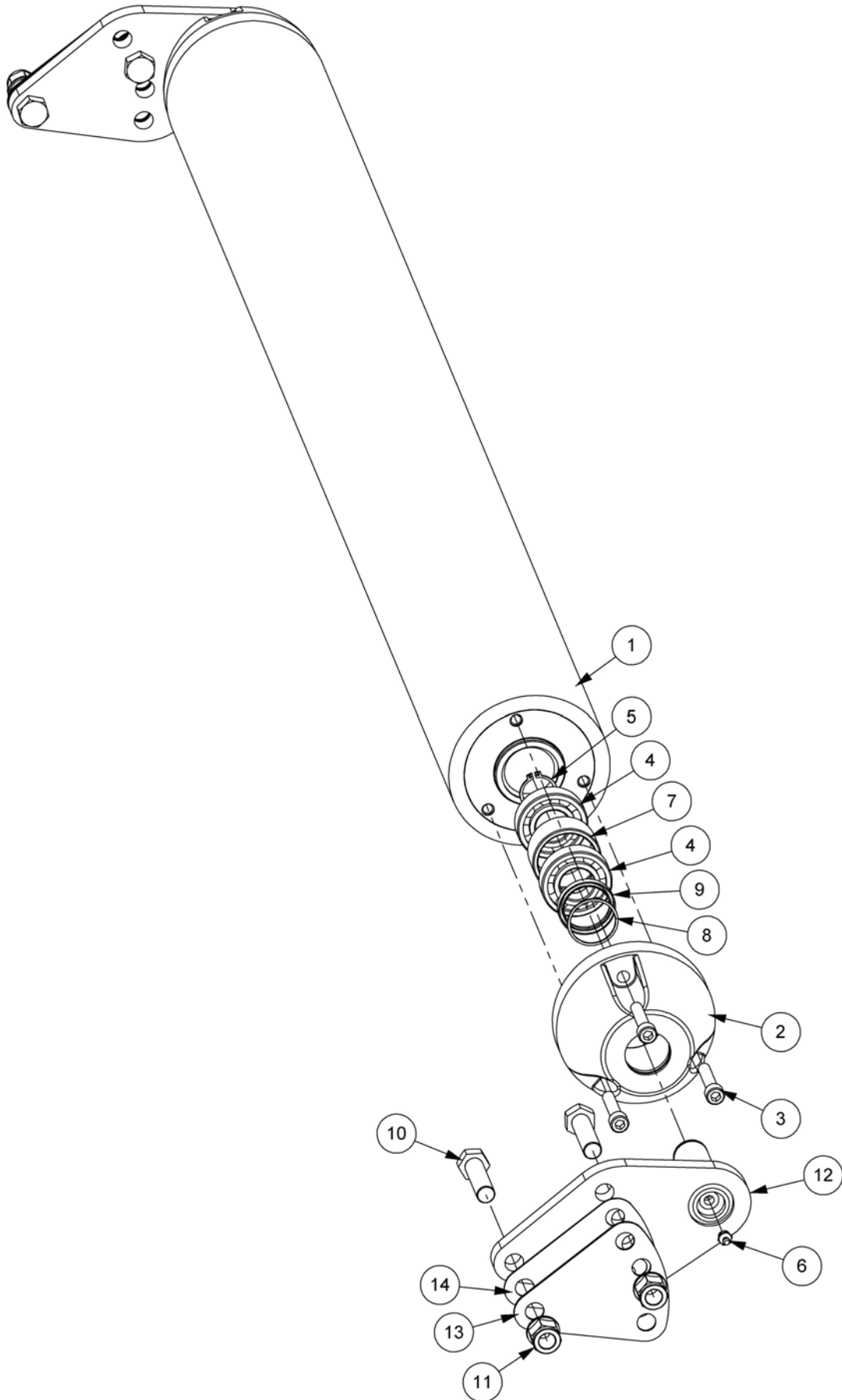
REF.	QTY.	PART No.	DESCRIPTION
			1.5M ROTOR & FLAILS
1	1	22269.05	1.2M QUAD DRIVE ROTOR
2	1	7314366D	F10 DE FLAIL (CAST)
	1	41391.02	F10 DE FLAIL (FORGED)
3	1	7390276	F10 SE FLAIL
4	1	21904.02	F16 DE CAST FLAIL
5	1	7190462	BOOT FLAIL (FORGED)
6	1	7190175	SHACKLE
7	2	7190315	F10 GRASS FLAIL
8	1	0100206	SPRING WASHER
9	2	7190010	SPACER (GRASS FLAIL)
10	1	9100024	SELF-LOCKING FLANGE NUT
11	1	7390025	SPECIAL FLAIL BOLT
12	1	7314223	FLAIL PIVOT BUSH (NARROW)

**NOTE: Flail and fixings quantities stated above are per station.
1.5M Wrap-around type rotor has 28 stations**

1.5M ROLLER ASSEMBLY

McCONNEL

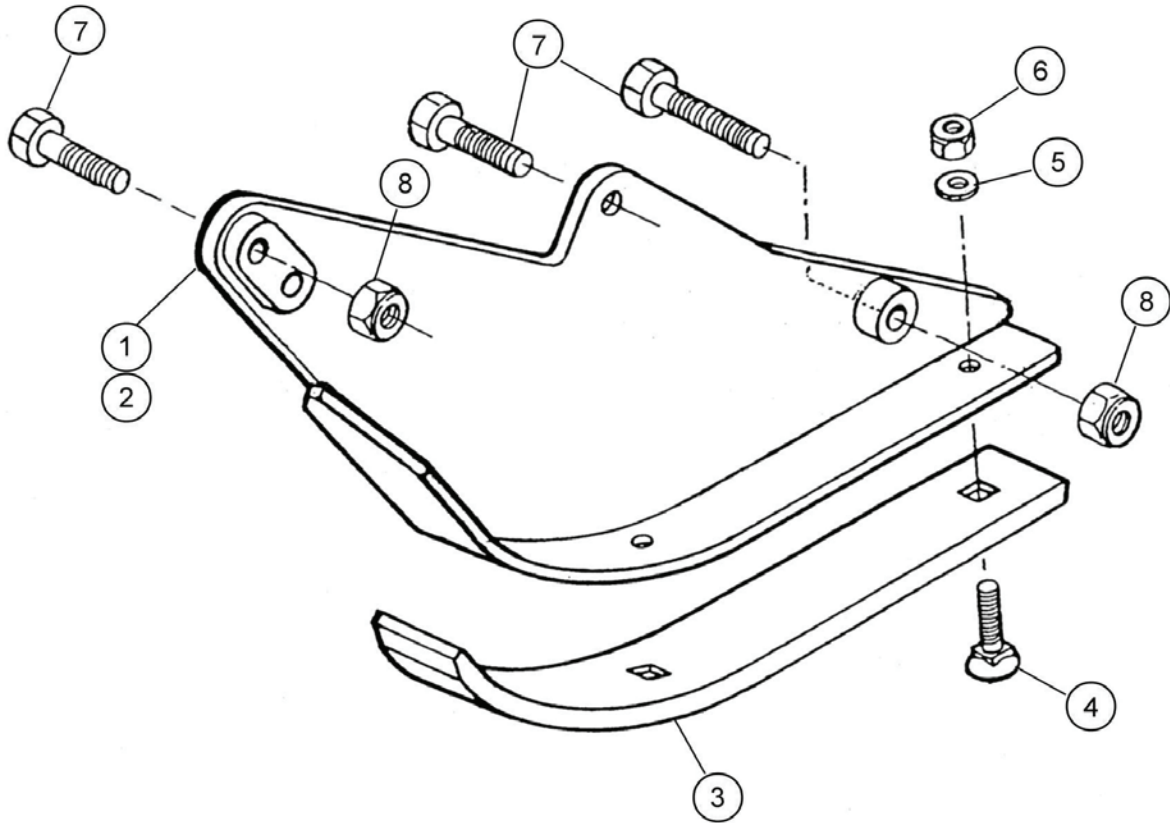
Module(s): 21523.14



1.5M ROLLER ASSEMBLY**McCONNEL**

Module(s): 21523.14

REF.	QTY.	PART No.	DESCRIPTION
		21523.14	1.5M ROLLER ASSEMBLY
1	1	21394.27	ROLLER - 1.5M
2	2	21394.32	ROLLER END CAP
3	6	9343105	CAPSCREW
4	4	0600111	BALL BEARING
5	2	0401230	EXTERNAL CIRCLIP
6	2	0901121	GREASE NIPPLE - STRAIGHT
7	2	21523.31	BEARING SPACER
8	2	0402240	INTERNAL SPIROLOX RING
9	2	8629239	ROTARY SHAFT SEAL
10	4	9200031	BOLT
11	4	9100024	SELF-LOCKING FLANGE NUT
12	2	21524.11	ROLLER BRACKET
13	2	42257.06	SHIM - 2.0mm
14	2	42257.05	SHIM - 1.2mm

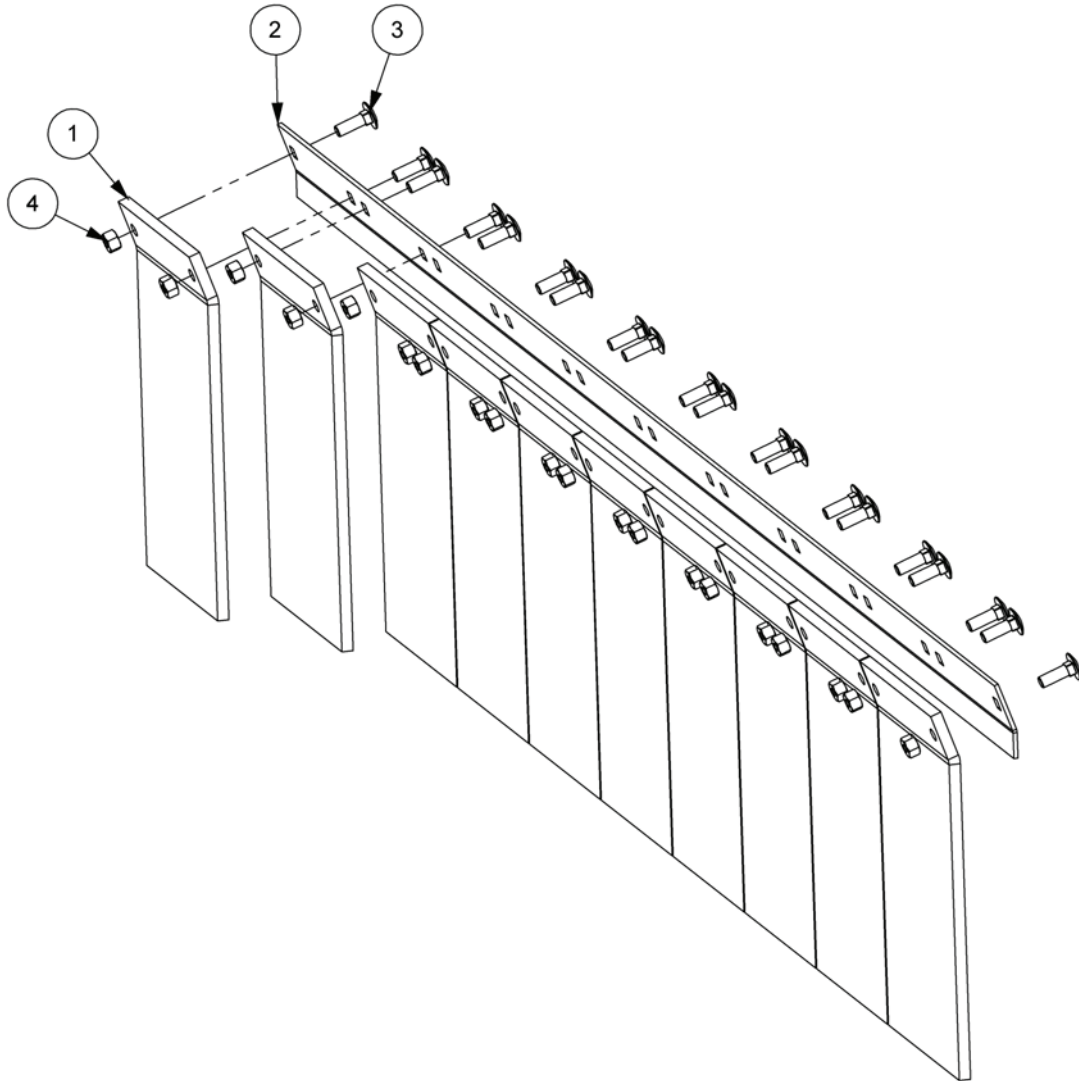


REF.	QTY.	PART No.	DESCRIPTION
		7352251	SKID KIT ASSEMBLY
1	1	42436.01	SKID - L/H
2	1	42436.02	SKID - R/H
3	2	7290391	REPLACEABLE SKID SHOE
4	6	6012034	TINE BOLT
5	6	0100104	PLAIN WASHER
6	6	0141004	CLEVELOK NUT
7	6	9313087	BOLT
8	6	9143007	CLEVELOK NUT

1.5M FRONT FLAP KIT

McCONNEL

Module(s): 7198315



REF.	QTY.	PART No.	DESCRIPTION
		7198315	FRONT FLAP KIT
1	10	7190020	FRONT FLAP
2	1	7198065	FRONT CLAMP STRIP - 1.5m
3	20	9293054	CUP HEAD SQUARE SCREW
4	20	9143004	SELF-LOCKING NUT

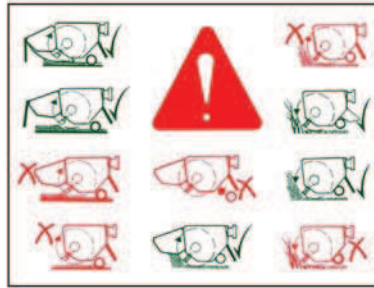
DECAL KIT

Module(s): 7350706

McCONNEL



4



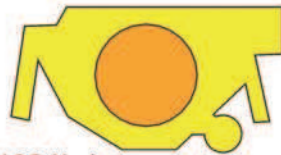
3



5



6



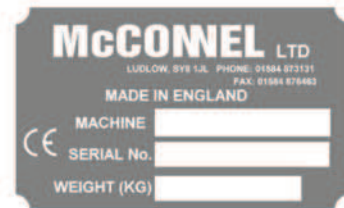
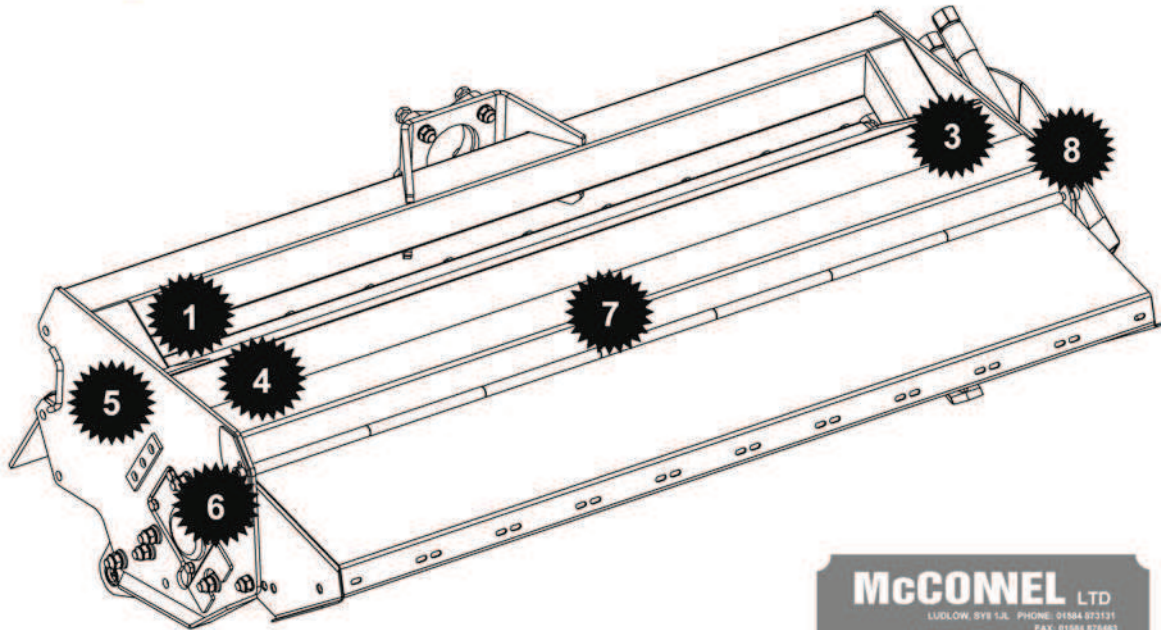
102 l/min.

8

21917.02

McCONNEL

7



1

REF.	QTY.	PART No.	DESCRIPTION
		7350706	DECAL KIT
1	1	1335246	SERIAL No. PLATE
2	4	7103230	POP RIVET
3	1	1290341	DECAL - FLAIL
4	1	1290462	DECAL - INSTRUCTION
5	1	1290392	DECAL - PARTS INFORMATION
6	1	09.810.01	DECAL - GREASE (8HRS)
7	1	1290255	DECAL - McCONNEL
8	1	21917.02	DECAL - HEAD (ORANGE)



McConnel Limited, Temeside Works, Ludlow, Shropshire SY8 1JL. England.
Telephone: 01584 873131. Facsimile: 01584 876463. www.mcconnel.com