
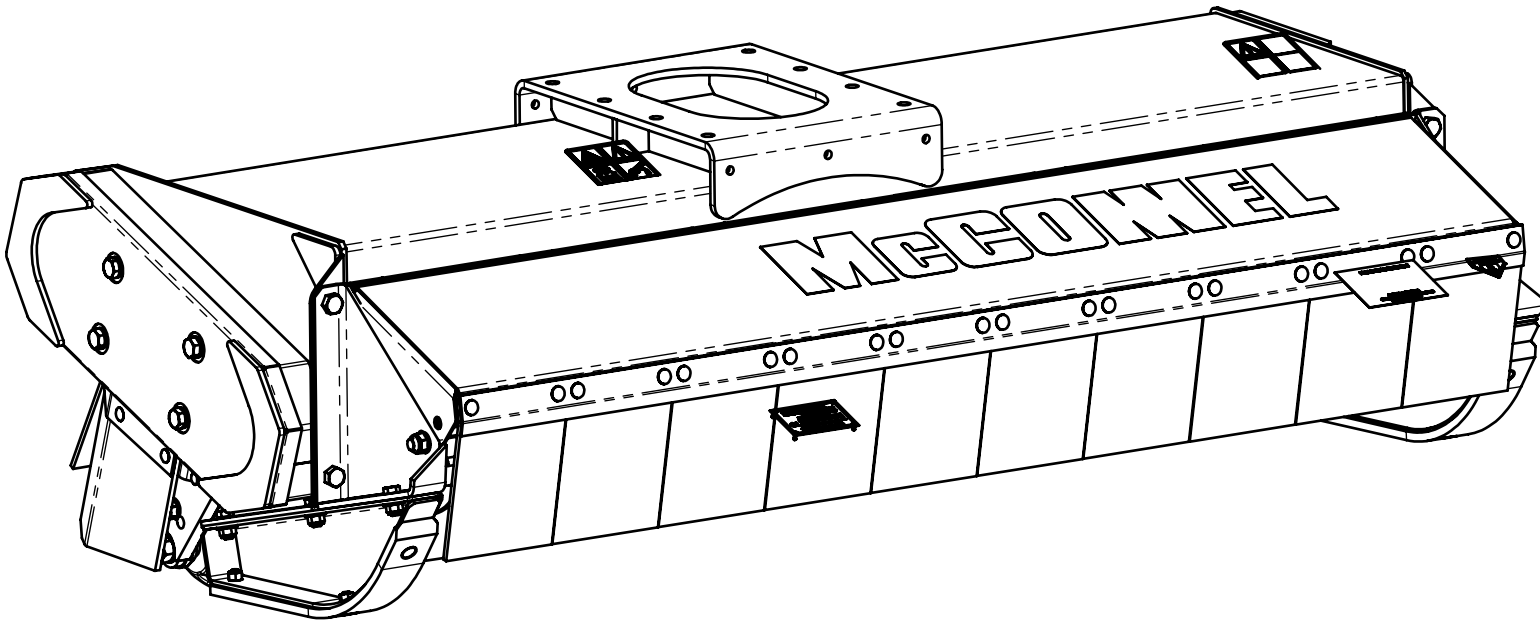




| PART No. | | DESCRIPTION | | | | ALL DIMENSIONS IN MILLIMETRES UNLESS OTHERWISE STATED. | | | | IF IN DOUBT - ASK. | | | | DO NOT SCALE. | | | | 3rd ANGLE PROJECTION. | |  | | | |
|----------|------|-------------------------------|---------------------------|--|----------|--|-----------|--|--|--------------------|------|----------|-------------------------------|---------------|---|--|--|-----------------------|--|--|--|--|--|
| 7290901 | | ASSY-1.6m FLAIL HEAD-BD-LH-IB | | | | | | | | | | | | | | | | | | WELD QUALITY TO BS.5289 | | | |
| ITEM NO. | QTY. | PART NO. | DESCRIPTION | | ITEM NO. | QTY. | PART NO. | DESCRIPTION | | ITEM NO. | QTY. | PART NO. | DESCRIPTION | |  | | | | | | | | |
| 1 | 1 | 21179.01 | W/ASSY-1.6m IND. B/D HEAD | | 24 | 1 | 9113007 | NUT M16 | | 47 | 8 | 9100024 | M16x1.5p S/LOCKING FLANGE NUT | | | | | | | | | | |
| 2 | 1 | 21181.01 | W/ASSY-1.6m OMEGA ROTOR | | 25 | 1 | 7290046 | BELT-POLY CHAIN | | 48 | 11 | 9313065 | SETSCREW M10x30 | | | | | | | | | | |
| 3 | 1 | 7290323 | W/ASSY-DRIVE HUB-4 BOLT | | 26 | 1 | 7290052 | SEALING STRIP-DRIVE COVER | | 49 | 11 | 9143005 | SELF-LOCKING NUT M10 | | | | | | | | | | |
| 4 | 1 | 7290322 | BEARING HOUSING-FREE END | | 27 | 1 | 7290343 | W/ASSY-DRIVE COVER | | 50 | 4 | 9313033 | SETSCREW M6x16 | | | | | | | | | | |
| 5 | 1 | 7290321 | BEARING HOUSING-DRIVE END | | 28 | 4 | 9100207 | SPRING WASHER M16 | | 51 | 4 | 9100203 | SPRING WASHER M6 | | | | | | | | | | |
| 6 | 1 | 0600095 | SPHERICAL ROLLER BEARING | | 29 | 10 | 12.714.35 | BOLT M16x1.5px35LG | | 52 | 2 | 0901121 | GREASE NIPPLE 1/8in BSP Str. | | | | | | | | | | |
| 7 | 1 | 0600096 | SPHERICAL ROLLER BEARING | | 30 | 1 | 7290376 | ASSY-BEARING SUPPORT | | 53 | 1 | 42739.01 | ADAPTOR ELBOW | | | | | | | | | | |
| 8 | 1 | 0600097 | ADAPTOR SLEEVE | | 31 | 2 | 9100106 | FLAT WASHER M12 | | 54 | 1 | 0131007 | 3/4inx16UNF LOCKNUT | | | | | | | | | | |
| 9 | 2 | 7290056 | 110 DIA INT CIRCLIP | | 32 | 2 | 9200017 | BOLT M14x1.5px45 LG | | 55 | 2 | 8600916 | O RING 916 | | | | | | | | | | |
| 10 | 1 | 7290048 | V SEAL-VA85 | | 33 | 1 | 21203.02 | W/ASSY-HOOD BRACKET-RH | | 56 | 1 | 8600908 | O RING 908 | | | | | | | | | | |
| 11 | 1 | 0401255 | 55 DIA EXT CIRCLIP | | 34 | 1 | 21203.01 | W/ASSY-HOOD BRACKET-LH | | 57 | 1 | 8650103 | BONDED SEAL 3/8"BSP | | | | | | | | | | |
| 12 | 1 | 7290049 | V SEAL-VA55 | | 35 | 1 | 7290403 | W/ASSY-FRONT HOOD-1.6m | | 58 | 6 | 9343034 | CAPSCREW M8x16 | | | | | | | | | | |
| 13 | 1 | 7290023 | BEARING RETAINER | | 36 | 1 | 21210.01 | SKID KIT-BELT DRIVE HEAD | | 59 | 3 | 7290073 | SPECIAL TAB WASHER | | | | | | | | | | |
| 14 | 1 | 7290042 | BEARING COVER | | 37 | 1 | 42241.27 | ROLLER ASSY-H.DUTY-1.6m | | 60 | 6 | 9313045 | SETSCREW M10x20 | | | | | | | | | | |
| 15 | 2 | 7290047 | POLY CHAIN SPROCKET | | 38 | 1 | 7290411 | KIT-FRONT FLAPS-1.6m HEAD | | 61 | 1 | 7290013 | BEARING SPACER | | | | | | | | | | |
| 16 | 1 | 8301290 | MOTOR SPLINED EATON | | 39 | 1 | 7290406 | CLAMP STRIP-REAR FLAP-1.6m | | 62 | 1 | 7290065 | HOOD PIVOT BAR-1.6m | | | | | | | | | | |
| 17 | 2 | 7290016 | TAPER LOCK BUSH-40mm DIA | | 40 | 1 | 7290405 | REAR FLAP -1656 X 225 11 HOLES | | 63 | 2 | 8581256 | ADAPTOR 1"BSP X 1.5/16"JIC | | | | | | | | | | |
| 18 | 1 | 7290017 | KEY-RECTANGULAR-38x12x8 | | 41 | 24 | 7190464 | ROLLICOUPE FLAIL | | 64 | 2 | 8581212 | BLOCK ELBOW-90°-MF-1" BSP | | | | | | | | | | |
| 19 | 1 | 43458.01 | W/ASSY-MOTOR PLATE-LH | | 42 | 48 | B001017 | M16 NORDLOCK WASHER | | 65 | 1 | 8581175 | ADAPTOR 3/8"x5/8"BSP MM | | | | | | | | | | |
| 20 | 4 | 7290051 | CLAMP WASHER | | 43 | 24 | 7190117 | FLAIL PIVOT BUSH | | 66 | 1 | 7390336 | MODULE-STICKERS-B/D HEADS | | | | | | | | | | |
| 21 | 6 | 9143006 | SELF-LOCKING NUT M12 | | 44 | 24 | 7390006 | SPECIAL GRADE 10.9 BOLT 5/8" UNF X 103mm | | | | | | | | | | | | | | | |
| 22 | 2 | 9100022 | SELF LOCKING NUT M14 | | 45 | 24 | 0141006 | 5/8in. UNF CLEVELOC NUT | | | | | | | | | | | | | | | |
| 23 | 1 | 9313117 | SETSCREW M16x55 | | 46 | 2 | 9200023 | BOLT M16x1.5px55 LG | | | | | | | | | | | | | | | |

LENGTH :

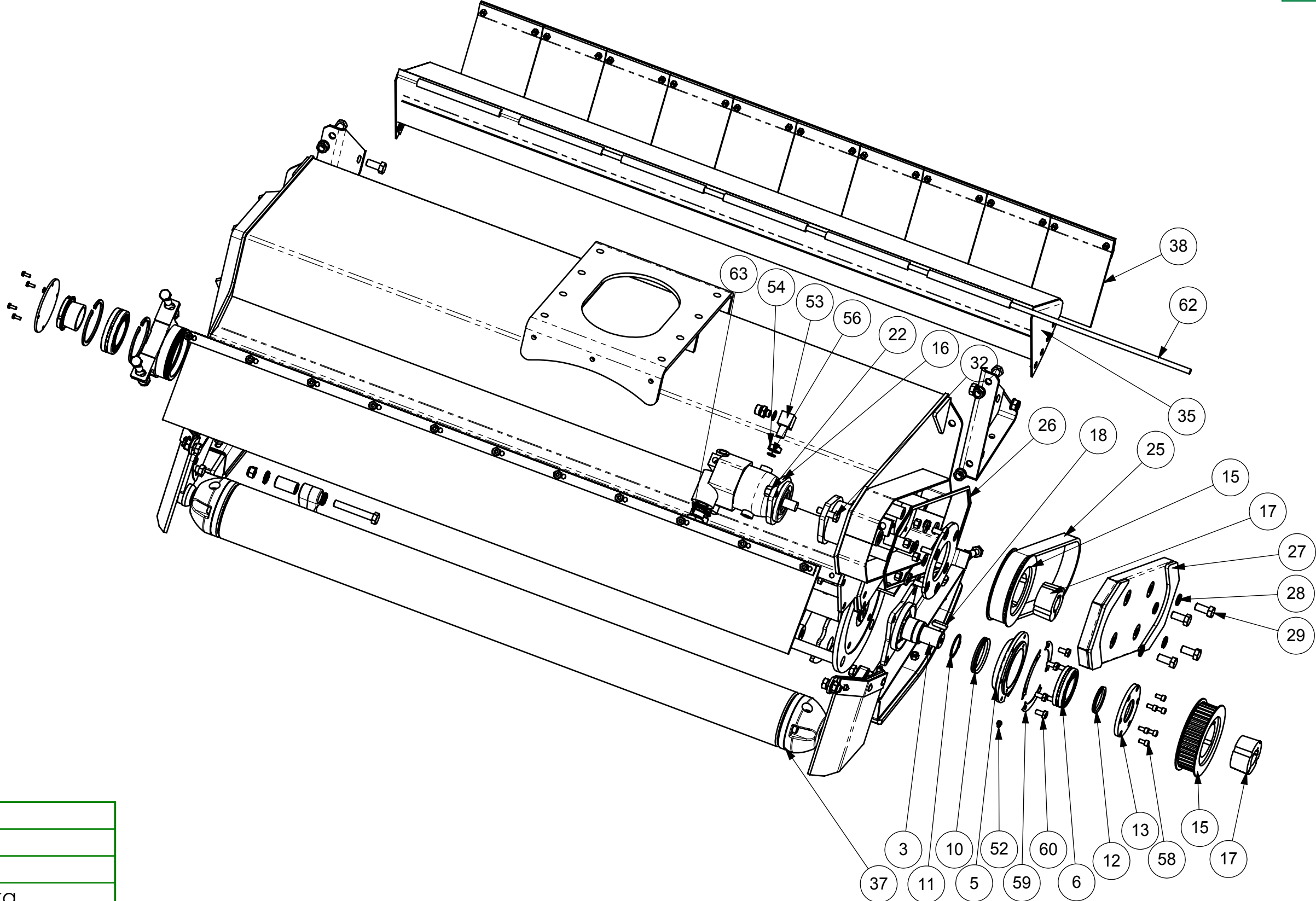
WIDTH :

HEIGHT :


MASS : 392.95kg

| | | | | | | | | | | | | | | |
|------|-------|---------------------|--|--|-------|---------------------------|---------------------------------------|-----------|--|---|---|-----------|----------|------|
| | | | | | | FINISH:- N.A. | | |  ALAMO GROUP EUROPE PO BOX 18 EVESHAM WR11 5SW | SHEET SCALE: | | 1:1 | | |
| | | | | | | UNSPECIFIED TOLERANCES :- | | | | MODELLED: | IR | 19-02-03 | | |
| | | | | | | DIMENSION: | = or<2000 | >2000 | | THIS DRAWING IS THE PROPERTY OF ALAMO GROUP INC. AND IS LOANED WITH THE SPECIFIC AGREEMENT THAT ITS USE WILL BE ONLY IN THE COMPANY'S BEST INTEREST AND THAT IT WILL BE RETURNED ON DEMAND. ALL RIGHTS, TITLES AND INTEREST IN ANY DISCLOSURE HEREON REMAIN THE PROPERTY OF ALAMO GROUP INC.. | DETAILED: | IR | 27-02-03 | |
| | | | | | | DECIMAL DIMENSIONS 0.00mm | +/- 0.25 | AS STATED | | |  | SHEET No: | 1 | OF 4 |
| A | 15357 | PRODUCTION RELEASE. | | | IR | 19/02/2003 | DECIMAL DIMENSIONS 0.0mm AND WHOLE mm | +/- 1.0 | +/- 2.0 | DRAWING No. | | REV: | | |
| REV: | ECN: | REVISIONS: | | | NAME: | DATE: | ANGULAR DIMENSIONS | +/- 1.0° | | ASSY-1.6m FLAIL HEAD-BD-LH-IB | | 7290901 | | A |

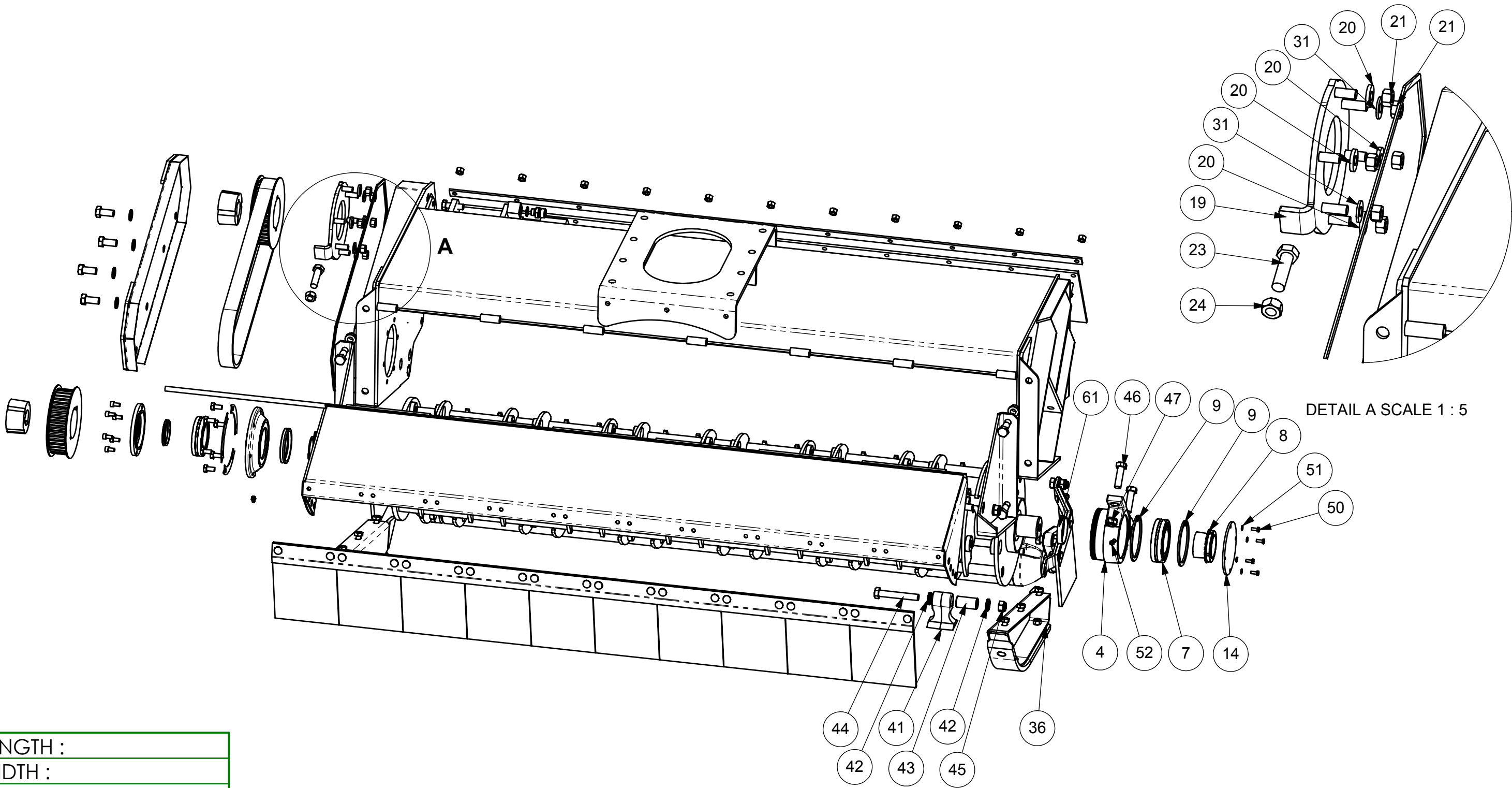
| | | | | | |
|----------|-------------------------------|--|--------------------|---------------|-------------------------|
| PART No. | DESCRIPTION | ALL DIMENSIONS IN MILLIMETRES UNLESS OTHERWISE STATED. | IF IN DOUBT - ASK. | DO NOT SCALE. | 3rd ANGLE PROJECTION. |
| 7290901 | ASSY-1.6m FLAIL HEAD-BD-LH-IB | | | | WELD QUALITY TO BS.5289 |




| |
|-----------------|
| LENGTH : |
| WIDTH : |
| HEIGHT : |
| MASS : 392.95kg |

| | | | | | | | | | | | | | | |
|------|-------|---------------------|--|--|--|------------|-----------|--|--------------|--|-----|------------------------|----------|-----------|
| | | | | | FINISH:- N.A. | | | <div>ALAMO GROUP EUROPE PO BOX 18 EVESHAM WR11 5SW</div> <div>THIS DRAWING IS THE PROPERTY OF ALAMO GROUP INC. AND IS LOANED WITH THE SPECIFIC AGREEMENT THAT ITS USE WILL BE ONLY IN THE COMPANY'S BEST INTEREST AND THAT IT WILL BE RETURNED ON DEMAND. ALL RIGHTS, TITLES AND INTEREST IN ANY DISCLOSURE HEREON REMAIN THE PROPERTY OF ALAMO GROUP INC..</div> | SHEET SCALE: | | 1:1 | | | |
| | | | | | UNSPECIFIED TOLERANCES :- | | | | MODELLED: | | IR | 19-02-03 | | |
| | | | | | DIMENSION: | = or<2000 | >2000 | | DETAILED: | | IR | 27-02-03 | | |
| | | | | | DECIMAL DIMENSIONS 0.00mm | +/- 0.25 | AS STATED | | | | | | | |
| | | | | | DECIMAL DIMENSIONS 0.0mm AND WHOLE mm | +/- 1.0 | +/- 2.0 | | | | | | | |
| A | 15357 | PRODUCTION RELEASE. | | | IR | 19/02/2003 | | TITLE: ASSY-1.6m FLAIL HEAD-BD-LH-IB | | | | DRAWING No. 7290901 | | REV: A |
| REV: | ECN: | REVISIONS: | | | NAME: | DATE: | | | | | | ANGULAR DIMENSIONS | +/- 1.0° | |

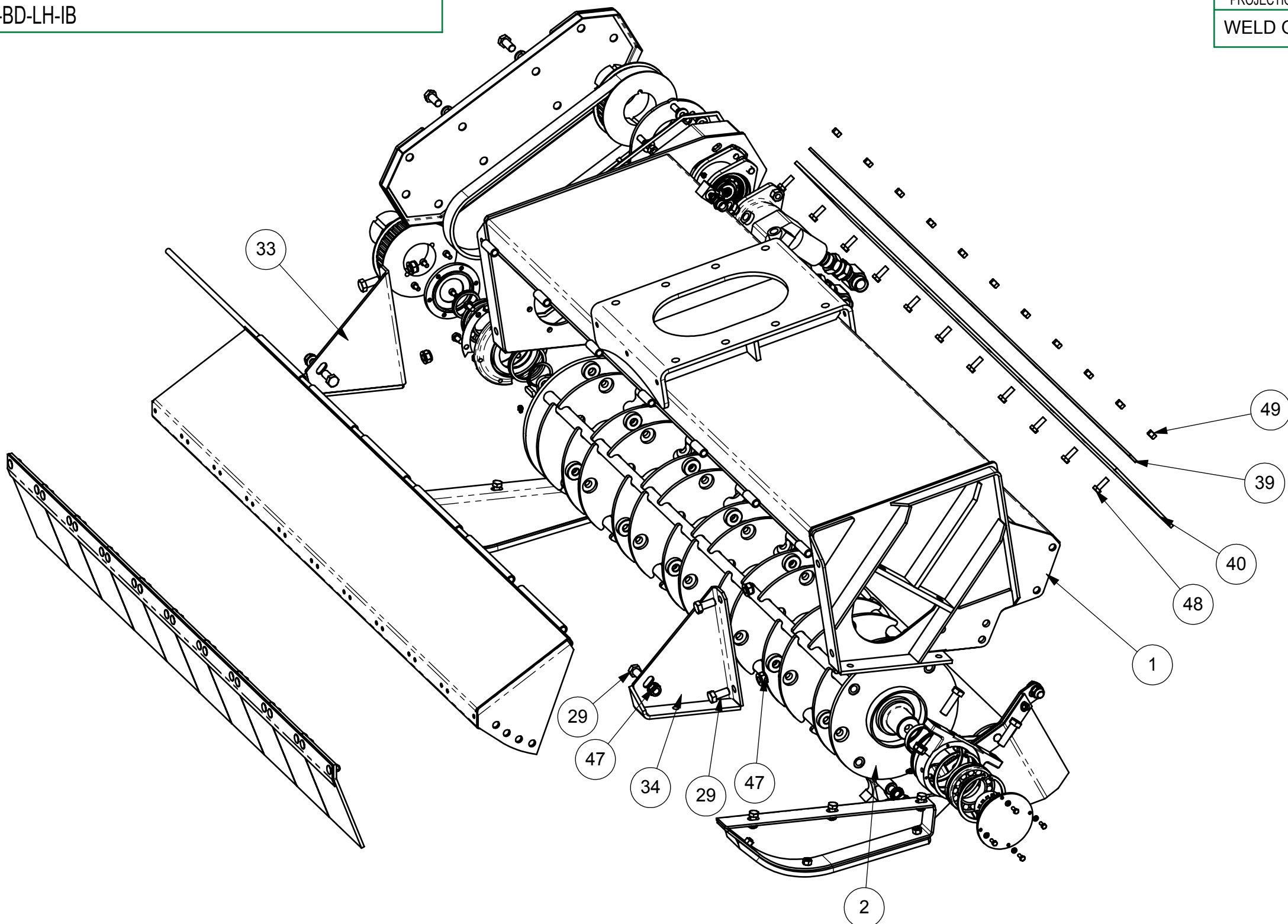
| | | | | | |
|----------|-------------------------------|--|--------------------|---------------|--------------------------|
| PART No. | DESCRIPTION | ALL DIMENSIONS IN MILLIMETRES UNLESS OTHERWISE STATED. | IF IN DOUBT - ASK. | DO NOT SCALE. | 3rd ANGLE PROJECTION. |
| 7290901 | ASSY-1.6m FLAIL HEAD-BD-LH-IB | | | | WELD QUALITY TO BS.5289 |




| |
|-----------------|
| LENGTH : |
| WIDTH : |
| HEIGHT : |
| MASS : 392.95kg |

| | | | | | | | | | | | | | |
|------|-------|---------------------|--|--|---------------------------------------|------------|-----------|---|--------------|-------------|-------------|--------------|--|
| | | | | | FINISH:- N.A. | | |  ALAMO GROUP EUROPE PO BOX 18 EVESHAM WR11 5SW | SHEET SCALE: | | 1:1 | | |
| | | | | | UNSPECIFIED TOLERANCES :- | | | | MODELLED: | | IR 19-02-03 | | |
| | | | | | DIMENSION: | = or<2000 | >2000 | THIS DRAWING IS THE PROPERTY OF ALAMO GROUP INC. AND IS LOANED WITH THE SPECIFIC AGREEMENT THAT ITS USE WILL BE ONLY IN THE COMPANY'S BEST INTEREST AND THAT IT WILL BE RETURNED ON DEMAND. ALL RIGHTS, TITLES AND INTEREST IN ANY DISCLOSURE HEREON REMAIN THE PROPERTY OF ALAMO GROUP INC.. | DETAILED: | | IR 27-02-03 | | |
| | | | | | DECIMAL DIMENSIONS 0.00mm | +/- 0.25 | AS STATED | | C | SHEET No: | | 3 OF 4 | |
| | | | | | DECIMAL DIMENSIONS 0.0mm AND WHOLE mm | +/- 1.0 | +/- 2.0 | | | DRAWING No. | | REV: | |
| A | 15357 | PRODUCTION RELEASE. | | | IR | 19/02/2003 | | TITLE: ASSY-1.6m FLAIL HEAD-BD-LH-IB | | | | 7290901 A | |
| REV: | ECN: | REVISIONS: | | | NAME: | DATE: | | ANGULAR DIMENSIONS | | +/- 1.0° | | | |

| | | | | | |
|----------|-------------------------------|--|--------------------|---------------|-------------------------|
| PART No. | DESCRIPTION | ALL DIMENSIONS IN MILLIMETRES UNLESS OTHERWISE STATED. | IF IN DOUBT - ASK. | DO NOT SCALE. | 3rd ANGLE PROJECTION. |
| 7290901 | ASSY-1.6m FLAIL HEAD-BD-LH-IB | | | | WELD QUALITY TO BS.5289 |



| |
|-----------------|
| LENGTH : |
| WIDTH : |
| HEIGHT : |
| MASS : 392.95kg |

| | | | | | | | | | | | | |
|------|-------|---------------------|--|--|--|------------|-----------|--|--------------|-------------|-----|----------|
| | | | | | FINISH:- N.A. | | | <div>ALAMO GROUP EUROPE PO BOX 18 EVESHAM WR11 5SW</div> <div>THIS DRAWING IS THE PROPERTY OF ALAMO GROUP INC. AND IS LOANED WITH THE SPECIFIC AGREEMENT THAT ITS USE WILL BE ONLY IN THE COMPANY'S BEST INTEREST AND THAT IT WILL BE RETURNED ON DEMAND. ALL RIGHTS, TITLES AND INTEREST IN ANY DISCLOSURE HEREON REMAIN THE PROPERTY OF ALAMO GROUP INC..</div> <div>TITLE: ASSY-1.6m FLAIL HEAD-BD-LH-IB</div> | SHEET SCALE: | | 1:1 | |
| | | | | | UNSPECIFIED TOLERANCES :- | | | | MODELLED: | | IR | 19-02-03 |
| | | | | | DIMENSION: | = or<2000 | >2000 | | DETAILED: | | IR | 27-02-03 |
| | | | | | DECIMAL DIMENSIONS 0.00mm | +/- 0.25 | AS STATED | | C | SHEET No: | | 4 OF 4 |
| | | | | | DECIMAL DIMENSIONS 0.0mm AND WHOLE mm | +/- 1.0 | +/- 2.0 | | | DRAWING No. | | REV: |
| | | | | | ANGULAR DIMENSIONS | +/- 1.0° | | | | 7290901 | | A |
| A | 15357 | PRODUCTION RELEASE. | | | IR | 19/02/2003 | | | | | | |
| REV: | ECN: | REVISIONS: | | | NAME: | DATE: | | | | | | |