

Publication 225
Revised: October 2007

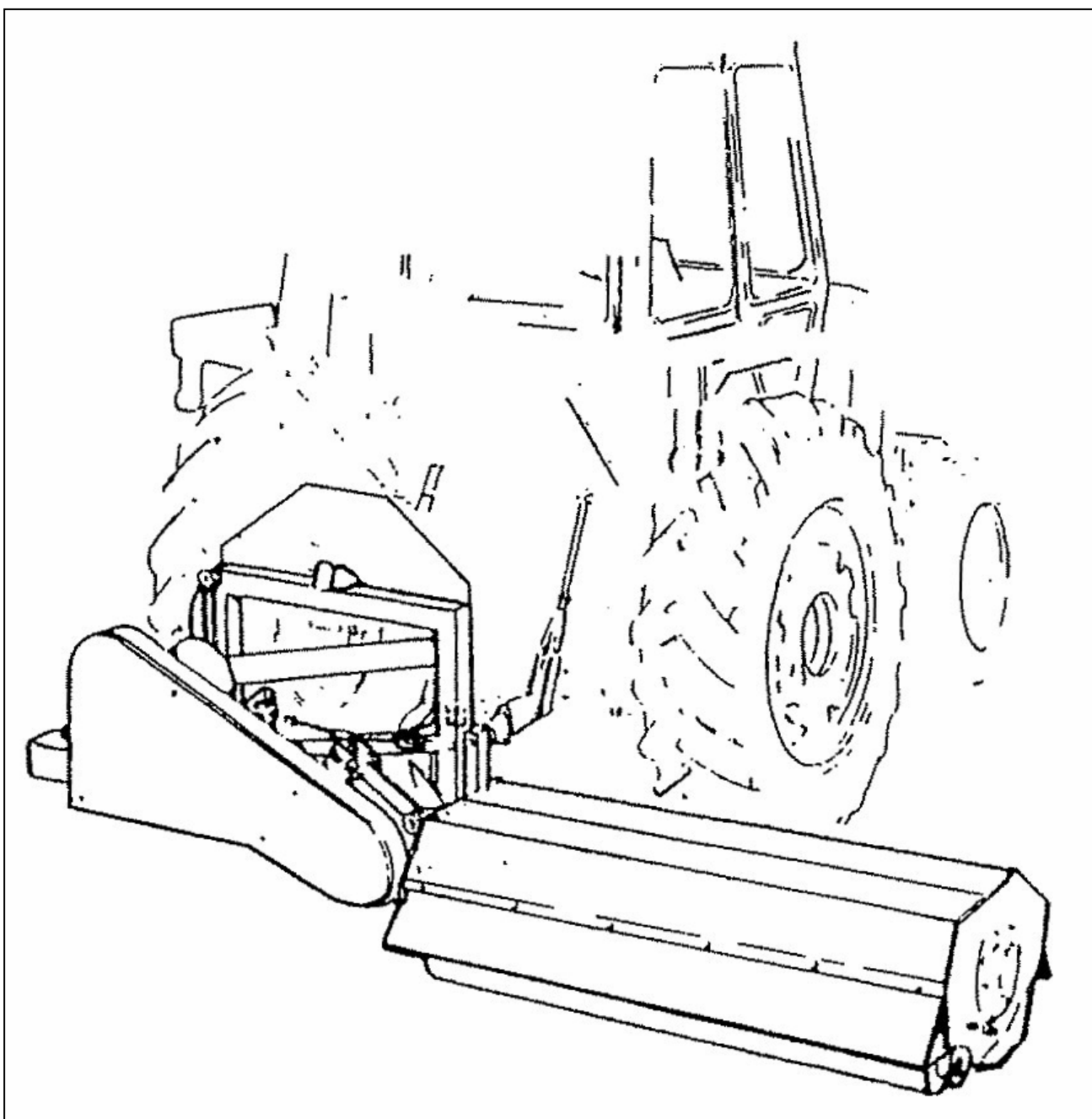


TA1600

TA2000

VERGE MOWER

Parts Manual





For best performance ...

USE ONLY GENUINE McCONEL SERVICE PARTS

*To be assured of the latest design improvements purchase your
'Genuine Replacements' from the 'Original Equipment Manufacturer'*

McCONEL LIMITED

Through your local Dealer or Stockist

Always quote:

- ***Machine Type***
- ***Serial Number***
- ***Part Number***

*Design improvements may alter some of the parts listed in this manual –
the latest part will always be supplied when it is interchangeable with an earlier one.*

CONTENTS

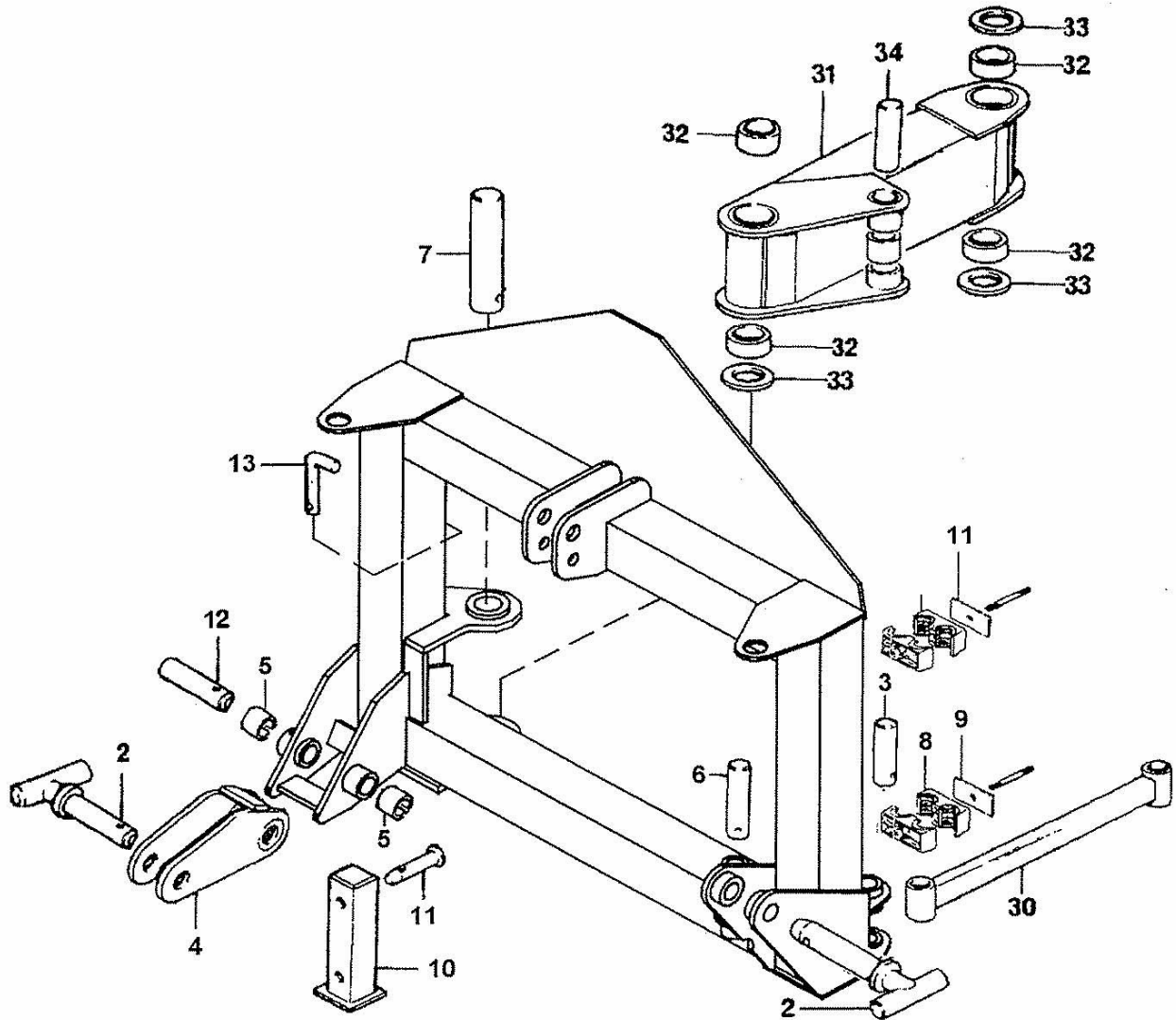
	<i>Page No.</i>
MAINFRAME – <i>Rear Mounted Models</i>	1
MAINFRAME – <i>Front Mounted Models</i>	3
ARM ASSEMBLY	7
GEARBOX ASSEMBLY	11
GEARBOX COMPONENTS	15
HYDRAULIC RAMS & HOSE KIT ASSEMBLY	17
HYDRAULIC RAM ASSEMBLY	19
FLOAT KIT ASSEMBLY	21
COWL ASSEMBLY – <i>TA1600</i>	23
COWL ASSEMBLY – <i>TA2000</i>	25
ROLLER ASSEMBLY – <i>TA1600</i>	27
ROLLER ASSEMBLY – <i>TA2000</i>	29
ROTOR & BEARING ASSEMBLY – <i>TA1600</i>	31
ROTOR & BEARING ASSEMBLY – <i>TA2000</i>	33
DECAL IDENTIFICATION	35
DECAL LOCATION & DECAL KITS	37

Models: TA1600 / TA2000



MAINFRAME – R/H Rear Mount

Module:
76.004.02



MAINFRAME – R/H Rear Mount

REF	QTY.	PART No.	DESCRIPTION
		76.004.02	MAINFRAME - REAR MOUNTED R/H BUILD
1	1	1335246	SERIAL NUMBER PLATE
1 *	1	42146.01	MAINFRAME - Rear Mounted R/H Build
1	4	7103230	POP RIVET
2	2	00.372.01	LINCH PIN
2 *	2	41.281.01	PIN
3 *	1	03.654.19	PIN
3	1	05.201.07	TENSION PIN
3	1	05.953.01	GREASE NIPPLE
4	1	09.241.01	LINK - BREAKOUT
5	2	02.771.06	TENSION BUSH
6 *	1	03.653.54	PIN
6	1	05.291.05	BOLT
6	1	05.287.01	SELF-LOCKING NUT
6	1	05.953.01	GREASE NIPPLE
7 *	1	03.656.74	PIN
7	1	05.282.02	SPRING WASHER
7	1	05.286.02	NUT
7	1	05.292.11	BOLT
7	1	05.953.01	GREASE NIPPLE
8	2	04.282.30	STUD
8	2	05.281.01	FLAT WASHER
8	2	05.282.01	SPRING WASHER
8	2	05.286.01	NUT
8 *	8	06.430.02	HOSE CLAMP
9	2	06.418.02	CLAMP PLATE
10	1	41332.01	STAND
11	1	00.372.01	LINCH PIN
11 *	1	03.652.01	PIN
12 *	1	03.654.71	PIN
12	1	05.201.07	TENSION PIN
12	1	05.953.01	GREASE NIPPLE
13 *	1	03.651.18	PIN
13	1	05.964.01	SPRING COTTER
14 *	1	03.652.23	PIN
14	1	05.284.14	SPLIT COTTER
15	1	42130.01	TRANSPORT STRAP
		74.992.02	SWING LINKS
30	1	09.237.01	LINK - SWING
31	1	41.246.02	LINK - SWING RAM
32	4	08.297.02	BUSH
33	3	09.232.01	THRUST WASHER
34 *	1	03.653.71	PIN
34	1	05.201.07	TENSION PIN
34	1	05.953.01	GREASE NIPPLE
35	1	09.235.02	SPACER

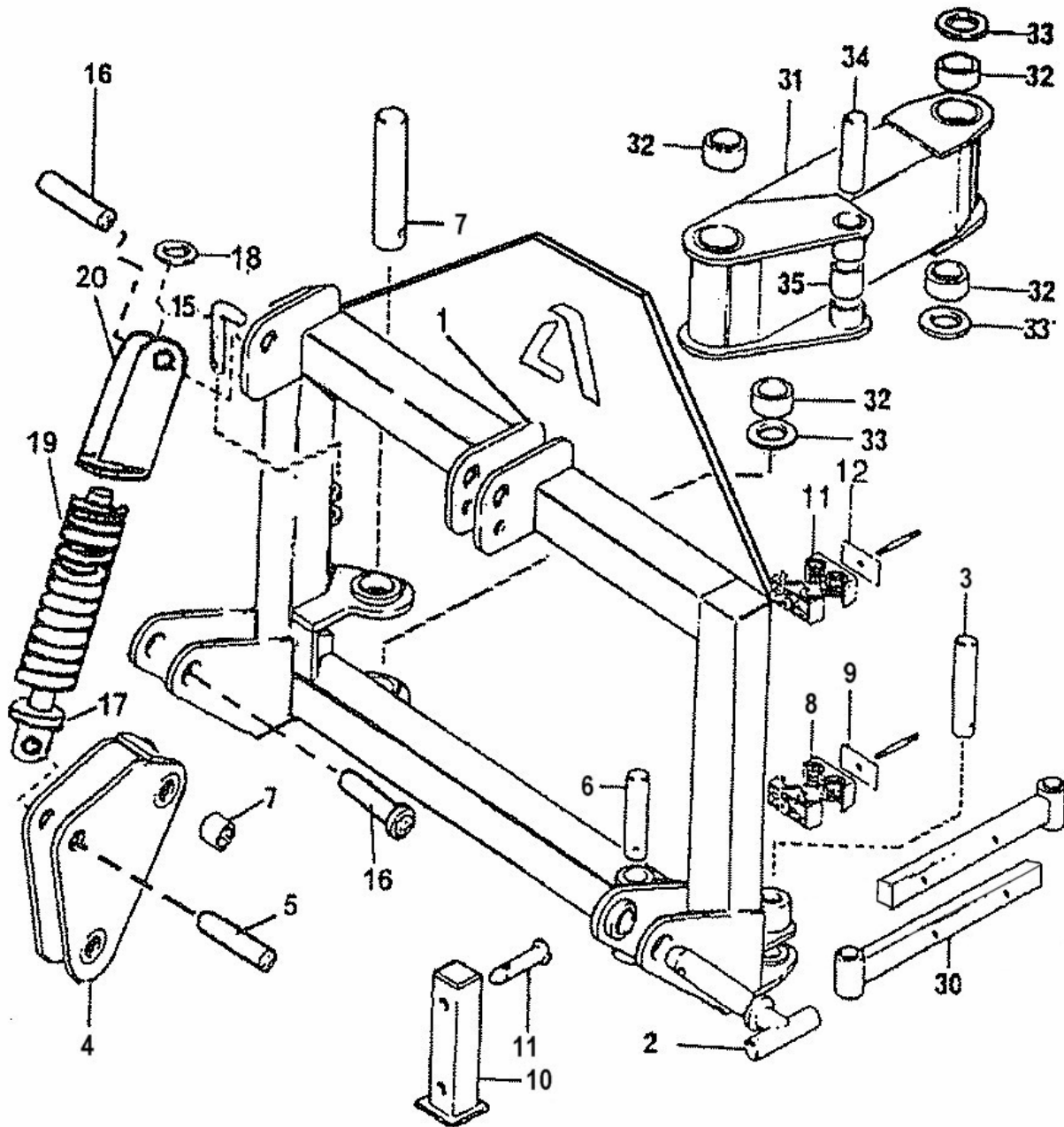
* Main part in group - related parts have same reference number

Models: TA1600 / TA2000



MAINFRAME – R/H Front Mount

Module:
76.004.03



MAINFRAME – R/H Front Mount

REF	QTY.	PART No.	DESCRIPTION
		76.004.02	MAINFRAME - FRONT MOUNTED R/H BUILD
1	1	1335246	SERIAL NUMBER PLATE
1	*	42146.03	MAINFRAME - Front Mounted R/H Build
1	4	7103230	POP RIVET
2	2	00.372.01	LINCH PIN
2	*	41.281.01	PIN
3	*	03.654.19	PIN
3	1	05.201.07	TENSION PIN
3	1	05.953.01	GREASE NIPPLE
4	1	41868.01	LINK - BREAKOUT
5	2	02.771.06	TENSION BUSH
6	*	03.653.54	PIN
6	1	05.291.05	BOLT
6	1	05.287.01	SELF-LOCKING NUT
6	1	05.953.01	GREASE NIPPLE
7	*	03.656.74	PIN
7	1	05.282.02	SPRING WASHER
7	1	05.286.02	NUT
7	1	05.292.11	BOLT
7	1	05.953.01	GREASE NIPPLE
8	2	04.282.30	STUD
8	2	05.281.01	FLAT WASHER
8	2	05.282.01	SPRING WASHER
8	2	05.286.01	NUT
8	*	06.430.02	HOSE CLAMP
9	2	06.418.02	CLAMP PLATE
10	1	41803.01	STAND
11	1	00.372.01	LINCH PIN
11	*	03.652.01	PIN
12	*	03.654.71	PIN
12	1	05.201.07	TENSION PIN
12	1	05.953.01	GREASE NIPPLE
13	*	03.651.18	PIN
13	1	05.964.01	SPRING COTTER
14	*	03.652.23	PIN
14	1	05.284.14	SPLIT COTTER
15	1	42130.01	TRANSPORT STRAP
16	2	03.653.24	PIN
16	2	05.287.01	NUT
16	2	05.291.05	BOLT
16	2	05.953.01	GREASER
17	1	41866.01	ROD
18	1	41865.01	RETAINER
19	1	03.865.02	SPRING
20	1	41867.01	BRACKET
21	1	05.286.06	NUT

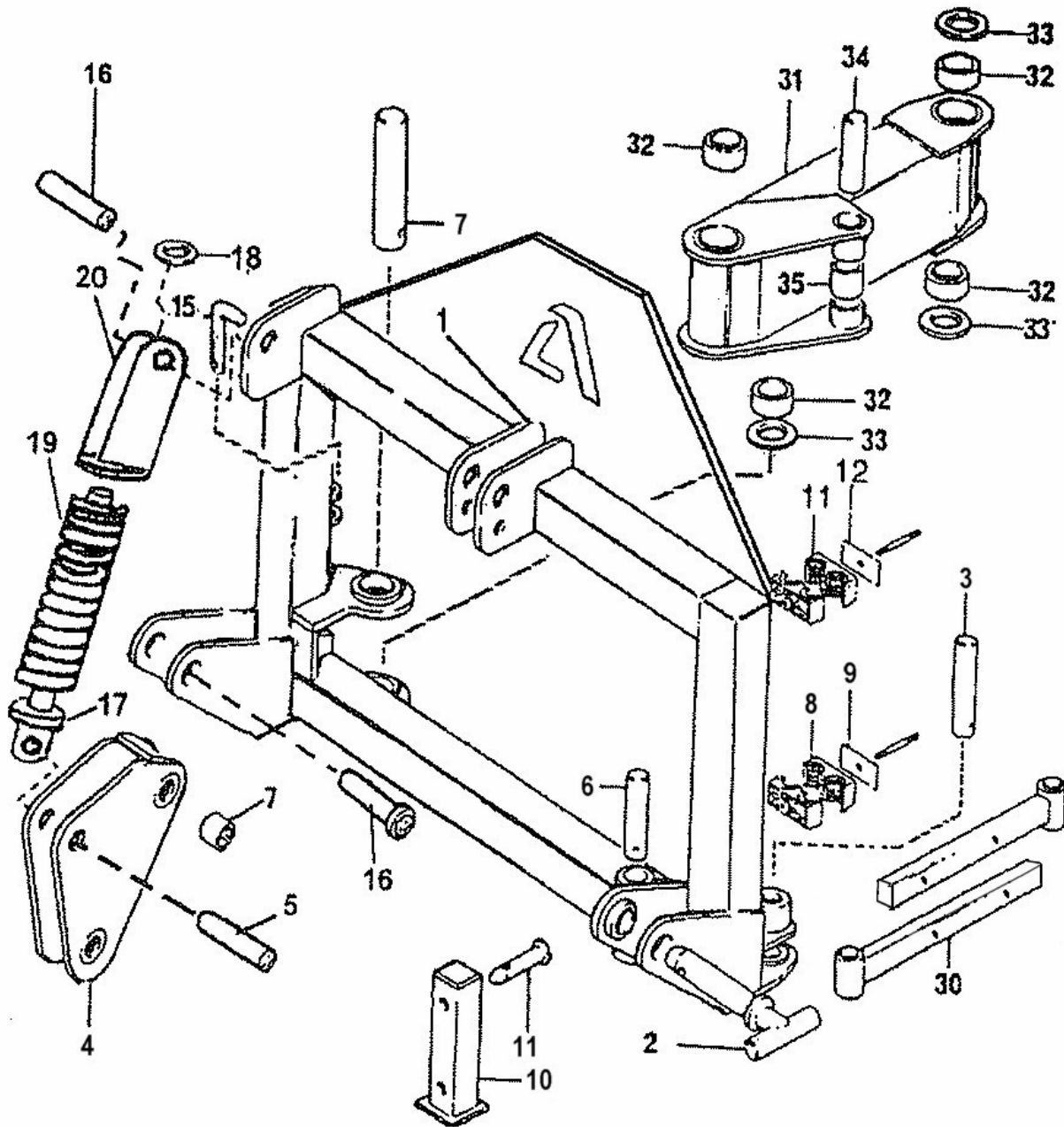
* Main part in group - related parts have same reference number

Models: TA1600 / TA2000



MAINFRAME – R/H Front Mount

Module:
76.004.03



MAINFRAME – R/H Front Mount

REF	QTY.	PART No.	DESCRIPTION
		74.992.03	SWING LINKS
30 *	1	42318.01	LINK - SWING
30	4	05.291.01	BOLT
30	4	05.282.01	SPRING WASHER
30	4	05.286.01	NUT
31	1	41.246.02	LINK - SWING RAM
32	4	08.297.02	BUSH
33	3	09.232.01	THRUST WASHER
34 *	1	03.653.71	PIN
34	1	05.201.07	TENSION PIN
34	1	05.953.01	GREASE NIPPLE
35	1	09.235.02	SPACER

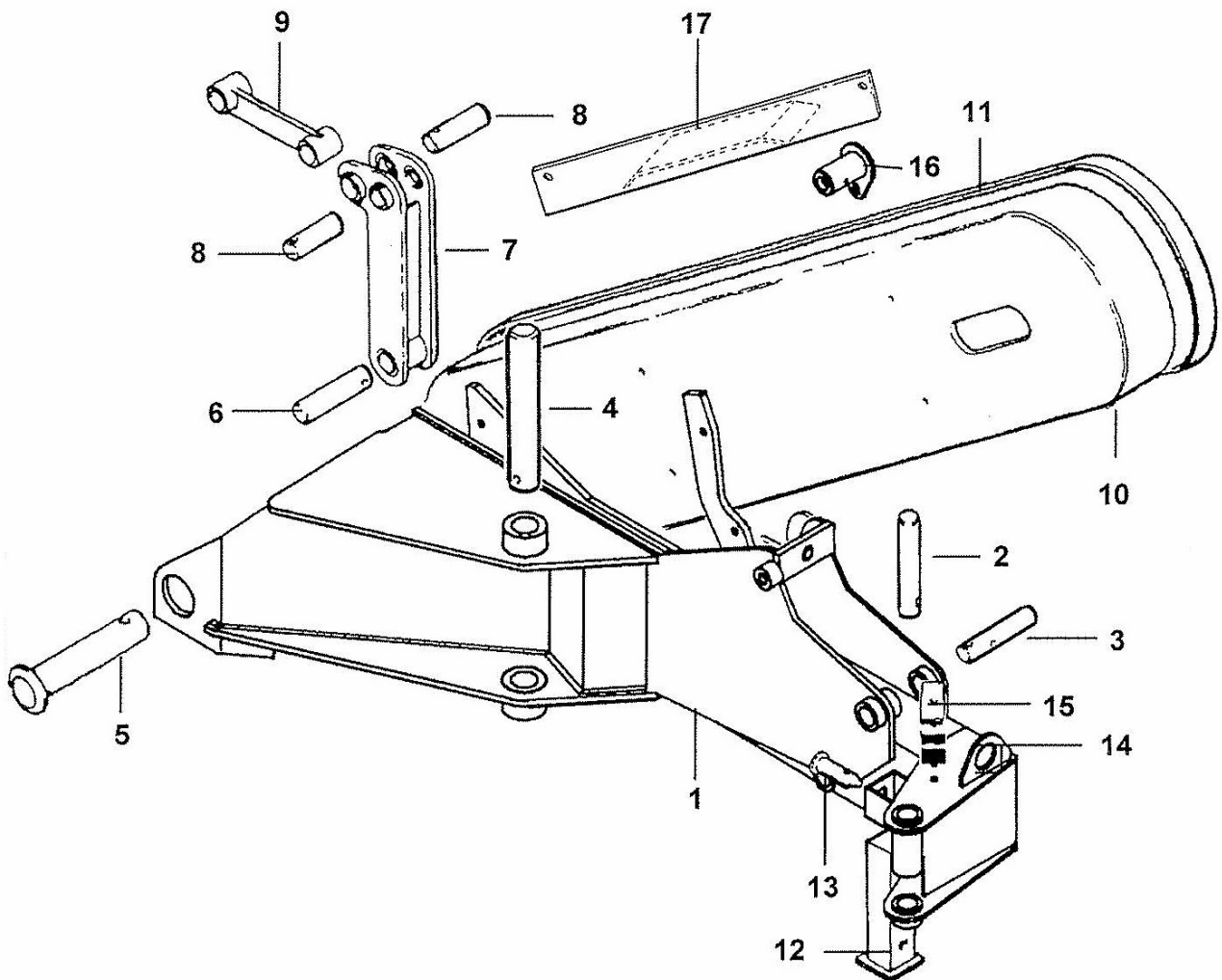
* Main part in group - related parts have same reference number

ARM ASSEMBLIES

Module:

76.005.01 – Rear Mounted R/H Build

76.005.02 – Front Mounted R/H Build



ARM ASSEMBLIES

REF	QTY.	PART No.	DESCRIPTION
		76.005.01	ARM ASSEMBLY - REAR MOUNT R/H BUILD
		76.005.02	ARM ASSEMBLY - FRONT MOUNT R/H BUILD
1	1	41.256.04	ARM - Rear Mounted R/H Build
1	1	41.256.03	ARM - Front Mounted R/H Build
2 *	1	03.654.70	PIN
2	1	05.201.07	TENSION PIN
2	1	05.953.01	GREASE NIPPLE
3 *	1	03.654.69	PIN
3	1	05.282.01	SPRING WASHER
3	1	05.286.01	NUT
3	1	05.291.06	BOLT
4 *	1	03.656.75	PIN
4	1	05.282.02	SPRING WASHER
4	1	05.286.02	NUT
4	1	05.292.11	BOLT
4	1	05.953.03	GREASE NIPPLE
5 *	1	03.656.73	PIN
5	1	05.282.02	SPRING WASHER
5	1	05.286.02	NUT
5	1	05.292.11	BOLT
5	1	05.953.01	GREASE NIPPLE
6 *	1	02.837.01	PIN
6	1	04.175.01	STUD
6	1	05.281.02	FLAT WASHER
6	1	05.968.02	SELF LOCKING NUT
7	1	05.953.01	GREASE NIPPLE
7 *	1	41.241.01	LINK - RAM
8 *	2	03.654.53	PIN
8	2	05.201.11	TENSION PIN
9	2	05.953.01	GREASE NIPPLE
9 *	1	41.060.01	LINK - COWL
10	2	05.264.12	SETSCREW
10	2	05.264.13	SETSCREW
10	4	05.282.02	SPRING WASHER
10 *	1	41764.02	GUARD - Rear Mounted R/H Build
10 *	1	41764.01	GUARD - Front Mounted R/H Build
11	4	05.264.11	SETSCREW
11	4	05.282.02	SPRING WASHER
11 *	1	41767.02	GUARD COVER - Rear Mounted R/H Build
11 *	1	41767.01	GUARD COVER - Front Mounted R/H Build

* Main part in group - related parts have same reference number

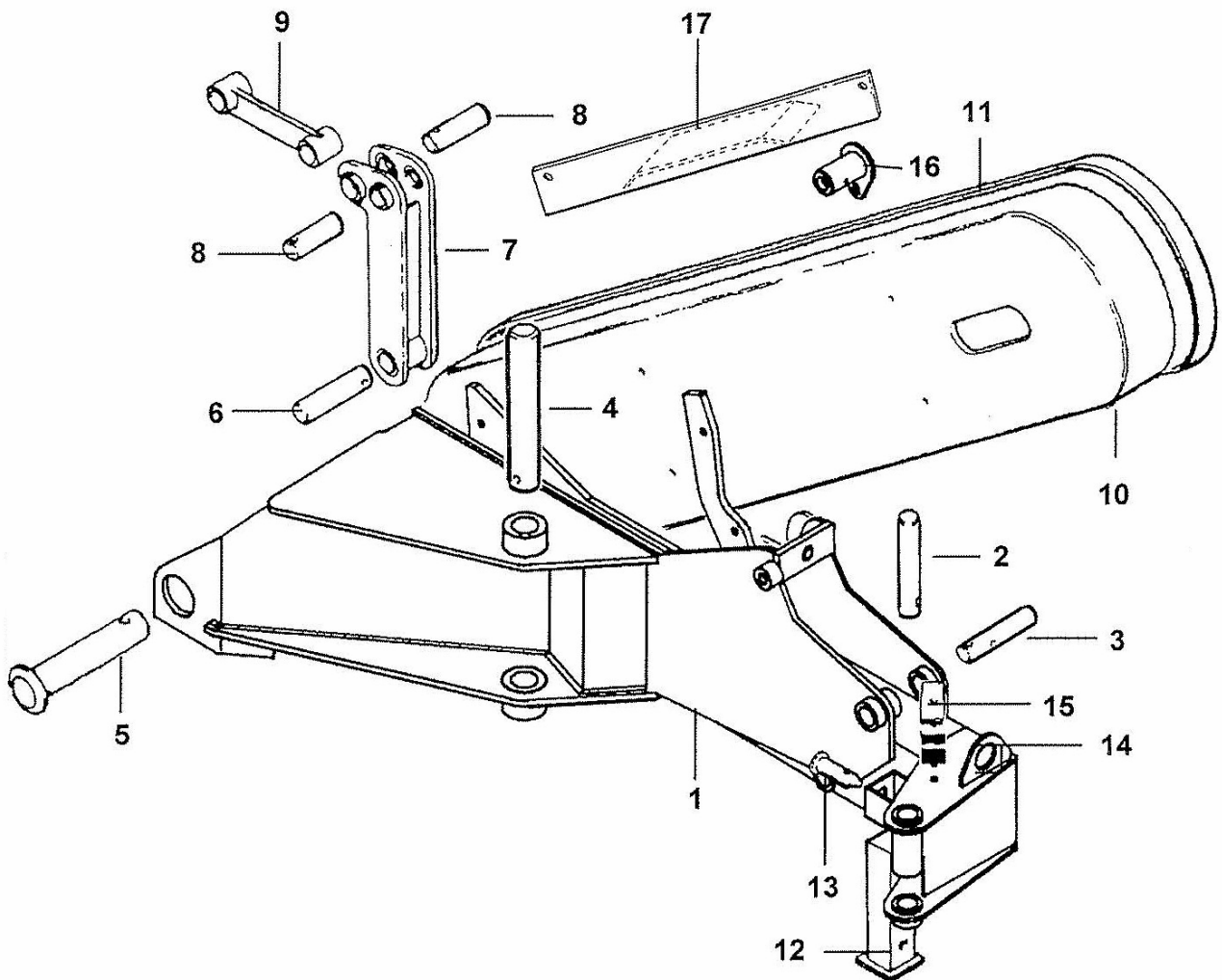
....continued

ARM ASSEMBLIES

Module:

76.005.01 – Rear Mounted R/H Build

76.005.02 – Front Mounted R/H Build



ARM ASSEMBLIES

REF	QTY.	PART No.	DESCRIPTION
12	1	41332.01	STAND - Rear Mounted Builds
12	1	41803.01	STAND - Front Mounted Builds
13	1	00.372.01	LINCH PIN
13 *	1	03.652.01	PIN
14	1	04.282.32	STUD
14	1	05.281.01	FLAT WASHER
14	1	05.282.01	SPRING WASHER
14	1	05.286.01	NUT
14 *	2	06.430.02	HOSE CLAMP
15	1	06.418.02	CLAMP PLATE
16 *	1	42652.04	PIN
16	1	05.953.01	GREASE NIPPLE
16	1	05.282.03	SPRING WASHER
16	1	05.281.03	FLAT WASHER
16	1	05.264.21	SETSCREW
17	1	43008.01	BELT SUPPORT BRACKET

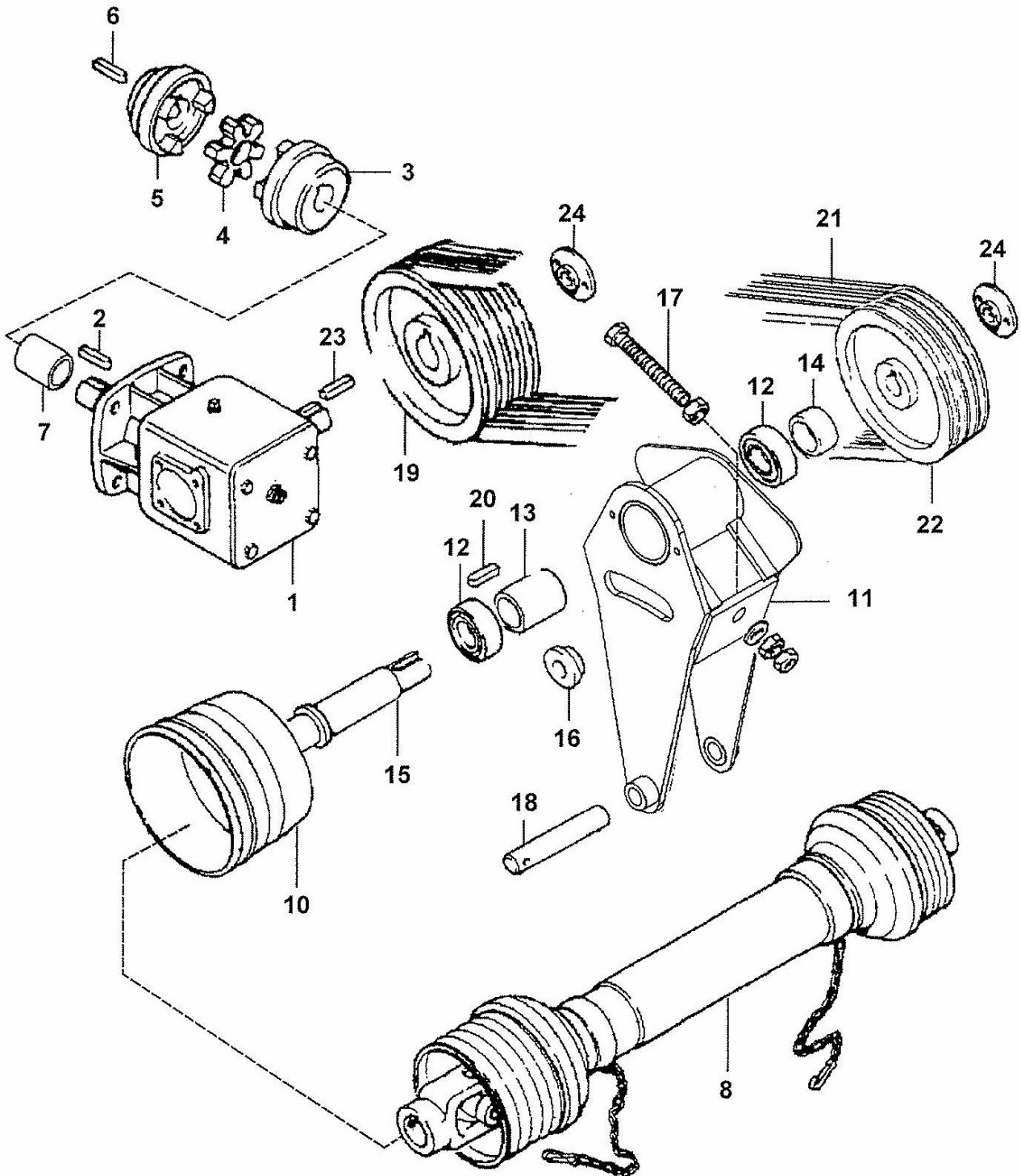
* Main part in group - related parts have same reference number

GEARBOX ASSEMBLIES

Modules:

74.993.01 – R/H Rear Mount & R/H Front Mount (ACW) Builds

74.993.02 – R/H Front Mount (CW) Build



GEARBOX ASSEMBLIES

REF	QTY.	PART No.	DESCRIPTION
		74.993.01	GEARBOX ASSEMBLY - RM & ACW FM BUILD
		74.993.02	GEARBOX ASSEMBLY - CW FM BUILD
1	1	02.824.01	WASHER
1	1	05.264.24	SETSCREW
1	1	05.282.03	SPRING WASHER
1	*	09.250.04	GEARBOX - Rear & ACW Front Mount Builds
1	*	09.250.03	GEARBOX - CW Front Mount Build
2	1	05.960.22	KEY
3	2	05.388.01	GRUBSCREW
3	*	41.250.02	HUB COUPLING
4	1	41.250.04	DRIVE COUPLING
5	1	41.250.03	HUB COUPLING
6	1	05.960.13	KEY
7	1	42613.02	SPACER
		72.478.01	PTO SHAFT ASSEMBLY - RM & ACW FM BUILD
		72.478.03	PTO SHAFT ASSEMBLY - CW FM BUILD
8	*	41624.06	PTO SHAFT - Rear & ACW Front Mount Builds
8	*	41624.07	PTO SHAFT - CW Front Mount Build
8	-	41624.31	CROSS JOURNAL SET
8	-	41624.34	COMPLETE SHIELD
		74.996.01	DRIVE BRACKET, PULLEYS & BELTS REAR MOUNT BUILD
		74.996.02	DRIVE BRACKET, PULLEYS & BELTS FRONT MOUNT BUILD
10	2	05.264.11	SETSCREW
10	2	05.281.02	FLAT WASHER
10	2	05.282.02	SPRING WASHER
10	*	09.236.01	PLASTIC PTO GUARD
11	1	41768.06	BRACKET - Rear Mount Build
11	1	41768.07	BRACKET - Front Mount Build
12	2	03.007.06	BEARING
13	1	41.258.01	SPACER
14	1	09.264.01	SPACER
15	1	05.264.24	SETSCREW
15	1	05.282.03	SPRING WASHER
15	*	41730.01	SHAFT - PULLEY/PTO
16	1	05.264.34	SETSCREW
16	1	05.282.04	SPRING WASHER
16	*	09.263.01	COLLAR - CLAMP

* Main part in group - related parts have same reference number

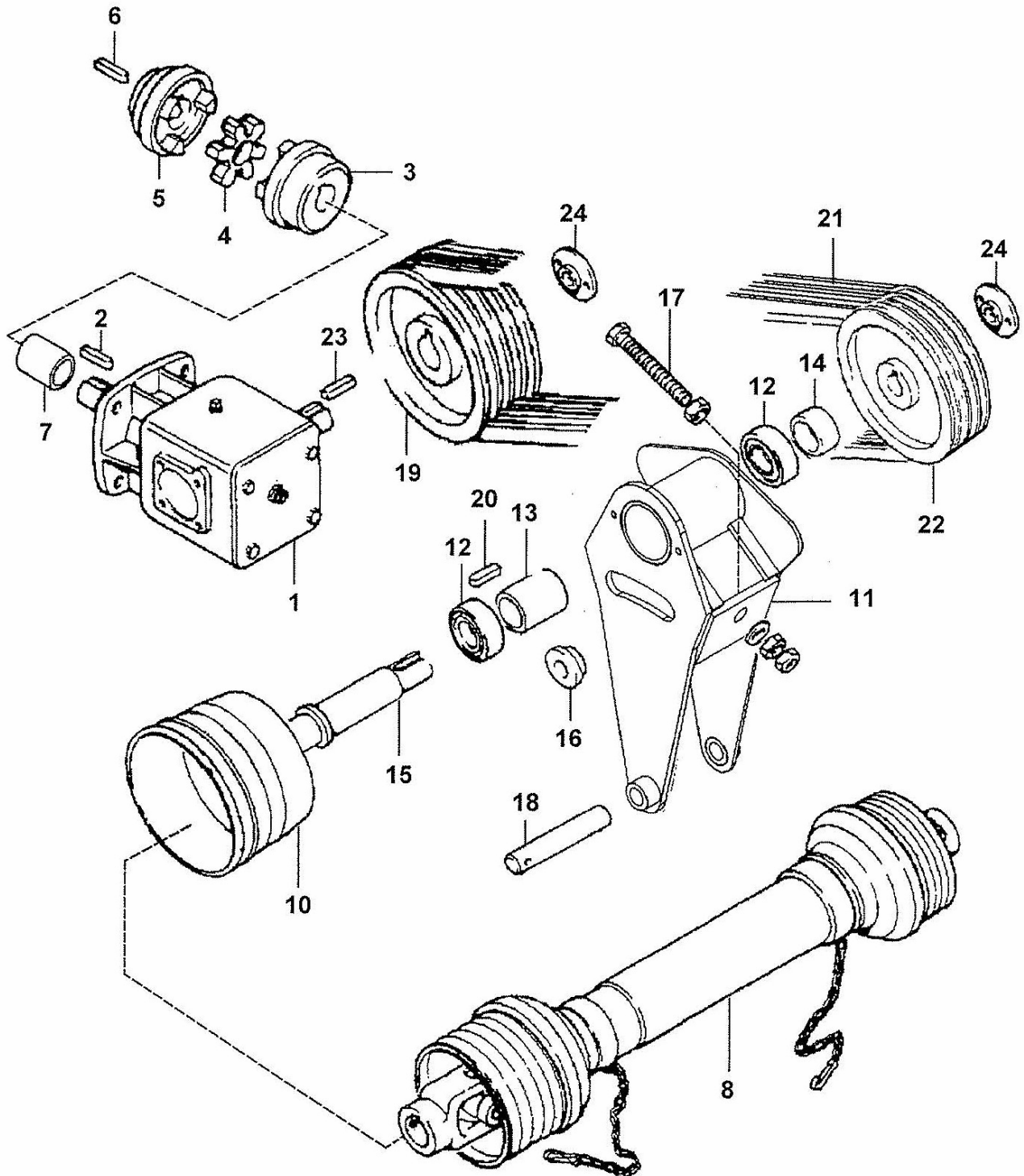
...continued

GEARBOX ASSEMBLIES

Modules:

74.993.01 – R/H Rear Mount & R/H Front Mount (ACW) Builds

74.993.02 – R/H Front Mount (CW) Build

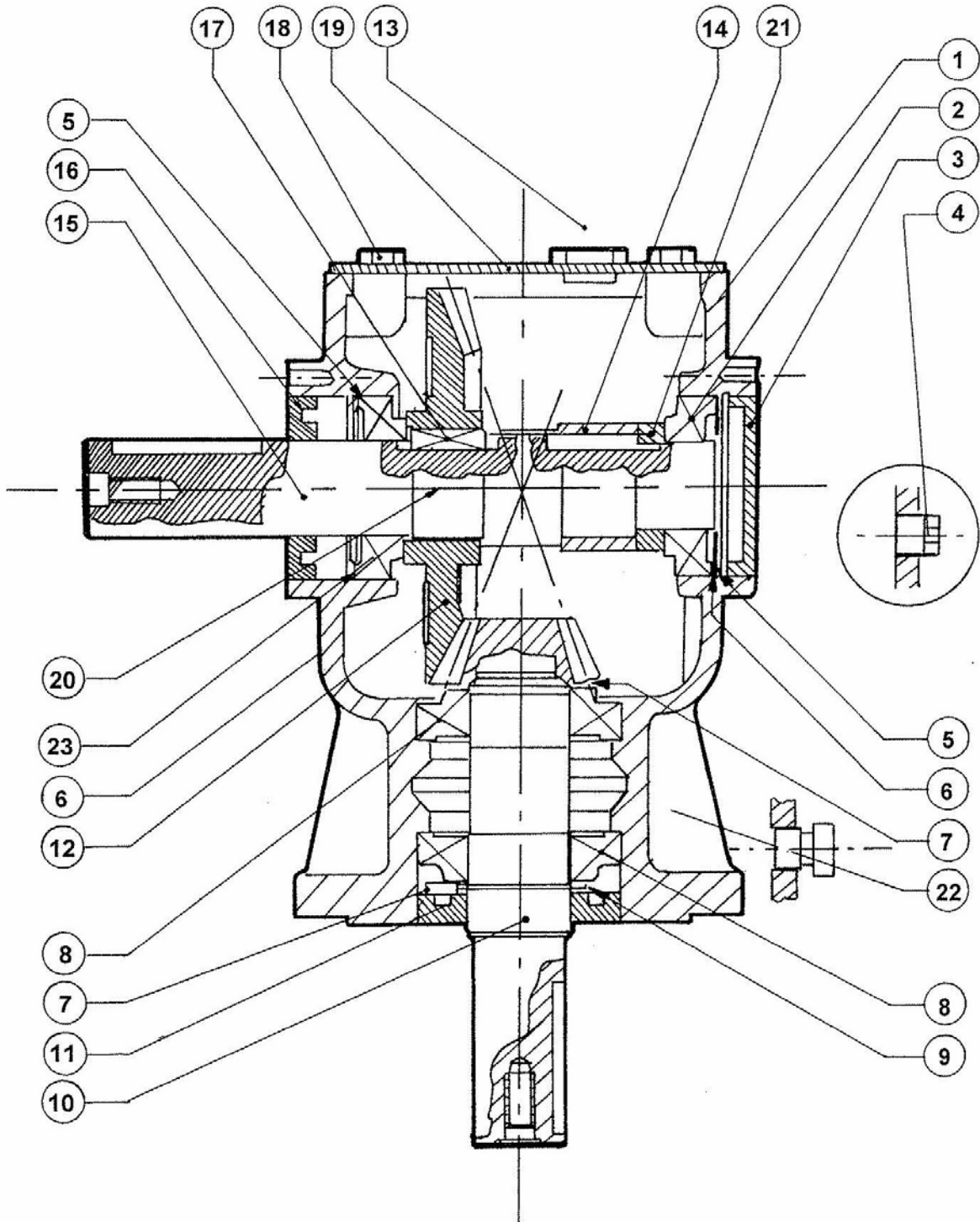


GEARBOX ASSEMBLIES

REF	QTY.	PART No.	DESCRIPTION
17	4	05.281.04	FLAT WASHER
17	3	05.286.04	NUT
17 *	1	41769.01	ADJUSTMENT BOLT
18 *	1	03.653.66	PIN
18	1	05.201.07	TENSION PIN
18	1	05.264.11	SETSCREW
18	1	05.281.02	FLAT WASHER
18	1	05.282.02	SPRING WASHER
19 *	1	41.245.01	PULLEY
19	1	05.388.01	SOCKET GRUBSCREW
20	1	05.960.03	KEY
21	4	05.299.51	BELT
22 *	1	41.244.01	PULLEY
22	1	05.388.01	SOCKET GRUBSCREW
23	1	05.960.22	KEY
24	4	05.264.02	SETSCREW
24	4	05.282.01	SPRING WASHER
24 *	2	09.297.01	WASHER

* Main part in group - related parts have same reference number

GEARBOX COMPONENTS



GEARBOX COMPONENTS

REF	QTY.	PART No.	DESCRIPTION
1	1	09.250.31	CASING
2	2	09.250.32	BEARING
3	1	09.250.33	CAP
4	1	09.250.34	PLUG
5	2	09.250.35	SNAP RING
6	1	09.250.36	SHIM SET
7	1	09.250.37	SHIM SET
8	2	09.250.38	BEARING
9	1	09.250.39	SNAP RING
10	1	09.250.40	PINION SHAFT
11	1	09.250.41	OIL SEAL
12	1	09.250.42	GEAR
13	1	09.250.52	GAS PLUG
14	1	09.250.44	SPACER
15	1	09.250.45	SHAFT
16	1	09.250.46	OIL SEAL
17	1	09.250.47	PARALLEL KEY
18	4	09.250.48	BOLT
19	1	09.250.49	COVER
20	1	09.250.50	PLATE
21	1	09.250.51	SPACER
22	1	09.250.53	GAS BREATHER
23	1	09.250.54	BEARING

Models: TA1600 / TA2000

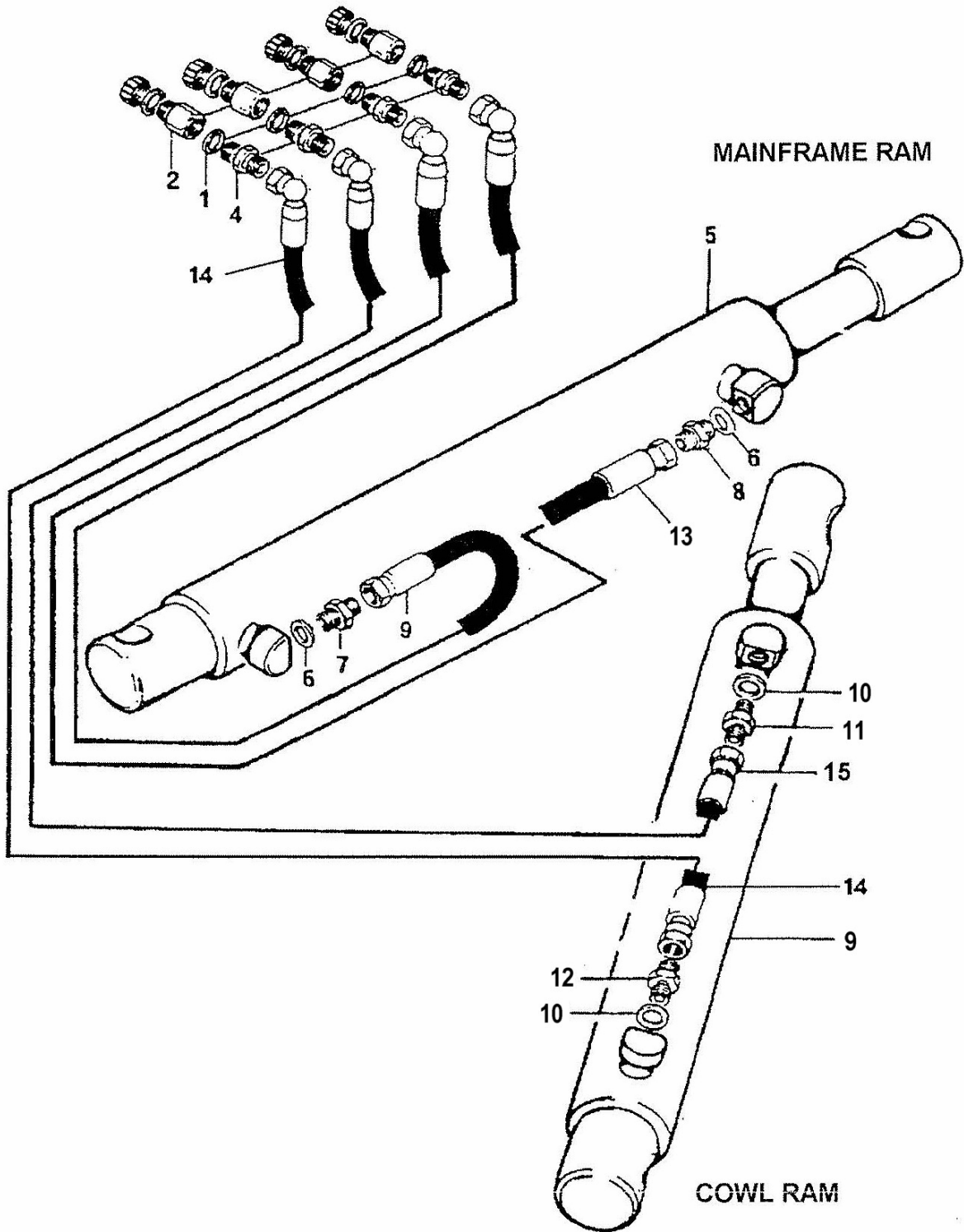


HYDRAULIC RAMS & HOSE KIT

Modules:

74.984.03 – Rams Assembly

72.487.01 – Hose Kit



HYDRAULIC RAMS & HOSE KIT

REF	QTY.	PART No.	DESCRIPTION
		74.984.03	HYDRAULIC RAMS ASSEMBLY
1	4	05.290.05	BONDED SEAL
2	4	05.146.01	QUICK RELEASE COUPLING
4	4	01.099.03	ADAPTOR
5 *	1	48200.01	RAM ASSEMBLY
6	2	05.290.04	BONDED SEAL
7	1	46518.12	RESTRICTOR
8	1	46518.08	RESTRICTOR
9	2	05.953.01	GREASE NIPPLE
9 *	1	09.993.04	RAM ASSEMBLY
10	2	05.290.04	BONDED SEAL
11	1	46518.16	RESTRICTOR
12	1	01.099.01	ADAPTOR
		72.487.01	HOSE KIT
13	1	10.002.34	HOSE - 1/4" BSP ST/90 S.SEAL x 2400mm
14	1	10.002.39	HOSE - 1/4" BSP ST/90 S.SEAL x 2900mm
15	1	10.002.44	HOSE - 1/4" BSP ST/90 S.SEAL x 3400mm

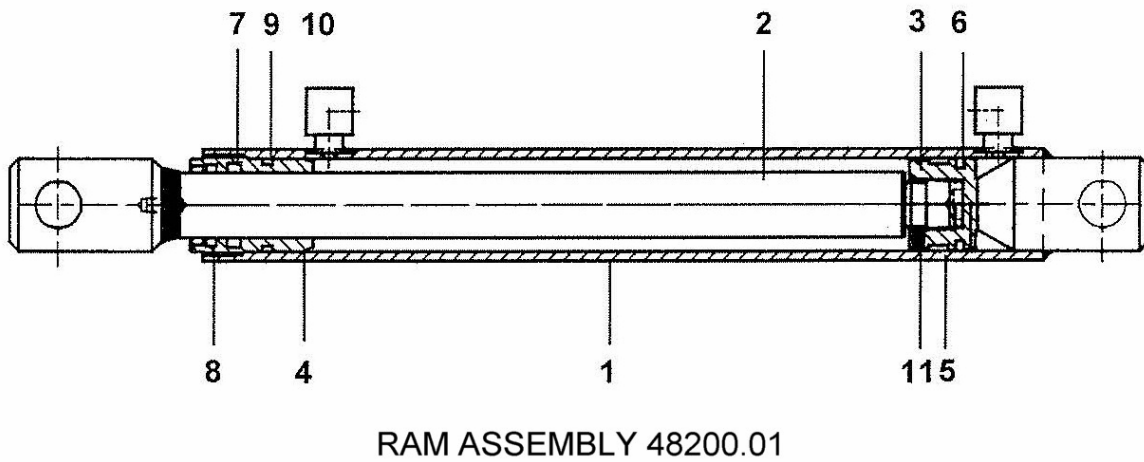
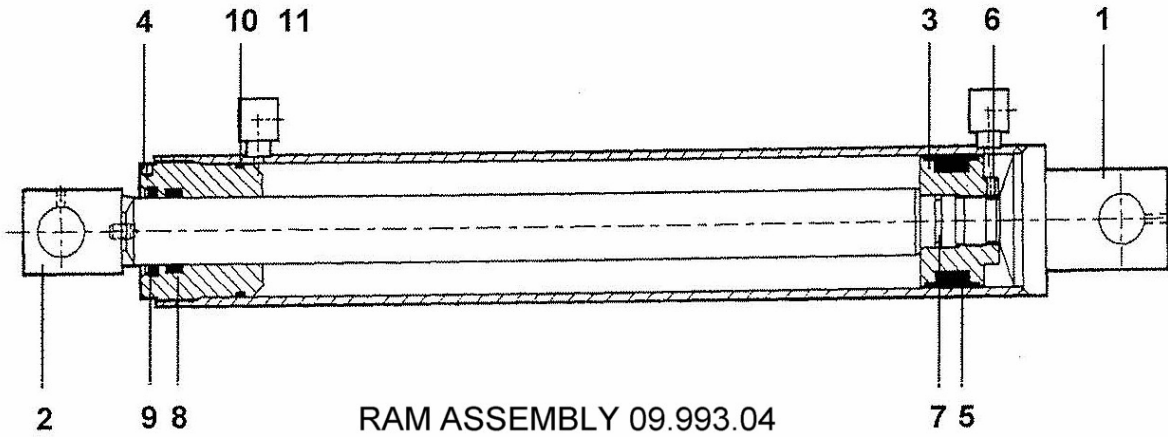
* Main part in group - related parts have same reference number

HYDRAULIC RAM ASSEMBLIES

Modules:

09.993.04 – Ram Assembly

48200.01 – Ram Assembly





HYDRAULIC RAM ASSEMBLIES

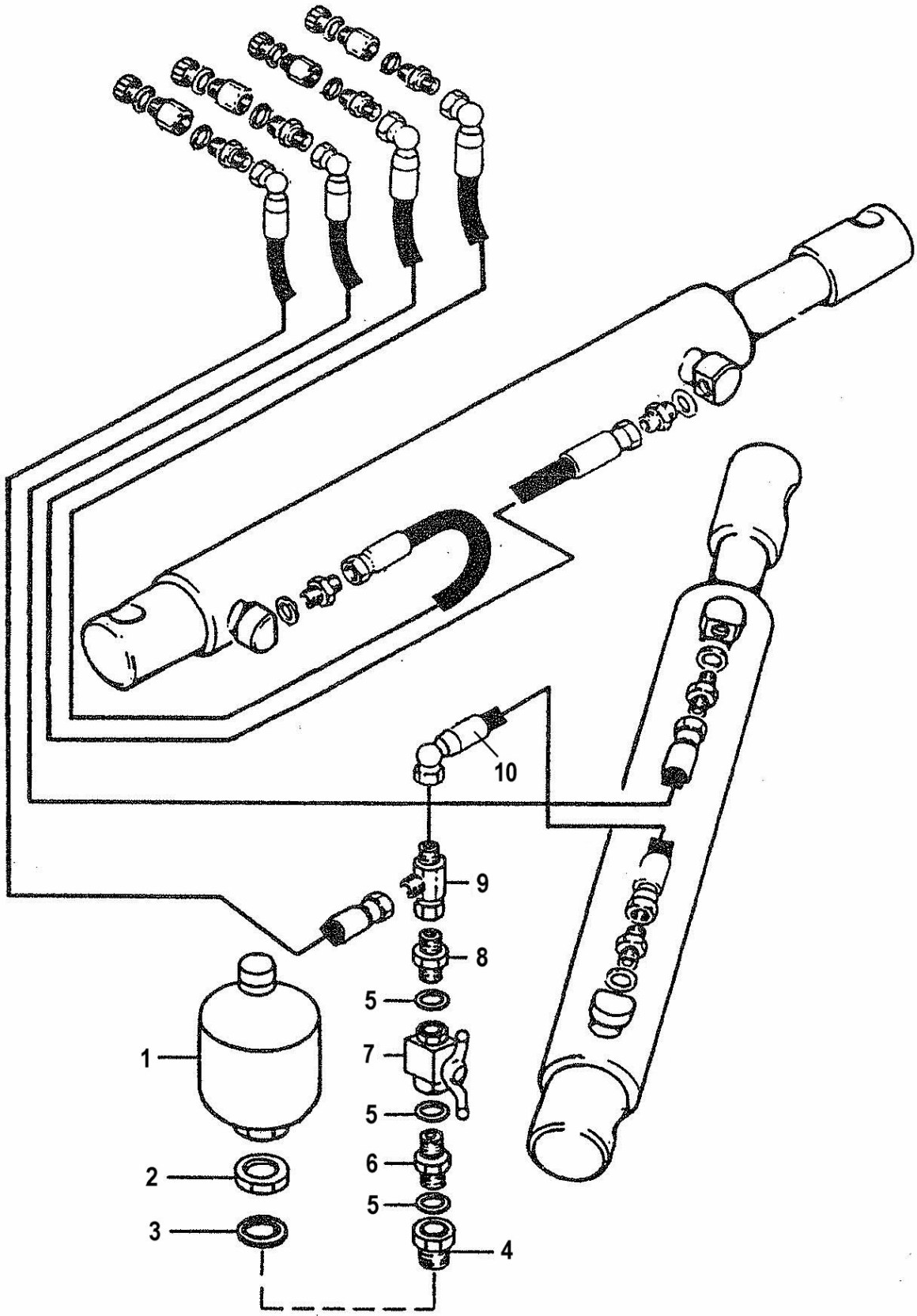
REF	QTY.	PART No.	DESCRIPTION
		09.993.04	RAM ASSEMBLY
1	1	09.993.64	CYLINDER BARREL
2	1	09.993.67	PISTON ROD
3	1	71.35 004	PISTON
4	1	09.993.59	GLAND HOUSING
5	1	86 38 740	PISTON SEAL
6	1	93 63 023	GRUBSCREW
7	1	86 00 119	O RING
8	1	86 29 204	ROD SEAL
9	1	86 29 205	SCRAPER RING
10	1	87 00 740	O RING
11	1	87 09 740	AE RING
12	2	09 01 161	GREASER
		09.993.01	SEAL KIT
		41.042.03	RAM ASSEMBLY
1	1	41.043.02	CYLINDER BARREL
2	1	41.044.02	PISTON ROD
3	1	75 60 095	PISTON
4	1	41.045.01	GLAND HOUSING
5	1	86 29 187	PISTON SEAL
6	1	85 29 188	GUIDE RING
7	1	86 29 210	GLAND SEAL
8	1	86 29 211	ROD WIPER
9	1	86 00 302	O RING
10	1	86 09 302	AE RING
11	1	93 63 023	GRUBSCREW
		41042.01	SEAL KIT

Models: TA1600 / TA2000



FLOAT KIT

Module:
76.006.01



**FLOAT KIT**

REF	QTY.	PART No.	DESCRIPTION
		76.006.01	FLOAT KIT
1	1	8126042	ACCUMULATOR
2	1	8126035	NUT
3	1	8650322	BONDED SEAL
4	1	8581284	ADAPTOR
5	2	0529004	BONDED SEAL
6	1	0512401	UNION
7	1	08.200.01	ISOLATING VALVE
8	1	0109901	ADAPTOR
9	1	0405610	TEE ADAPTOR
10	1	1000222	HOSE - 1/4" BSP x 1200mm

Models: TA1600 / TA2000

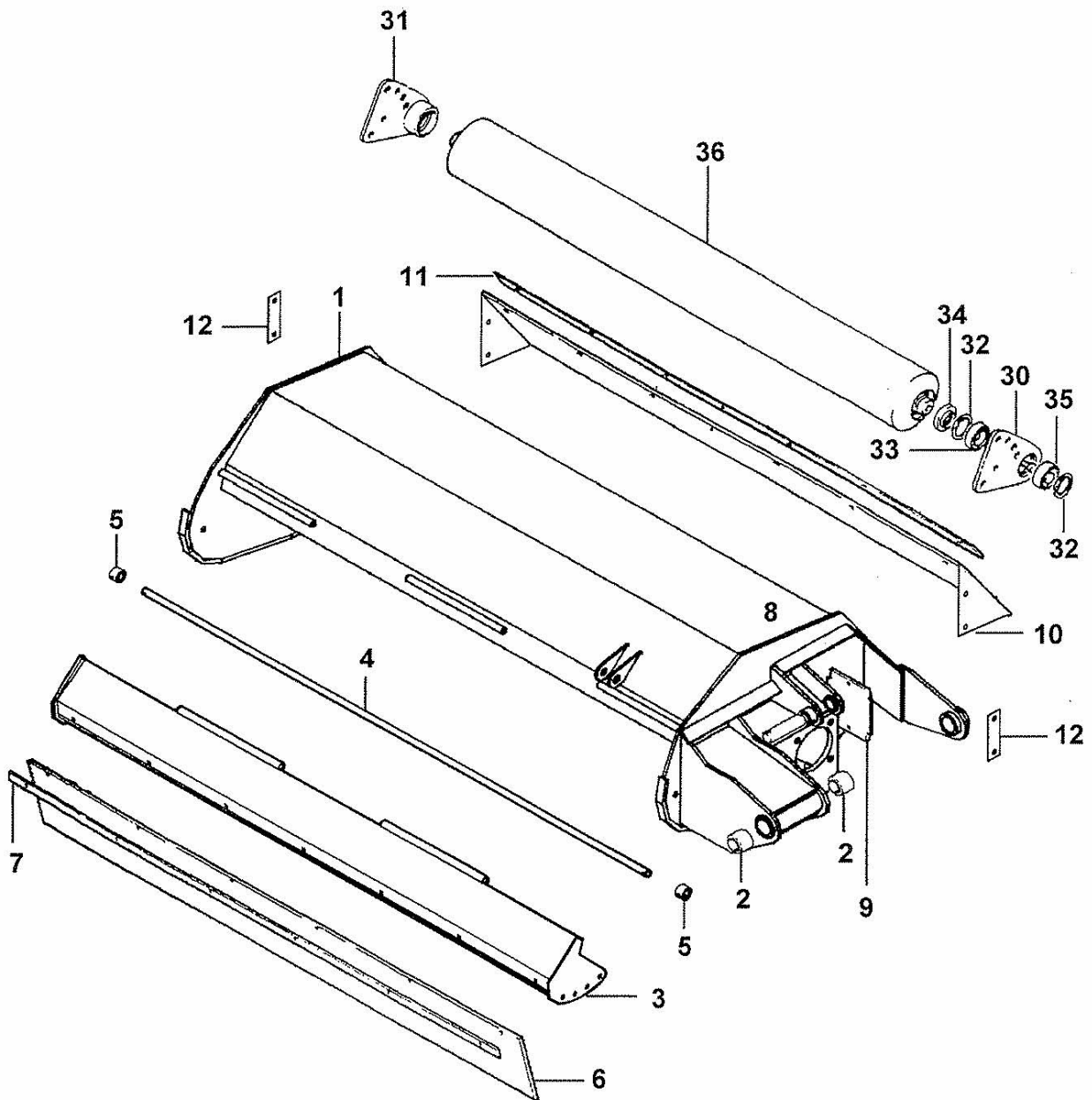


COWL ASSEMBLY – TA1600

Modules:

74.986.02 – TA1600 R/H Rear Mount Build

74.986.04 – TA1600 R/H Front Mount Build



COWL ASSEMBLY – TA1600

REF	QTY.	PART No.	DESCRIPTION
		74.986.02	COWL ASSEMBLY - TA1600 R/H REAR MOUNT
		74.986.04	COWL ASSEMBLY - TA1600 R/H FRONT MOUNT
1	4	03.886.01	STUD
1	4	05.281.04	FLAT WASHER
1	4	05.282.04	SPRING WASHER
1	4	05.286.04	NUT
1	*	42128.03	COWL - TA1600 R/H Rear Mount Build
1	*	42128.04	COWL - TA1600 R/H Front Mount Build
2	3	08.297.02	BUSH
3	2	05.282.03	SPRING WASHER
3	2	05.286.03	NUT
3	2	05.839.26	BOLT - CUP SQUARE
3	*	42125.01	GUARD
4	2	05.201.17	TENSION PIN
4	*	42129.04	PIN - PIVOT FRONT GUARD 1600
5	2	41436.02	SPACER - PIVOT FRONT GUARD
6	1	42126.01	GUARD - FLEXIBLE
7	*	10.120.01	BACKING STRIP
7	7	05.287.01	SELF LOCKING NUT
7	7	9293054	BOLT - CUP SQUARE
8	*	03.654.54	PIN
8	1	05.282.01	SPRING WASHER
8	1	05.286.01	NUT
8	1	05.291.06	BOLT
9	2	05.282.01	SPRING WASHER
9	2	30.068.95	SCREW
9	*	41.070.01	COVER - COWL DRIVE
10	1	42127.01	GUARD - FLEXIBLE
11	7	05.287.01	SELF-LOCKING NUT
11	*	10.120.01	BACKING STRIP
11	7	9293054	BOLT - CUP SQUARE
12	4	05.282.03	SPRING WASHER
12	4	05.286.03	NUT
12	4	05.839.26	BOLT - CUP SQUARE
12	*	41418.01	CLAMP - TA1600 R/H Rear Mount Build
12	*	41418.02	CLAMP - TA1600 R/H Front Mount Build

* Main part in group - related parts have same reference number

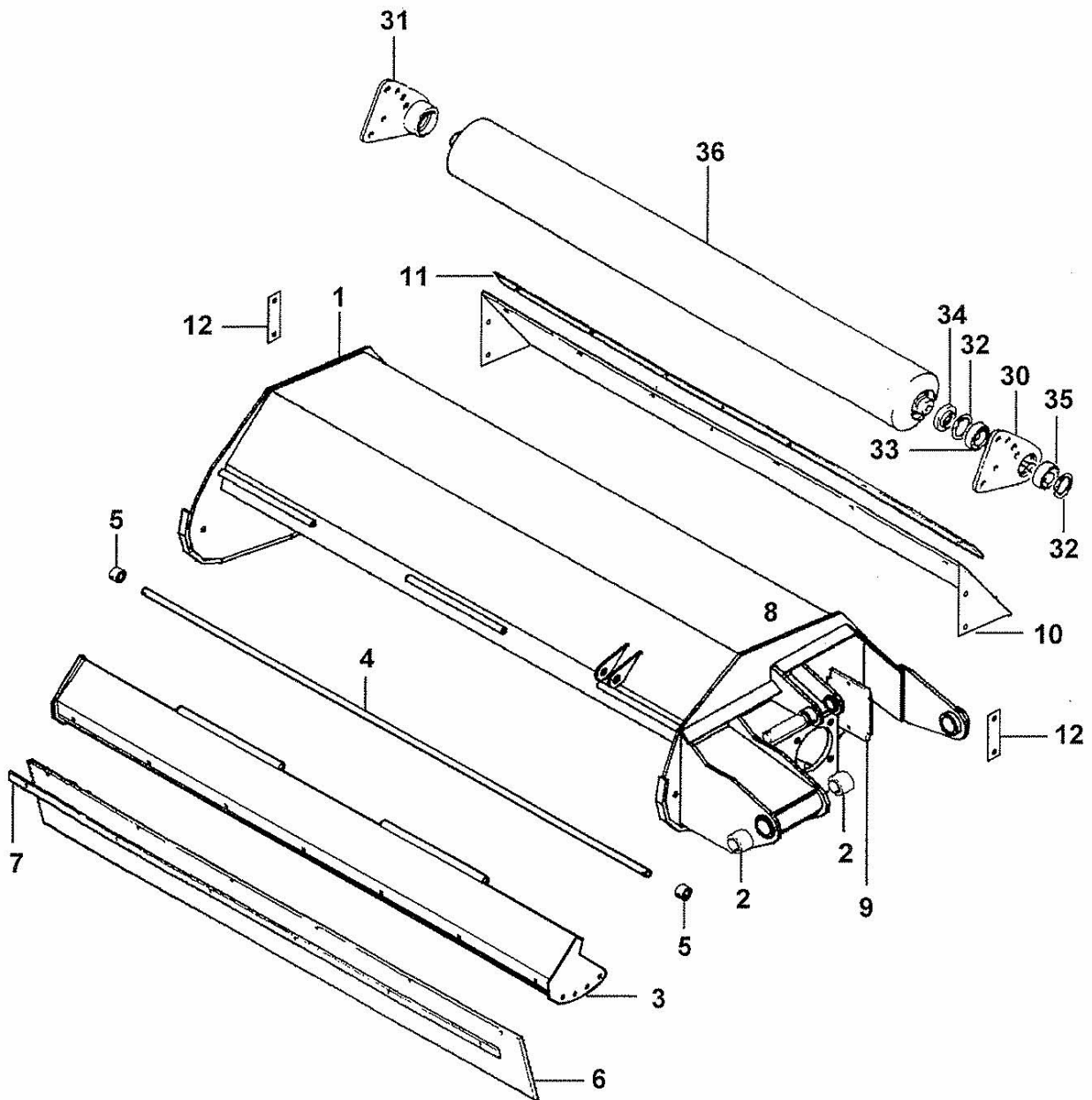
Models: TA1600 / TA2000



COWL ASSEMBLY – TA2000

Module:

74.986.03 – TA2000 R/H Rear Mount Build



COWL ASSEMBLY – TA2000

REF	QTY.	PART No.	DESCRIPTION
		74.986.03	COWL ASSEMBLY - TA2000 R/H REAR MOUNT
1	4	03.886.01	STUD
1	4	05.281.04	FLAT WASHER
1	4	05.282.04	SPRING WASHER
1	4	05.286.04	NUT
1 *	1	42128.02	COWL - TA2000 R/H Rear Mount Build
2	3	08.297.02	BUSH
3	2	05.282.03	SPRING WASHER
3	2	05.286.03	NUT
3	2	05.839.26	BOLT - CUP SQUARE
3 *	1	42143.01	GUARD
4	2	05.201.17	TENSION PIN
4 *	1	42129.05	PIN - PIVOT FRONT GUARD 2000
5	2	41436.02	SPACER - PIVOT FRONT GUARD
6	1	42126.02	GUARD - FLEXIBLE
7 *	1	10.120.01	BACKING STRIP
7	8	05.287.01	SELF LOCKING NUT
7	8	9293054	BOLT - CUP SQUARE
8 *	1	03.654.54	PIN
8	1	05.282.01	SPRING WASHER
8	1	05.286.01	NUT
8	1	05.291.06	BOLT
9	2	05.282.01	SPRING WASHER
9	2	30.068.95	SCREW
9 *	1	41.070.01	COVER - COWL DRIVE
10	1	42127.01	GUARD - FLEXIBLE
11	8	05.287.01	SELF-LOCKING NUT
11 *	1	10.120.01	BACKING STRIP
11	8	9293054	BOLT - CUP SQUARE
12	4	05.282.03	SPRING WASHER
12	4	05.286.03	NUT
12	4	05.839.26	BOLT - CUP SQUARE
12 *	2	41418.01	CLAMP - TA2000 R/H Rear Mount Build

* Main part in group - related parts have same reference number

Models: TA1600 / TA2000

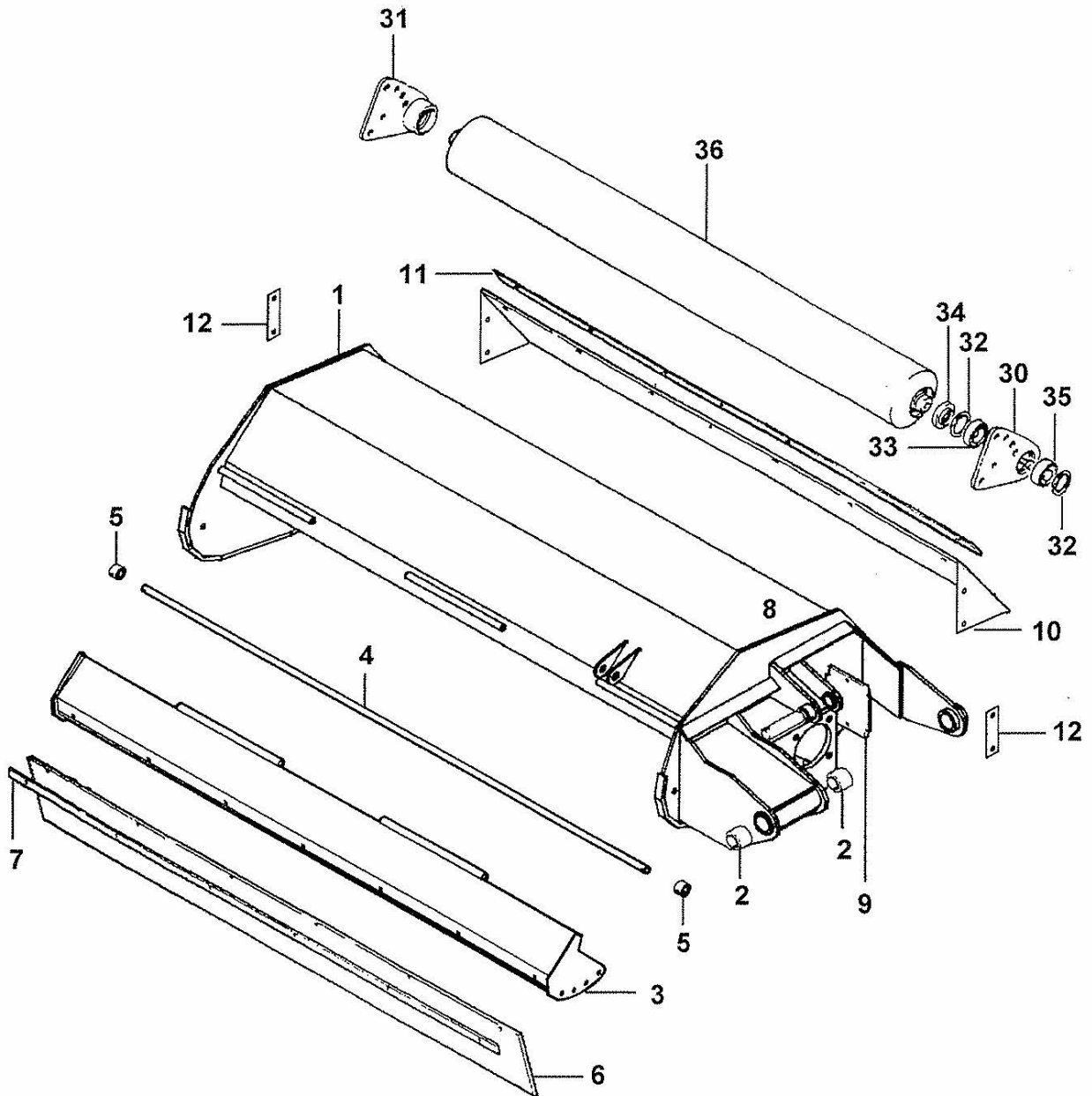


ROLLER ASSEMBLIES – TA1600

Modules:

74.985.02 – TA1600 Rear Mount Build

74.985.04 – TA1600 Front Mount Build



ROLLER ASSEMBLIES – TA1600

REF	QTY.	PART No.	DESCRIPTION
		74.985.02	ROLLER ASSEMBLY - TA1600 REAR MOUNT
		74.985.04	ROLLER ASSEMBLY - TA1600 FRONT MOUNT
30	3	05.282.03	SPRING WASHER
30	3	05.286.03	NUT
30	2	05.839.34	BOLT - CUP SQUARE
30 *	1	42144.01	ROLLER BRACKET - TA1600 Rear Mount
30 *	1	42144.03	ROLLER BRACKET - TA1600 Front Mount
30	1	05.839.35	BOLT - CUP SQUARE
31	3	05.282.03	SPRING WASHER
31	3	05.286.03	NUT
31	3	05.625.10	CAPSCREW
31 *	1	42144.02	ROLLER BRACKET
32	4	05.959.05	CIRCLIP - INTERNAL
33	2	42954.01	BEARING
34	2	04.164.04	SEAL
35	4	05.953.01	GREASE NIPPLE
35 *	2	41851.01	CAP - BEARING RETAINER
36	2	05.234.01	WASHER
36	2	05.282.03	SPRING WASHER
36	2	05.625.10	CAPSCREW
36 *	1	42955.08	ROLLER

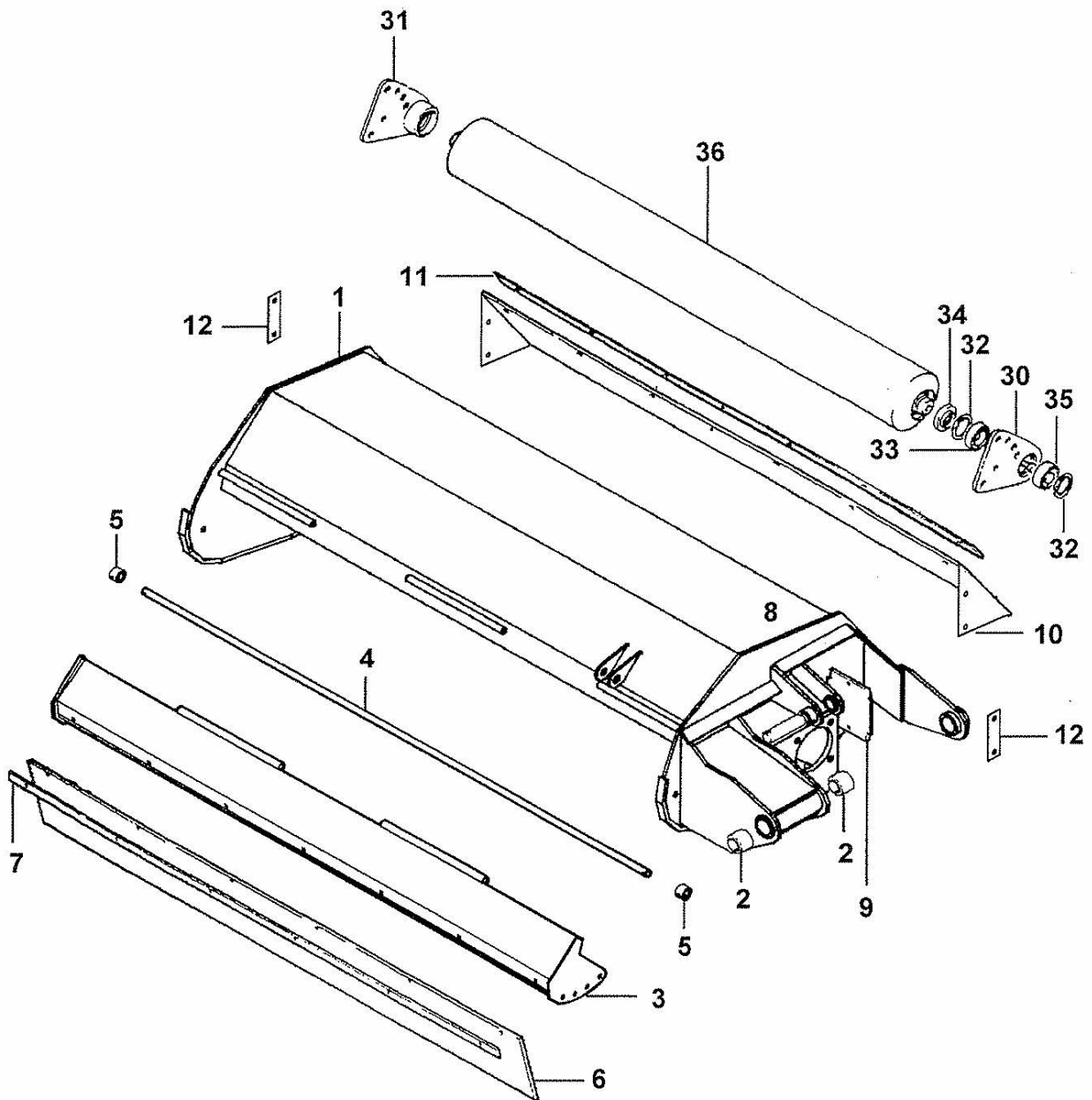
* Main part in group - related parts have same reference number

Models: TA1600 / TA2000



ROLLER ASSEMBLY – TA2000

Module:
74.985.03 – TA2000 Rear Mount Build



ROLLER ASSEMBLY – TA2000

REF	QTY.	PART No.	DESCRIPTION
		74.985.03	ROLLER ASSEMBLY - TA2000 REAR MOUNT
30	3	05.282.03	SPRING WASHER
30	3	05.286.03	NUT
30	2	05.839.34	BOLT - CUP SQUARE
30 *	1	42144.01	ROLLER BRACKET - TA2000 Rear Mount
30	1	05.839.35	BOLT - CUP SQUARE
31	3	05.282.03	SPRING WASHER
31	3	05.286.03	NUT
31	3	05.625.10	CAPSCREW
31 *	1	42144.02	ROLLER BRACKET
32	4	05.959.05	CIRCLIP - INTERNAL
33	2	42954.01	BEARING
34	2	04.164.04	SEAL
35	4	05.953.01	GREASE NIPPLE
35 *	2	41851.01	CAP - BEARING RETAINER
36	2	05.234.01	WASHER
36	2	05.282.03	SPRING WASHER
36	2	05.625.10	CAPSCREW
36 *	1	42955.07	ROLLER

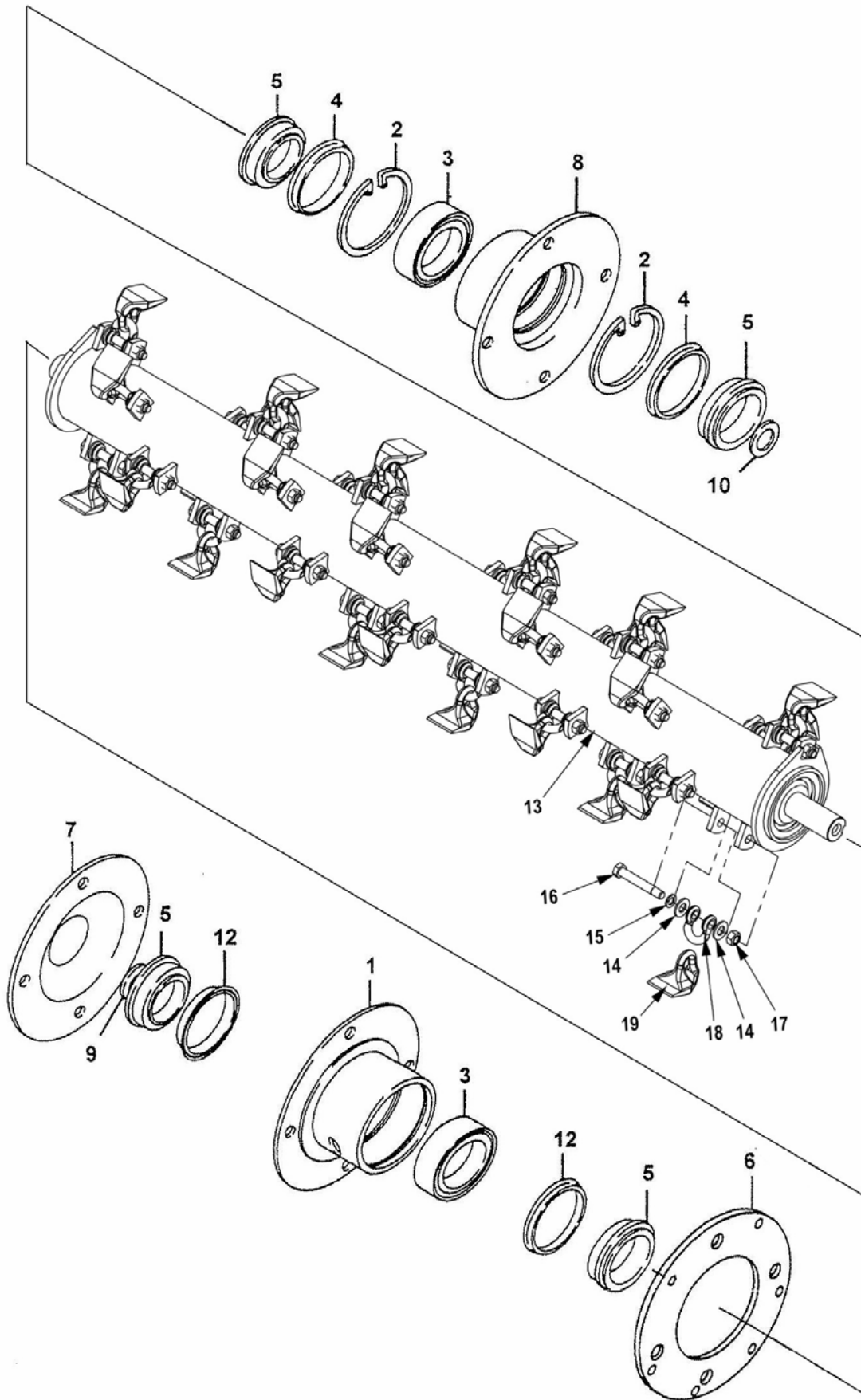
* Main part in group - related parts have same reference number

ROTOR & BEARING – TA1600

Modules:

21752.01 – TA1600 Rotor Assembly

74.994.01 – Bearing Assembly



ROTOR & BEARING – TA1600

REF	QTY.	PART No.	DESCRIPTION
		74.994.01	BEARING ASSEMBLY - ALL BUILDS
1 *	1	04.268.02	HOUSING BEARING
1	4	05.264.24	SETSCREW
1	4	05.282.03	SPRING WASHER
1	4	05.286.03	NUT
1	1	05.953.03	GREASE NIPPLE
2	2	05.959.07	CIRCLIP - INTERNAL
3	2	04.163.04	BEARING
4	2	06.909.01	SPACER SEAL
5	4	06.910.01	COLLAR SEAL
6	5	05.264.23	SETSCREW
6	5	05.282.03	SPRING WASHER
6	5	05.286.03	NUT
6 *	1	41.238.01	PLATE
7	1	00.876.02	BEARING COVER
8	4	05.264.24	SETSCREW
8	4	05.282.03	SPRING WASHER
8	4	05.286.03	NUT
8 *	1	41.240.01	BEARING HOUSING
9 *	1	04.252.01	WASHER
9	1	05.264.33	SETSCREW
9	1	05.283.04	SHAKEPROOF WASHER
10	1	05.345.08	SOCKET SCREW
10 *	1	41.257.01	WASHER
12	2	43242.01	SPACER
		21752.01	ROTOR SHAFT ASSEMBLY - TA1600 BUILD
13	1	21750.01	ROTOR - TA1600 (32 STATION)
14	64	05.281.04	FLAT WASHER
15	32	05.282.08	SPRING WASHER
16	32	05.775.10	SPECIAL BOLT
17	32	05.968.06	SELF-LOCKING NUT (THIN)
18	32	05.895.01	SHACKLE
19	32	09.902.01	FORGED BOOT FLAIL

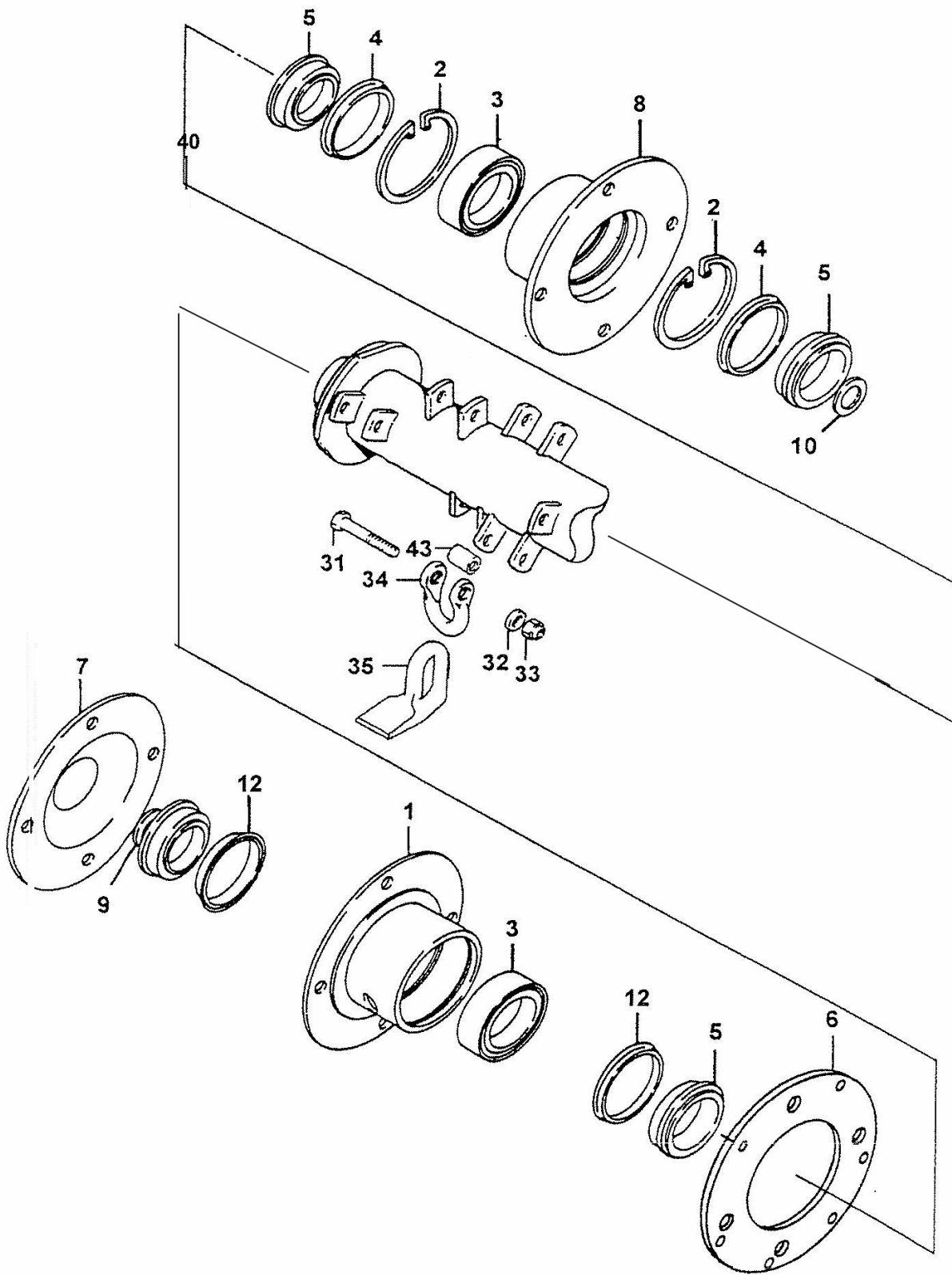
* Main part in group - related parts have same reference number

ROTOR & BEARING – TA2000

Modules:

74.994.01 – TA1600 Rotor Assembly

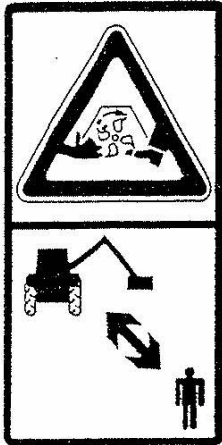
74.994.01 – Bearing Assembly



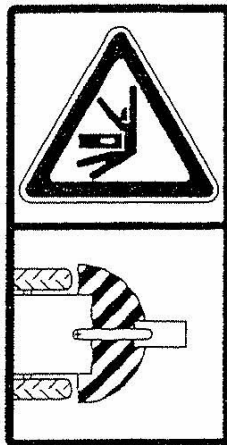
ROTOR & BEARING – TA2000

REF	QTY.	PART No.	DESCRIPTION
		74.994.01	BEARING ASSEMBLY - ALL BUILDS
1 *	1	04.268.02	HOUSING BEARING
1	4	05.264.24	SETSCREW
1	4	05.282.03	SPRING WASHER
1	4	05.286.03	NUT
1	1	05.953.03	GREASE NIPPLE
2	2	05.959.07	CIRCLIP - INTERNAL
3	2	04.163.04	BEARING
4	2	06.909.01	SPACER SEAL
5	4	06.910.01	COLLAR SEAL
6	5	05.264.23	SETSCREW
6	5	05.282.03	SPRING WASHER
6	5	05.286.03	NUT
6 *	1	41.238.01	PLATE
7	1	00.876.02	BEARING COVER
8	4	05.264.24	SETSCREW
8	4	05.282.03	SPRING WASHER
8	4	05.286.03	NUT
8 *	1	41.240.01	BEARING HOUSING
9 *	1	04.252.01	WASHER
9	1	05.264.33	SETSCREW
9	1	05.283.04	SHAKEPROOF WASHER
10	1	05.345.08	SOCKET SCREW
10 *	1	41.257.01	WASHER
12	2	43242.01	SPACER
		74.995.01	ROTOR SHAFT ASSEMBLY - TA2000 BUILD
		41.271.01	ROTOR ASSEMBLY c/o:
31	40	05.775.10	SPECIAL BOLT
32	40	05.282.08	SPRING WASHER
33	40	05.968.06	SELF-LOCKING NUT (FINE)
34	40	09.518.01	SHACKLE - LONG
35	40	09.902.01	FLAIL - FORGED
40	1	41.271.01	ROTOR SHAFT ASSEMBLY
43	40	41725.01	SPACER

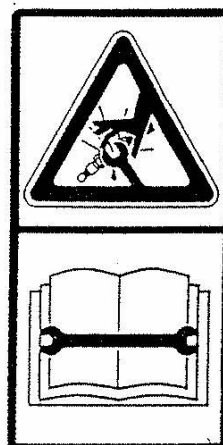
* Main part in group - related parts have same reference number



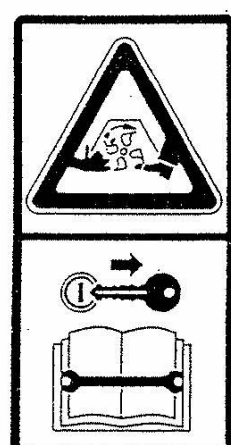
09.821.05



09.821.06



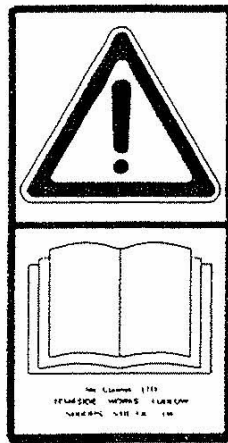
09.821.07



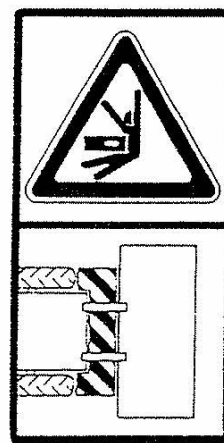
09.821.08



09.821.10



09.821.15



09.821.16



09.821.17



09.821.18



09.821.20



09.821.21

**DECAL KITS**

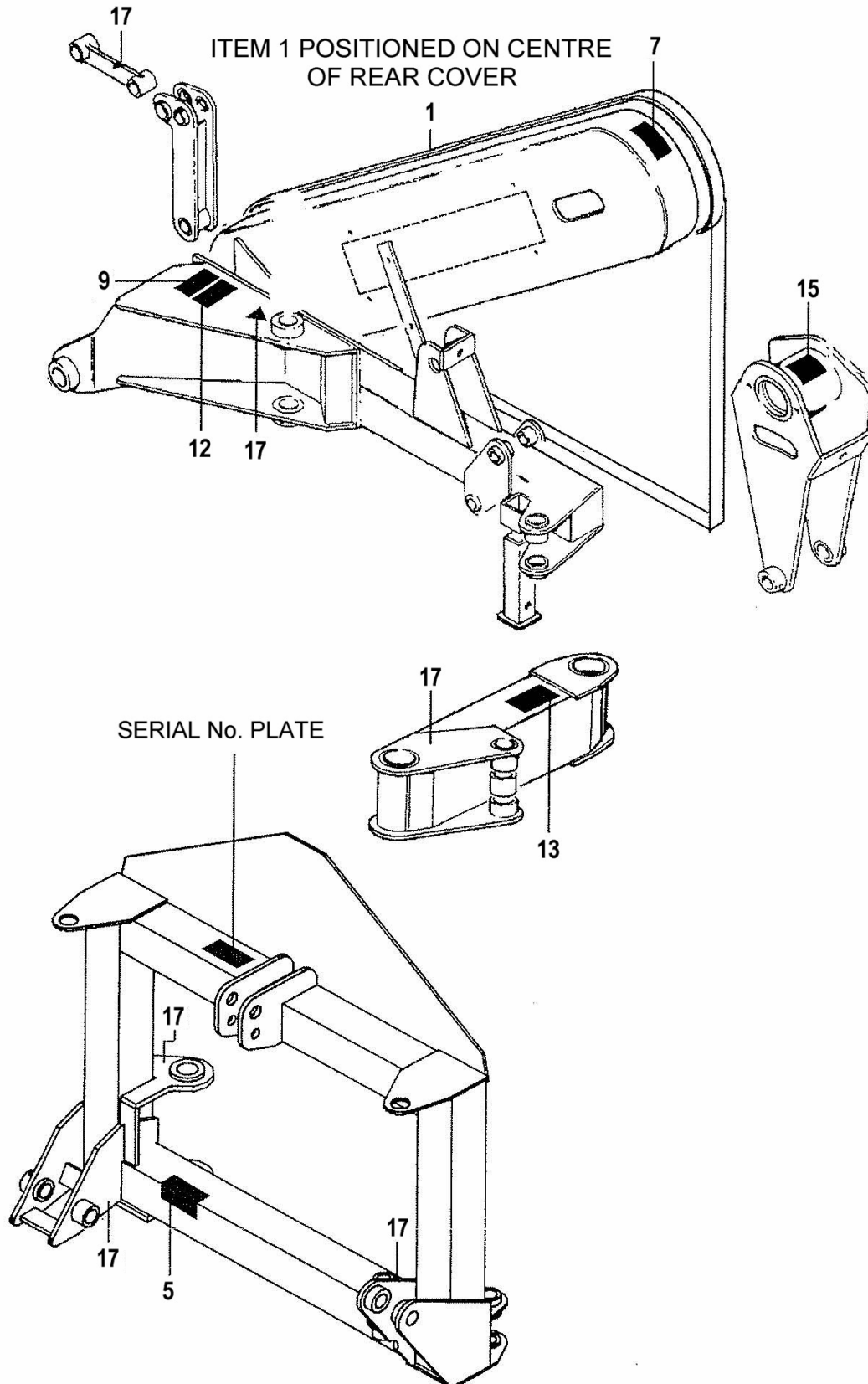
REF	QTY.	PART No.	DESCRIPTION
		74.738.03	DECALS - TA1600 BUILDS
		74.738.04	DECALS - TA2000 BUILDS
1	1	1290255	DECAL - McCONNEL (BLACK)
2	1	09.852.01	DECAL - ARM FLOAT
3	1	09.843.04	DECAL - LIFT POINT 750 KG
4	1	09.821.21	DECAL - FALLING WING
5	1	09.821.20	DECAL - SHAFT ENTANGLEMENT
6	1	09.821.18	DECAL - THROWN DEBRIS
7	1	09.821.17	DECAL - UNSUPPORTED MACHINE
8	1	09.821.16	DECAL - KEEP OUT ZONE
9	1	09.821.15	DECAL - READ INST.MAN.McCONNEL
10	1	09.821.10	DECAL - KEEP NUTS TIGHT
11	1	09.821.08	DECAL - SAFE WORKING ON HEAD
12	1	09.821.07	DECAL - RESIDUAL PRESSURE
13	1	09.821.06	DECAL - SLEW DANGER
14	1	09.821.05	DECAL - CUTTING HEAD DANGER
15	1	09.811.05	DECAL - MAX PTO SPEED 1000
16	4	09.810.02	DECAL - GREASE (40 HOURS)
17	9	09.810.01	DECAL - GREASE (8 HOURS)
18	2	1290467	DECAL - TA 1600
	2	1290468	DECAL - TA 2000

DECAL LOCATION

Modules:

74.738.03 – TA1600 Models

74.738.04 – TA2000 Models



**DECAL KITS**

REF	QTY.	PART No.	DESCRIPTION
		74.738.03	DECALS - TA1600 BUILDS
		74.738.04	DECALS - TA2000 BUILDS
1	1	1290255	DECAL - McCONNEL (BLACK)
2	1	09.852.01	DECAL - ARM FLOAT
3	1	09.843.04	DECAL - LIFT POINT 750 KG
4	1	09.821.21	DECAL - FALLING WING
5	1	09.821.20	DECAL - SHAFT ENTANGLEMENT
6	1	09.821.18	DECAL - THROWN DEBRIS
7	1	09.821.17	DECAL - UNSUPPORTED MACHINE
8	1	09.821.16	DECAL - KEEP OUT ZONE
9	1	09.821.15	DECAL - READ INST.MAN.McCONNEL
10	1	09.821.10	DECAL - KEEP NUTS TIGHT
11	1	09.821.08	DECAL - SAFE WORKING ON HEAD
12	1	09.821.07	DECAL - RESIDUAL PRESSURE
13	1	09.821.06	DECAL - SLEW DANGER
14	1	09.821.05	DECAL - CUTTING HEAD DANGER
15	1	09.811.05	DECAL - MAX PTO SPEED 1000
16	4	09.810.02	DECAL - GREASE (40 HOURS)
17	9	09.810.01	DECAL - GREASE (8 HOURS)
18	2	1290467	DECAL - TA 1600
	2	1290468	DECAL - TA 2000



McConnel Limited, Temeside Works, Ludlow, Shropshire SY8 1JL. England.
Telephone: 01584 873131. Facsimile: 01584 876463. www.mcconnel.com