

PM1713

**B315**  
**ARM MOWER**

PARTS MANUAL

ISSUE 1

# **SPARE PARTS MANUAL**

**FOR BEST PERFORMANCE....**

**USE ONLY BOMFORD SPARE PARTS**

To be assured of the latest design improvements purchase your genuine replacements from the original equipment manufacturer **BOMFORD Ltd.** through your local dealer or stockist.

Always quote machine type and serial number as well as the part number.

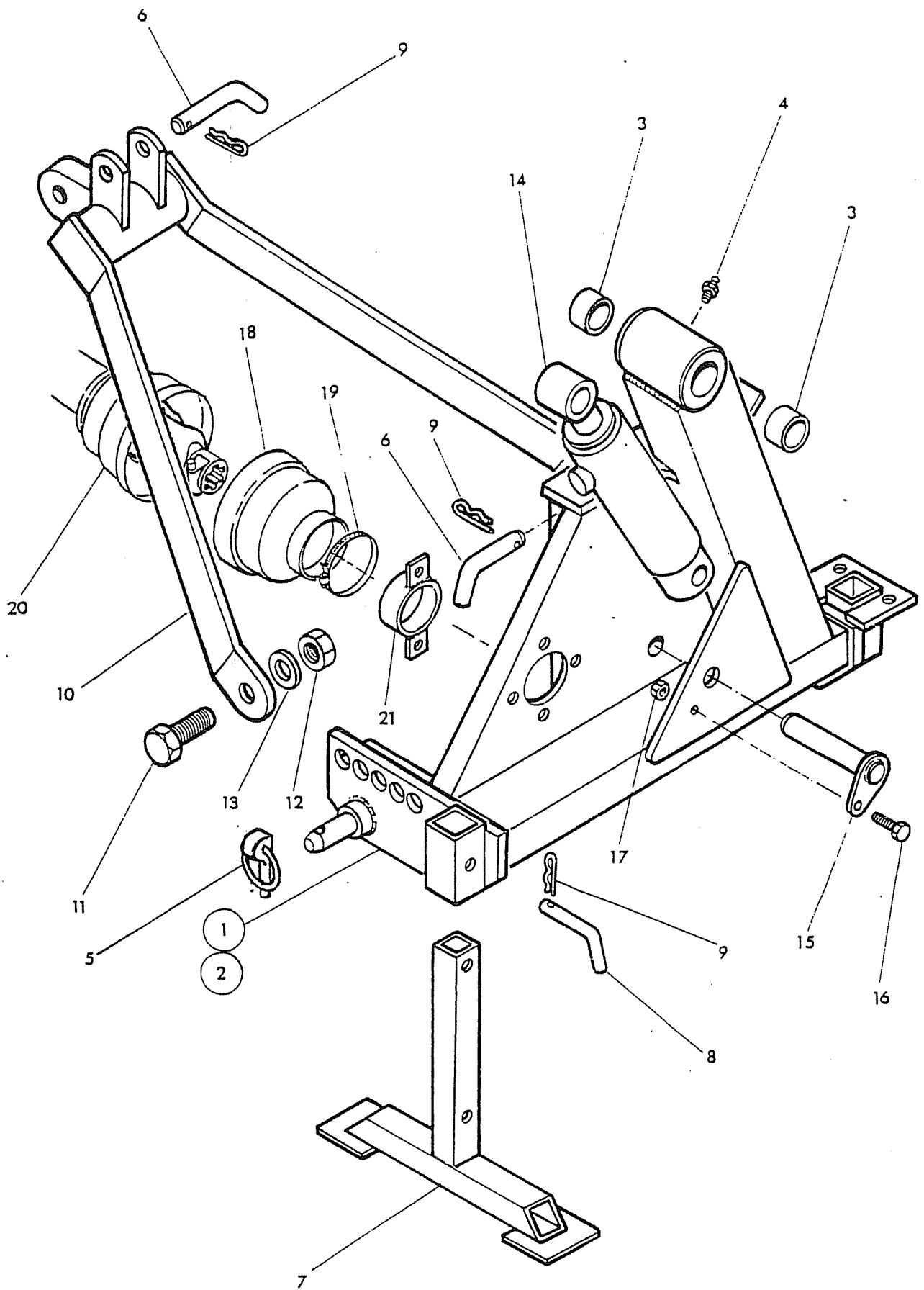
Design improvement may have altered some of the parts listed in this manual - The latest part will always be supplied when it is interchangeable with an earlier one.

## LIST OF CONTENTS

|                                      |         |
|--------------------------------------|---------|
| MAIN FRAME ETC.....                  | Page 1  |
| MAIN ARM & ROCKER.....               | Page 3  |
| STANDARD DIPPER ARM.....             | Page 5  |
| CONTROL MOUNTING ASSEMBLY.....       | Page 7  |
| CAB GUARD KIT.....                   | Page 8  |
| FLAIL HEAD CASING.....               | Page 9  |
| ROTORS, FLAILS & ROLLER.....         | Page 11 |
| CUTTERBAR DRIVE.....                 | Page 13 |
| CUTTERBAR ASSEMBLIES.....            | Page 15 |
| HOSE INSTALLATION Si machines.....   | Page 17 |
| HOSE INSTALLATION Ti machines.....   | Page 19 |
| CONTROL VALVE.....                   | Page 21 |
| ROTOR CONTROL VALVE (Ti only).....   | Page 23 |
| CONTROL UNIT AND CABLES.....         | Page 25 |
| GEARBOX/PUMP ASSY (Si only).....     | Page 27 |
| GEARBOX/PUMP ASSY (Ti only).....     | Page 29 |
| GEARBOX.....                         | Page 31 |
| HYDRAULIC TANK ASSY.....             | Page 33 |
| LIFT FLOAT KIT - Optional extra..... | Page 35 |
| LIFT RAM.....                        | Page 37 |
| REACH RAM.....                       | Page 38 |
| BREAKAWAY RAM.....                   | Page 39 |
| ANGLING RAM.....                     | Page 40 |
| DECALS.....                          | Page 41 |

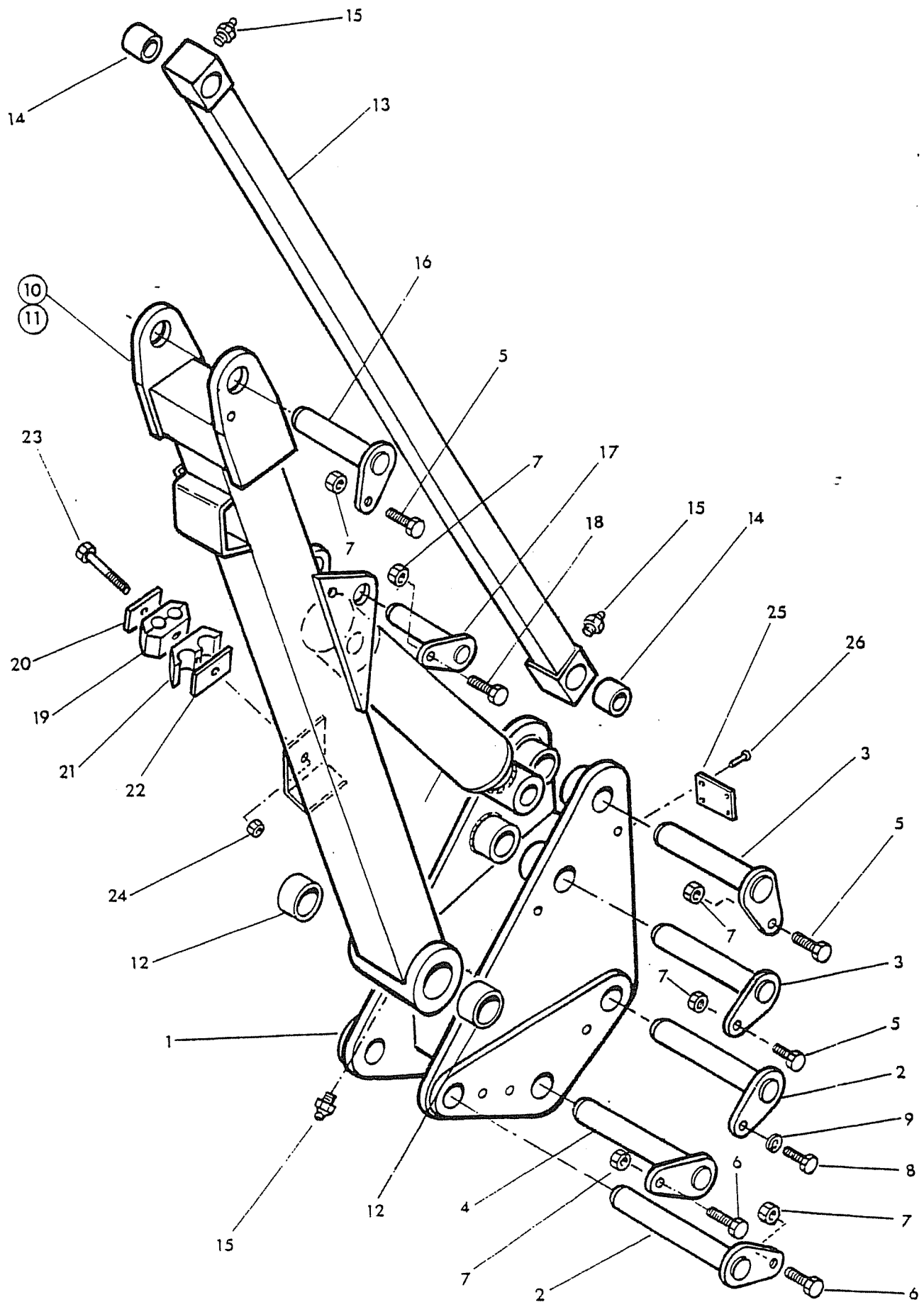
FRAME & STABILISER

**BOMFORD TURNER**



| Ref.                             | Part No.  | Qty | Description                    |
|----------------------------------|-----------|-----|--------------------------------|
| <b>MAIN FRAME AND STABILISER</b> |           |     |                                |
| 1                                | 41197.01  | 1   | Main frame L.Hand              |
| 2                                | 41197.02  | 1   | Main frame R.Hand - not illus. |
| 3                                | 71 01 134 | 2   | Bush                           |
| 4                                | 09 01 121 | 1   | Greaser                        |
| 5                                | 04 31 217 | 1   | Linch pin                      |
| 6                                | 71 92 026 | 2   | Top link pin                   |
| 7                                | 41203.01  | 2   | Stand leg                      |
| 8                                | 10 90 051 | 2   | Leg pin                        |
| 9                                | 04 31 105 | 4   | Spring cotter                  |
| 10                               | 41205.01  | 1   | Stabiliser                     |
| 11                               | 91 13 118 | 2   | Setscrew                       |
| 12                               | 91 13 008 | 2   | Self locking nut               |
| 13                               | 91 00 208 | 2   | Spring washer -                |
| 14                               | 41014.03  | 1   | Lift ram assy.                 |
| 15                               | 41267.01  | 1   | Pivot pin - lift ram base      |
| 16                               | 93 13 065 | 1   | Setscrew                       |
| 17                               | 91 43 005 | 1   | Self locking nut               |
| 18                               | 71.11.038 | 1   | Shaft guard                    |
| 19                               | 09 04 114 | 1   | Hose clip                      |
| 20                               | 71 14 289 | 1   | P.T.O. shaft                   |
| 21                               | 71 91 075 | 1   | Guard mounting collar          |

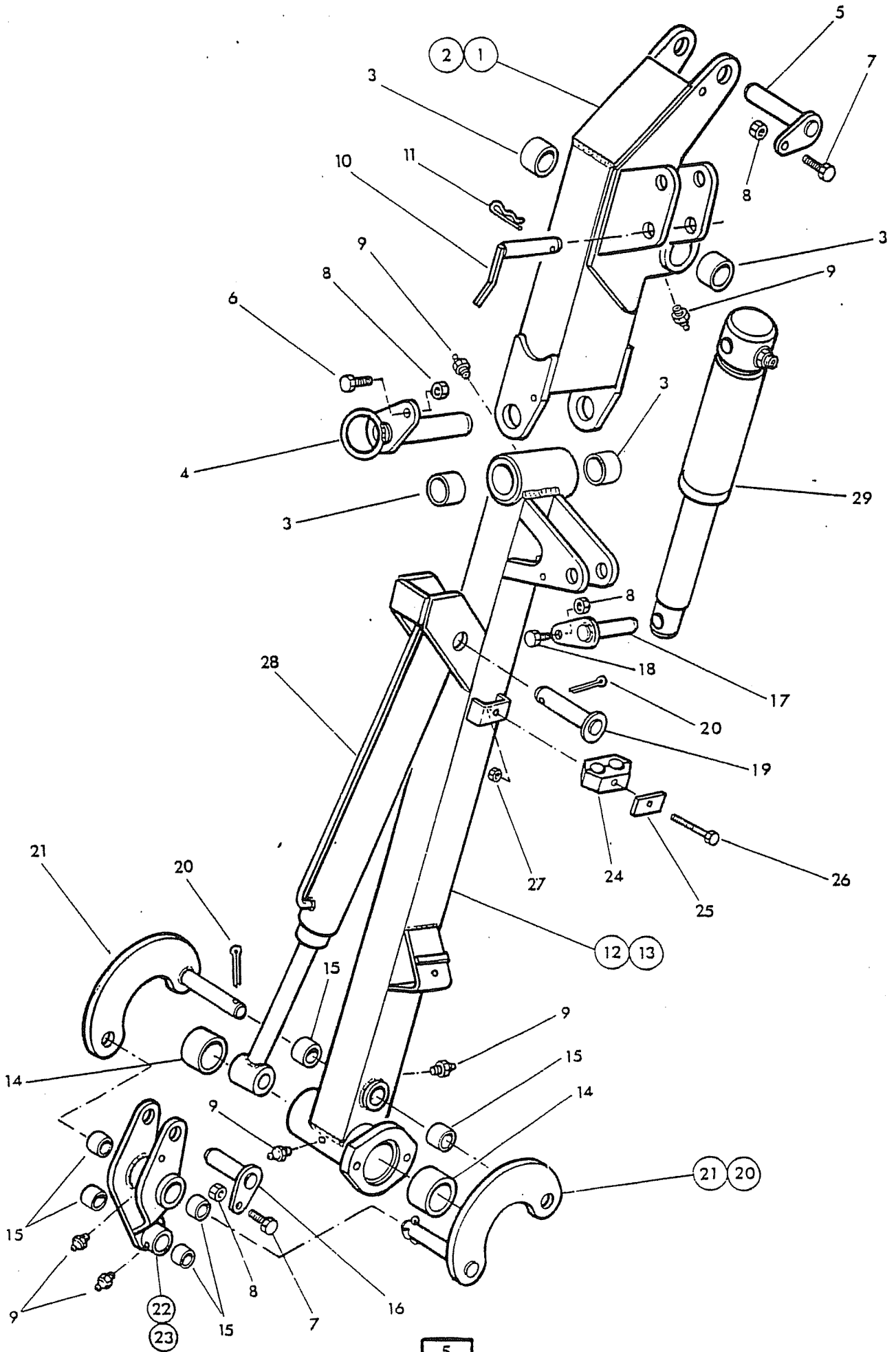
**MAIN ARM & ROCKER**



| Ref. Part No.              | Qty       | Description                    |
|----------------------------|-----------|--------------------------------|
| <b>MAIN ARM AND ROCKER</b> |           |                                |
| 1                          | 41198.01  | 1 Rocker                       |
| 2                          | 41268.01  | 1 Pin-rocker and main arm      |
| 3                          | 41267.02  | 1 Pin-link and reach ram rod   |
| 4                          | 41267.01  | 1 Pin - lift ram rod           |
| 5                          | 93 13 055 | 3 Setscrew                     |
| 6                          | 93 13 065 | 2 Setscrew                     |
| 7                          | 91 43 005 | 6 Self locking nut             |
| 8                          | 91 13 045 | 1 Setscrew                     |
| 9                          | 91 00 205 | 1 Spring washer                |
| 10                         | 41199.01  | 1 Main arm L.Hand              |
| 11                         | 41199.02  | 1 Main arm R.Hand - not illus. |
| 12                         | 71 01 134 | 2 Bush                         |
| 13                         | 41200.01  | 1 Tension link                 |
| 14                         | 71 05 050 | 2 Bush                         |
| 15                         | 09 01 121 | 3 Greaser - straight           |
| 16                         | 41268.01  | 1 Pivot pin - dipper           |
| 17                         | 41267.04  | 1 Pivot pin - reach ram base   |
| 18                         | 93 13 075 | 1 Setscrew                     |
| 19                         | 06.430.09 | 2 Hose clamp                   |
| 20                         | 06.418.03 | 2 Clamp plate                  |
| 21                         | 71 98 037 | 1 Hose clamp (1 pair)          |
| 22                         | 06.418.05 | 2 Clamp plate                  |
| 23                         | 92 13 204 | 2 Bolt                         |
| 24                         | 91 43 004 | 2 Self locking nut             |

DIPPER

**BOMFORD TURNER**

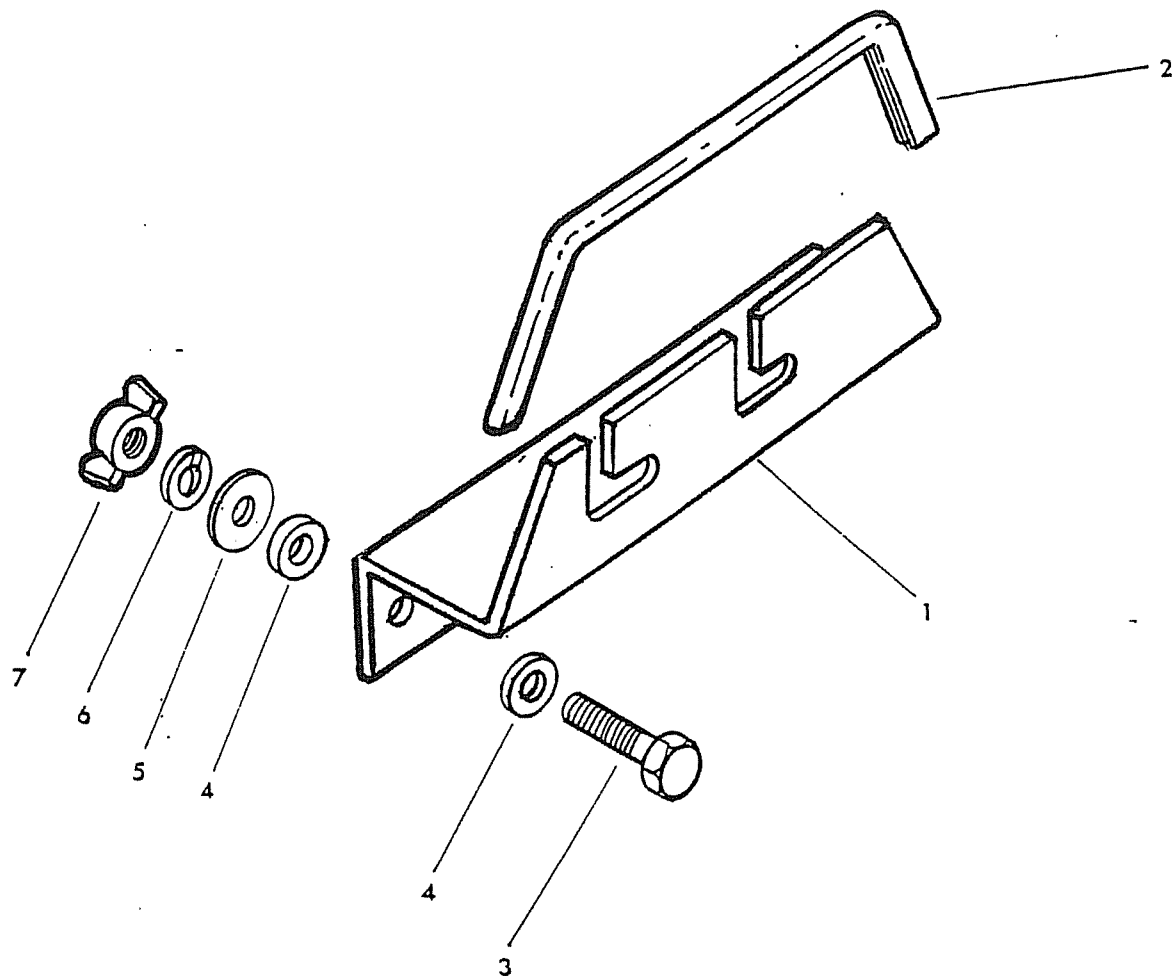




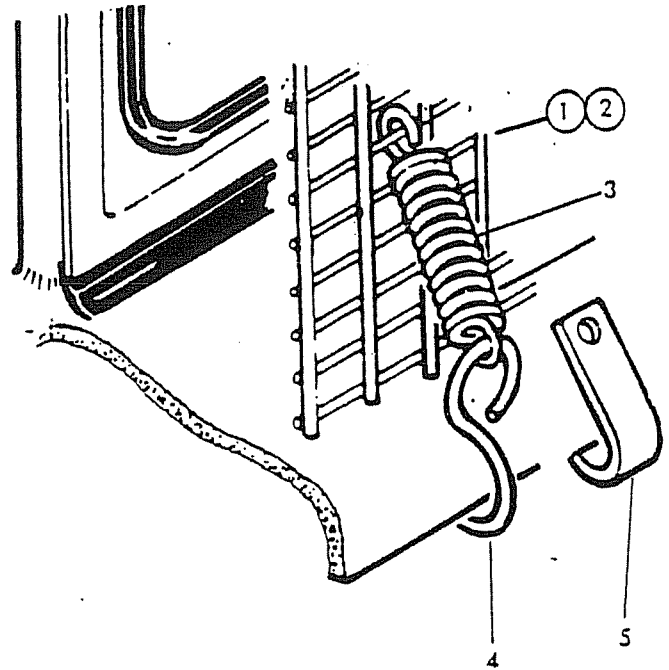
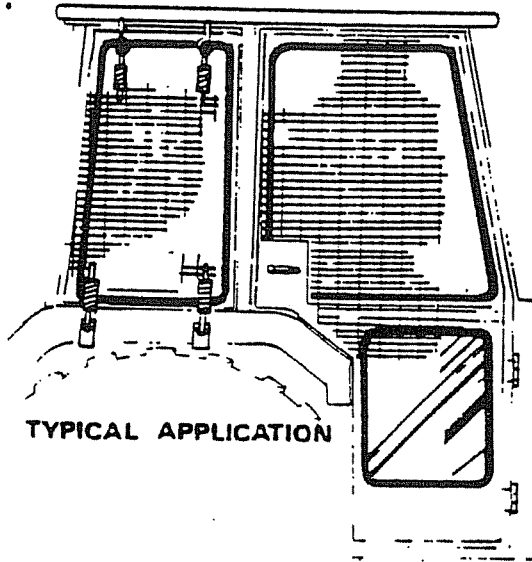
| Ref. Part No.                 | Qty       | Description                          |
|-------------------------------|-----------|--------------------------------------|
| <b>DIPPER ARM AND ANGLING</b> |           |                                      |
| 1                             | 41201.01  | 1 Dipper upper - L.Hand              |
| 2                             | 41201.02  | 1 Dipper upper - R.Hand - not illus. |
| 3                             | 71 01 134 | 4 Bush                               |
| 4                             | 41269.01  | 1 Pivot pin - dipper lower           |
| 5                             | 41267.03  | 1 Pivot pin - tension link           |
| 6                             | 93 13 075 | 1 Setscrew                           |
| 7                             | 93 13 055 | 2 Setscrew                           |
| 8                             | 91 43 005 | 4 Self locking nut                   |
| 9                             | 09 01 121 | 6 Greaser -- straight                |
| 10                            | 71 91 036 | 1 Pivot pin - breakaway ram base     |
| 11                            | 04 31 105 | 1 Spring cotter                      |
| 12                            | 41202.01  | 1 Dipper lower - L.Hand              |
| 13                            | 41202.02  | 1 Dipper lower - R.Hand - not illus. |
| 14                            | 10 90 001 | 2 Bush                               |
| 15                            | 72 14 060 | 6 Bush                               |
| 16                            | 41270.01  | 1 Pivot pin - angle ram rod          |
| 17                            | 71 91 037 | 1 Pivot pin - breakaway ram rod      |
| 18                            | 93 13 065 | 1 Setscrew                           |
| 19                            | 71 91 041 | 1 Pivot pin angle ram base           |
| 20                            | 95 01 406 | 3 Split pin                          |
| 21                            | 41206.01  | 2 Radius arm                         |
| 22                            | 41207.01  | 1 Slave link - L.Hand                |
| 23                            | 41207.02  | 1 Slave link - R.Hand - not illus.   |
| 24                            | 06.430.09 | 2 Hose clamp                         |
| 25                            | 06.418.03 | 2 Clamp plate                        |
| 26                            | 92 13 134 | 2 Bolt                               |
| 27                            | 91 43 004 | 2 Self locking nut                   |
| 28                            | 71 91 072 | 1 Angling ram assy                   |
| 29                            | 41322.02  | 1 Breakaway ram assy                 |

**CONTROL MOUNTING  
ASSY**

**BOMFORD TURNER**



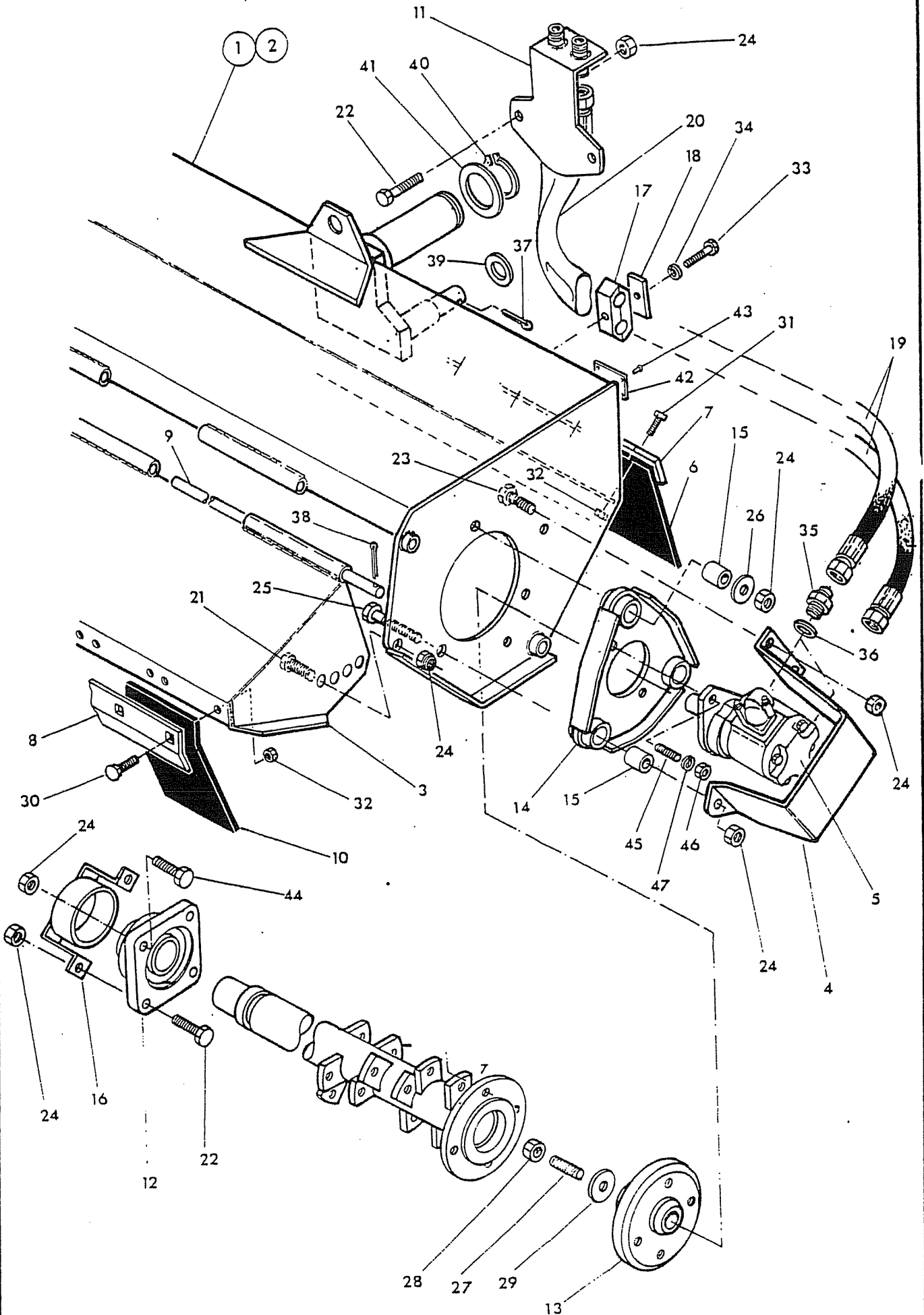
| Ref                               | Part No   | Qty | Description         |
|-----------------------------------|-----------|-----|---------------------|
| <b>CONTROL UNIT MOUNTING ASSY</b> |           |     |                     |
| 1                                 | 03.583.01 | 1   | Bracket             |
| 2                                 | 03.231.02 | 1   | Rubber edge strip   |
| 3                                 | 93 13 094 | 2   | Setscrew M8 x 45    |
| 4                                 | 03.152.01 | 4   | Rubber washer       |
| 5                                 | 91 00 104 | 2   | Plain washer dia 8  |
| 6                                 | 91 00 204 | 2   | Spring washer dia 8 |
| 7                                 | 91 93 004 |     | Wingnut M8          |



| Ref. Part No.    | Qty. | Description          |
|------------------|------|----------------------|
| <b>73-13-324</b> |      | <b>CAB GUARD KIT</b> |
| 1 73-13-049      | 1    | Guard panel - large  |
| 2 73-13-050      | 1    | Guard panel - small  |
| 3 60-01-064      | 12   | Spring               |
| 4 60-01-065      | 6    | Hook                 |
| 5 73-13-051      | 6    | Hook                 |

FLAIL HEAD CASING

**BOMFORD TURNER**



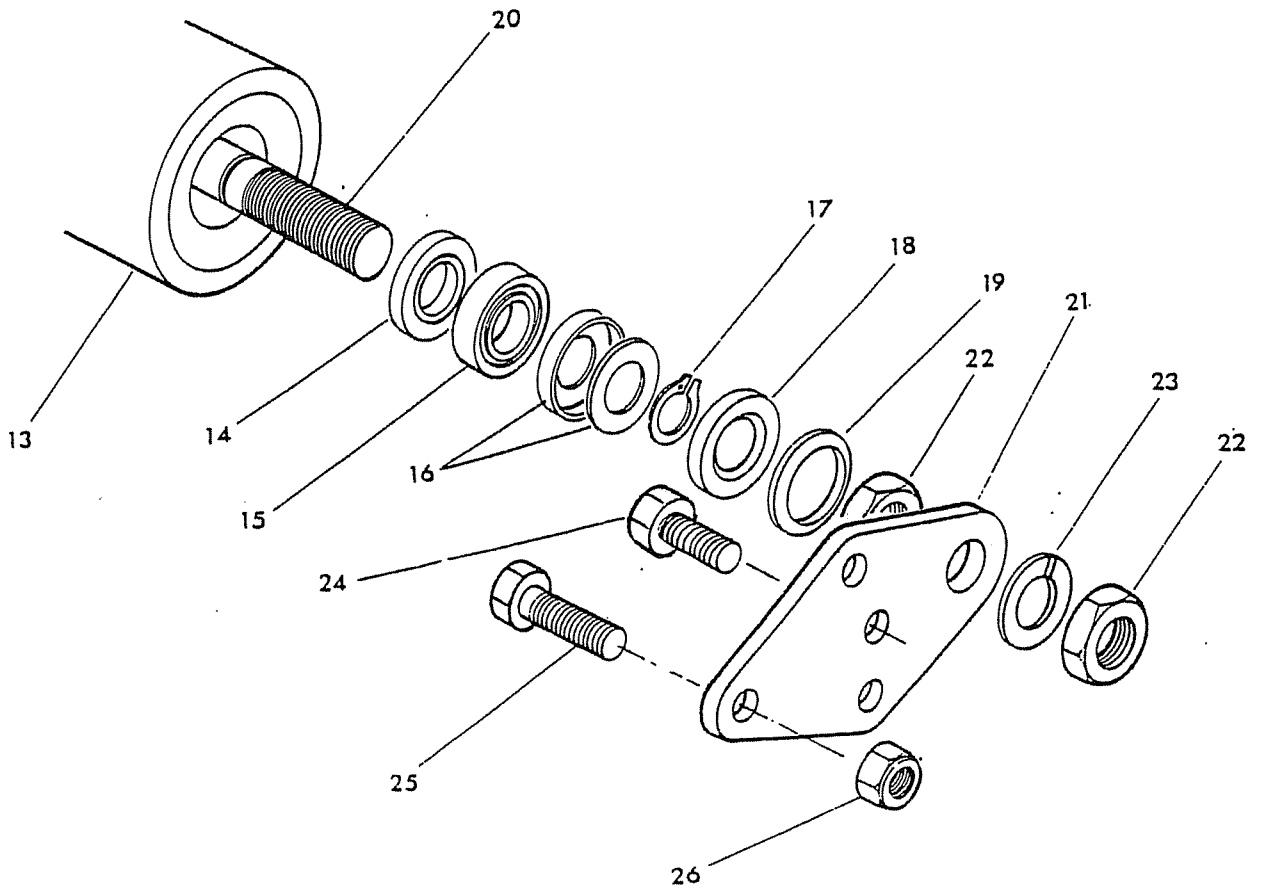
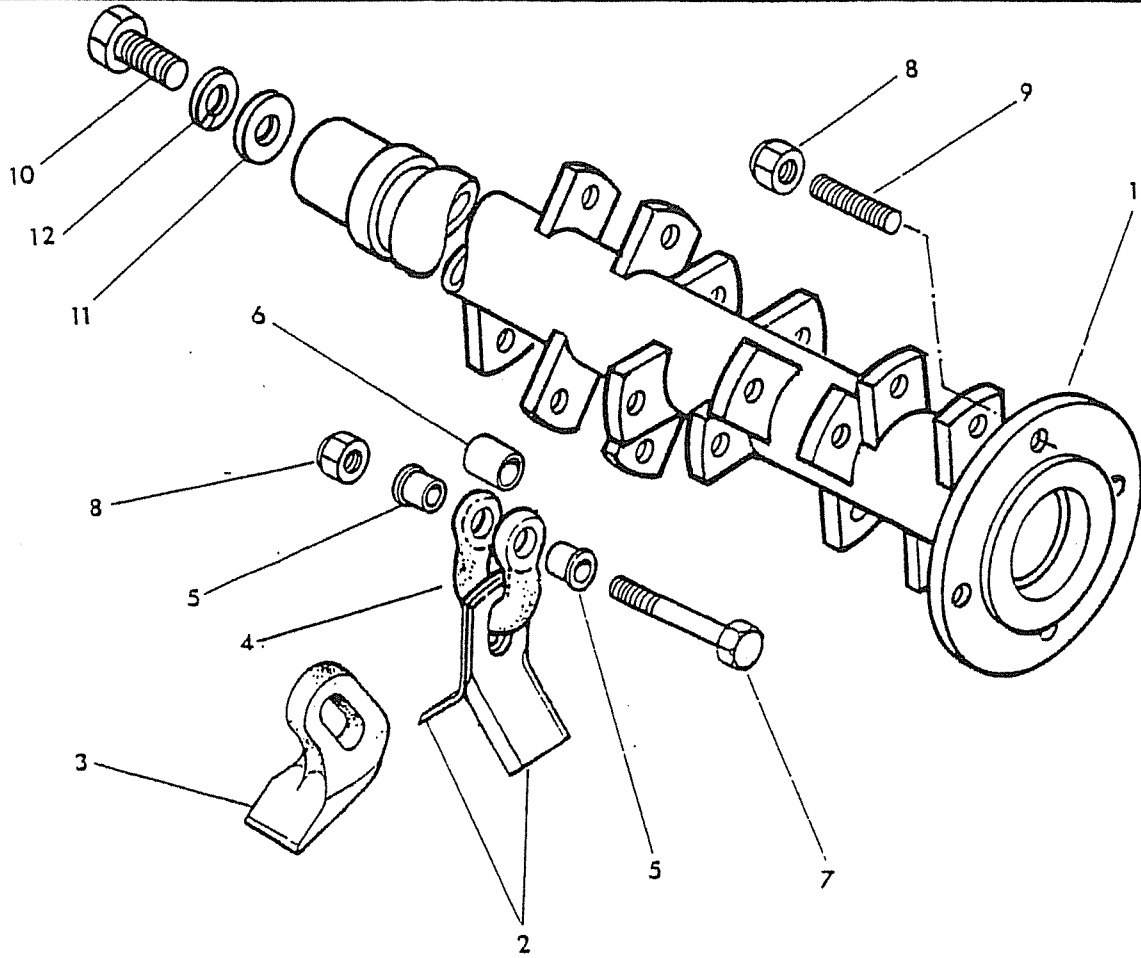
| Ref.                     | Part No.  | Qty | Description                  |
|--------------------------|-----------|-----|------------------------------|
| <b>FLAIL HEAD CASING</b> |           |     |                              |
| 1                        | 41282.01  | 1   | Casing - L.Hand              |
| 2                        | 41282.02  | 1   | Casing - R.Hand - not illus. |
| 3                        | 41283.01  | 1   | Front hood                   |
| 4                        | 41288.01  | 1   | Motor cover                  |
| 5                        | 08.785.05 | 1   | Hydraulic motor              |
| 6                        | 41289.01  | 1   | Rear flap                    |
| 7                        | 41290.01  | 1   | Clamp strip - rear           |
| 8                        | 41291.01  | 1   | Clamp strip - front          |
| 9                        | 41293.01  | 1   | Hood pivot bar               |
| 10                       | 41296.01  | 6   | Front flap                   |
| 11                       | 41297.01  | 1   | Hose bracket                 |
| 12                       | 03.008.01 | 1   | Flange bearing               |
| 13                       | 03.833.01 | 1   | Drive plate                  |
| 14                       | 09.132.01 | 1   | Motor mounting plate         |
| 15                       | 03.871.01 | 3   | Rubber bush                  |
| 16                       | 06.037.01 | 1   | Bearing cover                |
| 17                       | 06.430.09 | 1   | Hose clamp                   |
| 18                       | 06.418.03 | 1   | Clamp plate                  |
| 19                       | 85 01 247 | 2   | Hose 5/8 BSPX43 long FS-FS   |
| 20                       | 09.868.05 | 1   | Hose sleeve                  |
| 21                       | 93 13 046 | 2   | Setscrew                     |
| 22                       | 93 13 086 | 4   | Setscrew                     |
| 23                       | 93 13 056 | 2   | Setscrew                     |
| 24                       | 91 43 006 | 13  | Self locking nut             |
| 25                       | 92 13 136 | 3   | Bolt                         |
| 26                       | 02.824.01 | 2   | Washer                       |
| 27                       | 03.960.02 | 1   | Stud                         |
| 28                       | 01 41 003 | 1   | Self locking nut             |
| 29                       | 03.959.02 | 1   | Plain washer - special       |
| 30                       | 92 93 054 | 12  | Cup screw                    |
| 31                       | 93 13 034 | 8   | Setscrew                     |
| 32                       | 91 43 004 | 20  | Self locking nut             |
| 33                       | 92 13 094 | 1   | Bolt                         |
| 34                       | 91 00 204 | 1   | Spring washer                |
| 35                       | 85 81 270 | 2   | Adaptor                      |
| 36                       | 86 50 106 | 2   | Bonded seal                  |
| 37                       | 95 01 406 | 1   | Split pin                    |
| 38                       | 95 01 325 | 1   | Split pin                    |
| 39                       | 01 00 109 | 1   | Plain washer                 |
| 40                       | 04 06 247 | 1   | External circlip             |
| 41                       | 10 90 037 | 1   | Retaining washer             |
| 42                       | 13 35 246 | 1   | Serial No. Plate             |
| 43                       | 71 03 230 | 4   | Pop rivet                    |
| 44                       | 93 13 076 | 2   | Setscrew                     |
| 45                       | 04.282.56 | 2   | Stud                         |
| 46                       | 91.13.005 | 2   | Plain nut                    |
| 47                       | 91.00.205 | 2   | Spring washer                |

08.785.02

SEAL KIT - hydraulic motor

ROTOR & FLAIL OPTIONS  
ROLLER

**BOMFORD TURNER**

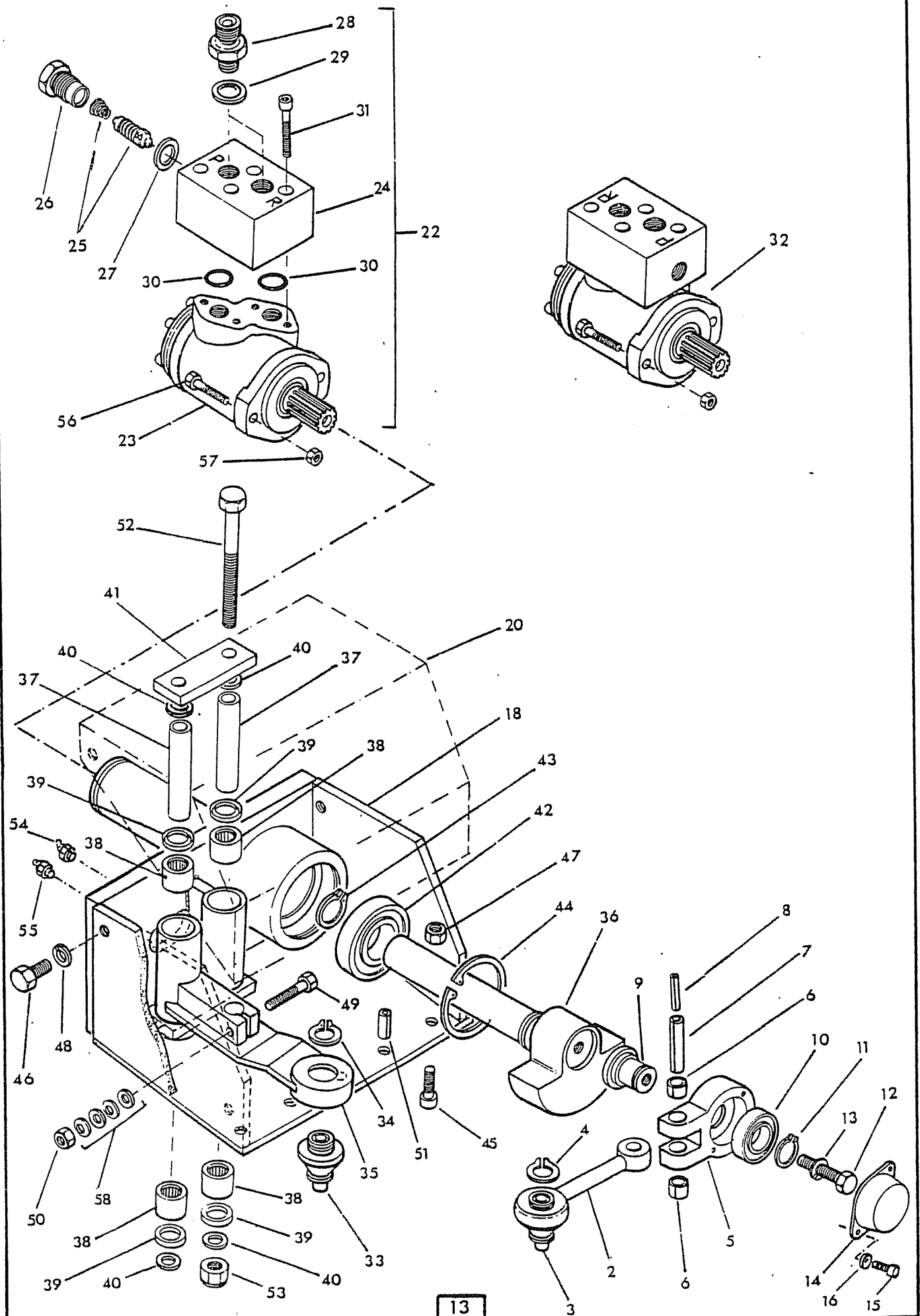


| Ref.         | Part No.  | Qty | Description       |
|--------------|-----------|-----|-------------------|
| <b>ROTOR</b> |           |     |                   |
| 1            | 41284.01  | 1   | Rotor             |
| 2            | 71 90 166 | 48  | Flail - grass     |
| 3            | 71 90 463 | 24  | Flail - universal |
| 4            | 05.895.01 | 24  | Shackle           |
| 5            | 02.801.01 | 48  | Collar            |
| 6            | 02.807.01 | 24  | Spacer            |
| 7            | 05.775.02 | 24  | Bolt              |
| 8            | 05.968.02 | 28  | Self locking nut  |
| 9            | 03.917.01 | 4   | Stud              |
| 10           | 93 13 076 | 1   | Setscrew          |
| 11           | 02.824.01 | 1   | Washer - special  |
| 12           | 91 00 206 | 1   | Spring washer     |

**ROLLER**

|    |           |   |                         |
|----|-----------|---|-------------------------|
|    | 41301.01  | 1 | Roller assembly compr:- |
| 13 | 41301.31  | 1 | Roller                  |
| 14 | 04.456.07 | 2 | Seal                    |
| 15 | 04.456.11 | 2 | Bearing                 |
| 16 | 04.456.06 | 2 | Labyrinth seal          |
| 17 | 04.456.04 | 2 | External circlip        |
| 18 | 04.456.08 | 2 | V seal                  |
| 19 | 04.456.05 | 2 | Bearing retainer        |
| 20 | 41301.32  | 1 | Roller shaft            |
| 21 | 41285.01  | 2 | Roller bracket          |
| 22 | 91 13 008 | 4 | Plain nut               |
| 23 | 91 00 208 | 2 | Spring washer           |
| 24 | 93 13 066 | 2 | Setscrew                |
| 25 | 93 13 086 | 2 | Setscrew                |
| 26 | 91.43.006 | 4 | Self locking nut        |

**CUTTERBAR DRIVE**



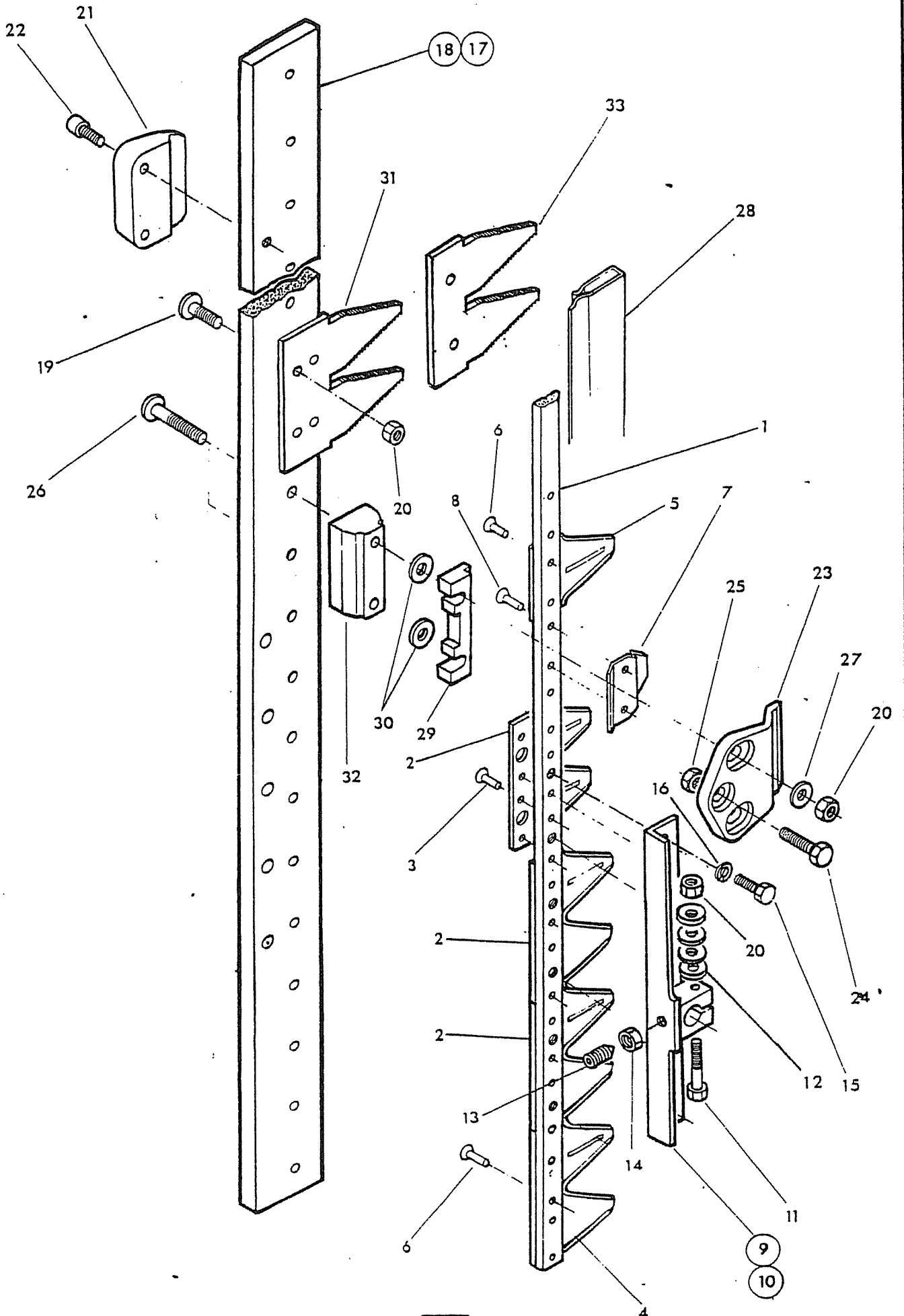


| Ref.                                | Part No.  | Qty | Description                                    |
|-------------------------------------|-----------|-----|--|
| <b>CUTTERBAR MOUNTING AND DRIVE</b> |           |     |  |
| 1                                   | 41075.01  | 1   | Con rod - L.Hand compr:-                       |
| 2                                   | 41532.01  | 1   | Con rod shaft                                  |
| 3                                   | 10 90 058 | 1   | Swivel   |
| 4                                   | 04 01 225 | 1   | External circlip                               |
| 5                                   | 10 90 056 | 1   | Bearing housing                                |
| 6                                   | 10 90 059 | 2   | Bush   |
| 7                                   | 10 90 060 | 1   | Spring dowel                                   |
| 8                                   | 10 90 061 | 1   | Spring dowel                                   |
| 9                                   | 10 90 057 | 1   | Spigot   |
| 10                                  | 06 00 074 | 1   | Bearing  |
| 11                                  | 04 01 230 | 1   | External circlip                               |
| 12                                  | 92 13 116 | 1   | Bolt   |
| 13                                  | 91 00 206 | 1   | Spring washer                                  |
| 14                                  | 10 90 054 | 1   | Bearing cap                                    |
| 15                                  | 93 43 023 | 2   | Capscrew                                       |
| 16                                  | 91 00 203 | 2   | Spring washer                                  |
| 17                                  | 41075.02  | 1   | Con rod-R.Hand-not illus. components as L.Hand |
| 18                                  | 41261.01  | 1   | Mounting bracket - L.Hand                      |
| 19                                  | 41261.02  | 1   | Mounting bracket - R.Hand - not illus.         |
| 20                                  | 41264.01  | 1   | Drive cover - L.Hand                           |
| 21                                  | 41264.02  | 1   | Drive cover - R.Hand - not illus.-             |
| 22                                  | 41336.01  | 1   | Motor assy. L.Hand compr:-                     |
| 23                                  | 83 01 293 | 1   | Motor  |
| 24                                  | 41360.01  | 1   | Valve plate                                    |
| 25                                  | 81 30 151 | 1   | Relief valve                                   |
| 26                                  | 81 30 032 | 1   | Relief valve cap                               |
| 27                                  | 86 50 103 | 1   | Bonded seal                                    |
| 28                                  | G381.2120 | 2   | Adaptor  |
| 29                                  | 86 50 104 | 2   | Bonded seal                                    |
| 30                                  | 86 00 403 | 2   | 'O' ring                                       |
| 31                                  | 93 43 104 | 4   | Capscrew                                       |
| 32                                  | 41336.02  | 1   | Motor assy. R.Hand - components as L.Hand      |
| 33                                  | 10 90 058 | 1   | Swivel   |
| 34                                  | 04 01 225 | 1   | External circlip                               |
| 35                                  | 41263.01  | 1   | Rocker arm                                     |
| 36                                  | 41266.01  | 1   | Crankshaft                                     |
| 37                                  | 41242.01  | 2   | Sleeve   |
| 38                                  | 06 00 102 | 4   | Bearing  |
| 39                                  | 86 29 212 | 4   | Sealing ring                                   |
| 40                                  | 41275.01  | 4   | Thrust washer                                  |
| 41                                  | 41262.01  | 2   | Control link                                   |
| 42                                  | 06 00 073 | 1   | Bearing  |
| 43                                  | 04 02 235 | 1   | External circlip                               |
| 44                                  | 04 11 272 | 1   | Internal circlip                               |
| 45                                  | 93 53 075 | 3   | Capscrew                                       |
| 46                                  | 93 13 035 | 4   | Setscrew                                       |
| 47                                  | 91 43 005 | 3   | Self locking nut                               |
| 48                                  | 91 00 205 | 4   | Spring washer                                  |
| 49                                  | 92 13 104 | 1   | Bolt   |
| 50                                  | 91 43 004 | 1   | Self locking nut                               |
| 51                                  | 04 28 120 | 2   | Spring dowel                                   |
| 52                                  | 92 13 286 | 2   | Bolt   |
| 53                                  | 91 43 006 | 2   | Self locking nut                               |
| 54                                  | 09 01 124 | 1   | Greaser  |
| 55                                  | 09 01 121 | 1   | Greaser  |
| 56                                  | 02 11 165 | 2   | Bolt   |
| 57                                  | 01 41 005 | 2   | Self locking nut                               |
| 58                                  | 10 90 119 | 4   | Disc spring                                    |

86 99 246

SEAL KIT -hydraulic motor

**CUTTERBAR**



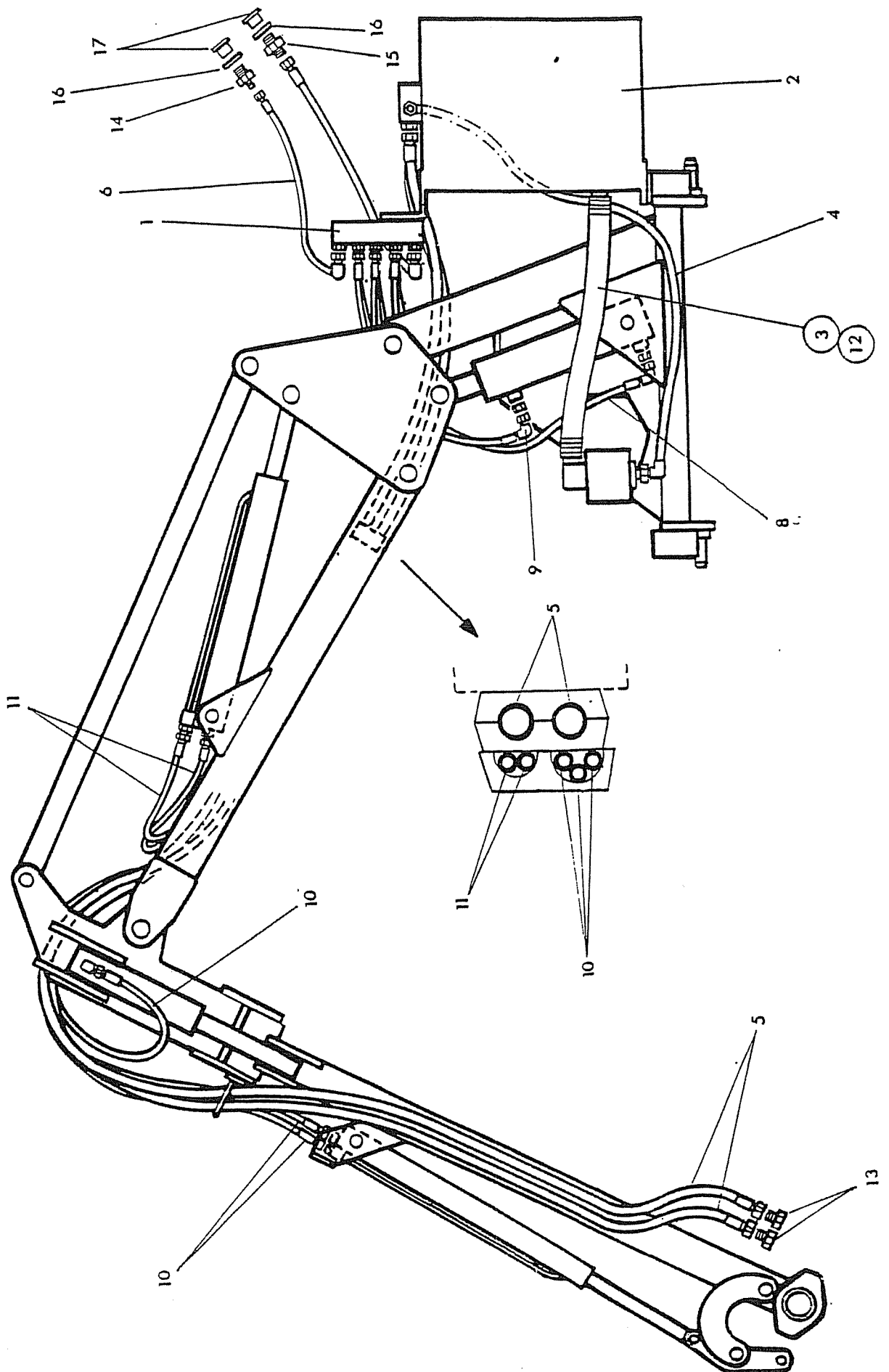
| Ref. | Part No.  | Qty | Description                          |
|------|-----------|-----|--------------------------------------|
|      |           |     | <b>CUTTERBAR ASSEMBLIES</b>          |
|      | 41.074.03 | 1   | Knife assembly                       |
| 1    | 41470.01  | 1   | Knife back                           |
| 2    | 41471.01  | 3   | Knife section-double-knife heel pos. |
| 3    | 10 90 062 | 12  | Rivet 5 x 12                         |
| 4    | 41471.02  | 11  | Knife section - double               |
| 5    | 41471.03  | 1   | Knife section - single               |
| 6    | 10 90 063 | 36  | Rivet 5 x 17                         |
| 7    | 41472.01  | 5   | Abutment plate                       |
| 8    | 10 90 064 | 20- | Rivet 5 x 20                         |
| 9    | 41.076.02 | 1   | Knife heel - R.hand                  |
| 10   | 41.076.01 | 1   | Knife heel - L.hand                  |
| 11   | 92 13 104 | 1   | Setscrews                            |
| 12   | 10 90 119 | 4   | Disc spring -                        |
| 13   | 93 63 044 | 1   | Grubscrew                            |
| 14   | 91 13 004 | 2   | Plain nut                            |
| 15   | 41477.01  | 4   | Setscrew                             |
| 16   | 91 00 204 | 4   | Spring washer -                      |
| 17   | 41.078.04 | 1   | Fingerbar - R.hand - not illus.      |
| 18   | 41.078.03 | 1   | Fingerbar - L.hand                   |
| 19   | 10 90 073 | 20  | Dome headed bolt                     |
| 20   | 91 43 004 | 30  | Self locking nut                     |
| 21   | 41475.01  | 1   | Slide plate                          |
| 22   | 91 43 024 | 2   | Capscrew                             |
| 23   | 41476.01  | 5   | Knife clip                           |
| 24   | 93 13 064 | 5   | Setscrew                             |
| 25   | 91 13 004 | 5   | Plain nut                            |
| 26   | 10 90 077 | 10  | Dome headed bolt                     |
| 27   | 10 90 079 | 10  | Washer                               |
| 28   | 10 90 152 | 1   | Knife guard                          |

**CUTTERBAR ASSEMBLY -  
UNIVERSAL ONLY**

|    |           |    |                |
|----|-----------|----|----------------|
| 29 | 41473.01  | 5  | Abutment block |
| 30 | 10 90 078 | 10 | Washer         |
| 31 | 41474.01  | 15 | Finger         |

**CUTTERBAR ASSEMBLY -  
GRASS ONLY**

|    |          |    |                |
|----|----------|----|----------------|
| 32 | 41473.02 | 5  | Abutment block |
| 33 | 41474.02 | 15 | Finger         |



Ref. Part No. Qty Description

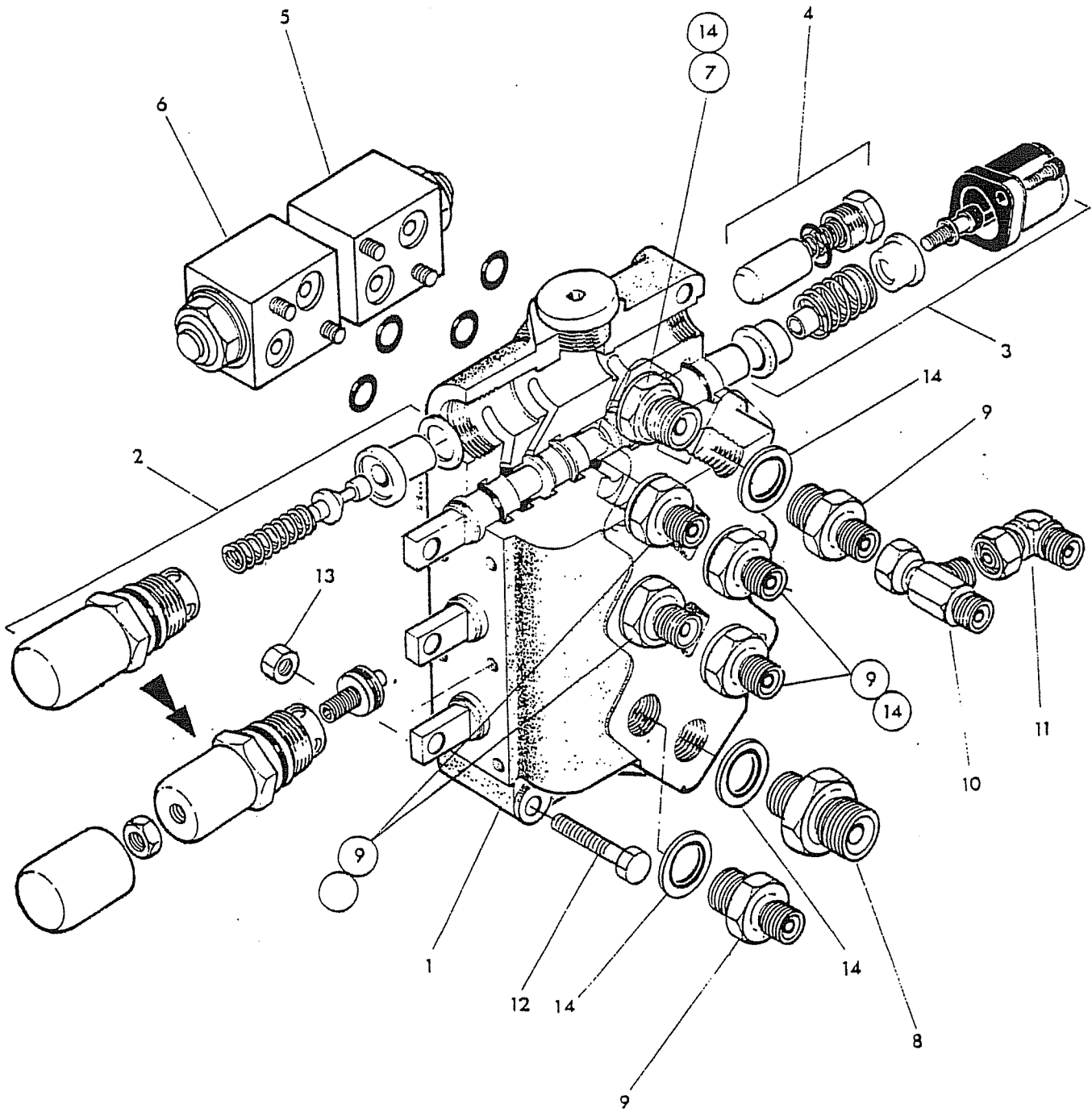
**HOSE INSTALLATION S.I. MACHINES**

|    |           |   |   |
|----|-----------|---|---|
| 1  |           | 1 | Control valve                                 |
| 2  |           | 1 | Tank  |
| 3  | 85 01 139 | 1 | Hose 1 1/4 bore x 24 long - suction           |
| 4  | 85 01 250 | 1 | Hose 5/8 BSP X 52 long FS-F135 pump to tank   |
| 5  | 85 01 249 | 2 | Hose 5/8 BSP X 140 long FS-FS - flail hoses   |
| 6  | 85 31 323 | 1 | Hose 3/8 BSP X 80 long SF-90F supply          |
| 7  | 85 32 014 | 1 | Hose 1/2 BSP X 80 long SF-90F return          |
| 8  | 85 35 042 | 1 | Hose 1/4 BSP X 40 long SF - 90F - lift base   |
| 9  | 85 35 082 | 1 | Hose 1/4 BSP X 34 long SF-90F - lift gland    |
| 10 | 85 15 232 | 3 | Hose 1/4 BSP X 88 long SF-SF - angle & B/away |
| 11 | 85 15 132 | 2 | Hose 1/4 BSP X 64 long SF-SF - reach          |
| 12 | 09 04 107 | 4 | Hose clip                                     |
| 13 | G381 2119 | 2 | Blanking cap                                  |
| 14 | 60 00 112 | 1 | Adaptor                                       |
| 15 | 85 81 110 | 1 | Union   |
| 16 | 86 50 104 | 2 | Bonded seal                                   |
| 17 | ST 134    | 2 | Plastic blanking cap                          |



| Ref. Part No. | Qty | Description                                   |
|---------------|-----|---|
|               |     | <b>HOSE INSTALLATION T.I. MACHINES</b>        |
| 1             | 1   | Control valve                                 |
| 2             | 1   | Rotor control valve                           |
| 3             | 1   | Tank  |
| 4             | 1   | Hose 1 1/4 bore X 24 long - suction           |
| 5             | 1   | Hose 5/8BSPX52 long SF-135F-pump to R.C.valve |
| 6             | 2   | Hose 5/8 BSP X 140 long FS-FS - flail hoses   |
| 7             | 1   | Hose 3/8 BSP X 65 long SF-90F - pump -valve   |
| 8             | 1   | Hose 1/2BSPX22 long SF-90F valve-R.C.valve    |
| 9             | 1   | Hose 1/4 BSP X 40 long SF-90F - lift base     |
| 10            | 1   | Hose 1/4 BSP X 34 long SF-90F - lift gland    |
| 11            | 3   | Hose 1/4 BSP X 88 long SF-SF -angle & b/away  |
| 12            | 2   | Hose 1/4 BSP X 64 long SF-SF -reach           |
| 13            | 1   | Hose 5/8 BSP X 46 long SF-SF - R.C.valve-tank |
| 14            | 4   | Hose clip                                     |
| 15            | 2   | Blanking caps                                 |

**CONTROL VALVE**

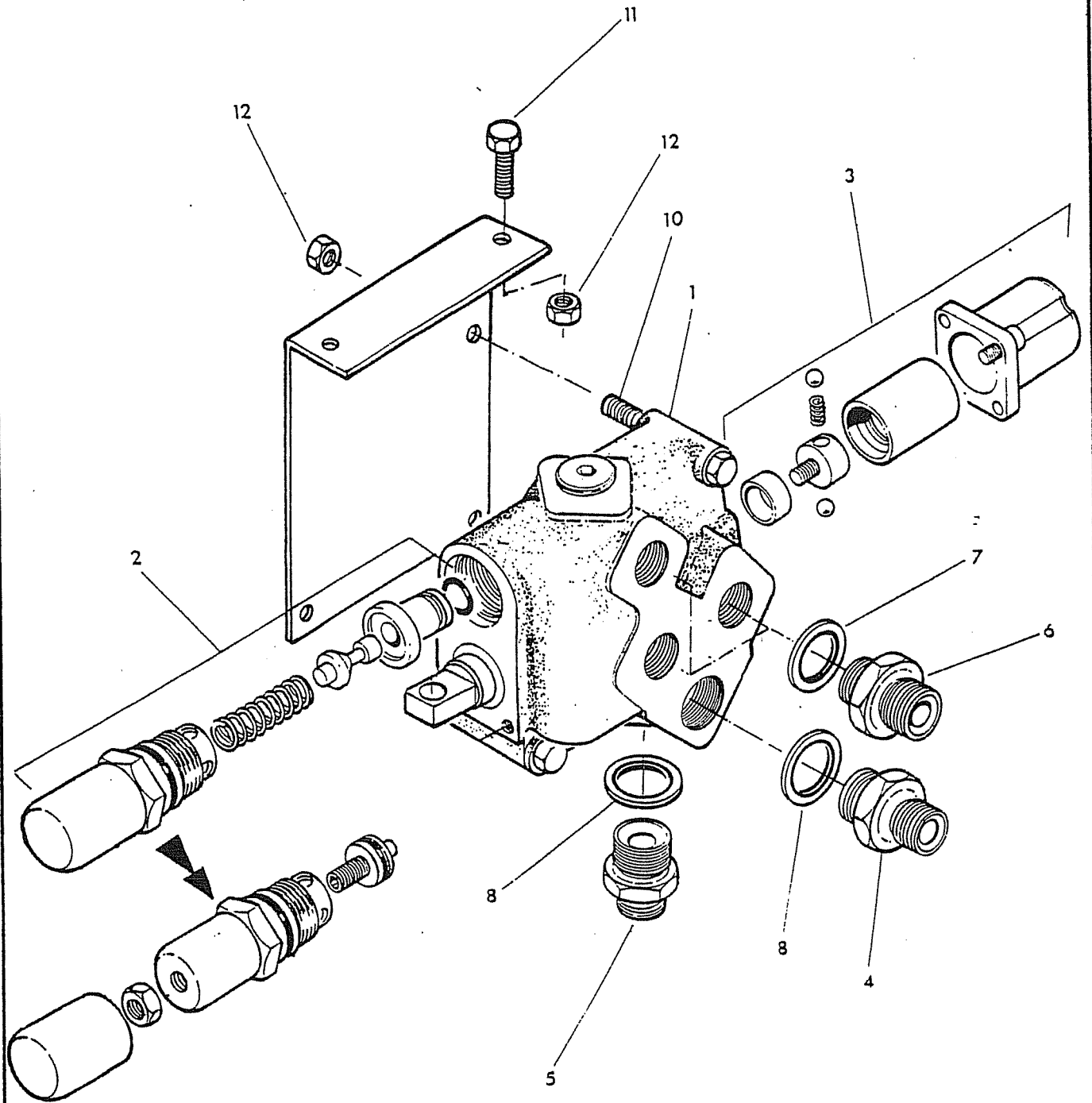




| Ref. Part No.                 | Qty       | Description                                |
|-------------------------------|-----------|--|
| <b>CONTROL VALVE ASSEMBLY</b> |           |  |
| 1                             | 81 30 324 | 1 Control valve:                           |
| 2                             | G381 2539 | 1 Main relief valve 160 Bar (2300 Psi)     |
| 3                             | 81 30 134 | 3 Centering spring assembly                |
| 4                             | 81 30 022 | 1 Non return valve assembly                |
| 5                             | 81 28 064 | 1 Service relief valve 175 Bar - Lift base |
| 6                             | 81 28 065 | 1 Service relief valve 40 Bar Lift gland   |
| 7                             | 60 00 113 | 1 Adaptor                                  |
| 8                             | 60 00 112 | 1 Adaptor                                  |
| 9                             | 85 81 115 | 6 Adaptor                                  |
| 10                            | 85 81 254 | 1 Tee connector                            |
| 11                            | 85 81 190 | 1 Elbow-swivel                             |
| 12                            | 92 13 144 | 2 Bolt                                     |
| 13                            | 91 43 004 | 2 Self locking nut                         |
| 14                            | 86 50 103 | 8 Bonded seal                              |
|                               | 86 99 163 | <b>SEAL KIT</b>                            |
|                               | 87 00 510 | 4 'O' ring                                 |

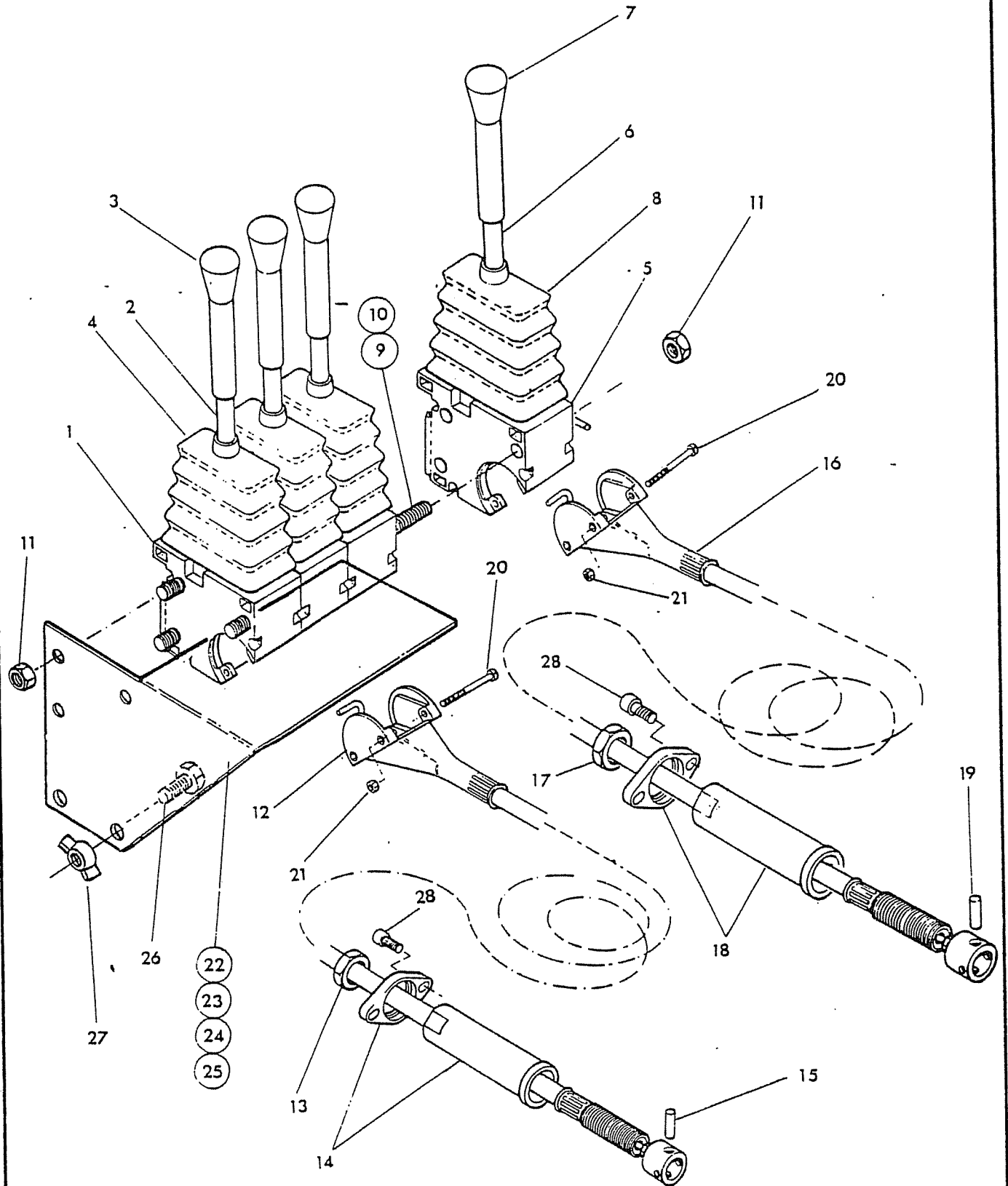
**ROTOR CONTROL VALVE**  
T.I. only

**BOMFORD TURNER**

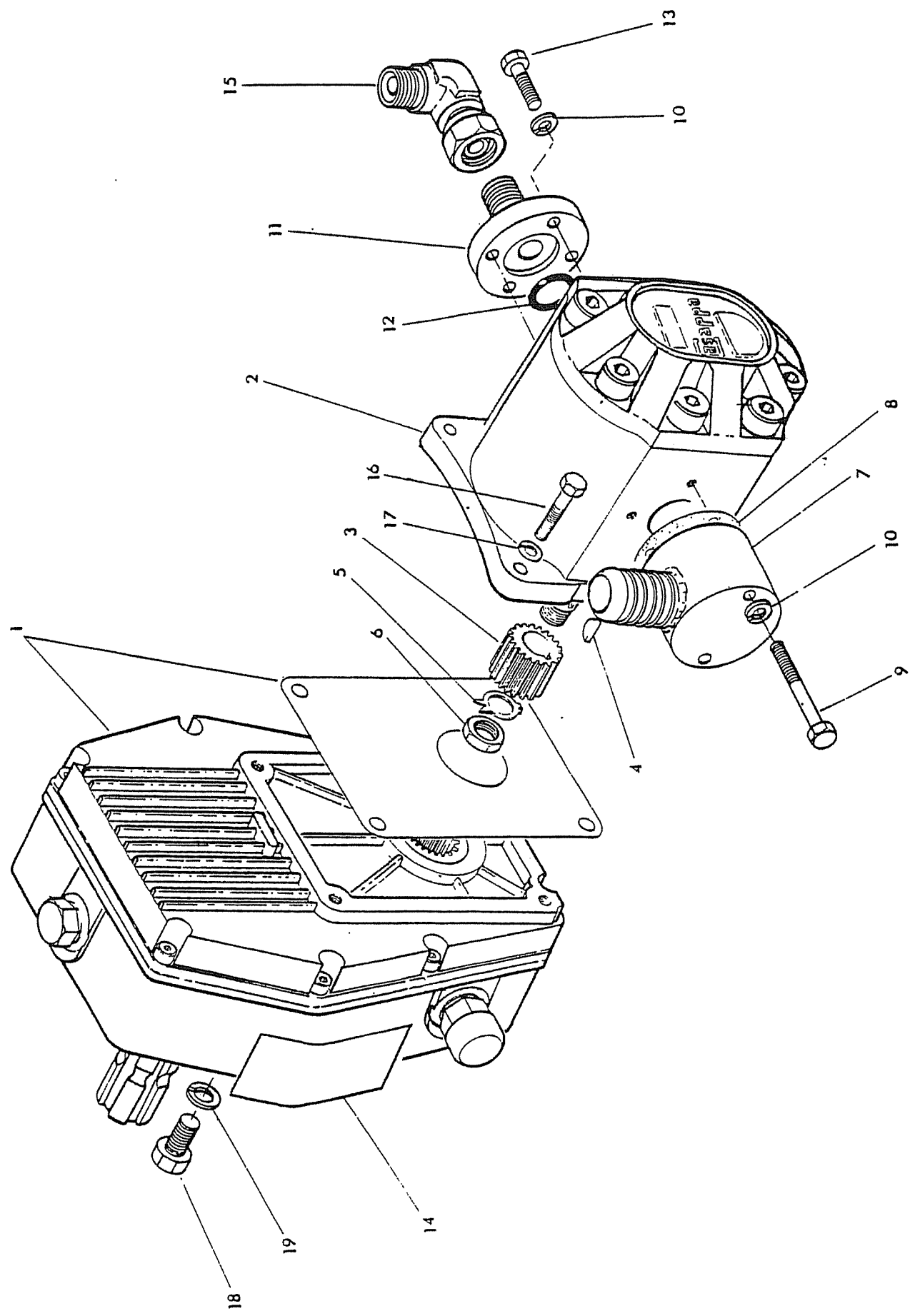


| Ref. Part No.  | Qty       | Description                         |
|--|-----------|-------------------------------------|
| <b>ROTOR CONTROL VALVE ASSEMBLY<br/>(T.I. Models only)</b> |           |                                     |
| 1  | 81 25 343 | 1 Rotor control valve inc:          |
| 2  | 81 25 095 | 1 Relief valve - 3000 psi (210 bar) |
| 3  | 81 25 109 | 1 Spool detent assembly             |
| 4  | 85 81 130 | 1 Adaptor                           |
| 5  | 85 81 270 | 1 Adaptor                           |
| 6  | 85 81 180 | 3 Adaptor                           |
| 7  | 86 50 104 | 3 Bonded seal                       |
| 8  | 86 50 106 | 2 Bonded seal                       |
| 9  | 41328.01  | 1 Mounting bracket                  |
| 10   | 92 13 164 | 3 Bolt                              |
| 11   | 93 13 044 | 2 Setscrew                          |
| 12   | 91 43 004 | 5 Self locking nut                  |
| <b>86 99 218</b>   |           | <b>SEAL KIT</b>                     |

**LEVER CONTROLS**



| Ref.                     | Part No.  | Qty    | Description                               |
|--------------------------|-----------|--------|---|
| <b>LEVERS AND CABLES</b> |           |        |   |
|                          | 80 17 022 | 3      | Lever assy. lift, reach & angle each incl |
| 1                        | 80 17 023 | 1      | Lever pivot box                           |
| 2                        | 80 17 028 | 1      | Lever                                     |
| 3                        | 80 17 027 | 1      | Knob                                      |
| 4                        | 80 17 026 | 1      | Weather gaiter                            |
|                          | 80 17 024 | 1      | Lever assy. rotor control incl: )         |
| 5                        | 80 17 025 | 1      | Lever pivot box ) Ti                      |
| 6                        | 80 17 028 | 1      | Lever ) only                              |
| 7                        | 80 17 027 | 1      | Knob )                                    |
| 8                        | 80 17 026 | 1      | Weather gaiter )                          |
| 9                        | 04.282.73 | 3      | Tie rod - 3 lever                         |
| 10                       | 04.282.70 | 3      | Tie rod - 4 lever                         |
| 11                       | 91 43 003 | 3      | Self locking nut                          |
| 12                       | 80 17 035 | 3      | Cable assy. lift, reach & angle each incl |
| 13                       | 80 17 014 | 1      | Locknut                                   |
| 14                       | 80 17 013 | 1      | Flange and sleeve                         |
| 15                       | 80 17 016 | 1      | Spool eye pin                             |
| 16                       | 80 17 046 | 1      | Cable assy. rotor control incl:           |
| 17                       | 80 17 014 | 1      | Locknut                                   |
| 18                       | 80 17 018 | 1      | Flange and sleeve                         |
| 19                       | 80 17 021 | 1      | Spool eye pin                             |
| 20                       | 93 73 081 | As req | Screw                                     |
| 21                       | 91 13 001 | As req | Nut                                       |
| 22                       | 41.181.01 | 1      | Mounting bracket - 3 lever L.Hand         |
| 23                       | 41.181.02 | 1      | Mounting bracket - 3 lever R.Hand         |
| 24                       | 09.970.01 | 1      | Mounting bracket - 4 lever L.Hand         |
| 25                       | 09.970.02 | 1      | Mounting bracket - 4 lever R.Hand         |
| 26                       | 93 13 034 | 2      | Setscrew                                  |
| 27                       | 91 93 004 | 2      | Wingnut                                   |
| 28                       | 93 43 022 | As req | Capscrew                                  |



Ref. Part No. Qty Description

**PUMP & GEARBOX ASSEMBLY S.I. MODELS**

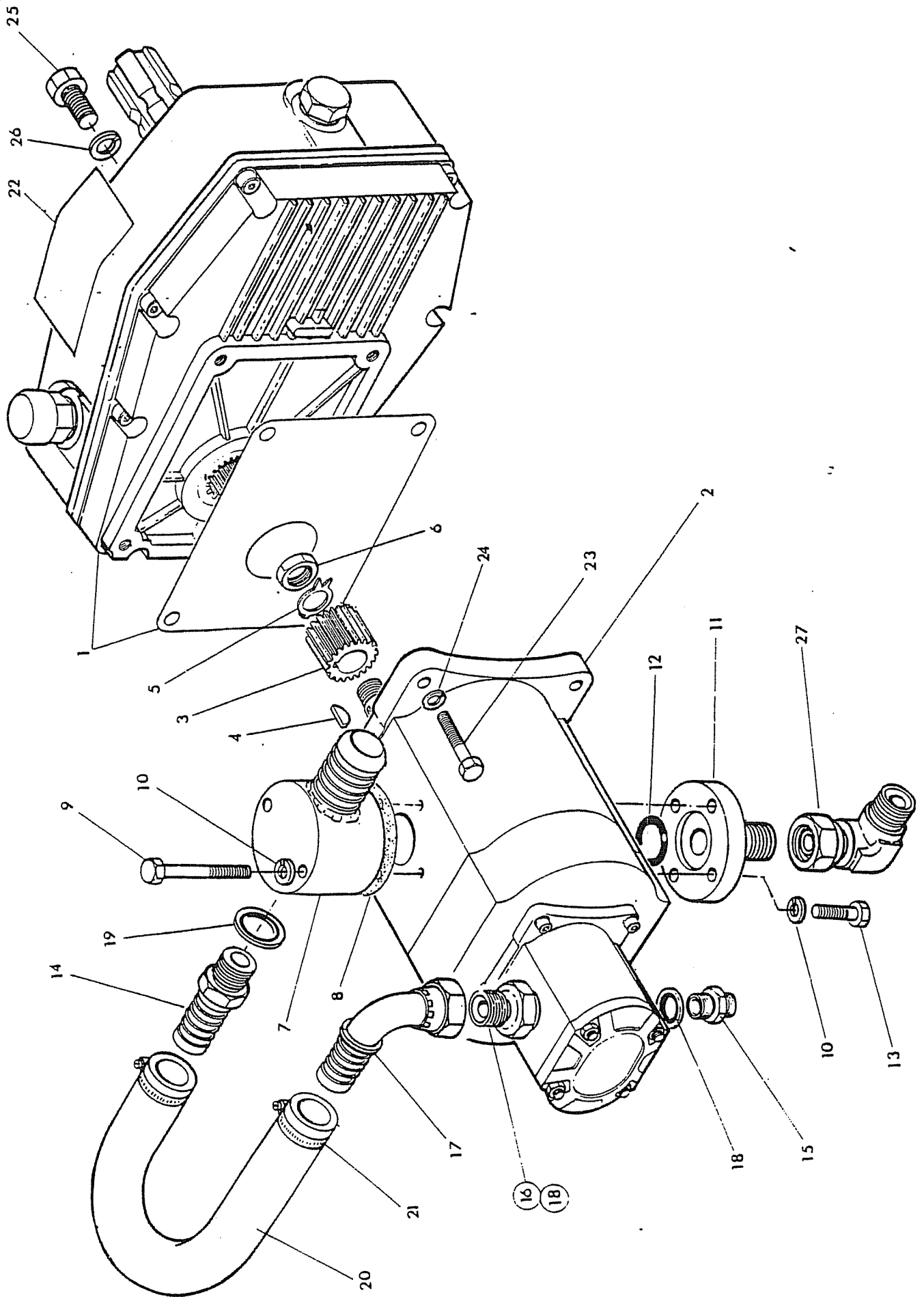
|    |             |   |                                |
|----|-------------|---|--------------------------------|
| 1  | 80 13 443   | 1 | Gearbox assembly               |
| 2  | 82 01 457   | 1 | pump CPL 33D c/w coupling etc. |
| 3  | 80 13 057   | 1 | Coupling                       |
| 4  | 83 01 010   | 1 | Key                            |
| 5  | 82 01 139   | 1 | Tabwasher                      |
| 6  | 91 00 015   | 1 | Thin locknut                   |
| 7  | 80 13 022/B | 1 | Suction connection             |
| 8  | 80 13 023   | 1 | Gasket                         |
| 9  | 92 13 144   | 2 | Bolt                           |
| 10 | 91 00 204   | 6 | Spring washer                  |
| 11 | 80 13 083   | 1 | Pressure connection            |
| 12 | 86 00 119   | 1 | 'O' ring                       |
| 13 | 93 13 054   | 4 | Setscrew                       |
| 14 | 12 90 030   | 1 | Sticker                        |
| 15 | 85 81 338   | 1 | Elbow - swivel                 |
| 16 | 92 13 095   | 4 | Bolt                           |
| 17 | 91 00 205   | 4 | Spring washer                  |
| 18 | 93 13 046   | 4 | Setswcrew                      |
| 19 | 91 00 206   | 4 | Spring washer                  |

**86 99 215**

**PUMP SEAL KIT**

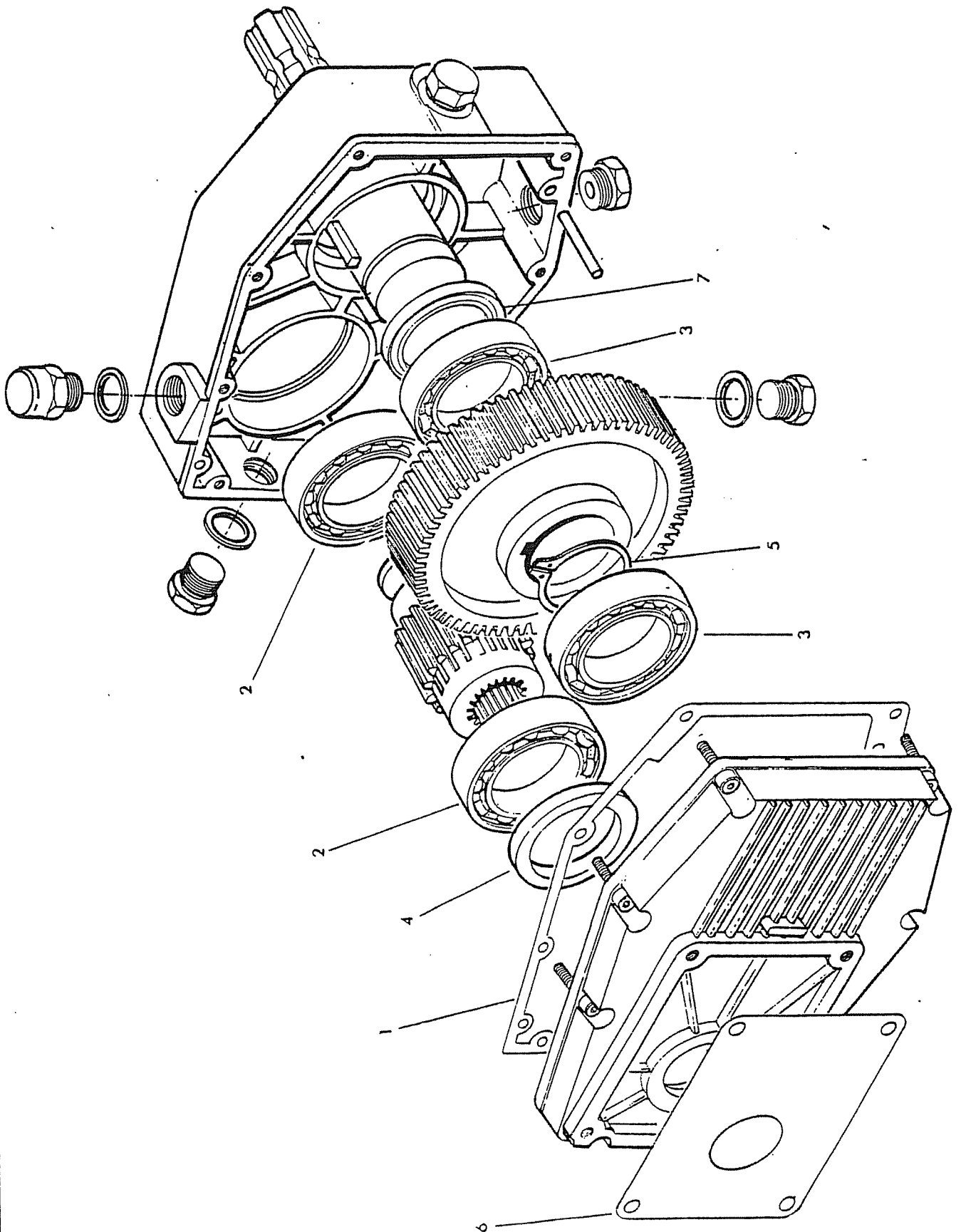
PUMP & GEARBOX T.i.

**BOMFORD TURNER**





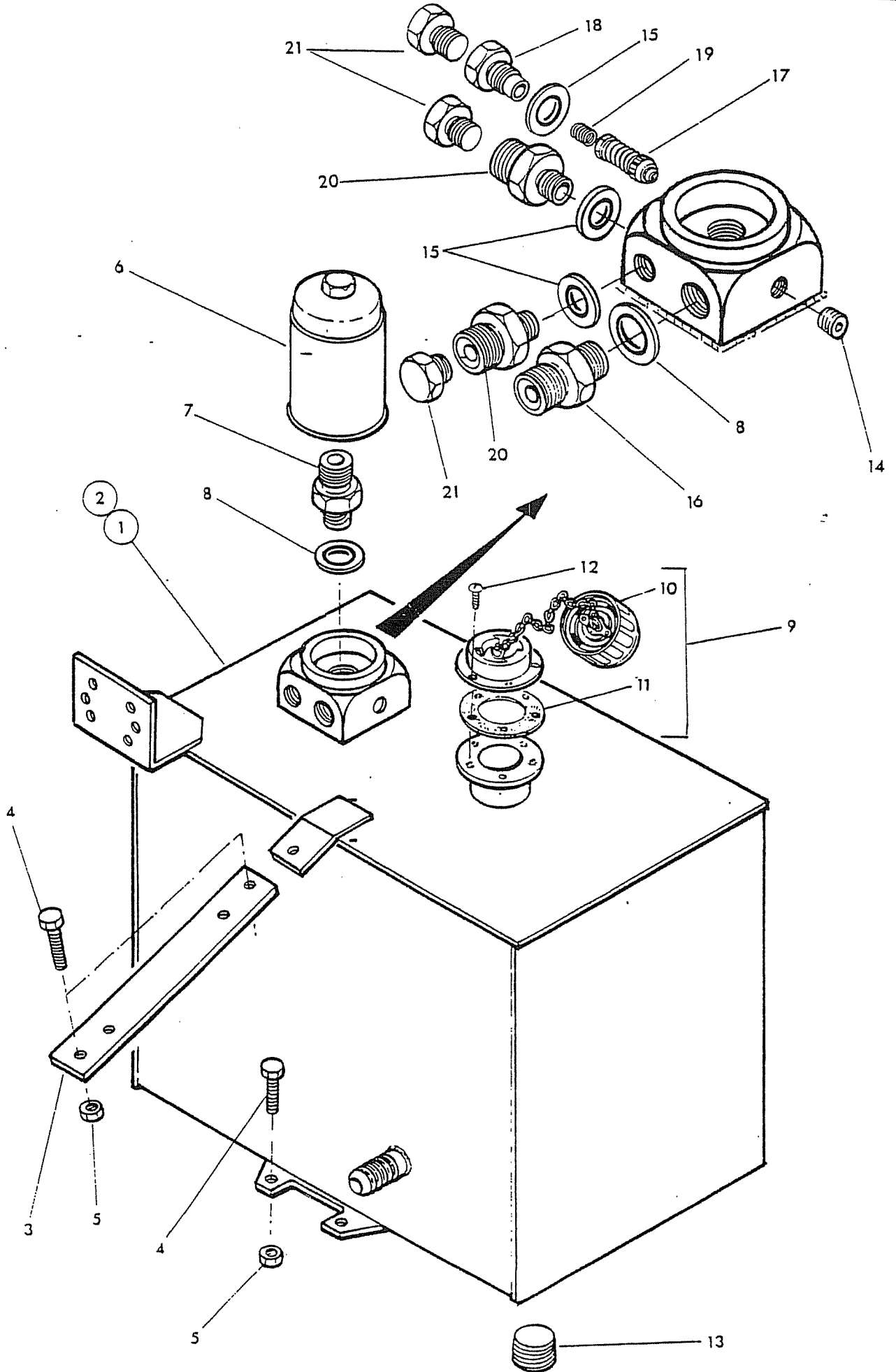
| Ref.   | Part No.  | Qty | Description                               |
|--|-----------|-----|---|
| <b>PUMP &amp; GEARBOX ASSEMBLY T.I. MODELS</b> |           |     |   |
| 1  | 80 13 443 | 1   | Gearbox assembly                          |
| 2  | 82 01 458 | 1   | Pump assembly CPL33/5.7 c/w coupling etc. |
| 3  | 80 13 057 | 1   | Coupling                                  |
| 4  | 83 01 010 | 1   | Key                                       |
| 5  | 82 01 139 | 1   | Tabwasher                                 |
| 6  | 91 00 015 | 1   | Thin locknut                              |
| 7  | 80 13 082 | 1   | Suction connection                        |
| 8  | 80 13 023 | 1   | Gasket                                    |
| 9  | 92 13 144 | 2   | Bolt                                      |
| 10   | 91 00 204 | 6   | Spring washer                             |
| 11   | 80 13 083 | 1   | Pressure connection                       |
| 12   | 86 00 119 | 1   | 'O' ring                                  |
| 13   | 93 13 054 | 4   | Setscrew                                  |
| 14   | 90 02 059 | 1   | Adaptor                                   |
| 15   | 60 00 113 | 1   | Adaptor                                   |
| 16   | 85 81 175 | 1   | Adaptor                                   |
| 17   | 85 81 173 | 1   | Elbow                                     |
| 18   | 86 50 103 | 2   | Bonded seal                               |
| 19   | 86 50 104 | 1   | Bonded seal                               |
| 20   | 85 01 099 | 1   | Hose 5/8 bore X 13 long                   |
| 21   | 09 04 204 | 2   | Hose clips                                |
| 22   | 12 90 030 | 1   | Sticker                                   |
| 23   | 92 13 095 | 4   | Bolt                                      |
| 24   | 91 00 205 | 4   | Spring washer                             |
| 25   | 93 13 046 | 4   | Setscrew                                  |
| 26   | 91 00 206 | 4   | Spring washer                             |
| 27   | 85 81 338 | 1   | Elbow swivel                              |
| <b>86 99 215</b>                               |           |     | <b>PUMP SEAL KIT</b>                      |



| Ref. | Part No.         | Qty      | Description                  |
|------|------------------|----------|------------------------------|
|      | <b>80 13 443</b> | <b>1</b> | <b>GEARBOX ASSEMBLY</b>      |
| 1    | 80 13 087        | 1        | .Gearbox case sealing gasket |
| 2    | 06 00 047        | 2        | .Bearing                     |
| 3    | 06 00 048        | 2        | .Bearing                     |
| 4    | 86 29 139        | 1        | .Seal                        |
| 5    | 04 01 250        | 1        | .External circlip            |
| 6    | 90 13 056        | 1        | .Pump face gasket            |
| 7    | 86 29 134        | 1        | .Seal                        |

HYDRAULIC TANK

**BOMFORD TURNER**



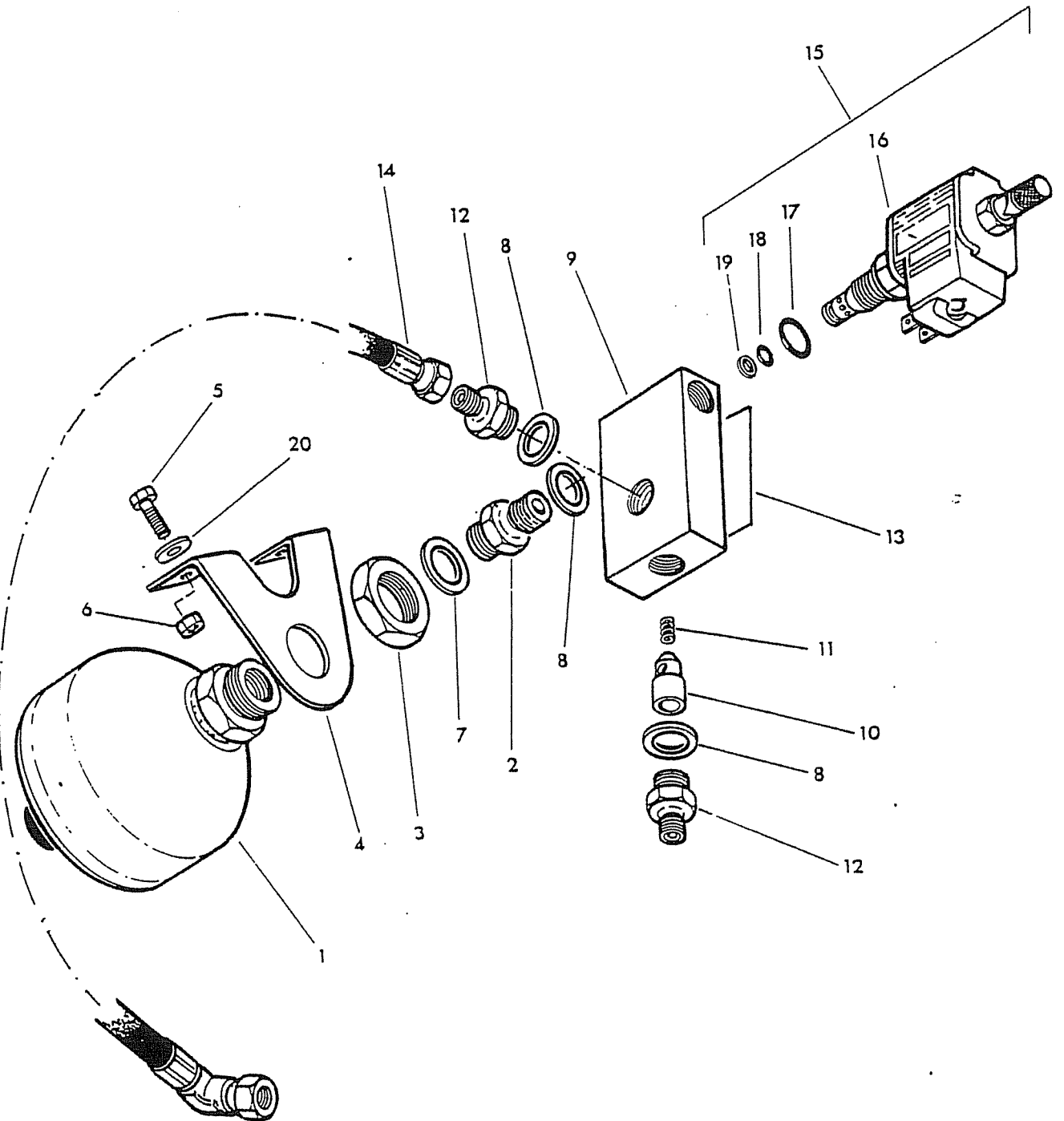
Ref. Part No. Qty Description

**OIL TANK ASSEMBLY**

| Ref. Part No. | Qty       | Description |                                 |
|---------------|-----------|-------------|---------------------------------|
| 1             | 41196.01  | 1           | Tank - L.Hand                   |
| 2             | 41196.02  | 1           | Tank - R.Hand                   |
| 3             | 41204.01  | 1           | Tank strap                      |
| 4             | 93 13 065 | 4           | Setscrew                        |
| 5             | 91 43 005 | 4           | Self locking nut                |
| 6             | 84 01 045 | 1           | Filter                          |
| 7             | 85 81 174 | 1           | Adaptor                         |
| 8             | 86 50 104 | 2           | Bonded seal                     |
| 9             | 84 01 014 | 1           | Filler/breather assembly compr: |
| 10            | 84 01 015 | 1           | Cap and neck                    |
| 11            | 84 01 017 | 1           | Gasket                          |
| 12            | 03 00 082 | 6           | Screw-self tapping              |
| 13            | 85 81 203 | 1           | Drain plug                      |
| 14            | 85 82 042 | 1           | Plug                            |
| 15            | 86 50 103 | 3           | Bonded seal                     |
| 16            | G381.2120 | 1           | Adaptor                         |
| 17            | 81 30 030 | 1           | Relief valve                    |
| 18            | 81 30 031 | 1           | Relief valve housing            |
| 19            | 81 16 011 | 1           | Spring                          |
| 20            | 85 81 175 | 2           | Adaptor                         |
| 21            | 80 03 001 | 3           | Blanking plug - T.I. only       |

LIFT FLOAT KIT

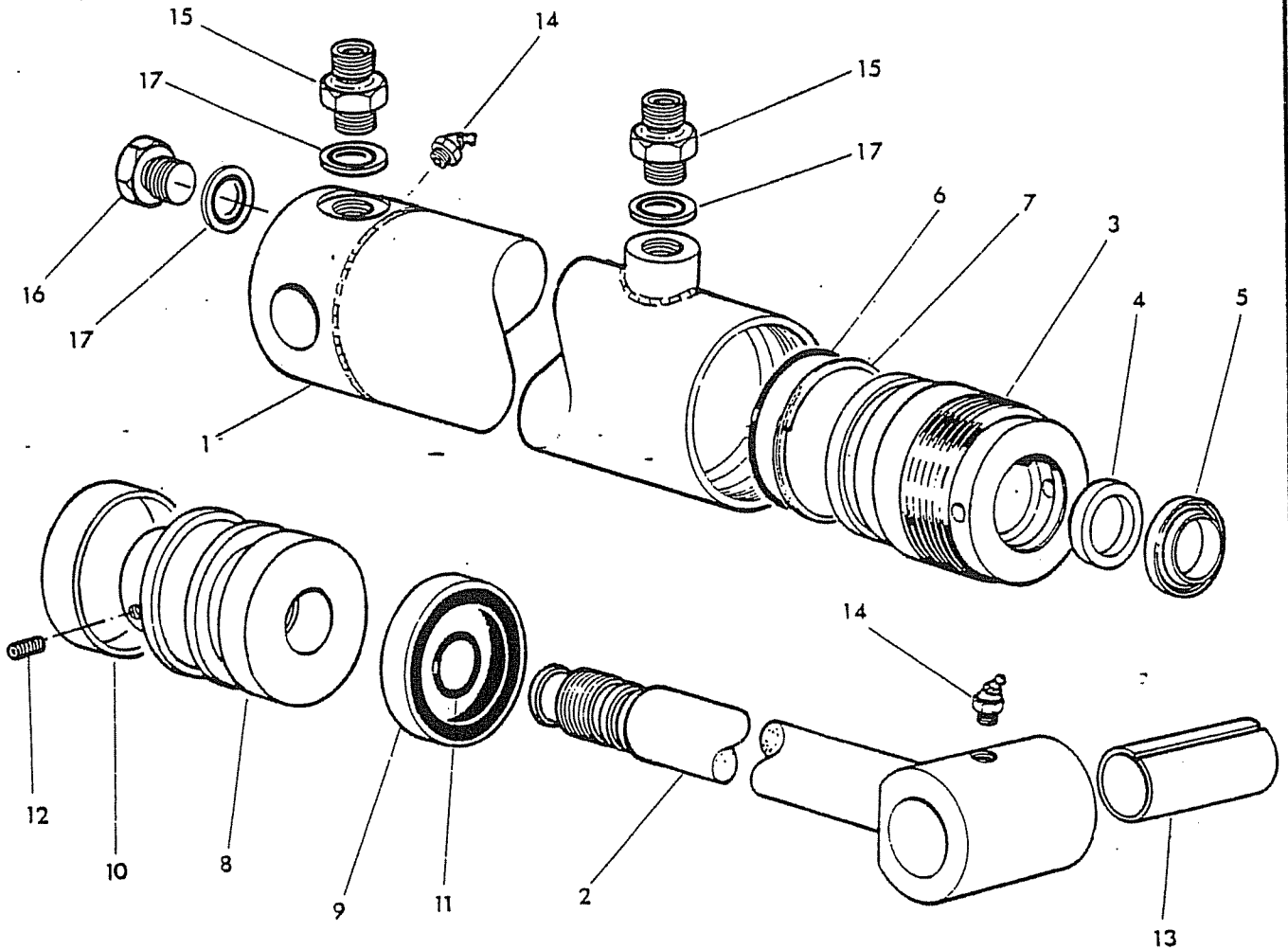
**BOMFORD TURNER**



| Ref. | Part No.         | Qty | Description                            |
|------|------------------|-----|--|
|      | <b>81 26 291</b> |     | <b>LIFT FLOAT KIT - Quick response</b> |
| 1    | 81 26 042        | 1   | Accumulator                            |
| 2    | G241 0380        | 1   | Adaptor                                |
| 3    | 81 26 035        | 1   | Bulkhead nut                           |
| 4    | 81 26 286        | 1   | Bracket                                |
| 5    | 93 13 054        | 2   | Setscrew                               |
| 6    | 91 43 004        | 2   | Self locking nut                       |
| 7    | 86 50 322        | 1   | Bonded seal                            |
| 8    | 86 50 103        | 3   | Bonded seal                            |
| 9    | 81 26 287        | 1   | Control block                          |
| 10   | 81 26 037        | 1   | Response piston                        |
| 11   | 81 16 011        | 1   | Spring                                 |
| 12   | 85 81 115        | 2   | Adaptor                                |
| 13   | 12 90 061        | 1   | Operating sticker                      |
| 14   | 85 35 012        | 1   | Hose 1/4 BSP X 12 long SF - 90F        |
| 15   | 81 30 183        | 1   | Poppet valve including:                |
| 16   | 81 30 184        | 1   | Coil                                   |
| 17   | 87 00 017        | 1   | 'O' ring                               |
| 18   | 87 00 511        | 1   | 'O' ring                               |
| 19   | 87 09 511        | 1   | Anti extrusion ring                    |
| 20   | 91 00 104        | 2   | Plain washer                           |

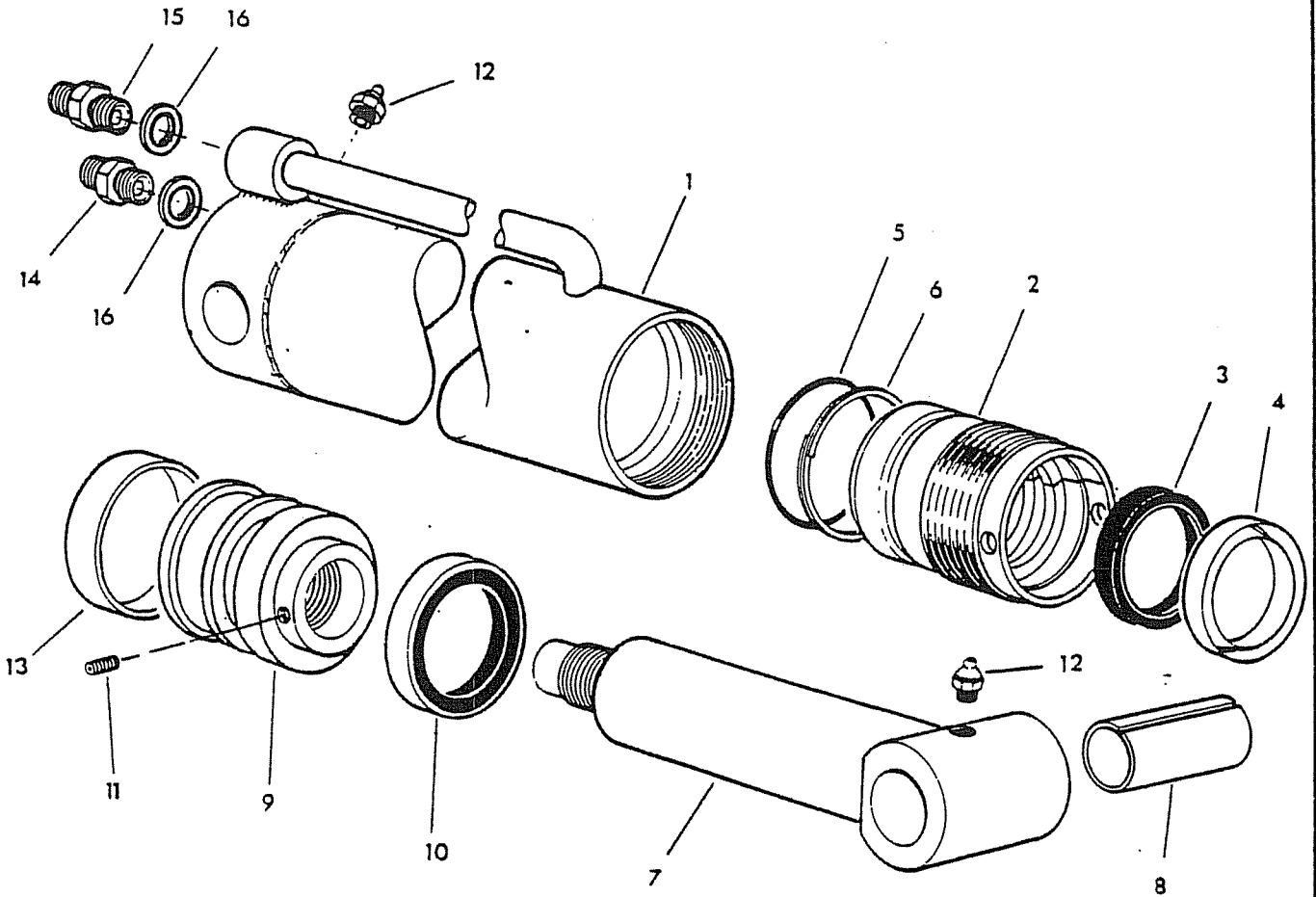
**LIFT RAM**

**BOMFORD TURNER**



| Ref. | Part No.         | Qty | Description              |
|------|------------------|-----|--------------------------|
|      | <b>41014.03</b>  |     | <b>LIFT RAM ASSEMBLY</b> |
| 1    | 41034.01         | 1   | Ram barrel               |
| 2    | 41035.01         | 1   | Piston rod               |
| 3    | 71 20 384        | 1   | Gland housing            |
| 4    | 86 29 164        | 1   | Gland seal               |
| 5    | 86 29 147        | 1   | Piston rod wiper seal    |
| 6    | 86 00 429        | 1   | 'O' ring                 |
| 7    | 86 09 429        | 1   | Anti extrusion ring      |
| 8    | 71 20 383        | 1   | Piston                   |
| 9    | 86 29 189        | 1   | Piston seal              |
| 10   | 86 29 190        | 1   | Guide ring               |
| 11   | 86 00 403        | 1   | 'O' ring                 |
| 12   | 93 63 023        | 1   | Grub screw               |
| 13   | 71 05 050        | 1   | Bush                     |
| 14   | 09 01 124        | 2   | Greaser - angle          |
| 15   | 03.028.08        | 2   | Restrictor union         |
| 16   | 80 03 001        | 1   | Plug                     |
| 17   | 86 50 103        | 3   | Bonded seal              |
|      | <b>86 99 228</b> |     | <b>SEAL KIT</b>          |



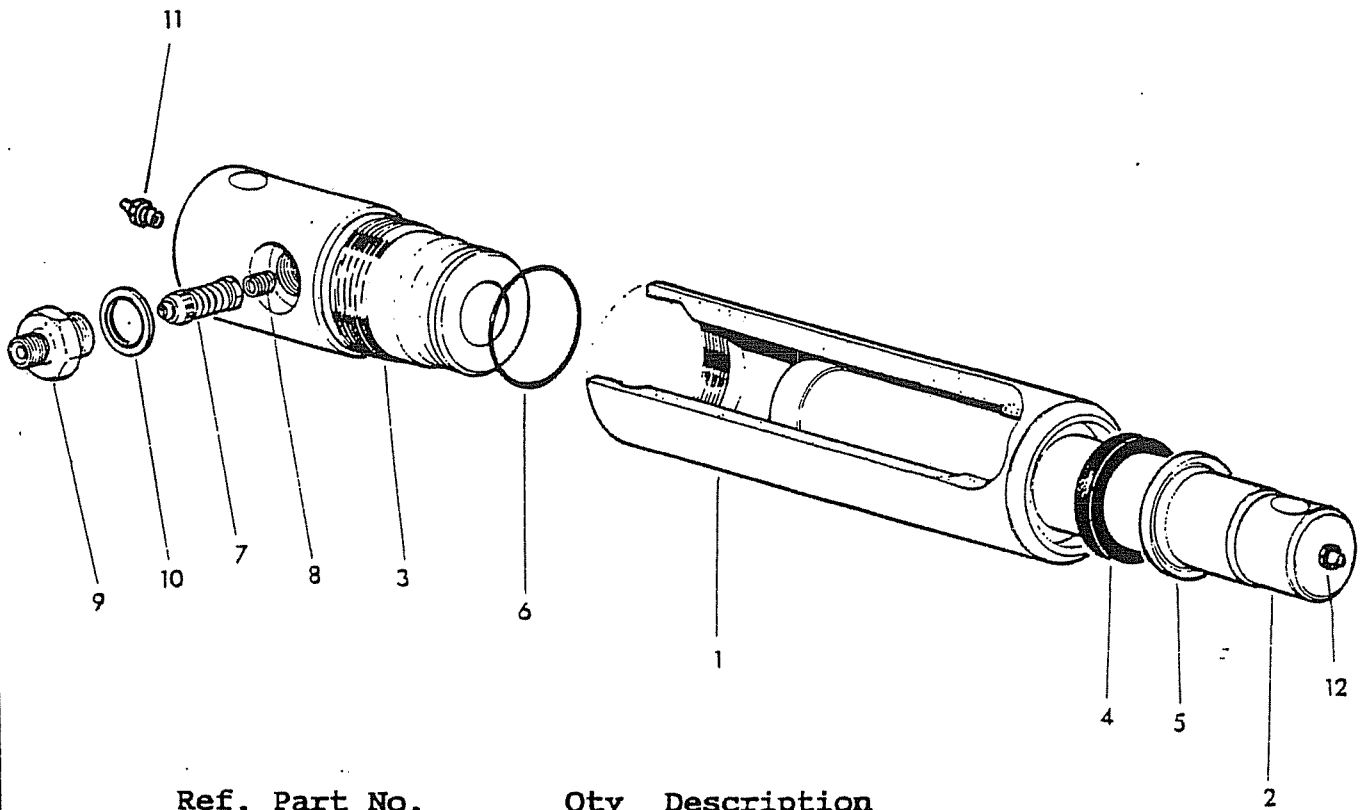


| Ref. | Part No.        | Qty | Description               |
|------|-----------------|-----|---------------------------|
|      | <b>41015.03</b> |     | <b>REACH RAM ASSEMBLY</b> |
| 1    | 41036.01        | 1   | Ram barrel                |
| 2    | 11 86 512       | 1   | Gland housing             |
| 3    | 86 29 164       | 1   | Gland seal                |
| 4    | 86 29 147       | 1   | Piston rod wiper seal     |
| 5    | 86 00 306       | 1   | 'O' ring                  |
| 6    | 86 09 306       | 1   | Anti extrusion ring       |
| 7    | 41037.01        | 1   | Piston rod                |
| 8    | 71 05 050       | 1   | Bush                      |
| 9    | 71 20 368       | 1   | Piston                    |
| 10   | 86 29 156       | 1   | Piston seal               |
| 11   | 93 63 023       | 1   | Grub screw socket headed  |
| 12   | 09 01 121       | 2   | Greaser                   |
| 13   | 86 27 157       | 1   | Guide ring                |
| 14   | 81 30 046       | 1   | Restrictor union          |
| 15   | 81 30 066       | 1   | Restrictor union          |
| 16   | 86 50 103       | 2   | Bonded seal               |

86 99 217

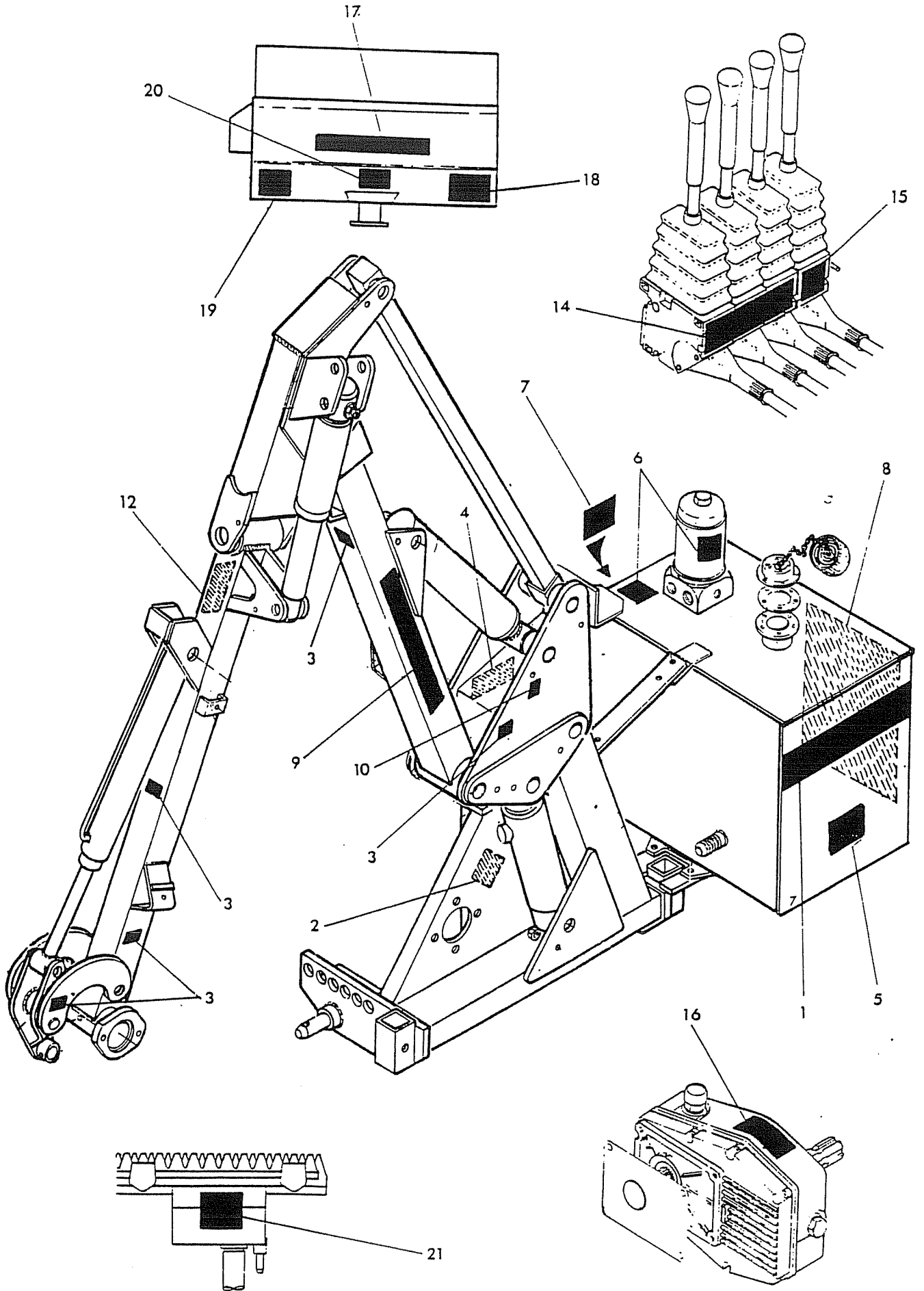
SEAL KIT

**BREAKAWAY RAM**



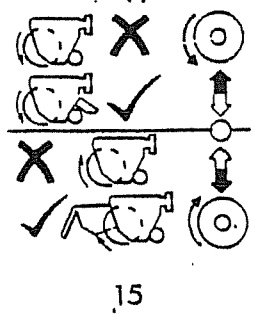
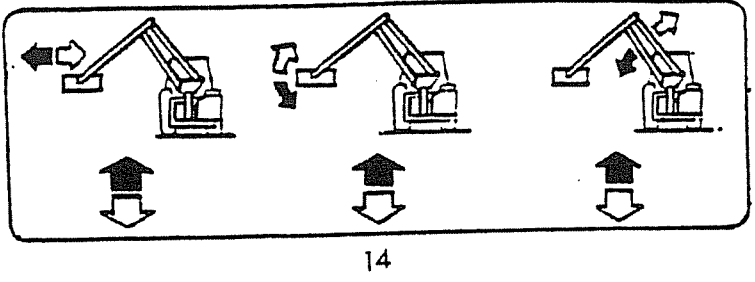
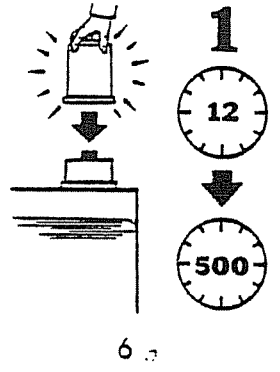
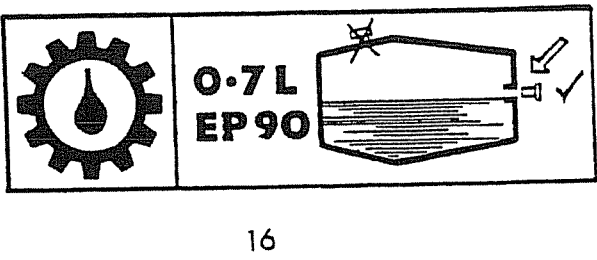
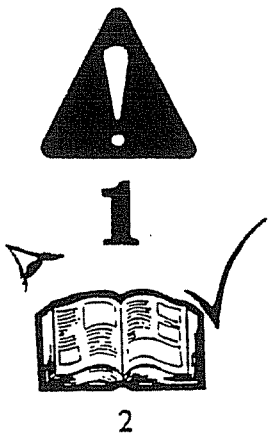
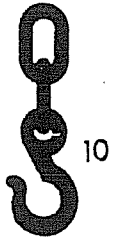
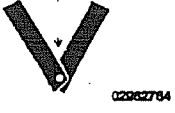
| Ref. Part No.   | Qty | Description                   |
|-----------------|-----|-------------------------------|
| <b>41322.02</b> |     | <b>BREAKAWAY RAM ASSEMBLY</b> |
| 1 71 91 308     | 1   | Ram barrel                    |
| 2 71 91 051     | 1   | Rod                           |
| 3 71 91 299     | 1   | Ram base                      |
| 4 86 29 158     | 1   | Rod seal                      |
| 5 85 29 152     | 1   | Wiper seal                    |
| 6 86 00 302     | 1   | 'O' ring                      |
| 7 81 30 189     | 1   | Relief valve                  |
| 8 81 16 011     | 1   | Spring                        |
| 9 81 30 083     | 1   | Relief valve body             |
| 10 86 50 104    | 1   | Bonded seal                   |
| 11 09 01 121    | 2   | Greaser straight              |





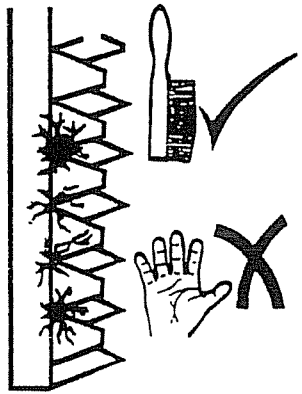
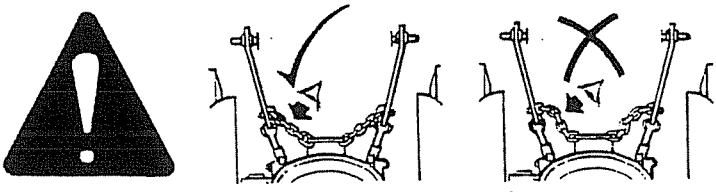
| Ref. Part No.     | Qty       | Description                                      |
|-------------------|-----------|--|
| <b>STICKERS</b>   |           |  |
| <b>MACHINE</b>    |           |  |
| 1                 | 09.106.02 | 1 Bomford  |
| 2                 | 71 05 130 | 1 Read book first                                |
| 3                 | 0096 2764 | 6 Pinch point                                    |
| 4                 | 71 35 295 | 1 Tighten check chains                           |
| 5                 | 09.980.14 | 1 B315   |
| 6                 | 12 90 023 | 2 Oil filter instructions                        |
| 7                 | 0075 6494 | 1 Fitting P.T.O. shaft                           |
| 8                 | 12 90 391 | 1- General safety                                |
| 10                | 12 90 074 | 1 Sling here                                     |
| 12                | 12 90 403 | 1 Breakaway return warning                       |
| 13                | 12 90 079 | 1 Beware arm projection -despatched loose in cab |
| 14                | 12 90 368 | 1 Arm controls                                   |
| 15                | 12 90 338 | 1 Rotor controls/cutterbar on-off - TI only      |
| 16                | 12 90 030 | 1 Gearbox oil instructions                       |
| <b>FLAIL HEAD</b> |           |  |
| 18                | 12 90 341 | 1 Guarding                                       |
| 19                | 12 90 377 | 1 Instructions                                   |
| <b>CUTTERBAR</b>  |           |  |
| 21                | 12 90 078 | 1 Keep fingers away                              |

3 **PINCH POINTS**



**⚠ DANGER ⚠**  
BEWARE AUTOMATIC BREAKAWAY  
RETURN. KEEP WELL CLEAR OF THE  
FRONT OF THE ARM AND HEAD.

12



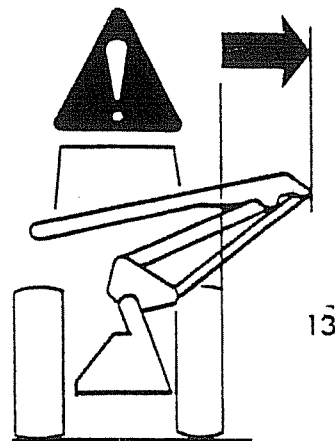
Peel off sticker and affix to tractor in operators view.

Vignette à coller au poste de conduite de votre tracteur  
bain en vue du conducteur.

**⚠ DANGER ⚠**

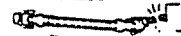
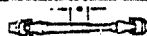
**FAILING TO FOLLOW SAFETY MESSAGES AND OPERATING INSTRUCTIONS CAN CAUSE SERIOUS INJURY OR DEATH TO OPERATOR OR OTHERS IN AREA.**

1. Only operate mowers and other implements on tractor and lawn mower tractors to prevent misuse, abuse and accidents. Practice before operating.
2. Operate only with safety cab or roll bars to prevent injury and possible crushing death from overturn. Allow no riders on machine. Falling off can cause serious injury or death by being run over by the tractor or by being cut by the mower. Allow no bystanders, especially children, near the tractor/mower.
3. Operator and assistants must wear a hard hat. Safety glasses and shoes to prevent injury from falling or thrown objects.
4. Before transport, engage all transport devices. See operator manual.
5. Block up or support machine securely before placing any part of the body beneath the machine to prevent crushing, injury or death from sudden dropping. Make certain area is clear before lowering.
6. Make certain lights, reflectors, and in U.S.A., the SMV sign is clearly visible. Follow highway regulations. Slow down at night, in turns and on hillsides.
7. Before dismounting, secure the mower in transport position or lower to ground. Stop P.T.O., put tractor in park or set hand brake, stop engine and remove the key. Never mount or dismount a moving vehicle to prevent possible injury or death.
8. Each rear tire must have a minimum of 1000lbs contact with ground to prevent lateral instability and possible tip-over and bodily injury. Widen wheel track and add weights if needed. Contact manufacturer for counterweight procedure.
9. Rear mounted tillage mowers move centre of gravity to rear and remove weights from front wheels. Add front ballast until at least 20% of the tractor's weight is on front wheels to prevent rearing up, loss of steering control and possible injury.
10. Never operate unit without an operator guard to prevent injury from falling or thrown objects. Keep bystanders at a safe distance. Stop cutting if they enter the danger area.
11. Never operate the machine without the correct tillage head guards in position. Ensure they are in good condition.
12. Beware overhead obstructions. Keep at least five feet away from power lines to prevent accidental contact or electric shock and possible serious injury and death.
13. Transport carefully! Slow down even more on slopes and when turning. Never turn up a slope sharply or at high speed and use extra care in rough or bumpy areas to prevent overturn and possible crushing injury or death. If you view to the rear is obscured it is your responsibility to install mirrors that provide a rear view to prevent accidents from blind spots.

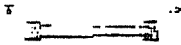


**⚠ DANGER**

1. MAKE CERTAIN DRIVELINE ARE OF THE CORRECT LENGTH AND SECURELY ATTACHED. DRIVELINE SEPARATION AND OR PTO SHAFT FAILURE CAN CAUSE INJURY OR DEATH (See Operator's Manual for procedure)



2. MAKE CERTAIN THAT DRIVELINE SHELDS ARE INSTALLED CORRECTLY AND TURN FREELY TO PREVENT INJURY OR DEATH FROM ENTANGLEMENT



3. IF DRIVELINE SHELDS HAVE TETHER CHAINS ATTACH TETHER CHAINS SECURELY TO MOWER AND TRACTOR TO PREVENT SHIELD ROTATION BELL AND OR SHIELD FAILURE AND SERIOUS INJURY OR DEATH

4. 540 PTO RPM UNLESS SPECIFICALLY MARKED OTHERWISE

**⚠ DANGER**

**KEEP AWAY**

**⚠ DANGER**

**ROTATING DRIVELINE**

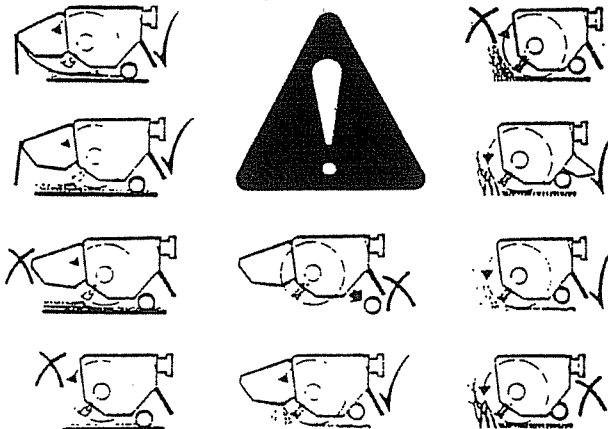
**KEEP AWAY**

**⚠ DANGER**

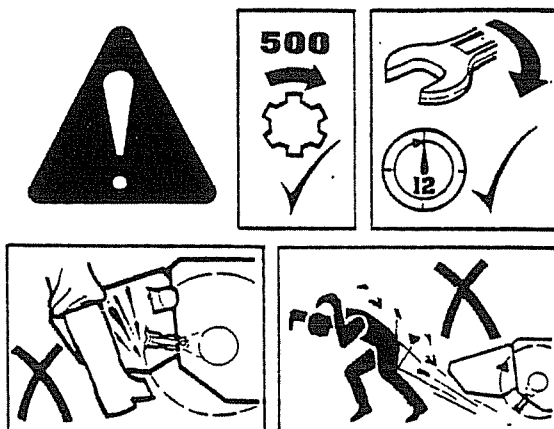
**KEEP AWAY**



8



18



19