

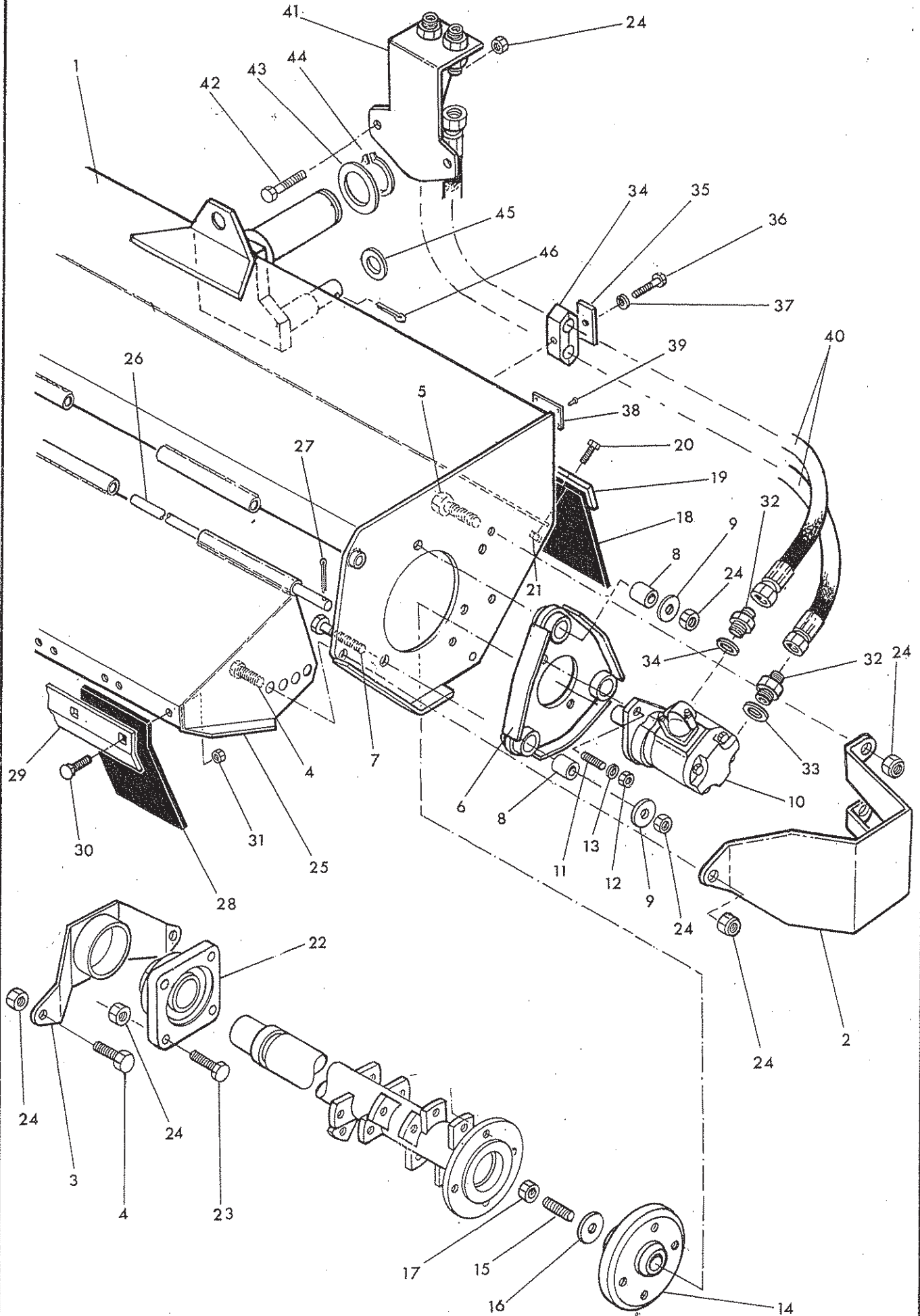
# SPARE PARTS MANUAL

## FOR BEST PERFORMANCE....

To be assured of the latest design improvements purchase your genuine replacements from the original equipment manufacturer

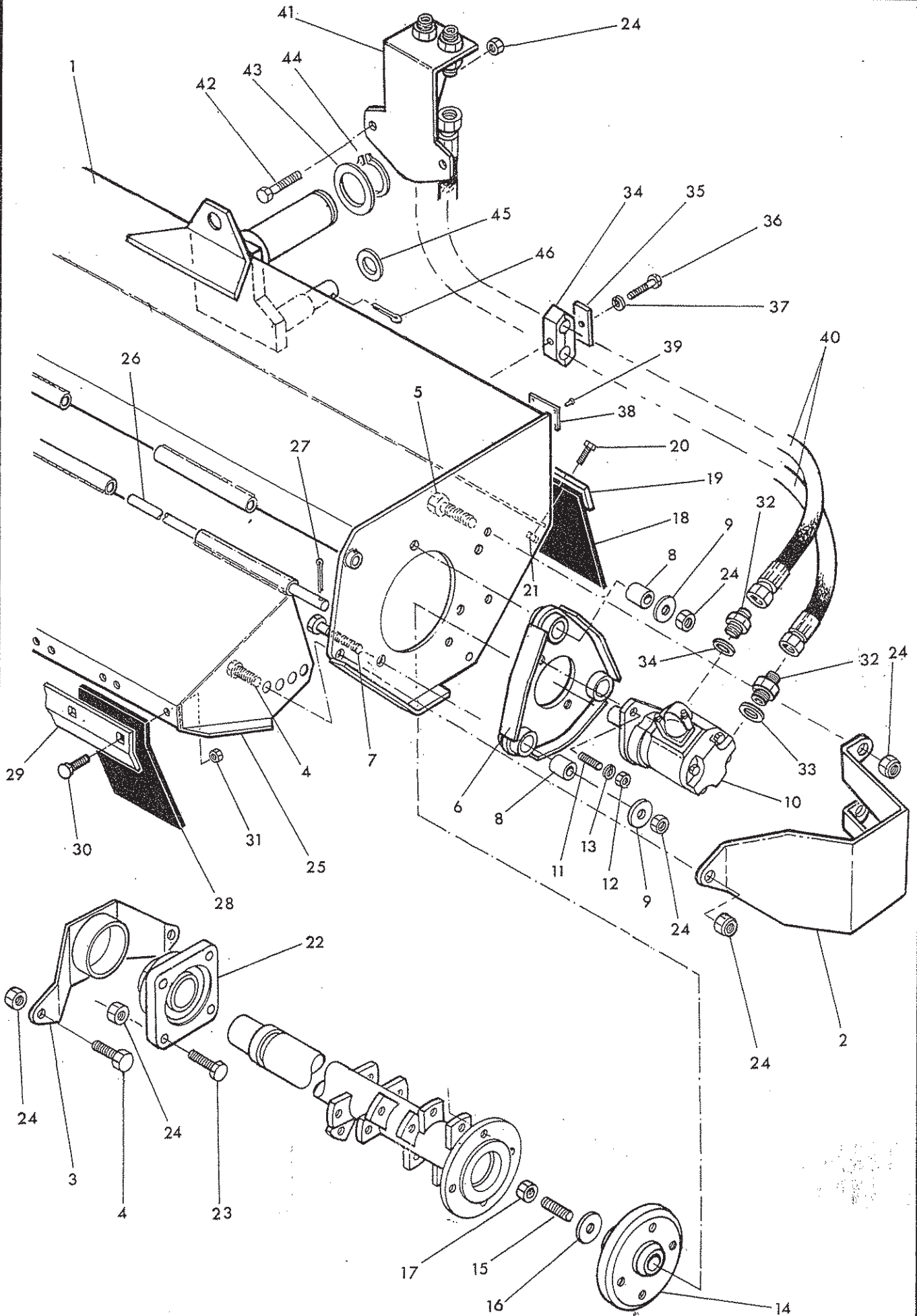
Always quote machine type and serial number as well as the part number.

Design improvement may have altered some of the parts listed in this manual - The latest part will always be supplied when it is interchangeable with an earlier one.





Ref.	Part No.	Qty.	Description
<b>FLAIL HEAD CASING</b>			
1	41282.08	1	Casing – R.Hand outboard motor
	41282.06	1	Casing – R.Hand inboard motor
	41282.07	1	Casing – L.Hand outboard motor
	41282.09	1	Casing – L.Hand inboard motor
2	42495.01	1	Motor cover
3	42496.01	1	Bearing cover free end
4	93 13 066	2	Setscrew M12 x 30
5	93 13 056	3	Setscrew M12 x 25
6	09.132.02	1	Motor mounting plate
7	92 13 126	3	Bolt M12 x 60
8	03.871.01	3	Rubber bush
9	02.824.01	3	Washer dia 13
10	08.785.05	1	Hydraulic motor
11	04.282.56	2	Stud M10 x 37
12	91 13 005	2	Plain nut M10
13	91 00 205	2	Spring washer dia 10
14	03.833.01	1	Drive plate
15	03.960.02	1	Stud 3/8" UNF x 1 1/8" long
16	03.959.02	1	Special plain washer 3/8" dia
17	01 41 003	1	Self locking nut 3/8" UNF
18	41289.02	1	Rear flap
19	41290.02	1	Clamp strip
20	93 13 034	9	Setscrew M8 x 16
21	91 43 004	9	Self locking nut M8
22	03.008.01	1	Flanged bearing
23	93 13 076	4	Setscrew M12 x 35
24	91 43 006	14	Self locking nut M12



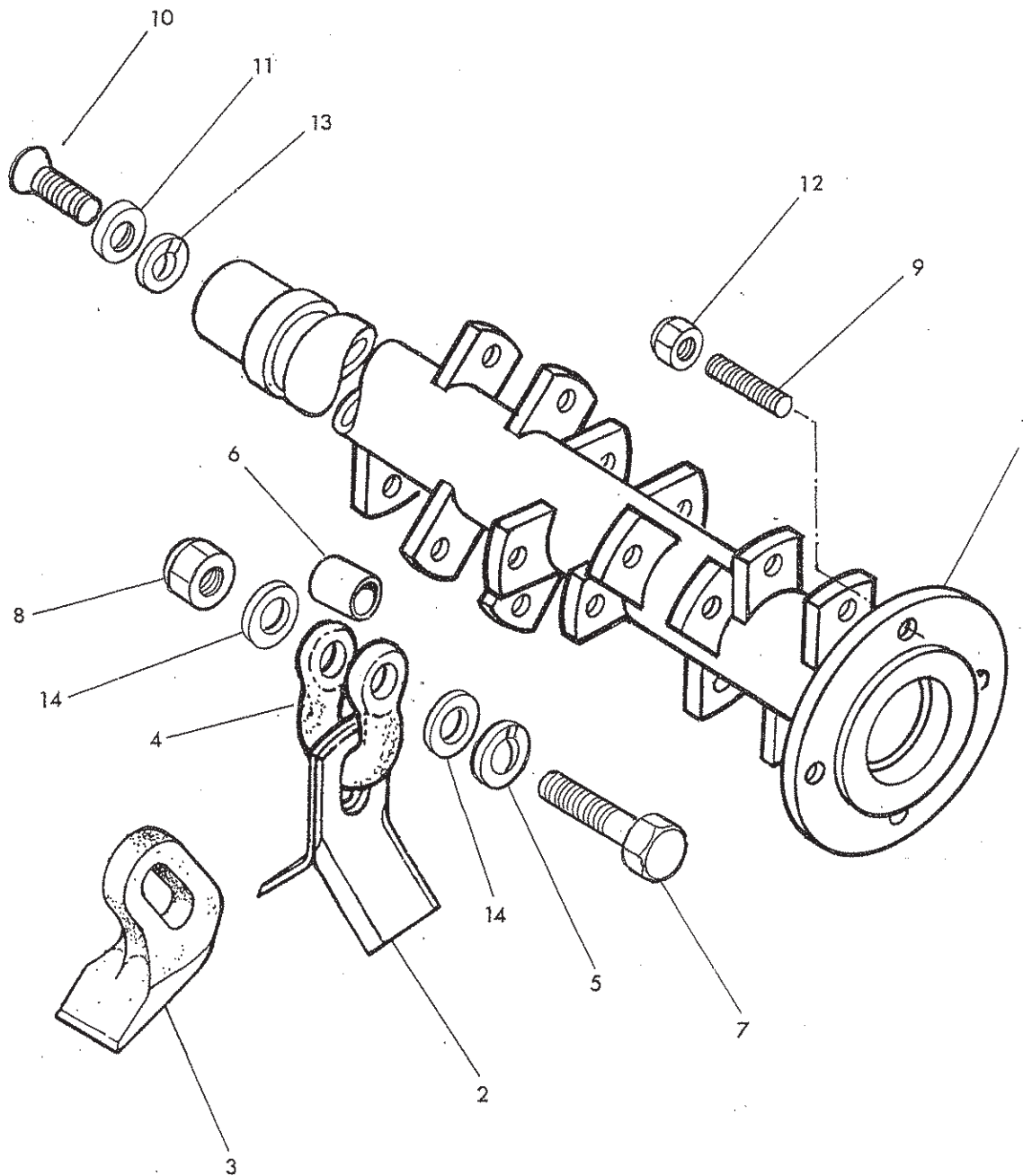


Ref.	Part No.	Qty.	Description
------	----------	------	-------------

### FLAIL HEAD CASING - continued

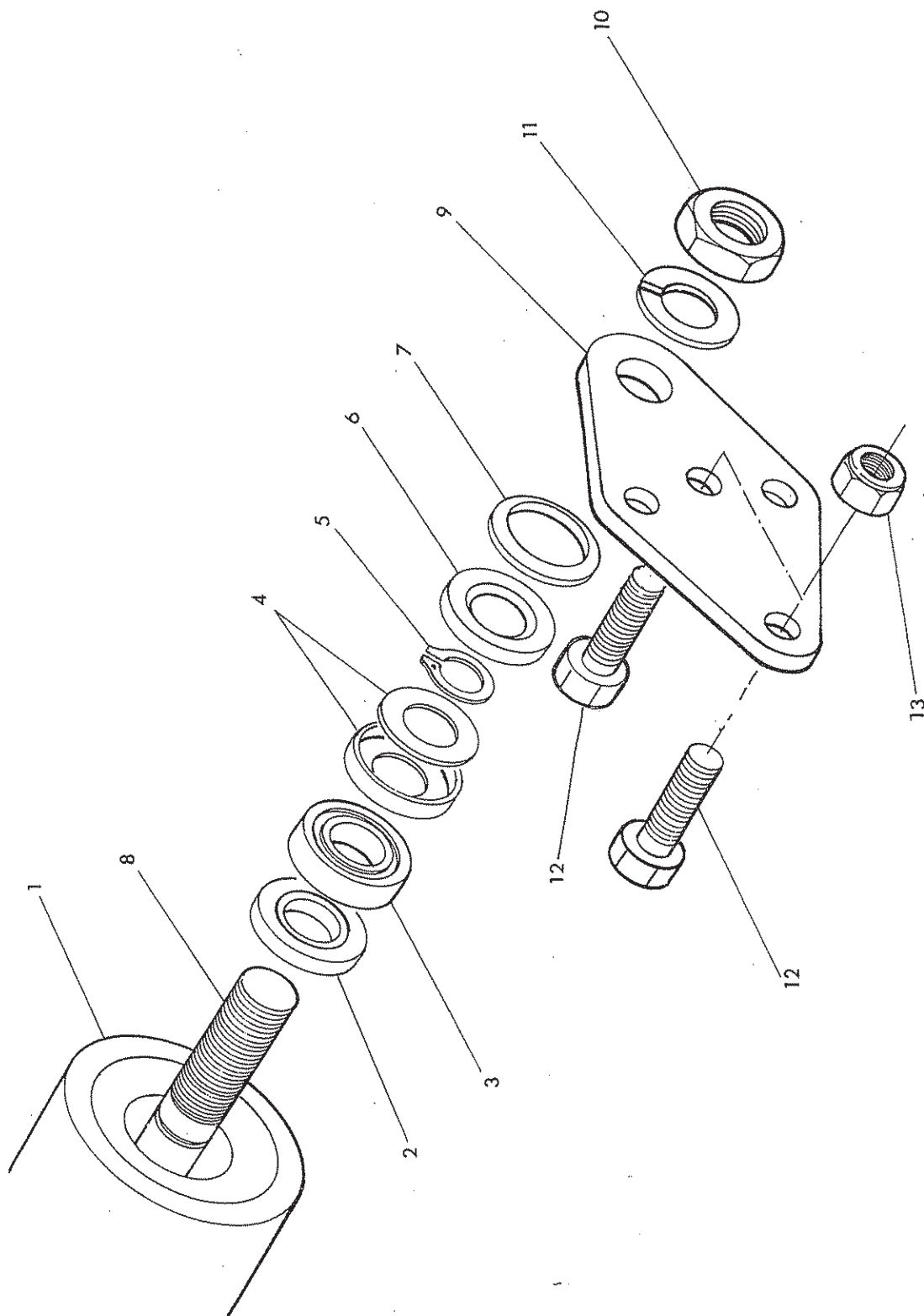
25	41283.02	1	Front hood
26	41293.02	1	Hood pivot bar
27	95 01 325	2	Split pin dia 4 x 32
28	41296.02	7	Front flap
29	41291.02	1	Clamp strip
30	92 93 054	14	Bolt - cup square M8 x 25
31	91 43 004	14	Self locking nut M8
32	85 81 362	2	Union 3/4"BSP - M26 MM
33	86 50 106	2	Bonded seal 3/4"BSP
34	06.430.09	1	Hose clamp
35	06.418.03	1	Clamp plate
36	92 13 094	1	Bolt M8 x 45
37	91 00 204	1	Spring washer dia 8
38	13 35 246	1	Serial No. plate
39	71 03 230	4	Pop rivet 1/8" dia
40	85 01 279	2	Hose M26 x 1150 long
41	41297.03	1	Hose bracket
42	93 13 086	2	Setscrew M12 x 40
43	10 90 037	1	Retaining washer
44	04 06 247	1	External circlip dia 4.7
45	01 00 109	1	Plain washer 1" dia
46	95 01 406	1	Split pin dia 5 x 40
	<b>08.875.02</b>		<b>SEAL KIT for hydraulic motor</b>







Ref.	Part No.	Qty.	Description
<b>ROTOR ASSEMBLY</b>			
1	41284.02	1	Rotor
2	71 90 166	56	Flail – grass
3	71 90 463	28	Flail – universal
4	05.895.01	28	Shackle
5	91 00 207	28	Spring washer dia 16
6	02.807.01	28	Spacer
7	05.775.10	28	Bolt – Special M14 fine x 94 long
8	05.968.06	28	Self locking nut M14 fine
9	03.917.01	4	Stud M10 fine x 36 long
10	93 53 073	1	Setscrew countersunk M12 x 35
11	42503.01	1	Washer – special countersunk dia 12
12	05.968.02	4	Self locking nut M10 fine
13	91 00 206	1	Spring washer dia 12
14	05.281.04	56	Plain washer dia 16







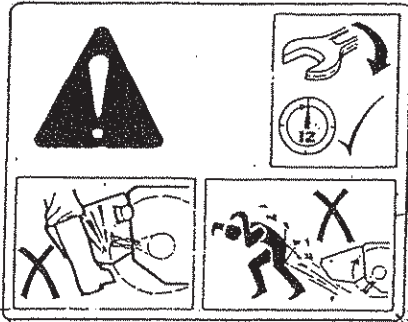
Ref.	Part No.	Qty.	Description
			<b>ROLLER ASSEMBLY</b>
	41301.02	1	Roller assembly comprising :-
1	41301.33	1	Roller
2	04.456.07	2	Seal
3	04.456.11	2	Bearing
4	04.456.06	2	Labyrinth seal
5	04.456.04	2	External circlip
6	04.456.08	2	V seal
7	04.456.05	2	Bearing retainer
8	41301.34	1	Roller shaft
9	41285.01	2	Roller bracket
10	91 13 008	4	Plain nut M20
11	91 00 208	2	Spring washer dia 20
12	93 13 076	4	Setscrew M12 x 35
13	91 43 006	4	Self locking nut M12



### FLAIL PARTS INFORMATION

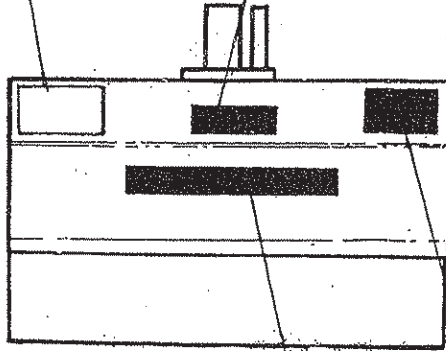
McConnel Flail Mowers use dynamically balanced and mated system components for Cutter Shafts (Rotors), Knives (Flails), Knife Hangers (Shackles), Bolts, Bushes, Rollers, Drivetrain Components, Bearings Belts and Belt Pulleys. McConnel parts are made and tested to meet close-tolerance specifications of balance, quality and consistency that assure long, trouble-free service. "Will-Fit" parts do not ordinarily meet McConnel Standards and could reduce Mower performance, void warranties, and present an increase in the safety hazard potential.

**DON'T GAMBLE!**  
 USE GENUINE McCONNEL SERVICE PARTS  
 See your McConnel dealer.



2

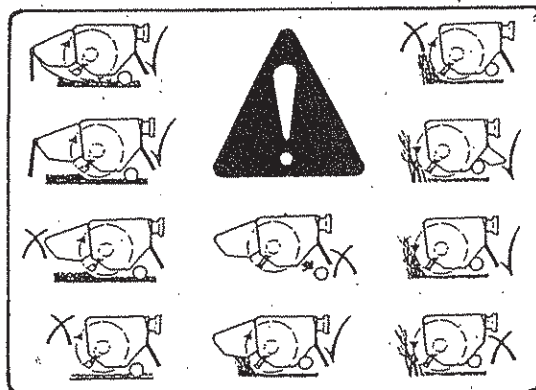
4



1

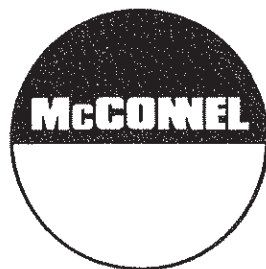
3

# McCONNEL





Ref.	Part No.	Qty.	Description
<b>STICKERS</b>			
1	12 90 255	1	McConnel
2	12 90 462	1	Flail head instructions
3	12 90 341	1	Flail head guarding
4	12 90 523	1	Use McConnel spares



McConnel Limited, Temeside Works, Ludlow, Shropshire SY8 1JL. England.  
Telephone: 01584 873131. Facsimile: 01584 876463. [www.mcconnel.com](http://www.mcconnel.com)