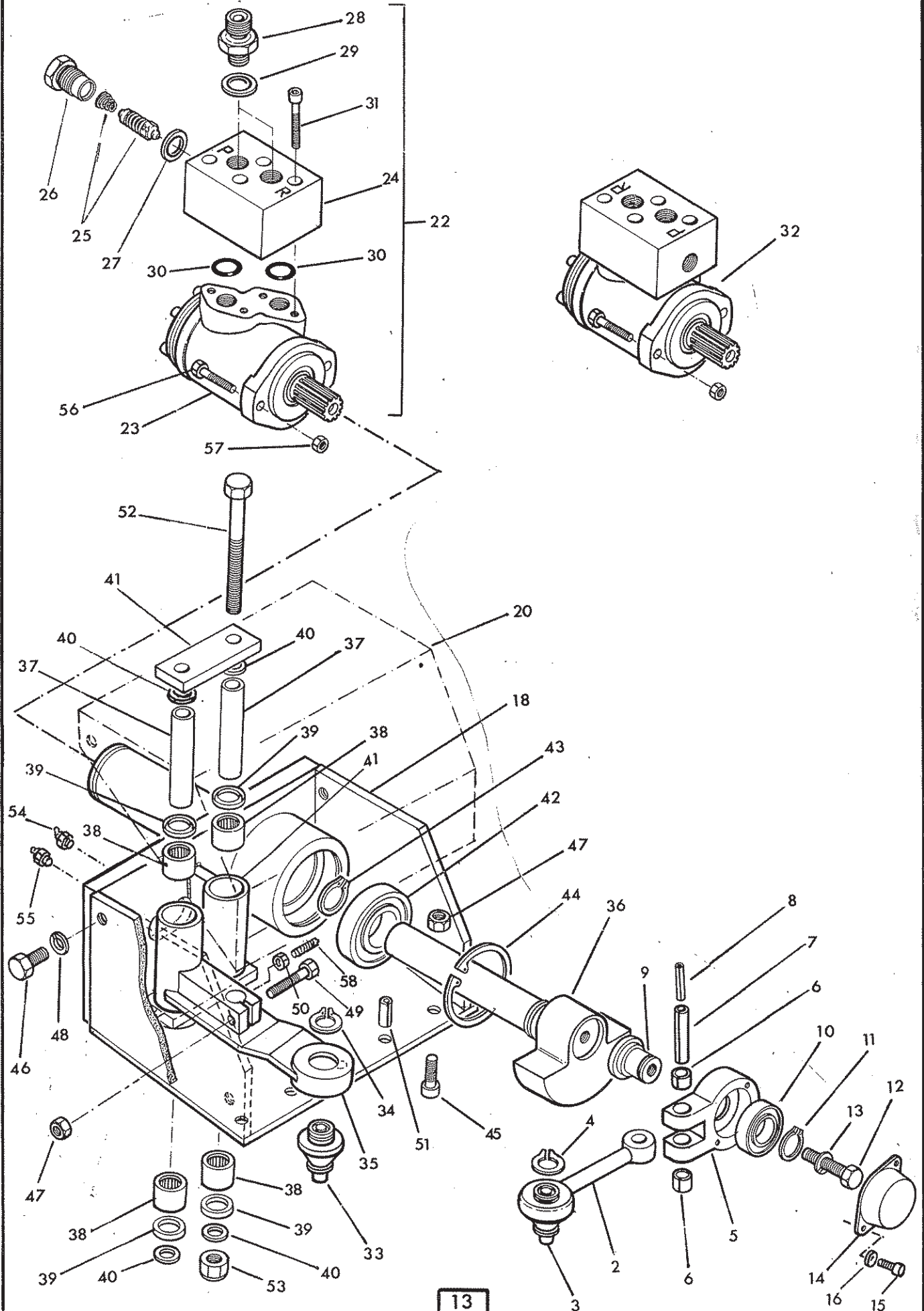


CUTTERBAR DRIVE



McCOMEL



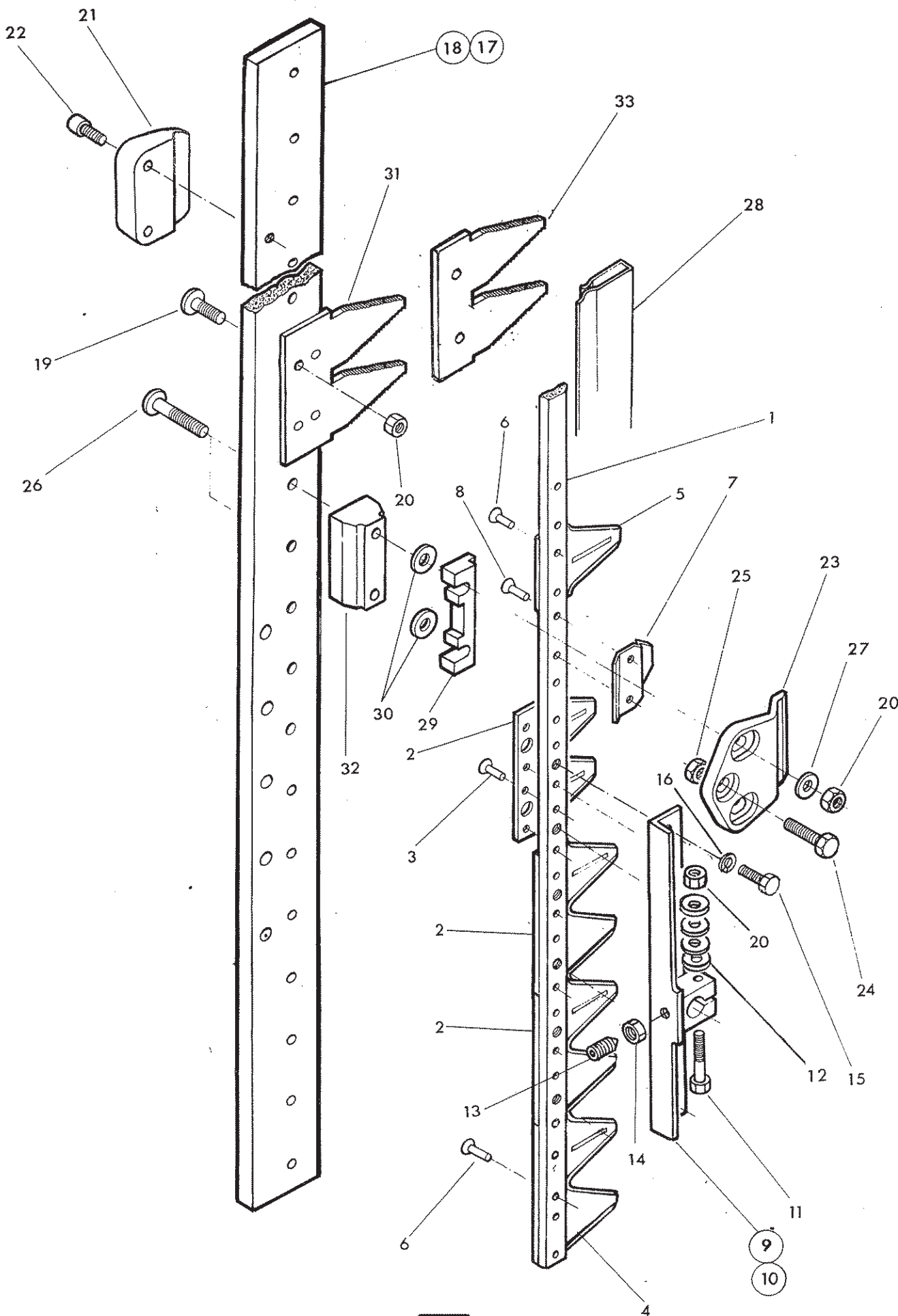


Ref. Part No.	Qty	Description
CUTTERBAR MOUNTING AND DRIVE		
1	1	Con rod - L.Hand compr:-
2	1	Con rod shaft
3	1	Swivel
4	1	External circlip
5	1	Bearing housing
6	2	Bush
7	1	Spring dowel
8	1	Spring dowel
9	1	Spigot
10	1	Bearing
11	1	External circlip
12	1	Bolt
13	1	Spring washer
14	1	Bearing cap
15	2	Capscrew
16	2	Spring washer
17	1	Con rod-R.Hand-not illus.components as L.Hand
18	1	Mounting bracket - L.Hand
19	1	Mounting bracket - R.Hand - not illus.
20	1	Drive cover - L.Hand
21	1	Drive cover - R.Hand - not illus.-
22	1	Motor assy. L.Hand compr:-
23	1	Motor
24	1	Valve plate
25	1	Relief valve
26	1	Relief valve cap
27	1	Bonded seal
28	2	Adaptor
29	2	Bonded seal
30	2	'O' ring
31	4	Capscrew
32	1	Motor assy. R.Hand - components as L.Hand
33	1	Swivel
34	1	External circlip
35	1	Rocker arm
36	1	Crankshaft
37	2	Sleeve
38	4	Bearing
39	4	Sealing ring
40	4	Thrust washer
41	2	Control link
42	1	Bearing
43	1	External circlip
44	1	Internal circlip
45	3	Capscrew
46	4	Setscrew
47	4	Self locking nut
48	4	Spring washer
49	1	Capscrew
50	1	Plain nut
51	2	Spring dowel
52	2	Bolt
53	2	Self locking nut
54	1	Greaser
55	1	Greaser
56	2	Bolt
57	2	Self locking nut
58	1	Grubscrew
86 99 246		SEAL KIT -hydraulic motor

CUTTERBAR



McCORMICK





Ref.	Part No.	Qty	Description
CUTTERBAR ASSEMBLIES			
	41.074.03	1	Knife assembly
1	41470.01	1	Knife back
2	41471.01	3	Knife section-double-knife heel pos.
3	10 90 062	12	Rivet
4	41471.02	11	Knife section - double
5	41471.03	1	Knife section - single
6	10 90 063	36	Rivet
7	41472.01	5	Abutment plate
8	10 90 064	20	Rivet
9	41.076.02	1	Knife heel - R.hand
10	41.076.01	1	Knife heel - L.hand
11	92 13 104	1	Setscrews
12	10 90 119	4	Disc spring
13	93 63 044	1	Grubscrew
14	91 13 004	2	Plain nut
15	41477.01	4	Setscrew
16	91 00 204	4	Spring washer
17	41.078.04	1	Fingerbar - R.hand - not illus.
18	41.078.03	1	Fingerbar - L.hand
19	10 90 073	20	Dome headed bolt
20	91 43 004	30	Self locking nut
21	41475.01	1	Slide plate
22	91 43 024	2	Capscrew
23	41476.01	5	Knife clip
24	93 13 064	5	Setscrew
25	91 13 004	5	Plain nut
26	10 90 077	10	Dome headed bolt
27	10 90 079	10	Washer
28	10 90 152	1	Knife guard

CUTTERBAR ASSEMBLY - UNIVERSAL ONLY

29	41473.01	5	Abutment block
30	10 90 078	10	Washer
31	41474.01	15	Finger

CUTTERBAR ASSEMBLY - GRASS ONLY

32	41473.02	5	Abutment block
33	41474.02	15	Finger