

SPARE PARTS MANUAL

FOR BEST PERFORMANCE....

To be assured of the latest design improvements purchase your genuine replacements from the original equipment manufacturer

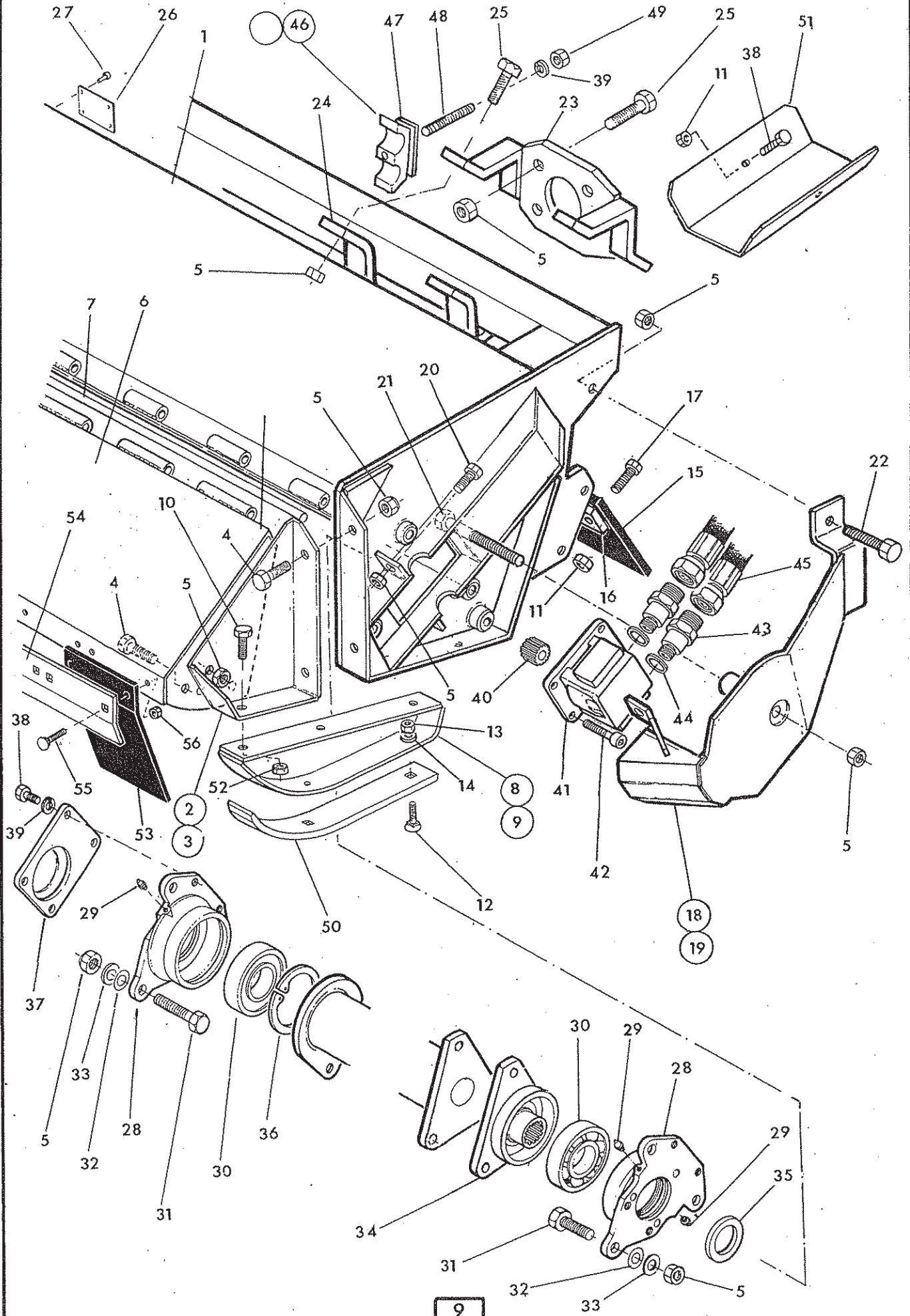
Always quote machine type and serial number as well as the part number.

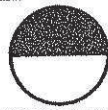
Design improvement may have altered some of the parts listed in this manual - The latest part will always be supplied when it is interchangeable with an earlier one.

FLAIL CASING



McDOWELL



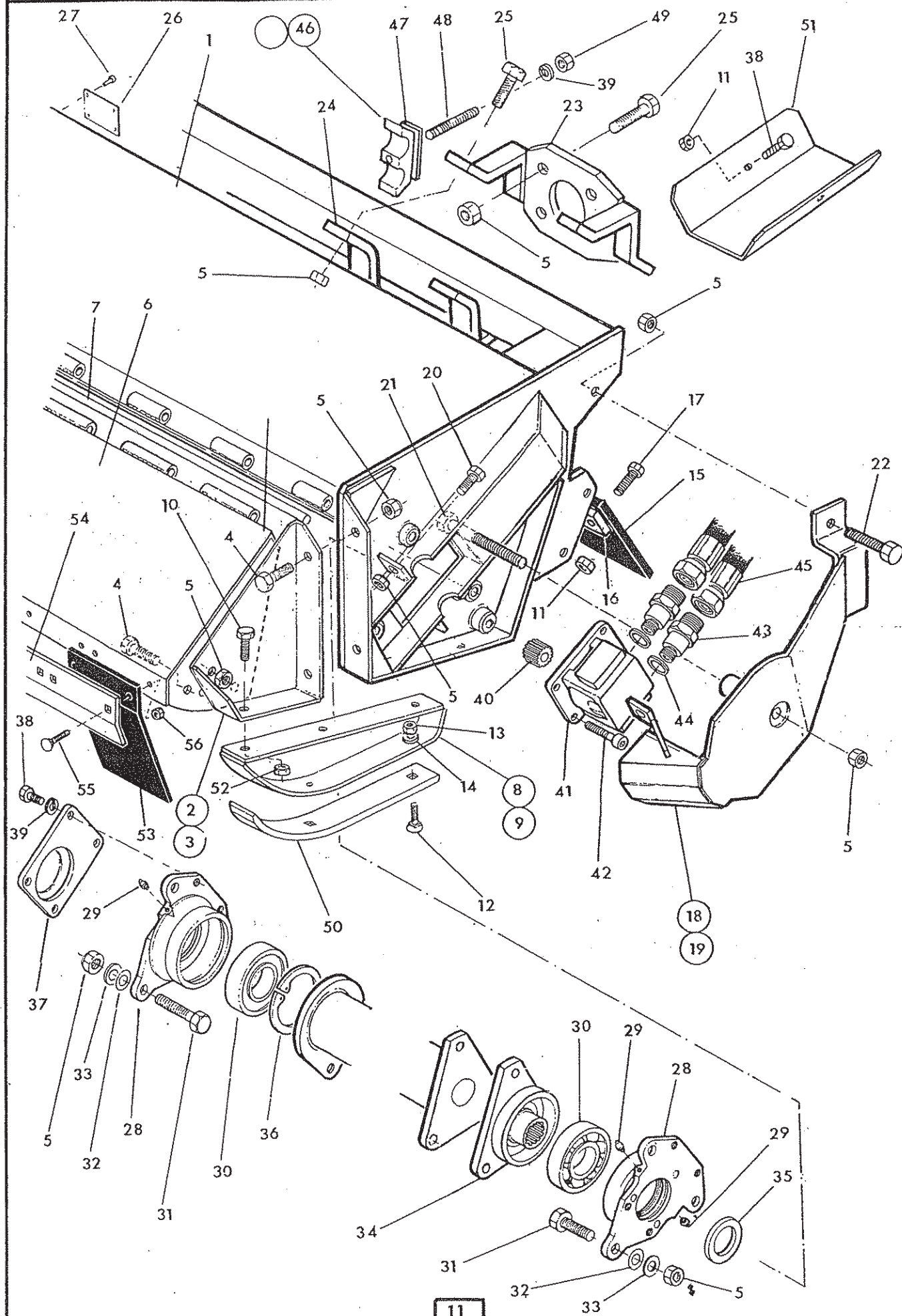


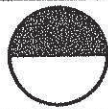
| Ref | Part No. | Qty. | Description |
|---|-----------|---------|--|
| FLAIL HEAD CASING – for 1.2M Tri mount rotor multicut sliding head | | | |
| 1 | 41685.01 | 1 | Casing |
| 2 | 72 90 387 | 1 | Hood bracket R. Hand – not illus. |
| 3 | 72 90 388 | 1 | Hood bracket L. Hand |
| 4 | 12.714.35 | 6 | Special setscrew M16 x 1.5 p x 35 long |
| 5 | 91 00 028 | 25 | Special self locking nut M16 x 1.5p |
| 6 | 41695.01 | 1 | Hood (Std.) |
| | 41695.02 | 1 | Hood (Heavy Duty) |
| 7 | 41700.01 | 1 | Hood pivot pin |
| 8 | 72 90 389 | 1 | Skid R.Hand – not illus |
| 9 | 72 90 390 | 1 | Skid L. Hand |
| 10 | 03 11 085 | 6 | Setscrew ½" UNF x 1 1/4" long |
| 11 | 91 43 005 | 11 | Self locking nut M10 |
| 12 | 60 12 034 | 6 | Tine bolt 7/16" UNC |
| 13 | 01 42 004 | 6 | Self locking nut 7/16" UNC |
| 14 | 01 00 104 | 6 | Plain washer 7/16" dia |
| 15 | 71 90 324 | 1 | Rear flap |
| 16 | 71 90 313 | 1 | Clamp strip |
| 17 | 93 13 065 | 9 | Setscrew M10 x 30 |
| 18 | 42282.03 | 1 | Motor cover L. Hand |
| 19 | 42282.04 | 1 | Motor cover R. Hand – not illus |
| 20 | 30.073.25 | 2 | Special bolt M16 x 1.5p x 40 long |
| 21 | 92 00 034 | 1 | Special bolt M16 x 1.5p x 180 long |
| 22 | 92 00 028 | 2 | Special bolt M16 x 1.5p x 45 long |
| 23 | 71 98 330 | 1 | Clamp plate |
| 24 | 71 98 332 | 2 | Clamp |
| 25 | 12.714.75 | 8 | Special bolt M16 x 1.5p x 75 long |
| 26 | 13 35 246 | 1 | Serial No. plate |
| 27 | 71 03 230 | 4 | Pop rivet 1/8" dia |
| 28 | 71 90 261 | 2 | Bearing housing |
| 29 | 09 01 121 | 4 | Greaser 1/8" dia |
| 30 | 06 00 018 | 2 | Bearing |
| 31 | 92 00 025 | 6 | Special bolt M16 x 1.5p x 50 long |
| 32 | 81 21 043 | as reqd | Shim 016 |
| 33 | 81 21 044 | as reqd | Shim 024 |
| 34 | 43389.03 | 1 | Rotor hub |
| 35 | 71 90 015 | 1 | Motor locating washer |
| 36 | 71 90 022 | 1 | Internal circlip 120 dia |
| 37 | 71 90 444 | 1 | Cover plate |
| 38 | 93 13 292 | 6 | Setscrew M10 x 20 |
| 39 | 91 00 205 | 5 | Spring washer dia 10... |

FLAIL CASING - Continued



McCormick



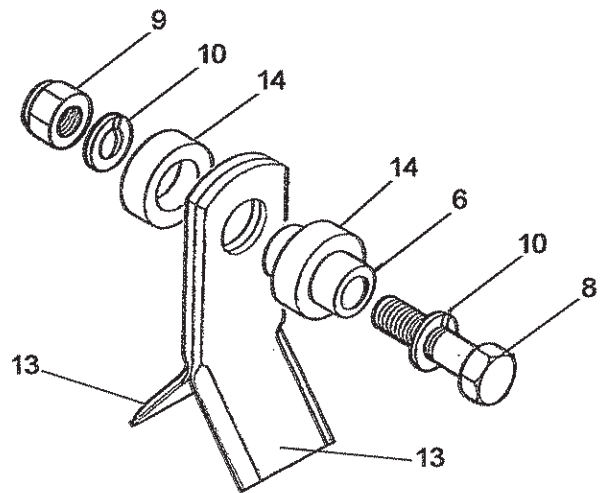
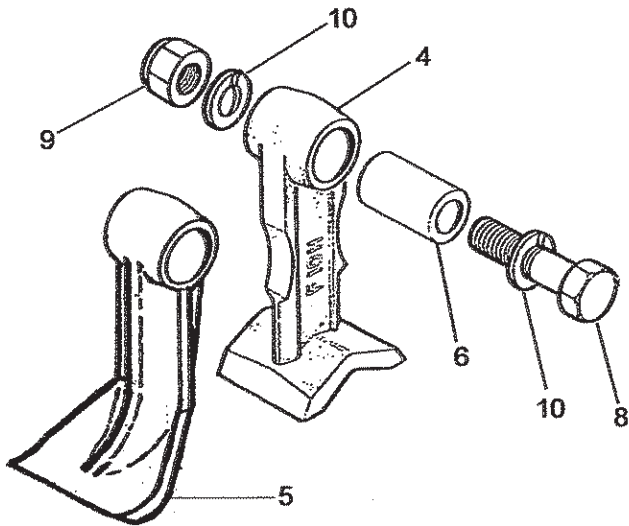
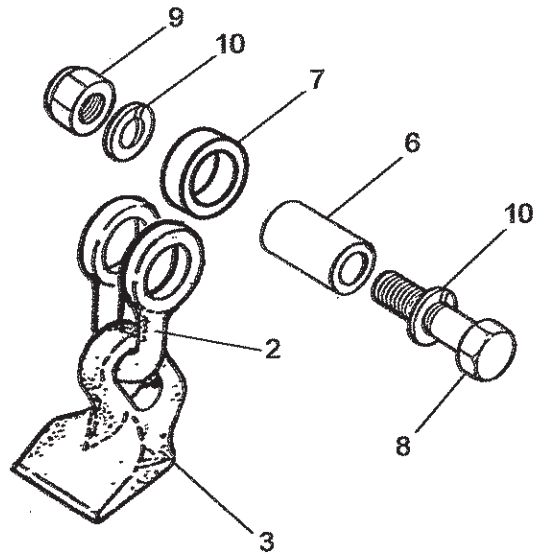
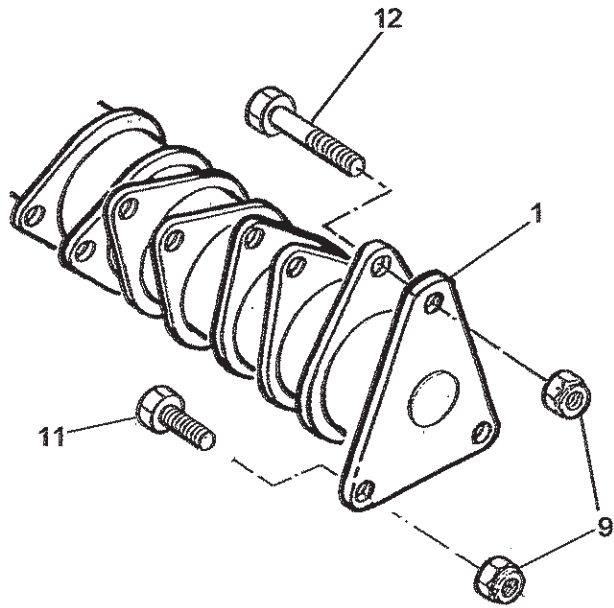


| Ref. | Part No. | Qty. | Description. |
|---------------------------------------|-----------|------|----------------------------------|
| FLAIL HEAD CASING :- Continued | | | |
| 40 | 43390.02 | 1 | Drive coupling |
| 41 | 83 01 304 | 1 | Motor - 65Hp |
| | 83 01 302 | 1 | Motor - 54Hp |
| 42 | 93 00 144 | 4 | Capscrew – self locking M10 x 35 |
| 43 | 85 81 411 | 2 | Adaptor 5/8" BSP-M36 MM |
| 44 | 86 50 105 | 2 | Bonded seal 5/8" BSP |
| 45 | 42732.29 | 2 | Hose M36 x 1900 long |
| 46 | 71 93 063 | 1 | Hose clamp 1" BSP |
| 47 | 06.418.05 | 1 | Clamp plate |
| 48 | 04.282.09 | 1 | Stud M10 x 85 |
| 49 | 91 13 005 | 1 | Hexagon nut |
| 50 | 72 90 391 | 2 | Wear skid |
| 51 | 71 98 333 | 1 | Hose tray |
| 52 | 01 41 005 | 6 | Self locking nut 1/2" UNF |

72 90 375**FRONT FLAP KIT**

| | | | |
|----|-----------|----|---------------------------|
| 53 | 72 90 053 | 8 | Flap |
| 54 | 71 90 304 | 1 | Clamp strip |
| 55 | 92 93 054 | 16 | Bolt – cup square M8 x 25 |
| 56 | 91 43 004 | 16 | Self locking nut M8 |

86 99 236**SEAL KIT – for hydraulic motor**



ROTORS & FLAILS

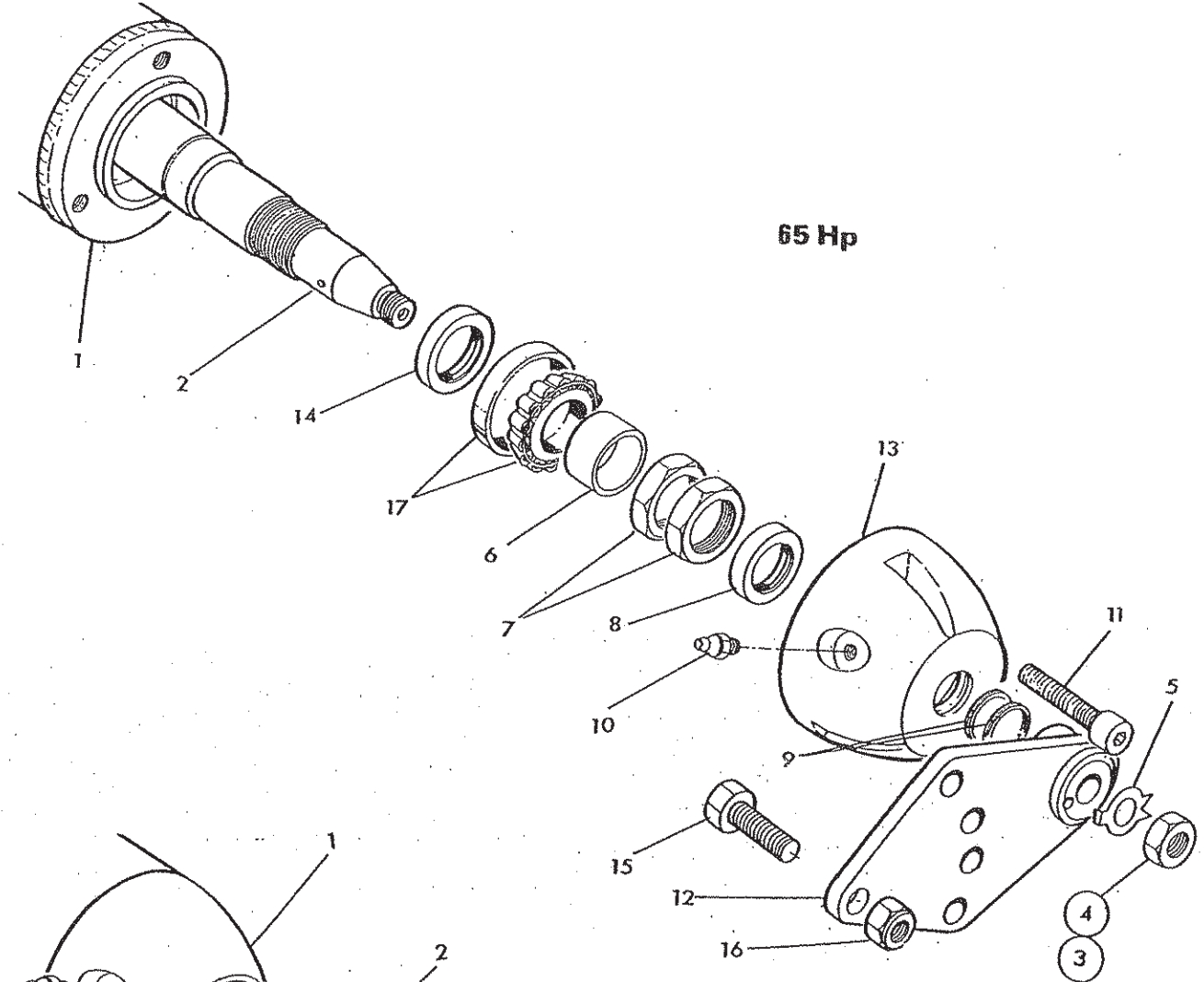
| Ref. | Part No. | Qty. | Description |
|----------------------------|----------|------|-------------------------------------|
| ROTORS & FLAILS | | | |
| 1 | 43391.01 | 1 | Rotor |
| 2 | 7190106 | 24 | Shackle |
| 3 | 7190462 | 24 | Flail |
| 4 | 7314366 | 24 | Flail F10H - Cast |
| | 41391.01 | 24 | Flail F10H - Forged |
| 5 | 7390276 | 24 | Flail - Alternative single edged |
| 6 | 7314223 | 24 | Pivot Bush |
| 7 | 7190172 | 24 | Spacer |
| 8 | 7390025 | 23 | Special Bolt M16 x 1.5p x 83 long |
| 9 | 9100028 | 26 | Special Self-Locking Nut M16 x 1.5p |
| 10 | 0100206 | 48 | Spring Washer 5/8" dia. |
| 11 | 9200028 | 2 | Special Bolt M16 x 1.5p x 45 long |
| 12 | 7390026 | 1 | Special Bolt M16 x 1.5p x 95 long |
| 13 | 7190315 | 48 | Flail |
| 14 | 7190010 | 48 | Spacer |

ROLLERS

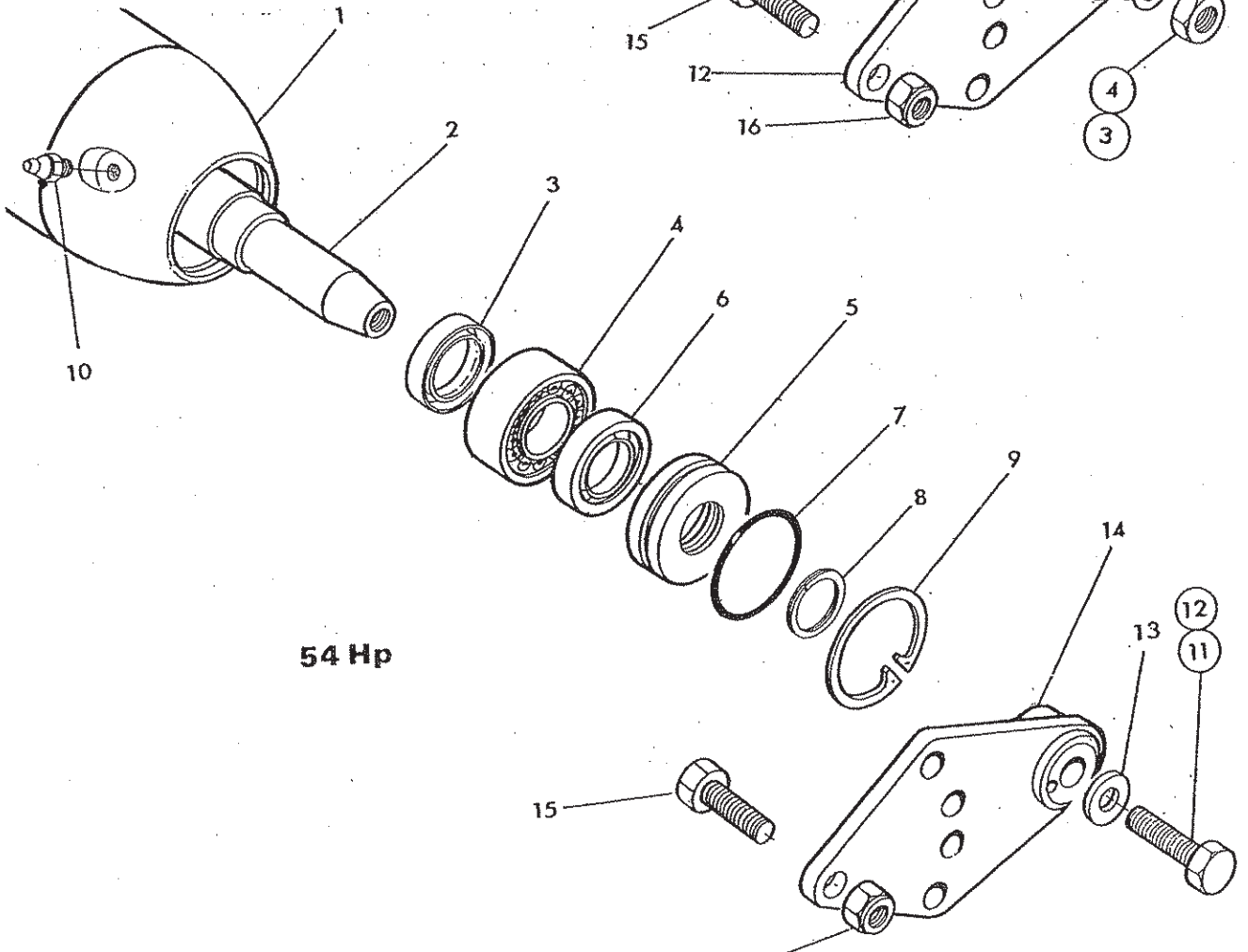


McCORMICK

65 Hp



54 Hp





| Ref | Part No. | Qty. | Description |
|--|-----------|------|------------------------------------|
| ROLLER ASSEMBLIES | | | |
| 42241.29 ROLLER ASSEMBLY 65 Hp | | | |
| 1 | 42241.01 | 1 | Roller |
| | 42242.14 | 1 | Axle assembly incl. :- |
| 2 | 42244.01 | 1 | Axle |
| 3 | 91 13 008 | 1 | Plain nut M20 - R.Hand - not illus |
| 4 | 91 00 026 | 1 | Plain nut M20 - L.Hand |
| 5 | 71 90 023 | 2 | Tab washer |
| 6 | 42245.01 | 2 | Spacer |
| 7 | 42244.01 | 4 | Locknut |
| 8 | 86 29 125 | 2 | Seal |
| 9 | 04 12 120 | 4 | Spirolox ring |
| 10 | 09 01 120 | 2 | Greaser 1/8" BSP straight |
| 11 | 93 43 075 | 6 | Capscrew M10 x 35 |
| 12 | 42246.03 | 1 | Roller bracket |
| 13 | 42243.01 | 2 | End cap |
| 14 | 86 29 213 | 2 | Seal |
| 15 | 91 13 107 | 4 | Bolt M16 x 50 long |
| 16 | 91 43 007 | 4 | Self locking nut |
| 17 | 06 00 105 | 2 | Taper roller bearing |

| Ref | Part No. | Qty. | Description |
|---|-----------|------|-------------------------------------|
| 42241.25 ROLLER ASSEMBLY 54Hp | | | |
| 1 | 42241.10 | 1 | Roller |
| 2 | 42242.04 | 1 | Roller axle |
| 3 | 86 29 181 | 2 | Seal |
| 4 | 06 00 099 | 2 | Bearing |
| 5 | 73 90 011 | 2 | Seal carrier |
| 6 | 86 29 125 | 2 | Seal |
| 7 | 86 00 422 | 2 | O ring |
| 8 | 04 12 120 | 2 | Spring ring |
| 9 | 04 11 262 | 2 | Circlip - internal |
| 10 | 09 01 121 | 2 | Greaser 1/8" BSP straight |
| 11 | 93 00 150 | 1 | Special set screw M12 x 30 - L.Hand |
| 12 | 93 00 149 | 1 | Special set screw M12 x 30 - R.Hand |
| 13 | 42503.02 | 2 | Special washer |
| 14 | 42246.03 | 2 | Roller bracket |
| 15 | 91 13 107 | 4 | Bolt M16 x 50 long |
| 16 | 91 43 007 | 2 | Self locking nut M16 |



ATTENTION



Recommended P.T.O.
speed 500 r.p.m.
Vitesse recommandee
500 T/min a la
prise de force.

DANGER
Rotating cutters under here.
DANGER
Rotor ne pas approcher.

KEEP BOLTS TIGHT
Check bolt tightness after 1 hour,
4 hours, 10 hours and thereafter daily.
**MAINTENEZ LES
BOULONS SERRES**
Et controlez serrage apres 1 heure,
4 heures, 10 heures puis chaque jour.

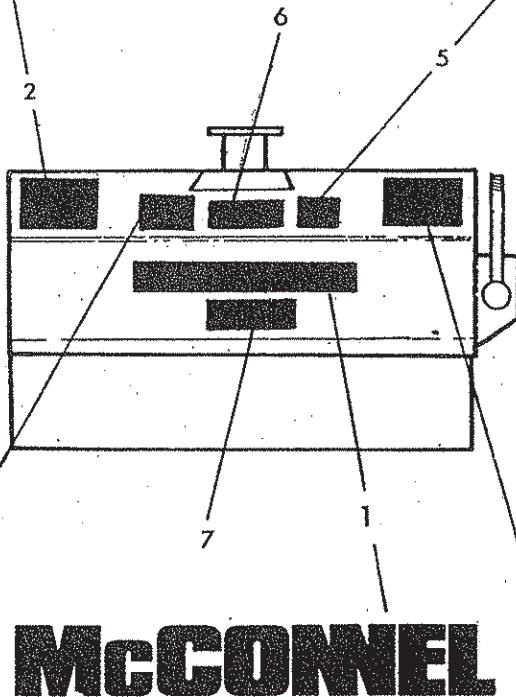


FLAIL PARTS INFORMATION

McCormick Flail Mowers use dynamically balanced and mated system components for Cutter Shafts (Rotors), Knives (Flails), Knife Hangers (Shackles), Bolts, Bushes, Rollers, Drivetrain Components, Bearings Belts and Belt Pulleys. McCormick parts are made and tested to meet close-tolerance specifications of balance, quality and consistency that assure long, trouble-free service. "Will-Fit" parts do not ordinarily meet McCormick Standards and could reduce Mower performance, void warranties, and present an increase in the safety hazard potential.

**BEWARE OF FLYING DEBRIS. KEEP PEOPLE AWAY.
ATTENTION AUX PROJECTIONS. SE TENIR A L'ECART.**

DON'T GAMBLE!
USE GENUINE McCONNELL SERVICE PARTS
See your McCormick dealer



DANGER



KEEP AWAY - ROTATING BLADES

- SERIOUS INJURY OR DEATH CAN RESULT FROM THROWN OBJECTS OR BLADE CONTACT.
- * STOP MOWING IF PERSONS ARE NOT CLEAR OF THROWN OBJECTS
 - * DO NOT STAND ON OR NEAR MACHINE WHEN IN OPERATION.
 - * DO NOT OPERATE WITH DEFLECTORS OR GUARDS REMOVED

GUARDING REQUIREMENTS EQUIPMENTS DE SECURITE

| GROUND CUTTING COUPE DE SOL | HEDGE CUTTING TAILLE DE HAIES | HEDGE CUTTING TAILLE DE HAIES |
|--|--|---|
| | | |
| Always cut upwards. Roller set below flails. Skids recommended. Toujours couper en aspiration. Rouleau regle sous les flails. Patins recommandes. | With flails cutting upwards. Roller set above flails. Les flails travaillent en aspiration. Rouleau regle au dessus des flails. | With flails cutting downwards. Roller set above flails. Les flails travaillent en ortoque. Rouleau regle au dessus des flails. |



McCONNEL

| Ref | PartNo. | Qty. | Description |
|-----------------|-----------|------|-------------------------|
| STICKERS | | | |
| 1 | 12 90 255 | 1 | McConnel |
| 2 | 12 90 377 | 1 | Flail head instructions |
| 3 | 12 90 341 | 1 | Flail head guarding |
| 4 | 0075 6485 | 1 | Rotating blade warning |
| 5 | 12 90 523 | 1 | Use McConnell spares |
| 6 | 12 90 491 | 1 | 65 Hp |
| | 12 90 508 | 1 | 54 Hp |
| 7 | 71 14 481 | 1 | Bolt instructions |



McConnel Limited, Temeside Works, Ludlow, Shropshire SY8 1JL. England.
Telephone: 01584 873131. Facsimile: 01584 876463. www.mcconnel.com