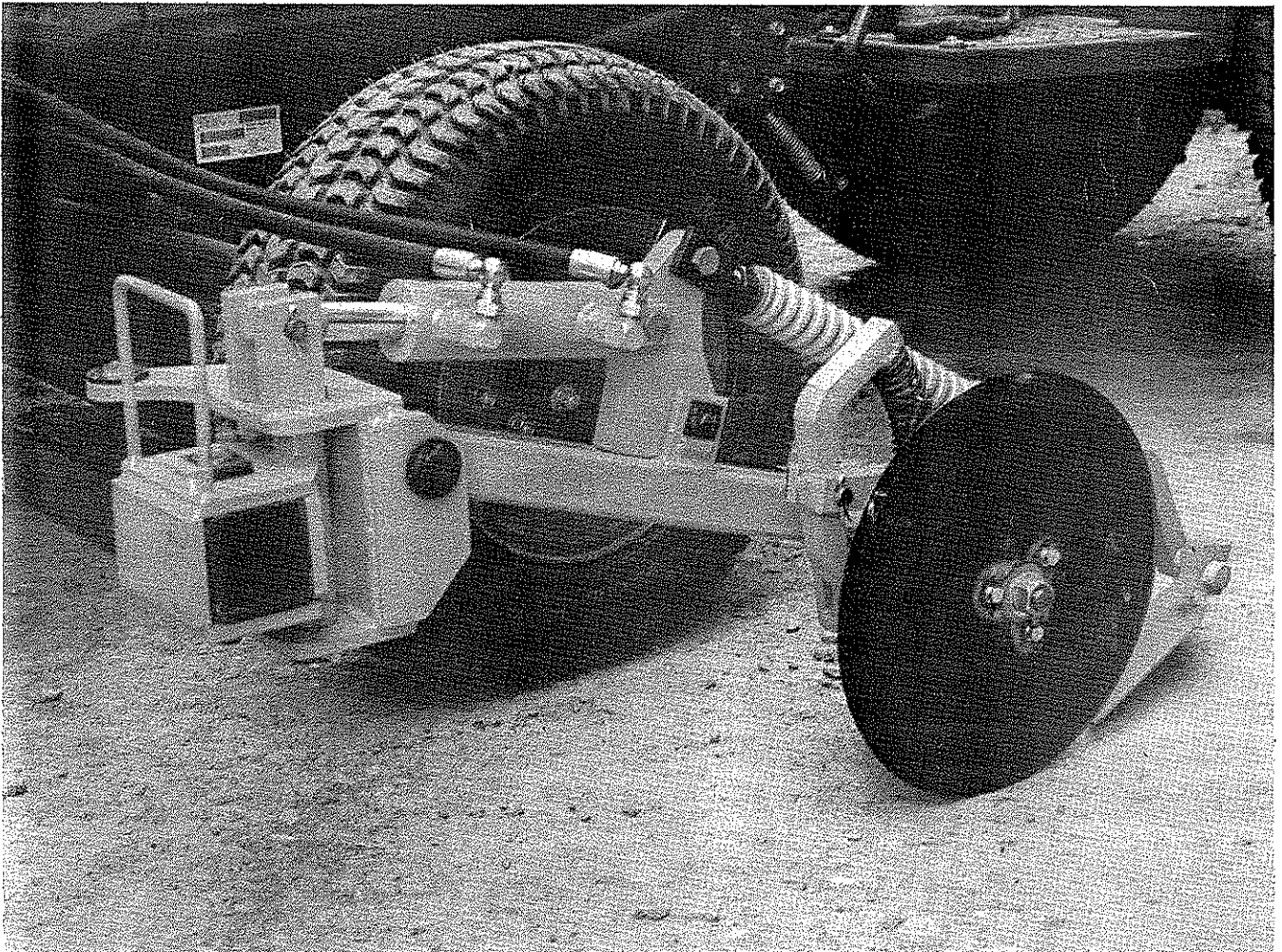


# EZI - EDGER

## Operation & Spares manual



# IMPORTANT

## VERIFICATION OF WARRANTY REGISTRATION

*(Applies to UK Machines only)*



### UK DEALER WARRANTY INFORMATION & REGISTRATION VERIFICATION

It is imperative that the selling dealer registers this machine with McConnel Limited within 7 days of delivery to the end user – failure to do so may affect the validity of the machine warranty.

To register a machine go to the McConnel Limited web site at [www.mcconnel.com](http://www.mcconnel.com), log on to 'DEALER INSIDE' and select the 'Machine Registration button' which can be found in the Service Section of the site. Confirm to the customer that the machine has been registered in the section below.

Should you experience any problems registering a machine in this manner please contact the McConnel Service Department on 01584 875848.

#### Registration Verification (UK Machines)

Dealer Name: .....
Dealer Address: .....
Customer Name: .....
Date of Warranty Registration: ...../...../..... Dealer Signature: .....

#### NOTE TO CUSTOMER / OWNER

*Please ensure that the above section above has been completed and signed by the selling dealer to verify that your machine has been registered with McConnel Limited.*

# EC DECLARATION OF CONFORMITY

*Conforming to EEC Machinery Directive 98/37/EC\**

We,

**McCONNEL LIMITED,**

Temeside Works, Ludlow, Shropshire SY8 1JL.

*Declare under our sole responsibility that:*

The product (type) *Ezi-Edger*.....

.....

Product Code *EZIE*.....

Serial No. & Date ..... Type .....

Manufactured by the above company/\* .....

.....

*(\* insert business name and full address if not stated above)*

Complies with the required provisions of the Machinery Directive 98/37/EC, \* previously Directive 89/392/EEC as amended by Directives 91/368/EEC, 93/44/EEC and 93/68/EEC.

The machinery directive is supported by;

- BS EN ISO 12100:2003 Safety of Machinery. This standard is made up of two parts; Part 1 Terminology, methodology, Part 2 Technical Specifications.
- BS EN 1050 Safety of machinery - Principles of risk assessment.
- and other national standards associated with its design and construction as listed in the Technical File.

The Machinery Directive is fully implemented into UK law by means of the Supply of Machinery (Safety) Regulations 1992 (SI 1992/3073) as amended by The Supply of Machinery (Safety) (Amendment) Regulations 1994 (SI 1994/2063).

Signed *John Frank*.....

*on behalf of McCONNEL LIMITED*

*Responsible Person*

*Status:* Chief Design Engineer

*Date:* Dec. 1994



# GENERAL INFORMATION

Read this manual before fitting or operating the machine. If in doubt contact your dealer or the McConnell Service Department for assistance.

Use only McConnell spare parts on McConnell equipment and machines. Refer to the parts section before ordering spares.

## DEFINITION

The following definitions apply throughout this manual:

### WARNING

An operating procedure, technique etc., which can result in personal injury or loss of life if not observed carefully.

### CAUTION

An operating procedure, technique etc., which can result in the damage of either machine or equipment if not observed carefully.

**NOTE** An operating procedure, technique etc., which is considered essential to emphasise.

## LEFT AND RIGHT-HAND

This term is applicable to the machine when fitted to the tractor and viewed from the rear. This also applies to tractor references.

Record the serial number of your machine on this page and always quote this number when ordering spares. Whenever information concerning the machine is requested remember to also state the type of tractor to which it is fitted.

MACHINE SERIAL NUMBER	INSTALLATION DATE

MODEL DETAILS
DEALERS NAME
DEALERS TELEPHONE NUMBER

# **READ THE BOOK FIRST**

**It might save hours and pounds later**

**When ordering spare parts always  
quote the machine type and serial  
number as well as the part number**

**Factory re-built service exchange  
units of the major hydraulic components  
are available from your dealer**

## **FITTING**

### **Tractor Selection.**

The tractor must be equipped with a front weight carrying bar and a double acting auxiliary oil supply.

### **Attachment to tractor**

Hook the mounting bracket over the weight carrier bar and secure using clamp nuts and bolts.

Assemble the carrier bar. There are three positions for height adjustment. Select the position which gives approximately 15 ins (375mm) ground clearance beneath the bar. Do not tighten the nuts fully at this stage.

Remove the mounting and transport pins from the Ezi Edger.

Slide the Ezi Edger onto the mounting bar. It may be necessary to connect up the hydraulics at this point (see later) to adjust the ram and facilitate fitting. Secure in position with the mounting pin through the end hole in the mounting bar.

Turn tractors wheel to full lock.

Insert the transport pin.

Slide the mounting bar horizontally to give a minimum clearance of 1" (25mm) between the tyre and the Ezi edger beam.

Tighten mounting bar clamps.

Connect up the hydraulics to the double acting auxiliary service. It will be necessary to add extension hoses and self seal couplings. Route the hoses carefully ensuring that they are not stretched, chafed or kinked during any operation of the tractor or Ezi Edger.

## **OPERATION**

Remove transport pin and the disc locking pin, this allows the disc to automatically follow the kerb compensating for steering variations.

Align disc with kerb edge and using the controls lower the disc until the depth shroud engages the kerb.

The main spring will allow the disc to lift if an obstacle is engaged. The spring pressure is factory set and should not be adjusted.

Adjust your forward speed to allow the disc time to cut. Too fast and the disc will bounce leaving uncut areas.

The spring loaded scraper should be adjusted such that it skims the kerb clearing the cut vegetation.

When operating on paths without a kerb to guide the disc the transport and disc locking pins are re-engaged. The line of cut is dictated by the tractor steering.

## **TRANSPORT**

Raise the disc to its full height

Engage the transport pin.

## **STORAGE**

Coat exposed areas of the ram rod with grease.

Secure hose ends clear of the ground and cover ends with dust caps.

## **REMOVAL FROM TRACTOR**

Ensure disc is in the raised position.

Disconnect hoses.

Slacken the mounting bar clamps.

Withdraw mounting bar together with Ezi Edger.

The mounting bracket may be left permanently on the tractor.



# **SPARE PARTS MANUAL**

## **FOR BEST PERFORMANCE....**

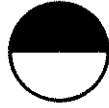
### **USE ONLY McCONNEL SPARE PARTS**

To be assured of the latest design improvements purchase your genuine replacements from the original equipment manufacturer **McConnel Ltd.** through your local dealer or stockist.

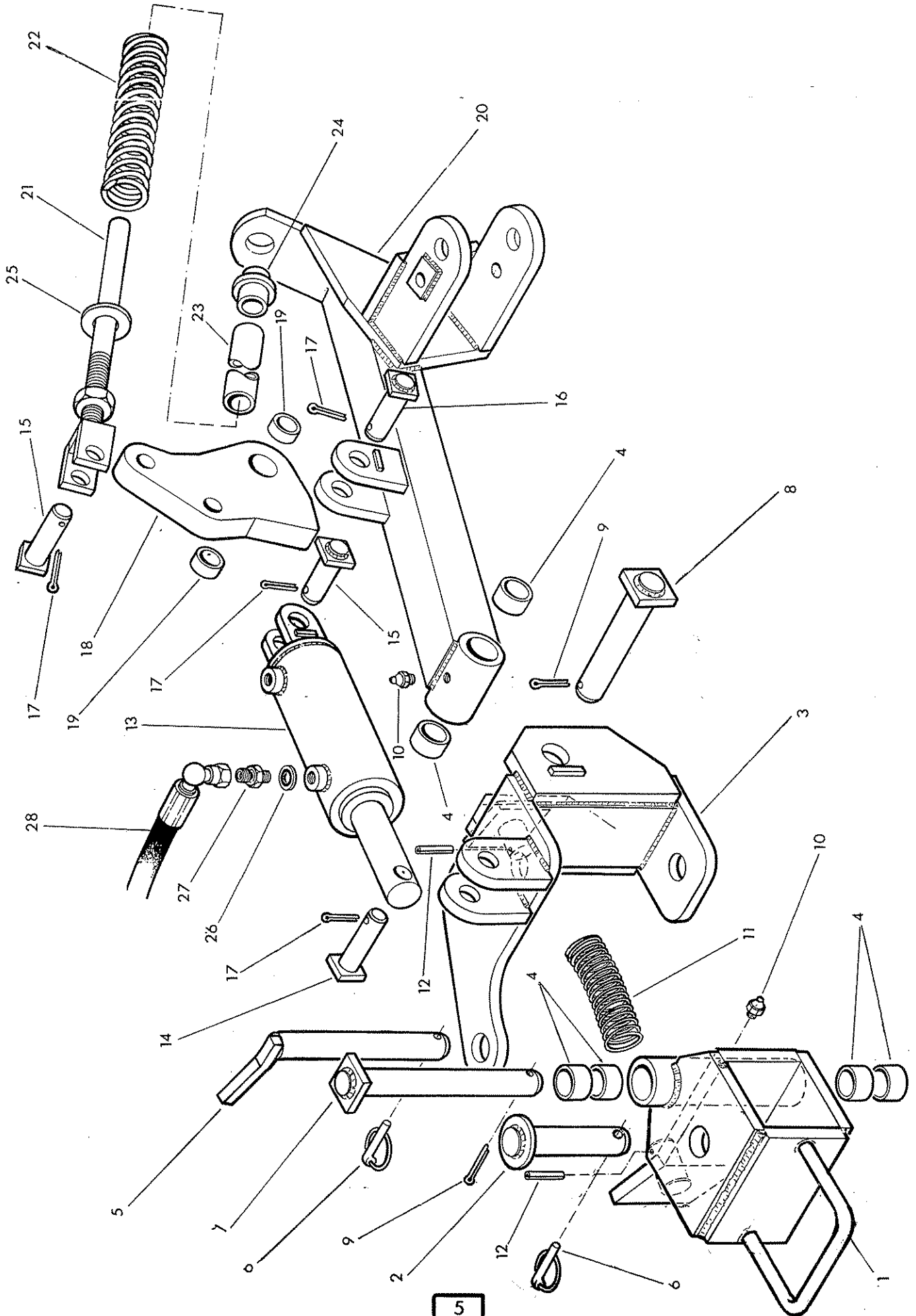
Always quote machine type and serial number as well as the part number.

Design improvement may have altered some of the parts listed in this manual - The latest part will always be supplied when it is interchangeable with an earlier one.

BODY



McCONNELL



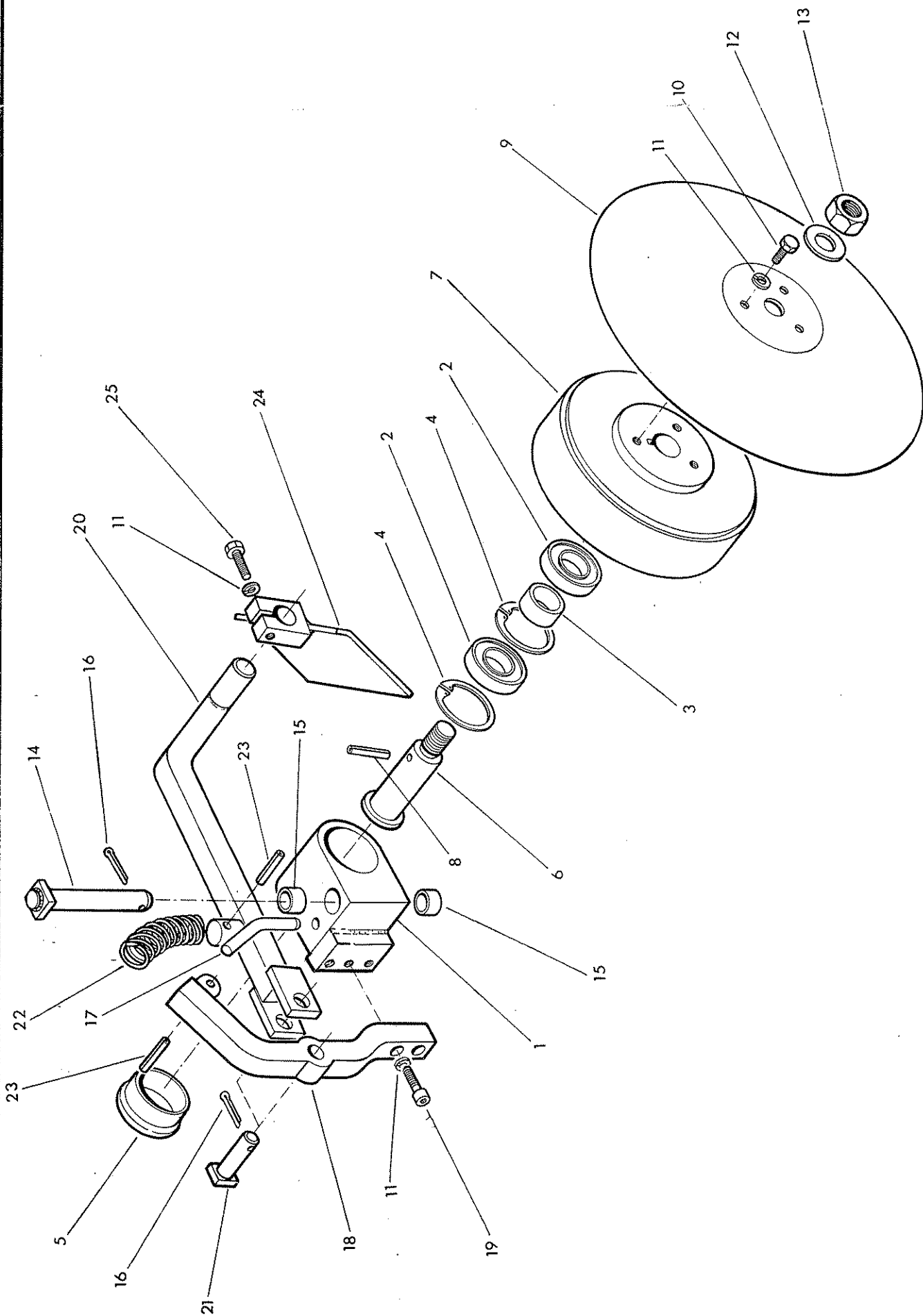


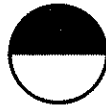
Ref	Part No.	Qty	Description
<b>EZI EDGER BODY</b>			
1	12 70 274	1	Swivel mounting bracket
2	12 70 303	1	Mounting pin
3	12 70 272	1	Pivot block L.hand
	12 70 271	1	Pivot block R.hand not illus.
4	12 70 091	6	Bush
5	12 70 081	1	Locking pin
6	04 31 217	2	Linch pin
7	12 70 314	1	Pivot pin
8	12 70 035	1	Pin - Beam pivot
9	95 01 406	2	Split pin
10	09 01 121	2	Greaser - straight
11	12 70 062	1	Spring
12	04 25 525	2	Spring dowel
13	12 70 277	1	Ram assembly
14	12 70 068	1	Pin - Ram rod
15	12 70 057	2	Pin - Ram rod/Spring clevis
16	12 70 065	1	Pin - pressure tongue
17	95 01 326	4	Split pin
18	12 70 309	1	Pressure tongue
19	60 01 216	2	Bush
20	12 70 336	1	Main beam L.hand
	12 70 335	1	Main beam R.hand not illus.
21	12 70 310	1	Push rod c/w nut
22	12 70 061	1	Spring
23	12 70 059	1	Compression stop tube
24	12 70 060	1	Spring location
25	91 00 108	1	Plain washer
26	86 50 103	2	Bonded seal
27	60 00 113	2	Union
28	85 31 323	2	Hose 3/8 BSP x 80" long SF-90F

HUB

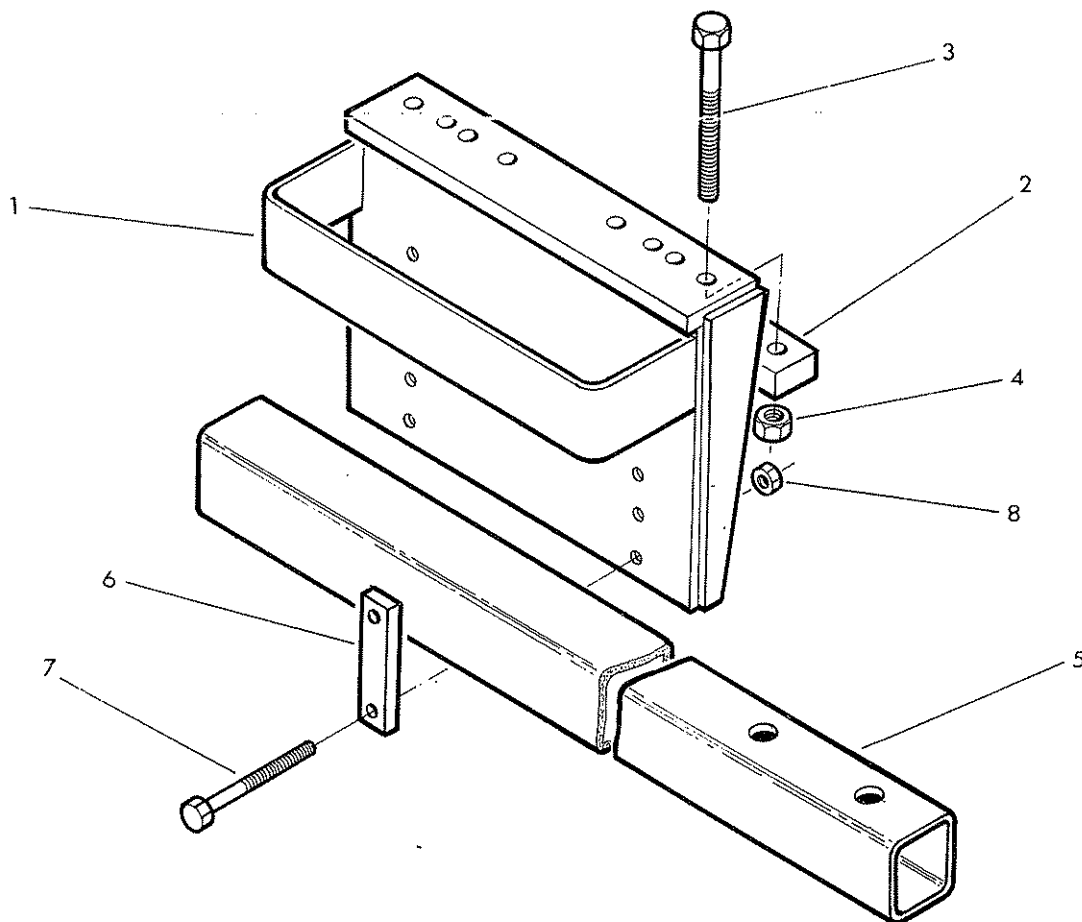


McCOMEL





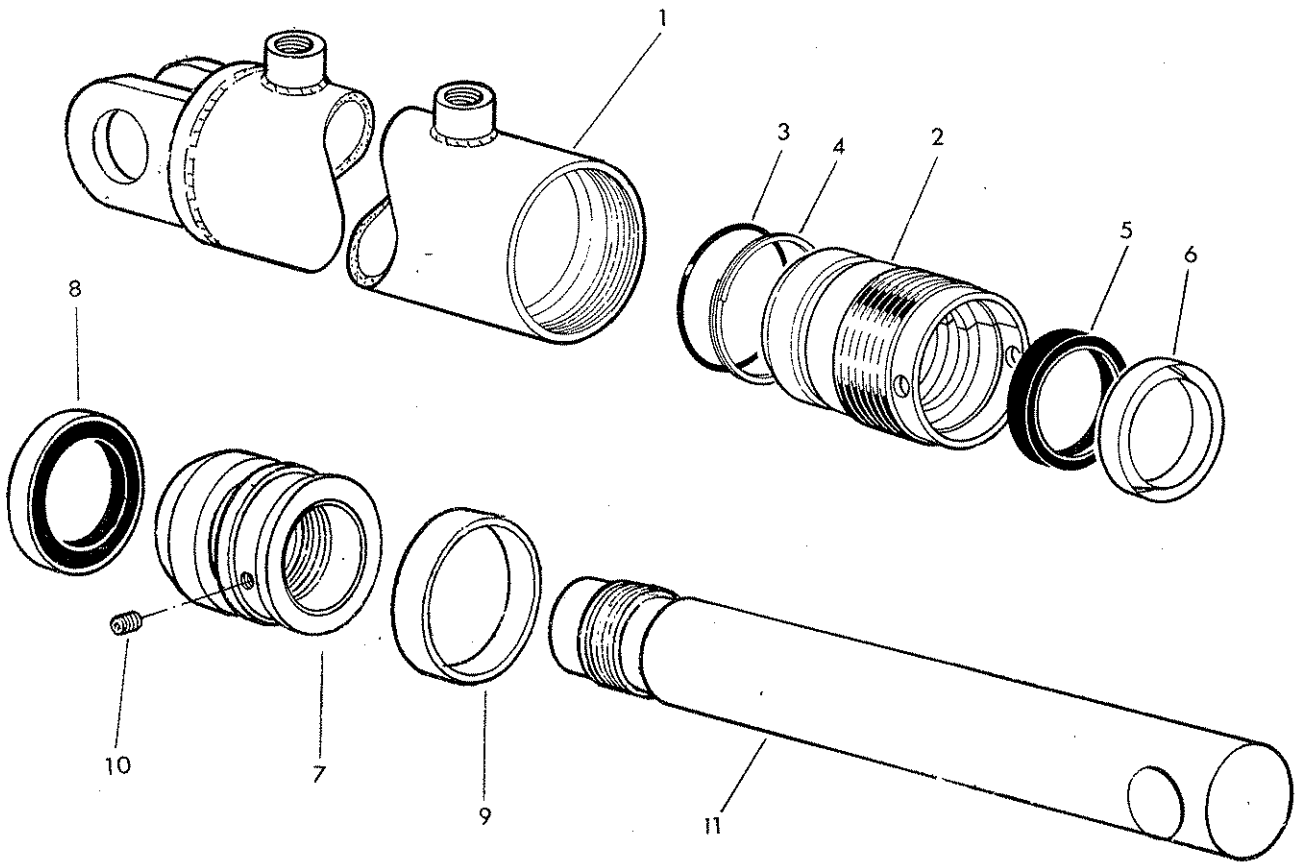
Ref	Part No.	Qty	Description
<b>HUB ASSEMBLY</b>			
1	12 70 334	1	Bearing housing
2	06 00 100	2	Bearing
3	12 70 094	1	Bearing spacer
4	04 11 262	2	Internal circlip
5	0075 6492	1	Dust cover
6	12 70 098	1	Stub axle
7	12 70 328	1	Depth shroud
8	04 21 810	1	Spring dowel
9	12 70 099	1	Cutting disc
10	93 13 054	3	Set screw
11	91 00 204	6	Spring washer
12	91 00 108	1	Plain washer
13	01 51 007	1	Self locking nut
14	12 70 086	1	Hub pivot pin
15	12 70 088	2	Bush
16	95 01 326	2	Split pin
17	12 70 103	1	Pin - Hub locking
18	12 70 326	1	Support bracket
19	93 43 054	2	Capscrew
20	12 70 327	1	Scraper arm L.hand
	12 70 321	1	Scraper arm R.hand not illus.
21	12 70 057	1	Pin
22	12 70 062	1	Spring
23	04 25 525	2	Spring dowel
24	12 70 332	1	Scraper L.hand
	12 70 324	1	Scraper R.hand not illus.
25	93 13 084	1	Setscrew



Ref Part No. Qty Description

**CARRIER ASSEMBLY**

1	12 70 337	1	Mounting bracket
2	12 70 252	1	Clamp
3	02 11 566	2	Bolt
4	01 41 006	2	Self locking nut
5	12 70 107	1	Carrier bar
6	12 70 089	2	Clamp
7	05 253 25	4	Bolt
8	01 41 005	4	Self locking nut



Ref	Part No.	Qty	Description
	12 70 277		<b>RAM ASSEMBLY</b>
1	12 70 316	1	Ram Barrel
2	12 70 078	1	Gland housing
3	86 00 302	1	O ring
4	86 09 302	1	Anti extrusion ring
5	86 29 201	1	Gland seal
6	86 29 149	1	Wiper seal
7	12 70 077	1	Piston
8	86 29 187	1	Piston seal
9	86 29 188	1	Bearing ring
10	93 00 110	1	Grubscrew
11	12 70 315	1	Piston rod
	86 99 244		<b>SEAL KIT</b>



McConnel Limited, Temeside Works, Ludlow, Shropshire SY8 1JL. England.  
Telephone: 01584 873131. Facsimile: 01584 876463. [www.mcconnel.com](http://www.mcconnel.com)